



SL730+

PERFORMANCE
in LIGHTING

powered by
GEWISS

SL730+

A light that lasts –
sustainable, future-proof, flexible



● ● ● Designed
● ● ● Developed
● ● ● Assembled in Germany

The SL730+ luminaire family is developed and produced in Goslar, Germany. We rely on a high level of vertical integration and quality, which is based on years of know-how.



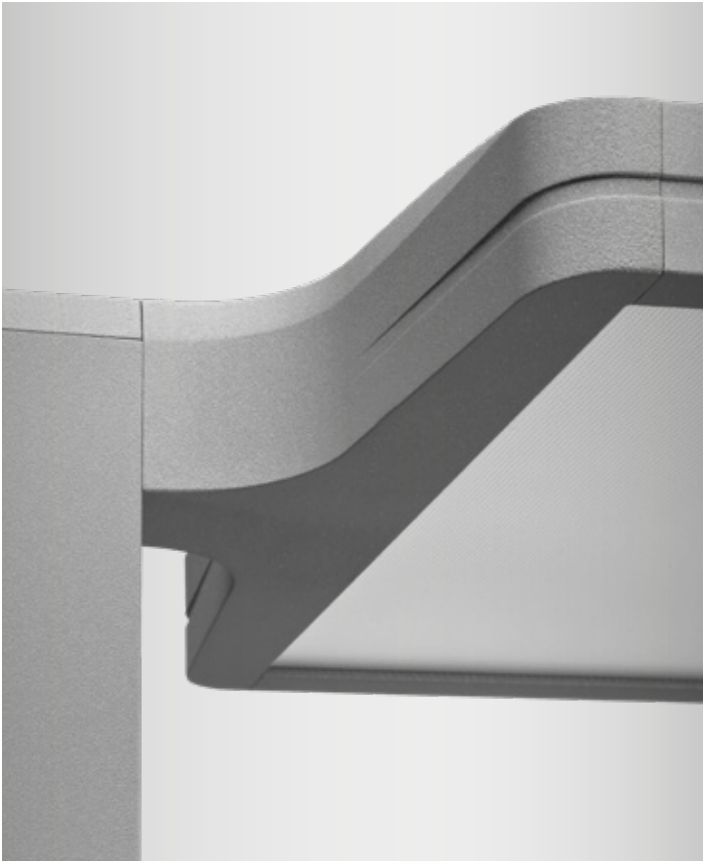
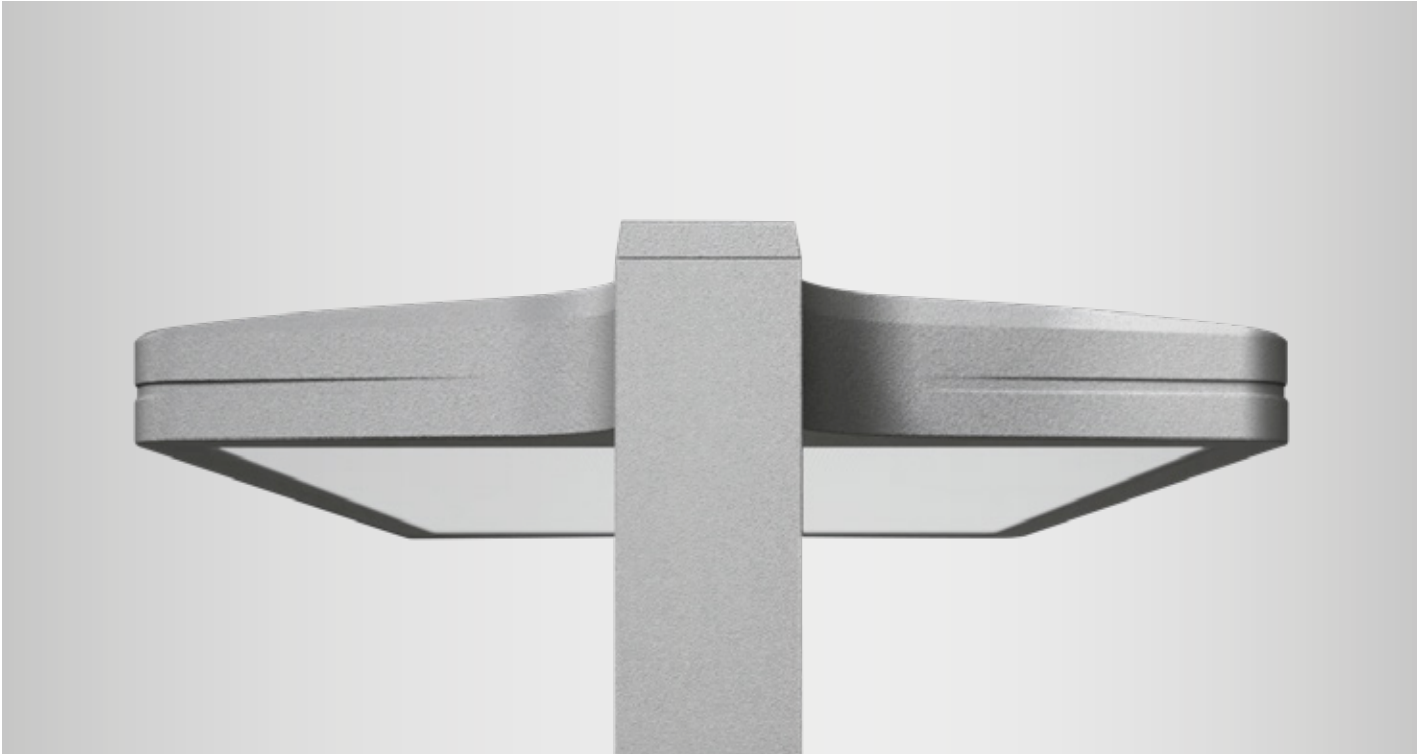
The right lighting in the office is crucial for productivity and well-being. In addition to optimum light distribution, modern communication systems, individual room design and energy requirements are also important. The design of the luminaires must also blend harmoniously into the architecture.

With the new SL730+ LED luminaire range, PERFORMANCE iN LIGHTING offers an intelligent and stylish solution for office lighting that meets current trends and future requirements.

Our free-standing luminaire series has a system character, is functional and can be individually adjusted to the respective lighting requirements. Equipped with innovative Futur-Proof technology and a retrofittable light engine, the series is a future-proof solution for modern working environments. With its efficient luminaire heads in L and XL or as a clever clamp version, the future-proof free-standing luminaire not only illuminates the classic single or multiple workstation, but also the entire working area in an office without glare and in compliance with standards.

Smart functions such as HCL and Bluetooth control as well as practical features such as the integrated USB port round off the range perfectly. Individual special solutions are also possible on request.

Design





Clear design language

The timeless, modern design of the series SL730+ series impresses with its elegant silhouette and a luminaire head with an all-round shadow gap, which visually reduces the height of the luminaire and conveys a harmonious lightness.

Design that connects

With filigree precision, the standpipe fits almost seamlessly into the luminaire head, as if two elements become one - harmonious, elegant and characterized by timeless beauty.

Maximum effect

The elegant housing design with soft, curved corners combines style and a modern look. The high-quality, impact-resistant powder coating offers additional protection and harmoniously rounds off the overall look.

Quality in every detail

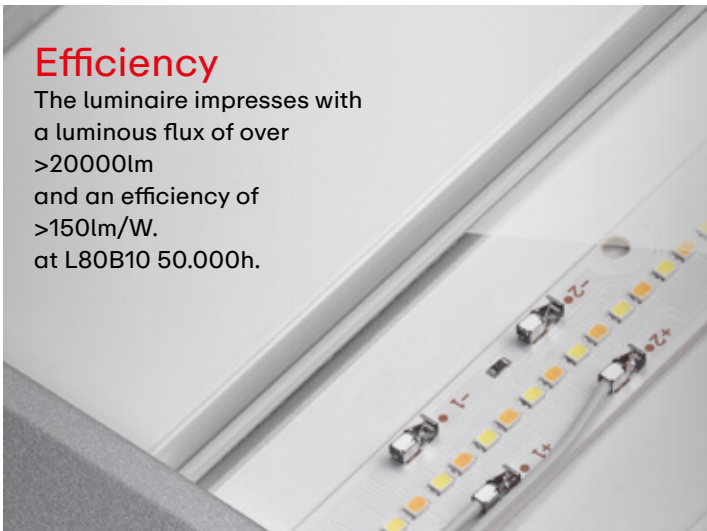
Multifunctional

The double USB charging socket ensures convenient charging. Direct and indirect light can be controlled separately.



Efficiency

The luminaire impresses with a luminous flux of over >20000lm and an efficiency of >150lm/W. at L80B10 50.000h.



Sustainable lighting control

The daylight and motion sensor with adjustable cut-off ensures targeted light activation and prevents the luminaire from being switched on unnecessarily.



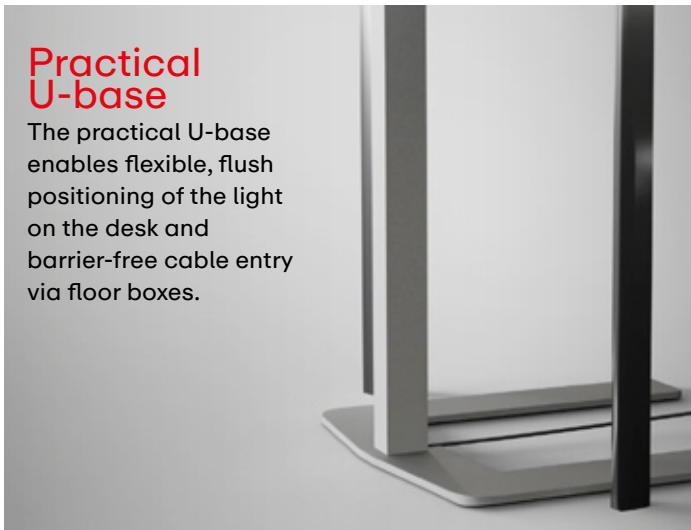
Configurable

For even more flexibility the luminaire can be configured via the **LIGHT-PERFORMER®** can be configured, e.g. as a practical clamp version for height-adjustable desks.



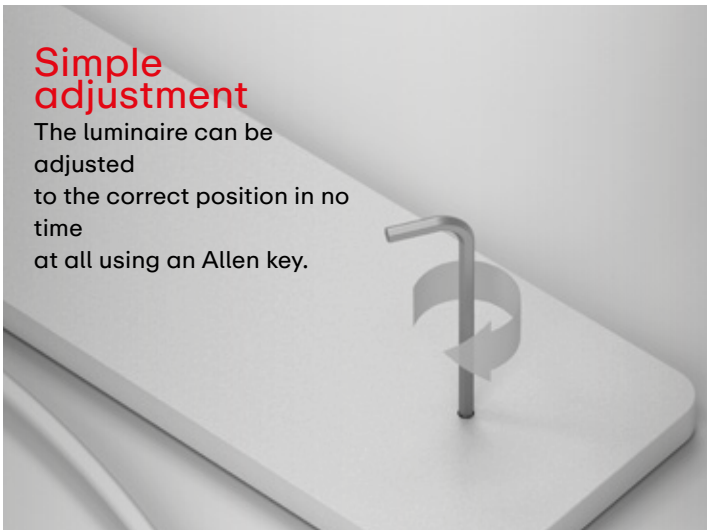
Practical U-base

The practical U-base enables flexible, flush positioning of the light on the desk and barrier-free cable entry via floor boxes.



Simple adjustment

The luminaire can be adjusted to the correct position in no time at all using an Allen key.



Modern design language, maximum functionality

+ Design

The SL730+ series inspires in equal measure with its design and functionality. Countless versions make it a highlight in any architectural environment.



+ Future-Proof

The replaceable light engine enables simple, cost-effective maintenance and make the free-standing luminaires in the SL730+ series a future-proof lighting solution.



+ EN 12464-1

Innovative microprism and our tried and tested Sidelight technology ensure outstanding visual comfort and glare-free light. Suitable for VDU workstations in accordance to EN12464-1.



+ Smart Versions

Smart versions with Human Centric Lighting, swarm function, Bluetooth control or intelligent sensor technology increase comfort, promote well-being and reduce costs.



+ Easy assembly

The maintenance-friendly design enables convenient handling and quick, intuitive “one-person” installation.

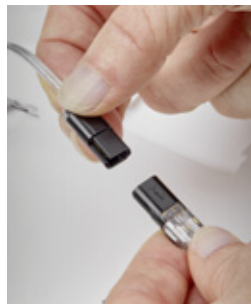


Future-Proof

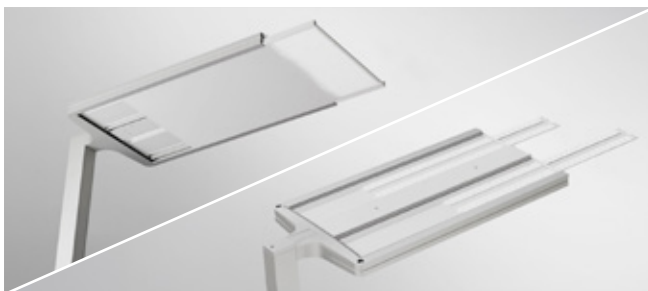


The timelessly elegant SL730+ free-standing luminaire series sets new standards for sustainable lighting solutions with its advanced, replaceable Light Engine technology and offers you and your customers security for the future. Replacing the light engine is as effortless as with a conventional fluorescent lamp, which not only saves you time, but also enables you to manage your lighting system responsibly. With one-off planning costs, you can enjoy consistently high luminous intensity, secure your future and at the same time comply with the EU Eco-Design Directive VO EU 2019/2020. **True to our motto “A light that lasts”.**

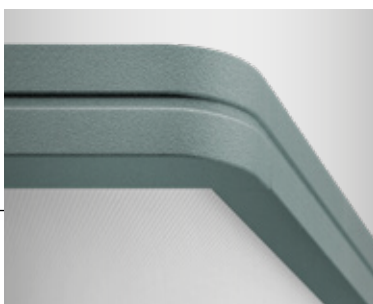
But that’s not all: our guarantee for future replacement options gives you long-term flexibility and maximum security. This means you can always adapt your lighting to new requirements without having to replace the entire installation. With office luminaires from PERFORMANCE IN LIGHTING, the “+” in the series stands for the ease with which the light engine can be replaced - a clear advantage for your future viability and cost control.



The light engine can be replaced effortlessly in just a few steps. The electrical connection is easily disconnected using the practical plug-and-play connector.



The direct and indirect light engine can be replaced separately. This allows you to replace only the required components and extend the service life of your lighting solutions at the same time.



The housing, made of robust die-cast aluminum and sheet steel, is finished with a high-quality, impact-resistant and scratch-resistant powder coating. Choose from over 2700 RAL colors and customize the housing with a glossy or textured surface.



Advantages at a glance



- ⊕ Future-proof thanks to simple revisions (replacement of the light-engine and converter)
- ⊕ Developed, designed and produced in Germany - with a focus on quality, short delivery routes and low environmental impact
- ⊕ Configurable free-standing luminaire series- Customizable in color, power, control for single and multiple multiple workstations or as a clamp version
- ⊕ Maintenance-friendly design (complies with the EU Eco-Design Directive 2019/2020)
- ⊕ Smart versions with Human Centric Lighting, swarm function, Bluetooth control or intelligent sensors
- ⊕ Integrated USB ports enable simultaneous charging of several mobile devices
- ⊕ Complete glare control according to DIN EN 12464-1 – ideal for single and multiple workstations
- ⊕ Maximum values for efficiency and service life for the allocation of subsidies and building certification (e.g. BEG subsidy, LEED, BREEAM)
- ⊕ High-quality wide-area light over the entire light-emitting surface
- ⊕ Simple room planning thanks to the high flexibility of floor lamps
- ⊕ Simple, convenient and practical installation
- ⊕ Available in all RAL colors
- ⊕ 5-year warranty

LIGHT-PERFORMER®

The perfect tool for customized lighting projects



Design your lighting projects in no time at all with our innovative configuration tool. You can configure even complex lighting systems in just a few minutes. The intuitive operation makes project planning child's play, while all the important data is available to you centrally in one place. You can also choose from our entire product range to make your projects even more flexible. With just one click, you can create precise parts lists, data sheets, lighting and CAD files and get started with your planning straight away.

Save an infinite number of projects and adapt them flexibly at any time. Thanks to its multilingual capability, the tool can be used worldwide and was awarded the 3iF Design Award for innovation and user-friendliness in 2018.

- ⊕ Web-based configuration tool for customized project solutions
- ⊕ Quick and easy configuration of complex lighting systems in minutes
- ⊕ Intuitive handling makes project planning child's play
- ⊕ Centralized data provision: All relevant information in one place promotes efficient project planning and quick decisions
- ⊕ Parts lists, project and system data sheets, assembly aids, lighting and CAD files, prices and tender texts at the touch of a button, download or print
- ⊕ Download lighting data for configurations and standard products at the touch of a button and start directly with the lighting planning (ULD, ROLF and Revit files)
- ⊕ Save unlimited projects and customize them at any time
- ⊕ Live chat: direct support for quick solutions
- ⊕ Globally usable thanks to multilingual support
- ⊕ Clever feature: Amortization calculator and service life and lighting calculator for optimum cost-effectiveness of your project
- ⊕ Awarded for innovation and user-friendliness (3iF Design Award 2018)



Discover all the features and benefits of our product, how it works and what makes it unique.

Scan here and get inspired!





PERFORMANCE iN LIGHTING powered by GEWISS

Italian design expertise meets technical innovation and quality made in Germany. Whether individual spotlights or holistic lighting concepts - when it comes to light, we have the solution.

With over 30 years of experience, we are your partner for professional lighting applications in the commercial project business.

We inspire our customers with sophisticated indoor and outdoor luminaires, powerful spotlights and floodlights, effective façade lighting, innovative pole and bollard luminaires and effective, standard-compliant office lighting.

As a specialist in office lighting, PERFORMANCE iN LIGHTING develops office luminaires with sustainable design and future-proof technologies.

We combine a high level of planning expertise with maximum flexibility in production and are therefore one hundred percent “project-oriented”.

Quality Made in Germany - Style Made in Italy!

PERFORMANCE iN LIGHTING
Italia

Telefono: +39 045 61 59 211

Email: info.it@pil.lighting

PERFORMANCE IN LIGHTING S.p.A.

Viale del Lavoro 9/11

37030 Colognola ai Colli (VR) - Italy

T +39 045 61 59 211

info.it@pil.lighting

www.performanceinlighting.com

PERFORMANCE
 LIGHTING

powered by

GEWISS