



LAMA+

LAMA+

Many challenges, one solution





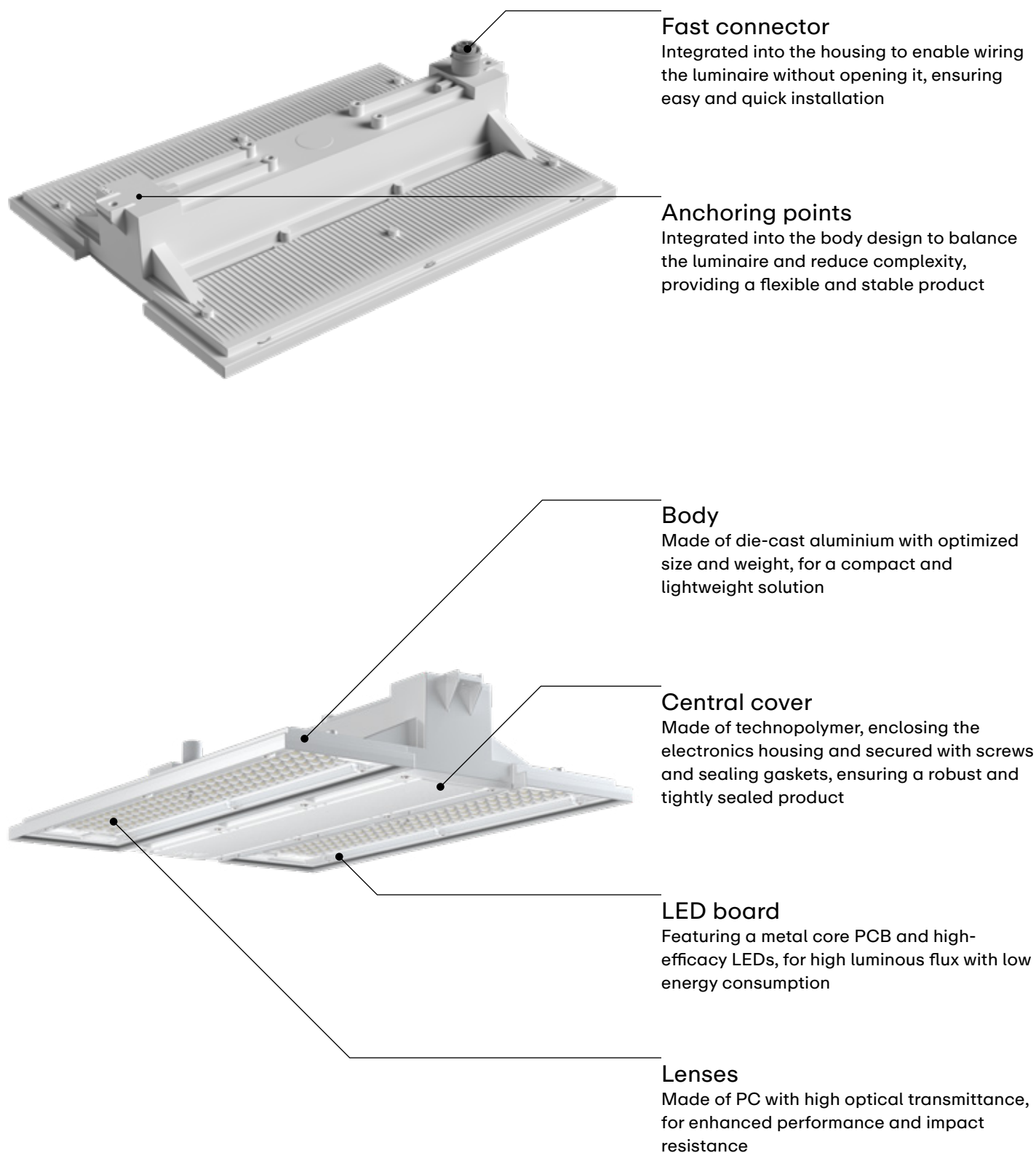
LAMA+ is a range of high-bay luminaires designed to respond quickly and effectively to various professional industrial lighting challenges with a single product.

Its optimized design and refined LED platform ensure efficiency, reliability and consistent performance, while the compact and lightweight housing facilitates installation even in complex environments. Additionally, its robust construction ensures long-lasting resistance, even under harsh operating conditions.

Thanks to its proven reliability and ability to adapt to different application requirements, LAMA+ offers an optimal balance of quality, performance, and value. A tested and versatile solution that delivers exceptional durability and energy efficiency while ensuring a rapid return on investment.

Overview

LAMA+ is designed around an optimized platform that enhances luminous efficiency while reducing overall dimensions and weight. Every component has been refined to ensure maximum durability, ease of installation and energy efficiency.





LAMA+ 70

LAMA+ 100

LAMA+ 150

LAMA+ 200

4000 K / CRI 80
5700 K / CRI 80

12,500 lm
65 W
192 lm/W

On/Off - DALI -
Emergency

-40°C +65°C

4000 K / CRI 80
5700 K / CRI 80

18,721 lm
100 W
187 lm/W

On/Off - DALI -
Emergency

-40°C +60°C

4000 K / CRI 80
5700 K / CRI 80

26,291 lm
142 W
185 lm/W

On/Off - DALI -
Emergency

-40°C +60°C

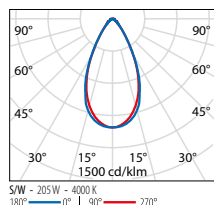
4000 K / CRI 80
5700 K / CRI 80

33,315 lm
187 W
178 lm/W

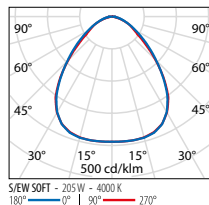
On/Off - DALI -
Emergency

-40°C +55°C

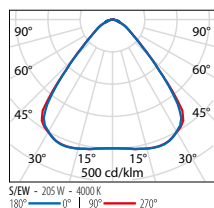
Optics



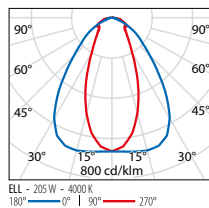
S/W - Symmetric wide



S/EW SOFT - Symmetric
Extra-Wide soft

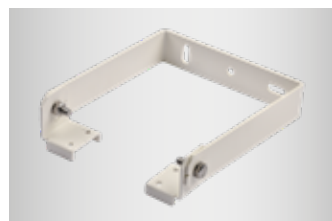


S/EW - Symmetric Extra-Wide



ELL - Elliptical

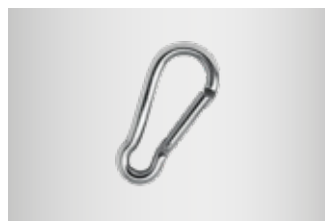
Accessories



Surface-mounting bracket kit



Protective glass IK10

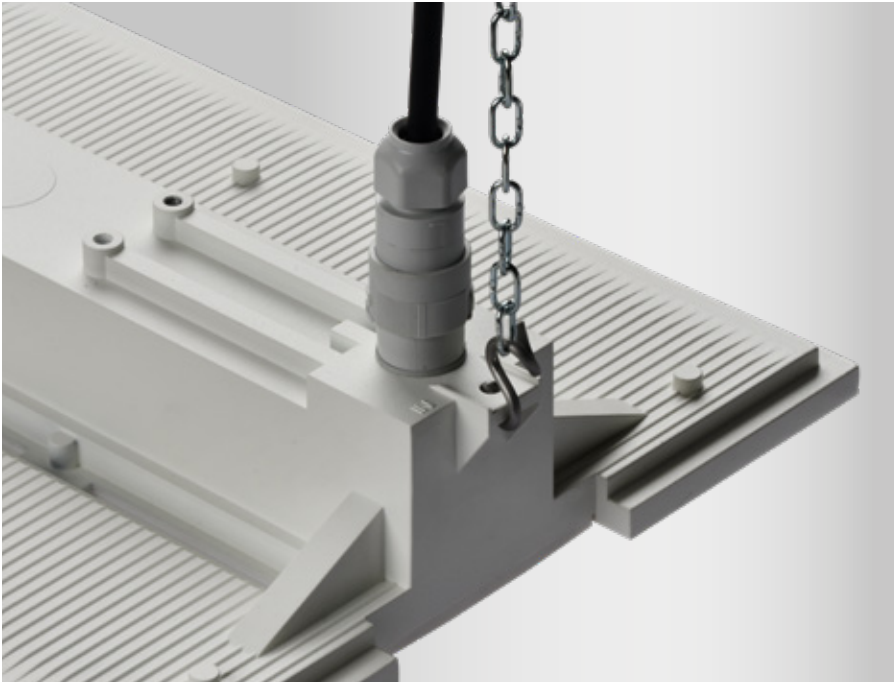


Suspension kit for ball-proof
applications





Key features and benefits



Optimization

Building on a strong heritage, LAMA+ exceeds expectations. Redesigned to align with the latest technical trends, it is more convenient than ever, offering unmatched performance and maneuverability while preserving the core strengths that have established LAMA+ as one of the most reputable high bay solutions on the market.



Fine-tuning

LAMA+ has undergone a rigorous optimization process, resulting in a more compact and lightweight design



Enhanced performance

The improved LED platform ensures upgraded performance



Sturdy & proven

The product's long-standing strengths are a hallmark of outstanding reliability and efficiency



Versatility

The adaptability of LAMA+ to the requests of professional industrial applications is the essence of its mission.

It is a singular solution in every sense, offering multiple usage possibilities with a single body size.

Practical and dependable, it is the convenient choice for exigent contexts.



Swiss army knife

LAMA+ is designed to meet key application needs in professional industrial environments with a single, versatile solution



Comprehensive range

The range covers all key configurations demanded by the market



Easy installation

Its compact, lightweight body, with integrated anchoring points and fast connectors, ensures quick and straightforward installation

Key features and benefits



Competitiveness

LAMA+ offers unparalleled convenience. For projects that demand quick product availability and a strong return on investment, it provides the reliability needed to achieve ambitious goals. Building on a legacy of excellence, LAMA+ enhances a highly competent, acclaimed, and award-winning high bay range.



Sweet spot

LAMA+ hits the ideal balance of quality, performance, and value, delivering a rapid return on investment



Readily availability

Quick product availability enables partners and customers to rely on us for a prompt response



Strong market reputation

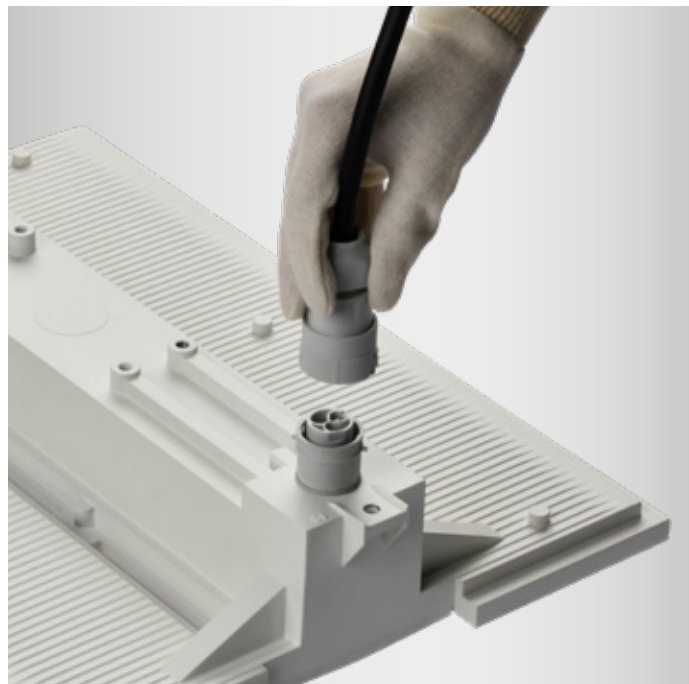
The new version of LAMA+ builds on the series' established popularity and recognition in the market

Easy Electrical Connection

LAMA+ features a quick waterproof connector that allows for effortless connection to the mains without needing to open the device.

This practical design drastically reduces installation time, significantly saving installation costs.

Additionally, it ensures the safety and reliability of a factory-sealed product, keeping the fixture intact and eliminating the risk of accidental damage during the connection process.



Ball-Proof Certified

The range is designed to meet the rigorous requirements of DIN 18032-3, the standard regulating luminaires for sports facility applications.

LAMA+ has been certified by an independent third-party entity, confirming its compliance with the standard and suitability for such environments. This ensures high impact resistance and enhances user safety by preventing the risk of damage from falling parts.

The luminaire must be equipped with a dedicated accessory (ordered separately) to comply with ball-proof installation requirements.



The perfect solution for every requirement





Discover all the features and benefits of our product, how it works and what makes it unique.

Scan here and get inspired!



Emotional
video



Technical
video





PERFORMANCE iN LIGHTING powered by GEWISS

Thanks to over 40 years of presence in global markets and a series of successful events that have developed its identity and enriched its know-how, PERFORMANCE iN LIGHTING can today enjoy a wealth of lighting technology expertise and experiences that make it a key player in global markets.

2023 marks an important milestone in the journey, with PERFORMANCE iN LIGHTING becoming part of the GEWISS Group, a reference in the international market for home & building automation solutions and services, energy protection and distribution, electric mobility, and intelligent lighting.

This new project allows for further expansion of mutual expertise, confirming the growth path undertaken by PERFORMANCE iN LIGHTING in 2017 with the consolidation of all products, PRISMA, SBP, and SPITTLER, under a single brand, which today becomes PERFORMANCE iN LIGHTING | powered by GEWISS.

This choice confirms the willingness to always face new challenges, offering innovative, technological, and reliable solutions to increasingly meet customer needs.

PERFORMANCE iN LIGHTING products have always combined aesthetics and design with performance, characterizing the history of lighting technology. Its journey confirms, with even greater vigor, the continuous enthusiasm for innovation that has allowed the company to become a solid global reference in the world of design and architecture.

PERFORMANCE IN LIGHTING S.p.A.

Viale del Lavoro 9/11

37030 Colognola ai Colli (VR) - Italy

T +39 045 61 59 211

info.it@pil.lighting

www.performanceinlighting.com

PERFORMANCE
 LIGHTING

powered by

