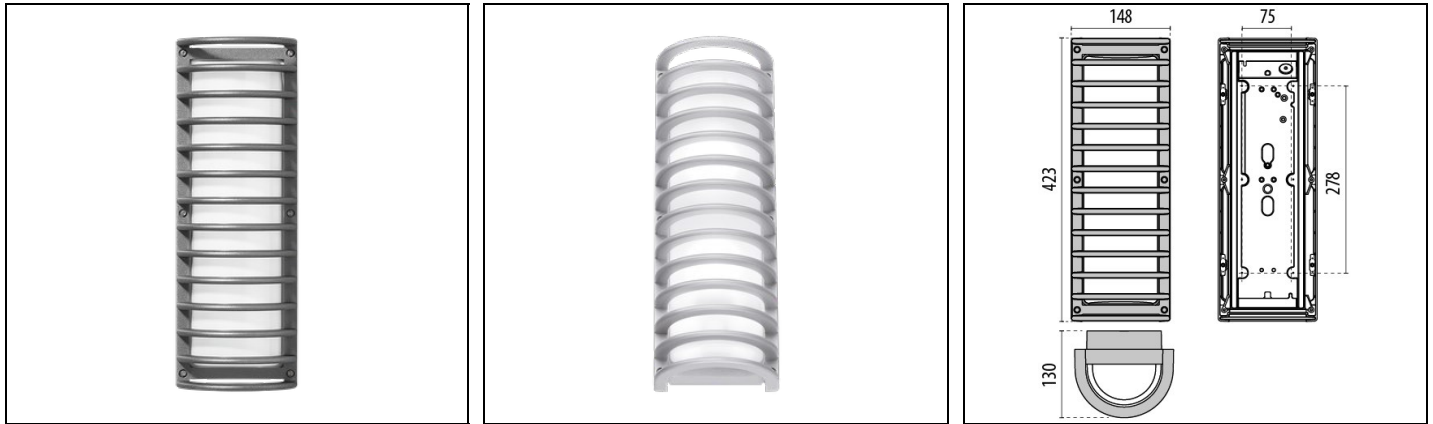


NIKKO+45/G

Part number 002097



Description

Wall, ceiling, bracket and post mounted luminaire for indoor and outdoor, comprising:

- Aluminium housing and guard (/G), polyester powder coat finish ISO 9227/12944 - ISO 9223 (C5)
- Pressed glass diffuser, internally coated, secured with the ring
- Aluminium reflector and gear tray
- Technopolymer silicone sealing gasket
- Stainless steel locking hardware
- Design by ROBERTO FIORATO
- Design by ROBERTO FIORATO

To maintain the regular updating of our products, PERFORMANCE IN LIGHTING reserves the right to make changes without prior notice. For the most up to date information we always recommend you read the latest version published on the website www.performanceinlighting.com. Delivered luminaire lumen outputs and power consumptions, including losses, are subject to a tolerance of +/- 7%, and unless otherwise stated the values apply to an ambient temperature of 25°C. Terms of warranty are available at <https://www.performanceinlighting.com/qr/company/led-warranty>

Product data

ETIM Group:	EG000027	ETIM Class:	EC002892
-------------	----------	-------------	----------

General information

Lampholder:	E27	Light source:	Incandescent lamps
Luminaire wattage [W]:	2x40 W	Colour / Finishing:	GR-94 / Metallic grey / Textured
IP degree of protection:	IP65	Impact resistance / impact energy:	IK06 1J xx3
Protection class:	I	Optic:	S/EW - Symmetric Extra-Wide
Net weight [kg]:	3.439	Overall length [mm]:	148
Overall width [mm]:	130	Overall height [mm]:	423

Mechanical features

Shape:	Rectangular	Housing material:	Aluminium
Diffuser material:	Glass		

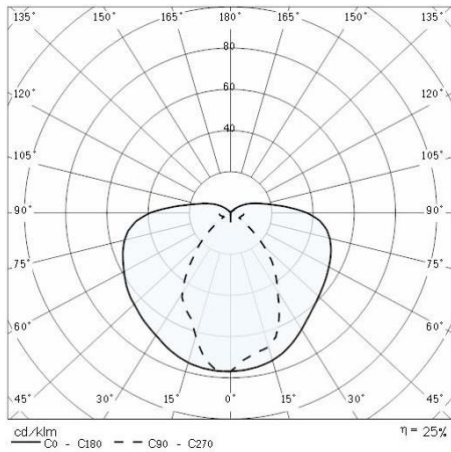
Installation

Application area:	Outdoor lighting	Mounting type:	Bulkhead
Min. ambient temperature [°C]:	-30	Max. ambient temperature [°C]:	45

Light features

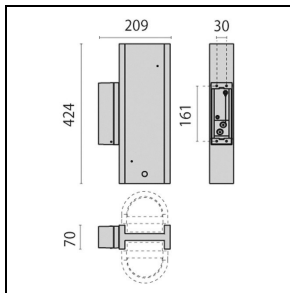
To maintain the regular updating of our products, PERFORMANCE IN LIGHTING reserves the right to make changes without prior notice. For the most up to date information we always recommend you read the latest version published on the website www.performanceinlighting.com. Delivered luminaire lumen outputs and power consumptions, including losses, are subject to a tolerance of +/- 7%, and unless otherwise stated the values apply to an ambient temperature of 25°C. Terms of warranty are available at <https://www.performanceinlighting.com/qr/company/led-warranty>

Photometric data

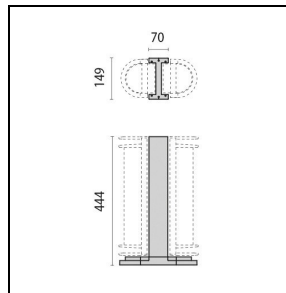


Optional accessories

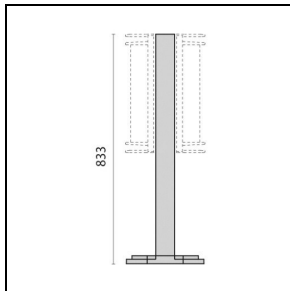
NIKKO+45



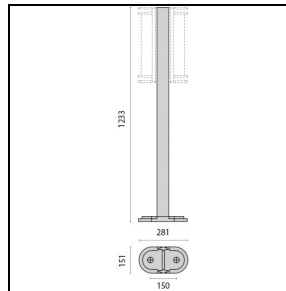
000441
Wall bracket 45
■ GR-94 / Metallic grey



000445
Post 45 444 mm
■ GR-94 / Metallic grey



000449
Post 45 833 mm
■ GR-94 / Metallic grey



000453
Post 45 1233 mm
■ GR-94 / Metallic grey

To maintain the regular updating of our products, PERFORMANCE iN LIGHTING reserves the right to make changes without prior notice. For the most up to date information we always recommend you read the latest version published on the website www.performanceinlighting.com. Delivered luminaire lumen outputs and power consumptions, including losses, are subject to a tolerance of +/- 7%, and unless otherwise stated the values apply to an ambient temperature of 25°C. Terms of warranty are available at <https://www.performanceinlighting.com/qr/company/led-warranty>