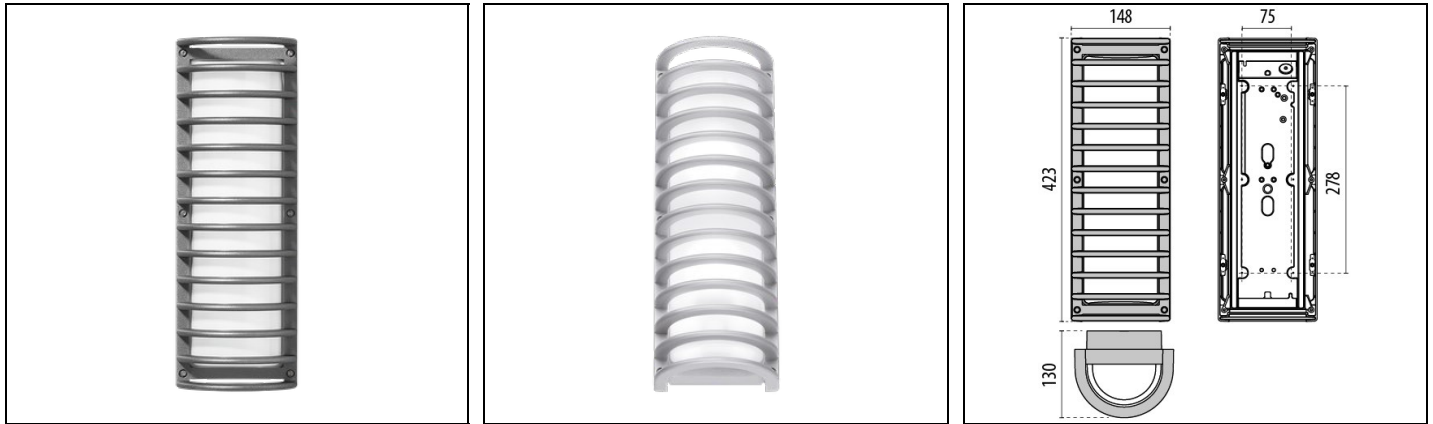


NIKKO+45/G LED DA

Part number 303119



Description

Wall, ceiling, bracket and post mounted luminaire for indoor and outdoor, comprising:

- Aluminium housing and guard (/G), polyester powder coat finish ISO 9227/12944 - ISO 9223 (C5)
- Pressed glass diffuser, internally coated, secured with the ring
- Technopolymer silicone sealing gasket
- Stainless steel locking hardware
- DA versions are dual power switch versions, designed with two drivers in parallel. Requires two separate lines
- Design by ROBERTO FIORATO
- Design by ROBERTO FIORATO

To maintain the regular updating of our products, PERFORMANCE IN LIGHTING reserves the right to make changes without prior notice. For the most up to date information we always recommend you read the latest version published on the website www.performanceinlighting.com. Delivered luminaire lumen outputs and power consumptions, including losses, are subject to a tolerance of +/- 7%, and unless otherwise stated the values apply to an ambient temperature of 25°C. Terms of warranty are available at <https://www.performanceinlighting.com/qr/company/led-warranty>

Product data

ETIM Group:	EG000027	ETIM Class:	EC002892
-------------	----------	-------------	----------

General information

Lampholder:	LED+LED	Light source:	LED LED
Lightsource lumen output [lm]:	1540	Luminaire lumen output [lm]:	766
Luminaire wattage [W]:	7.5 W + 7.5 W	Luminous efficacy [lm/W]:	51
CRI:	80	Colour temperature [K]:	4000
Colour / Finishing:	GR-94 / Metallic grey / Textured	IP degree of protection:	IP65
Impact resistance / impact energy:	IK06 1J xx3	Protection class:	I
Optic:	S/EW - Symmetric Extra-Wide	Net weight [kg]:	3.734
Overall length [mm]:	148	Overall width [mm]:	130
Overall height [mm]:	423		

Mechanical features

Shape:	Rectangular	Housing material:	Aluminium
Diffuser material:	Glass		

Electrical features

Voltage type:	AC	Input voltage [V AC]:	220/240
Input frequency [Hz]:	50/60	Power factor / COS Φ :	>0.9
Inrush current [A/ μ s]:	4 / 50	C10 1.5 mm ² :	26
C16 2.5 mm ² :	42	B10 1.5 mm ² :	15
B16 2.5 mm ² :	25		

Installation

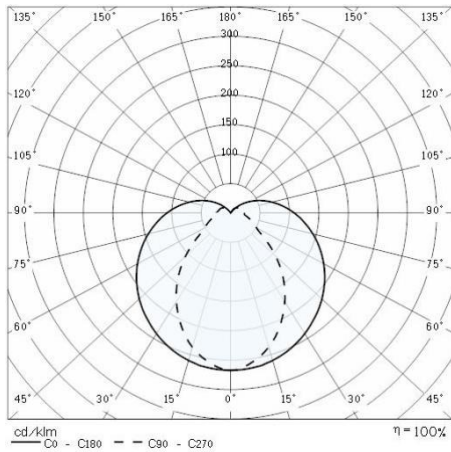
Application area:	Outdoor lighting	Mounting type:	Bulkhead
Min. ambient temperature [°C]:	-10	Max. ambient temperature [°C]:	35

Light features

MacAdam:	3	Lumen maintenance:	L80B10@50000h
Distribution of light emission:	Direct		

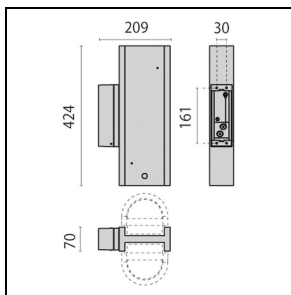
To maintain the regular updating of our products, PERFORMANCE IN LIGHTING reserves the right to make changes without prior notice. For the most up to date information we always recommend you read the latest version published on the website www.performanceinlighting.com. Delivered luminaire lumen outputs and power consumptions, including losses, are subject to a tolerance of +/- 7%, and unless otherwise stated the values apply to an ambient temperature of 25°C. Terms of warranty are available at <https://www.performanceinlighting.com/gr/company/led-warranty>

Photometric data

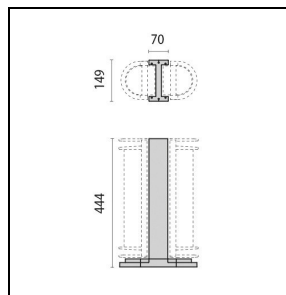


Optional accessories

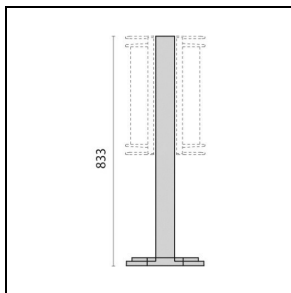
NIKKO+45



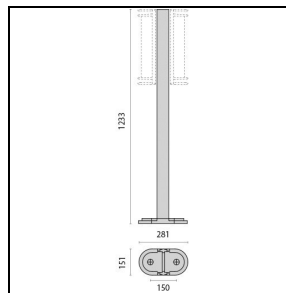
000441
Wall bracket 45
■ GR-94 / Metallic grey



000445
Post 45 444 mm
■ GR-94 / Metallic grey



000449
Post 45 833 mm
■ GR-94 / Metallic grey



000453
Post 45 1233 mm
■ GR-94 / Metallic grey

To maintain the regular updating of our products, PERFORMANCE iN LIGHTING reserves the right to make changes without prior notice. For the most up to date information we always recommend you read the latest version published on the website www.performanceinlighting.com. Delivered luminaire lumen outputs and power consumptions, including losses, are subject to a tolerance of +/- 7%, and unless otherwise stated the values apply to an ambient temperature of 25°C. Terms of warranty are available at <https://www.performanceinlighting.com/qr/company/led-warranty>