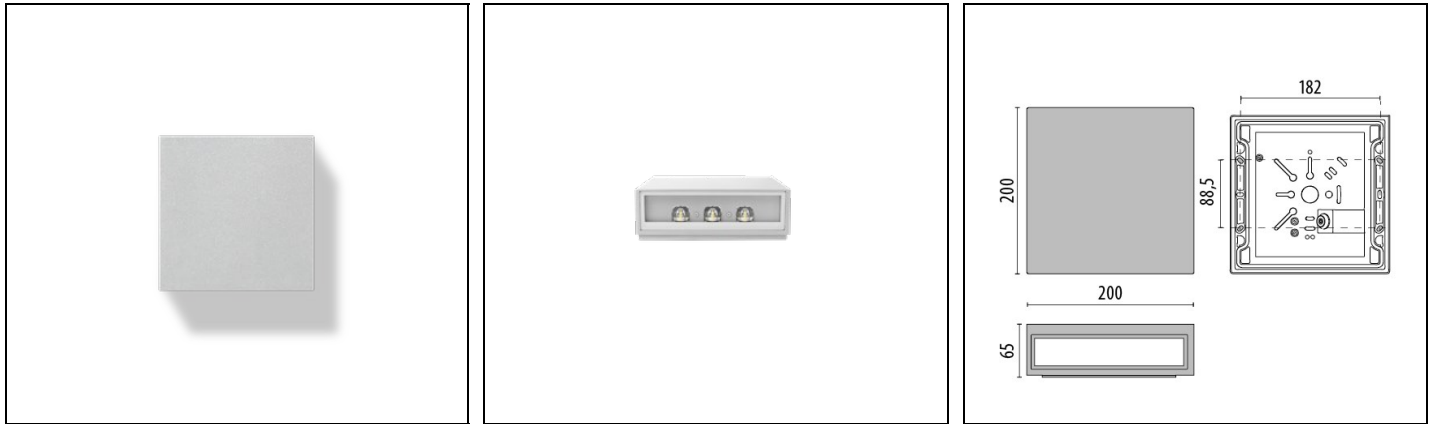


MIMIK 20 CP/T2

Part number 303752



Description

Wall-mounted LED luminaire, comprising:

- Die-cast aluminium housing, polyester powder coat finish ISO 9227/12944 - ISO 9223 (C5)
- Anti-ageing custom moulded silicone sealing gasket(s)
- Microprismatic, toughened, flat glass diffuser, silk-screened on the inside (MIMIK FLAT versions)
- Single (M) and dual (B) emission versions available
- Extra-clear, toughened, flat glass diffuser, silk-screened on the inside (MIMIK models)
- MIMIK models are equipped with high-transmittance polycarbonate optics with different light distributions to meet a large variety of lighting schemes
- Optimised asymmetric distribution for wide spacing and lighting-class levels matching (CP options)
- Built-in driver
- Stainless steel locking hardware
- EM/3P version is designed for multipurpose 3 hours sustained emergency lighting
- Ni-Cd 3,6 V, 4 Ah batteries, 24 hours recharge time
- Openable and maintainable luminaire (future-proof)

To maintain the regular updating of our products, PERFORMANCE IN LIGHTING reserves the right to make changes without prior notice. For the most up to date information we always recommend you read the latest version published on the website www.performanceinlighting.com. Delivered luminaire lumen outputs and power consumptions, including losses, are subject to a tolerance of +/- 7%, and unless otherwise stated the values apply to an ambient temperature of 25°C. Terms of warranty are available at <https://www.performanceinlighting.com/qr/company/led-warranty>

Product data

ETIM Group:	EG000027	ETIM Class:	EC002892
-------------	----------	-------------	----------

General information

Lampholder:	LED	Light source:	LED
Lightsource lumen output [lm]:	3360	Luminaire lumen output [lm]:	2384
Luminaire wattage [W]:	26 W	Luminous efficacy [lm/W]:	92
CRI:	70	Colour temperature [K]:	4000
Colour / Finishing:	GR-94 / Metallic grey / Textured	IP degree of protection:	IP65
Impact resistance / impact energy:	IK06 1J xx3	Protection class:	I
Optic:	CP/T2 - Cycle/Pedestrian Type II	Net weight [kg]:	1.968
Overall length [mm]:	200	Overall width [mm]:	65
Overall height [mm]:	200		

Mechanical features

Shape:	Rectangular	Housing material:	Aluminium
Diffuser material:	Glass		

Electrical features

Voltage type:	AC	Input voltage [V AC]:	220/240
Input frequency [Hz]:	50/60	Power factor / COS Φ :	>0.9
Inrush current [A/ μ s]:	5 / 70	C10 1.5 mm ² :	41
C16 2.5 mm ² :	66	B10 1.5 mm ² :	27
B16 2.5 mm ² :	44		

Installation

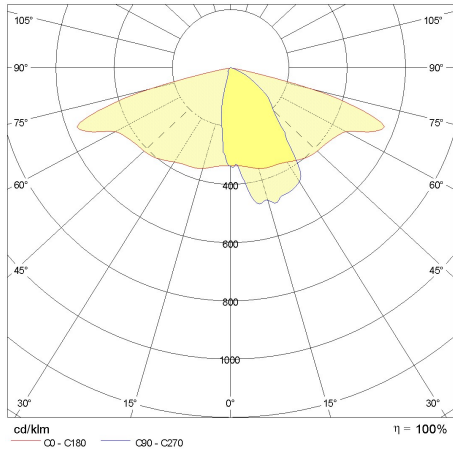
Application area:	Outdoor lighting	Mounting type:	Exterior wall
Min. ambient temperature [°C]:	-20	Max. ambient temperature [°C]:	35

Light features

MacAdam:	3	Lumen maintenance:	L80B10@60000h
Distribution of light emission:	Direct	Zero light pollution (ULR = 0%):	

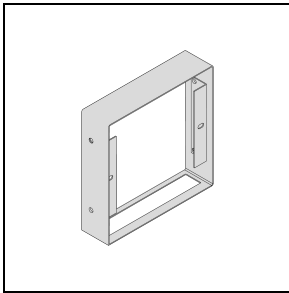
To maintain the regular updating of our products, PERFORMANCE IN LIGHTING reserves the right to make changes without prior notice. For the most up to date information we always recommend you read the latest version published on the website www.performanceinlighting.com. Delivered luminaire lumen outputs and power consumptions, including losses, are subject to a tolerance of +/- 7%, and unless otherwise stated the values apply to an ambient temperature of 25°C. Terms of warranty are available at <https://www.performanceinlighting.com/gr/company/led-warranty>

Photometric data



Optional accessories

MIMIK CP/T2 - CP/T3 - A60/W



310444

Customising ring / Facade Accessory

■ GR-94 / Metallic grey