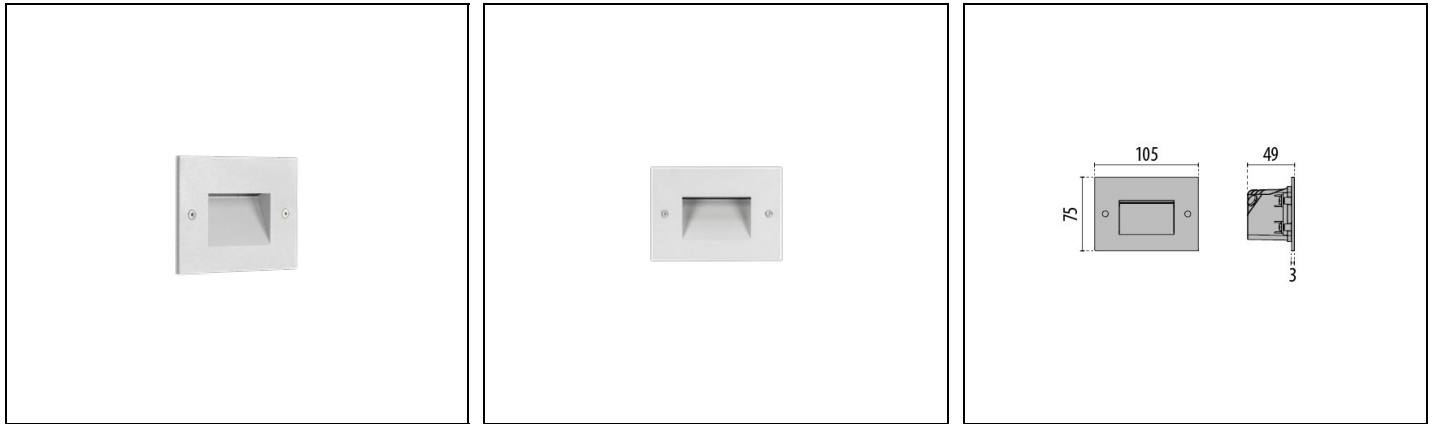


INSERT+ ZERO

Part number 304109



Description

Wall recessed luminaire, for indoor and outdoor, comprising:

- Die-cast aluminium housing, polyester powder coat finish ISO 9227/12944 - ISO 9223 (C5)
- Inner satin toughened flat glass diffuser
- EPDM sealing gasket
- Stainless steel locking hardware
- Recessed box (503) included
- The luminaire is suitable for through-wiring

Product data

| | | | |
|-------------|----------|-------------|----------|
| ETIM Group: | EG000027 | ETIM Class: | EC002892 |
|-------------|----------|-------------|----------|

General information

| | | | |
|------------------------------------|---------------------------|------------------------------|-------|
| Lampholder: | LED | Light source: | LED |
| Lightsource lumen output [lm]: | 530 | Luminaire lumen output [lm]: | 142 |
| Luminaire wattage [W]: | 45 W | Luminous efficacy [lm/W]: | 32 |
| CRI: | 80 | Colour temperature [K]: | 4000 |
| Colour / Finishing: | WH-87 / White / Textured | IP degree of protection: | IP65 |
| Impact resistance / impact energy: | IK08 5J xx5 | Protection class: | I |
| Optic: | A29/M - Asymmetric Medium | Net weight [kg]: | 0.271 |
| Overall length [mm]: | 107 | Overall width [mm]: | 49 |
| Overall height [mm]: | 77 | | |

Mechanical features

| | | | |
|--------------------|-------------|-------------------|-----------|
| Shape: | Rectangular | Housing material: | Aluminium |
| Diffuser material: | Glass | | |

Electrical features

| | | | |
|------------------------------|---------|-----------------------------|---------|
| Voltage type: | AC | Input voltage [V AC]: | 220/240 |
| Input frequency [Hz]: | 50/60 | Power factor / COS Φ : | 0.6 |
| Inrush current [A/ μ s]: | 25 / 80 | C10 1.5 mm ² : | 78 |
| C16 2.5 mm ² : | 128 | B10 1.5 mm ² : | 45 |
| B16 2.5 mm ² : | 75 | | |

Installation

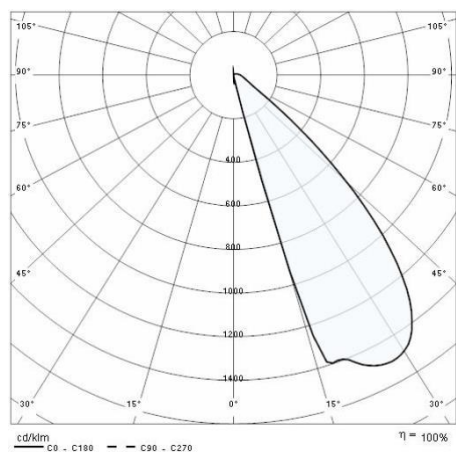
| | | | |
|--------------------------------|------------------|--------------------------------|-----------|
| Application area: | Outdoor lighting | Mounting type: | Steplight |
| Min. ambient temperature [°C]: | -20 | Max. ambient temperature [°C]: | 45 |

Light features

| | | | |
|---------------------------------|--------|--------------------|---------------|
| MacAdam: | 3 | Lumen maintenance: | L90B10@36000h |
| Distribution of light emission: | Direct | | |

To maintain the regular updating of our products, PERFORMANCE iN LIGHTING reserves the right to make changes without prior notice. For the most up to date information we always recommend you read the latest version published on the website www.performanceinlighting.com. Delivered luminaire lumen outputs and power consumptions, including losses, are subject to a tolerance of +/- 7%, and unless otherwise stated the values apply to an ambient temperature of 25°C. Terms of warranty are available at <https://www.performanceinlighting.com/qr/company/led-warranty>

Photometric data



To maintain the regular updating of our products, PERFORMANCE IN LIGHTING reserves the right to make changes without prior notice. For the most up to date information we always recommend you read the latest version published on the website www.performanceinlighting.com. Delivered luminaire lumen outputs and power consumptions, including losses, are subject to a tolerance of +/- 7%, and unless otherwise stated the values apply to an ambient temperature of 25°C. Terms of warranty are available at <https://www.performanceinlighting.com/qr/company/led-warranty>