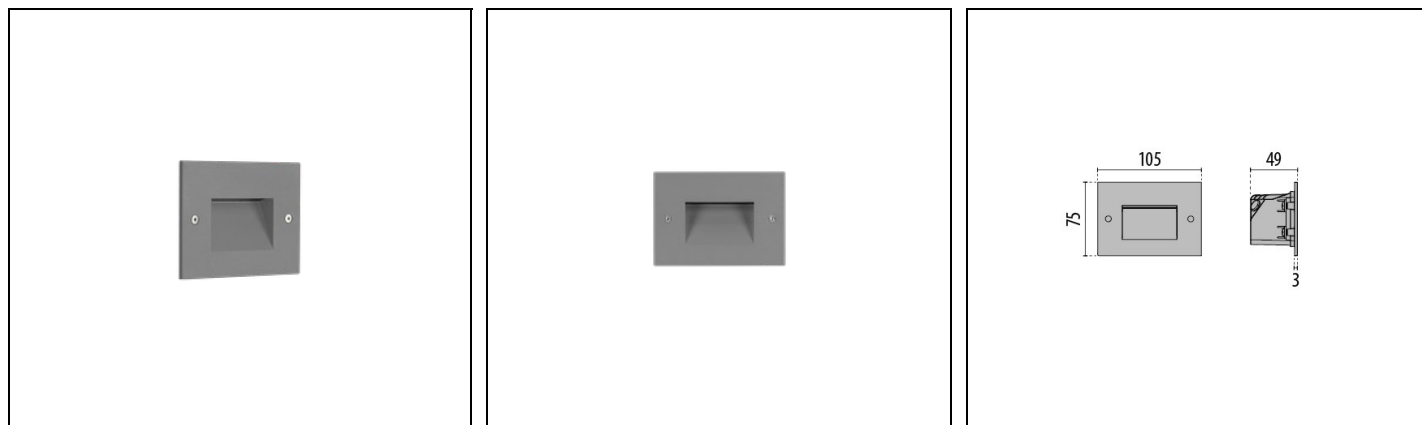


# INSERT+ ZERO

Part number 304111



## Description

Wall recessed luminaire, for indoor and outdoor, comprising:

- Die-cast aluminium housing, polyester powder coat finish ISO 9227/12944 - ISO 9223 (C5)
- Inner satin toughened flat glass diffuser
- EPDM sealing gasket
- Stainless steel locking hardware
- Recessed box (503) included
- The luminaire is suitable for through-wiring

To maintain the regular updating of our products, PERFORMANCE IN LIGHTING reserves the right to make changes without prior notice. For the most up to date information we always recommend you read the latest version published on the website [www.performanceinlighting.com](http://www.performanceinlighting.com). Delivered luminaire lumen outputs and power consumptions, including losses, are subject to a tolerance of +/- 7%, and unless otherwise stated the values apply to an ambient temperature of 25°C. Terms of warranty are available at <https://www.performanceinlighting.com/qr/company/led-warranty>

## Product data

ETIM Group:	EG000027	ETIM Class:	EC002892
-------------	----------	-------------	----------

## General information

Lampholder:	LED	Light source:	LED
Lightsource lumen output [lm]:	530	Luminaire lumen output [lm]:	142
Luminaire wattage [W]:	45 W	Luminous efficacy [lm/W]:	32
CRI:	80	Colour temperature [K]:	4000
Colour / Finishing:	GR-94 / Metallic grey / Textured	IP degree of protection:	IP65
Impact resistance / impact energy:	IK08 5J xx5	Protection class:	I
Optic:	A29/M - Asymmetric Medium	Net weight [kg]:	0.271
Overall length [mm]:	107	Overall width [mm]:	49
Overall height [mm]:	77		

## Mechanical features

Shape:	Rectangular	Housing material:	Aluminium
Diffuser material:	Glass		

## Electrical features

Voltage type:	AC	Input voltage [V AC]:	220/240
Input frequency [Hz]:	50/60	Power factor / COS $\Phi$ :	0.6
Inrush current [A/ $\mu$ s]:	25 / 80	C10 1.5 mm <sup>2</sup> :	78
C16 2.5 mm <sup>2</sup> :	128	B10 1.5 mm <sup>2</sup> :	45
B16 2.5 mm <sup>2</sup> :	75		

## Installation

Application area:	Outdoor lighting	Mounting type:	Steplight
Min. ambient temperature [°C]:	-20	Max. ambient temperature [°C]:	45

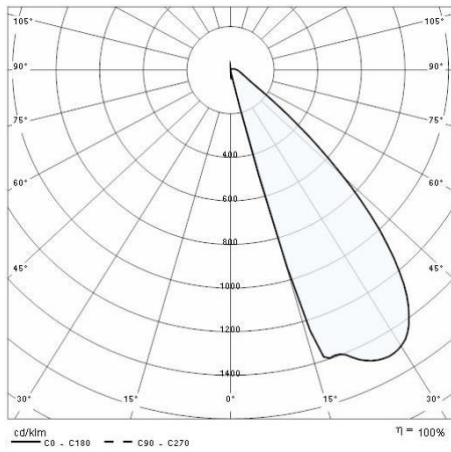
## Light features

MacAdam:	3	Lumen maintenance:	L90B10@36000h
Distribution of light emission:	Direct		

To maintain the regular updating of our products, PERFORMANCE IN LIGHTING reserves the right to make changes without prior notice. For the most up to date information we always recommend you read the latest version published on the website [www.performanceinlighting.com](http://www.performanceinlighting.com). Delivered luminaire lumen outputs and power consumptions, including losses, are subject to a tolerance of +/- 7%, and unless otherwise stated the values apply to an ambient temperature of 25°C. Terms of warranty are available at <https://www.performanceinlighting.com/qr/company/led-warranty>

## Photometric data

---



To maintain the regular updating of our products, PERFORMANCE IN LIGHTING reserves the right to make changes without prior notice. For the most up to date information we always recommend you read the latest version published on the website [www.performanceinlighting.com](http://www.performanceinlighting.com). Delivered luminaire lumen outputs and power consumptions, including losses, are subject to a tolerance of +/- 7%, and unless otherwise stated the values apply to an ambient temperature of 25°C. Terms of warranty are available at <https://www.performanceinlighting.com/qr/company/led-warranty>

For information:  
**PERFORMANCE IN LIGHTING S.p.A. Headquarters - Italy**  
Viale del Lavoro 9/11  
37030 Colognola ai Colli Verona - Italy  
Tel. +39 045 61 59 211

[info.it@pil.lighting](mailto:info.it@pil.lighting)  
[www.performanceinlighting.com](http://www.performanceinlighting.com)