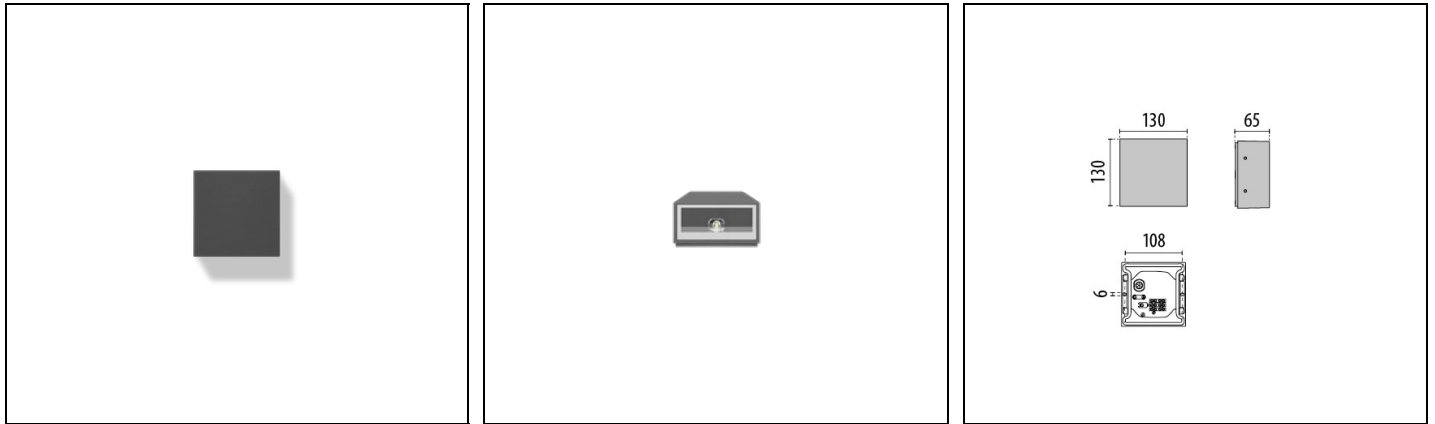


MIMIK 10 M CP/T3

Part number 304856



Description

Wall-mounted LED luminaire, comprising:

- Die-cast aluminium housing, polyester powder coat finish ISO 9227/12944 - ISO 9223 (C5)
- Anti-ageing custom moulded silicone sealing gasket(s)
- Built-in driver
- Stainless steel locking hardware
- Single (M) and dual (B) emission versions available
- The MIMIK versions are available with asymmetric (CP) or circular (C/I) optic options. In the dual emission versions (B), the two different beam types are combined.
- Optimised asymmetric distribution for wide spacing and lighting-class levels matching (CP options)
- Openable and maintainable luminaire (future-proof)

To maintain the regular updating of our products, PERFORMANCE IN LIGHTING reserves the right to make changes without prior notice. For the most up to date information we always recommend you read the latest version published on the website www.performanceinlighting.com. Delivered luminaire lumen outputs and power consumptions, including losses, are subject to a tolerance of +/- 7%, and unless otherwise stated the values apply to an ambient temperature of 25°C. Terms of warranty are available at <https://www.performanceinlighting.com/qr/company/led-warranty>

Product data

ETIM Group:	EG000027	ETIM Class:	EC002892
-------------	----------	-------------	----------

General information

Lampholder:	LED	Light source:	LED
Lightsource lumen output [lm]:	593	Luminaire lumen output [lm]:	376
Luminaire wattage [W]:	5 W	Luminous efficacy [lm/W]:	75
CRI:	70	Colour temperature [K]:	4000
Colour / Finishing:	AN-g6 / Anthracite gray / Textured	IP degree of protection:	IP65
Impact resistance / impact energy:	IK05 0.7J xx3	Protection class:	I
Optic:	CP/T3 - Cycle/Pedestrian Type III	Net weight [kg]:	0.956
Overall length [mm]:	127	Overall width [mm]:	65
Overall height [mm]:	127		

Mechanical features

Shape:	Square \leq 150 mm	Housing material:	Aluminium
Diffuser material:	Glass		

Electrical features

Voltage type:	AC	Input voltage [V AC]:	220/240
Input frequency [Hz]:	50/60	Power factor / COS Φ :	>0.9
Inrush current [A/ μ s]:	5 / 25	C10 1.5 mm ² :	64
C16 2.5 mm ² :	103	B10 1.5 mm ² :	64
B16 2.5 mm ² :	103		

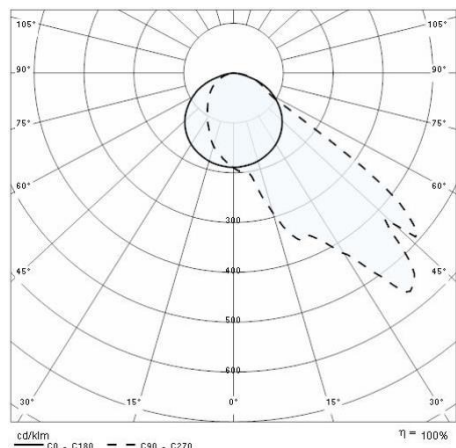
Installation

Application area:	Outdoor lighting	Mounting type:	Exterior wall
Min. ambient temperature [°C]:	-20	Max. ambient temperature [°C]:	40

Light features

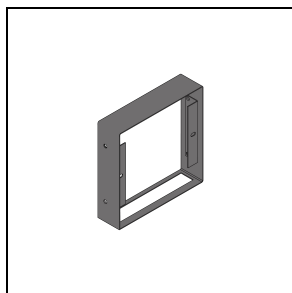
MacAdam:	3	Lumen maintenance:	L80B10@6000oh
Distribution of light emission:	Direct	Zero light pollution (ULR = 0%):	

Photometric data



Optional accessories

MIMIK 10 - FLAT M



3106884

Customising ring / Facade Accessory
M

■ AN-g6 / Anthracite gray