

TRY 2A/M

Part number 305664



Description

LED system for indoor lighting consisting of luminaires and electrified RAIL, suitable for commercial and industrial applications, comprising:

- Extruded aluminium luminaire housing, polyester powder coat, white finish
- High-transparency polycarbonate optics
- Double asymmetrical optics (2A/M)
- Tool-free springs installation of the luminaire to the electric RAIL
- RAILS feature internal 3 phases 2.5 mm² cables, fast connectors and circuit breakers for a quick installation of the luminaire
- EUROSTANDARD PLUS® electric track module for installation of compatible projectors (AS... LED) available as accessory

To maintain the regular updating of our products, PERFORMANCE IN LIGHTING reserves the right to make changes without prior notice. For the most up to date information we always recommend you read the latest version published on the website www.performanceinlighting.com. Delivered luminaire lumen outputs and power consumptions, including losses, are subject to a tolerance of +/- 7%, and unless otherwise stated the values apply to an ambient temperature of 25°C. Terms of warranty are available at <https://www.performanceinlighting.com/qr/company/led-warranty>

Product data

| | | | |
|-------------|----------|-------------|----------|
| ETIM Group: | EG000027 | ETIM Class: | EC002892 |
|-------------|----------|-------------|----------|

General information

| | | | |
|------------------------------------|--|------------------------------|------|
| Lampholder: | LED | Light source: | LED |
| Lightsource lumen output [lm]: | 4547 | Luminaire lumen output [lm]: | 3865 |
| Luminaire wattage [W]: | 25 W | Luminous efficacy [lm/W]: | 155 |
| CRI: | 80 | Colour temperature [K]: | 3000 |
| Colour / Finishing: | WH-RAL9003 / White RAL9003 / Glossy | IP degree of protection: | IP40 |
| Impact resistance / impact energy: | IK05 0.8J xx3 | Protection class: | I |
| Optic: | 2A/M - Double Asymmetric Medium | Net weight [kg]: | 2.2 |
| Overall length [mm]: | 1434 | Overall width [mm]: | 66 |
| Overall height [mm]: | 66 | | |

Mechanical features

| | | | |
|--------------------|-------------|----------------------|-----------|
| Shape: | Rectangular | Housing material: | Aluminium |
| Diffuser material: | Plastic | Glow wire test [°C]: | 650 °C |

Electrical features

| | | | |
|---------------------------|---------|---------------------------|----------|
| Voltage type: | AC/DC | Input voltage [V AC]: | 220/240 |
| Input frequency [Hz]: | 0/50/60 | Power factor / COS Φ: | 0.9 |
| Input voltage [V DC]: | 168/275 | Inrush current [A/μs]: | 25 / 242 |
| C10 1.5 mm ² : | 21 | C16 2.5 mm ² : | 34 |
| B10 1.5 mm ² : | 12 | B16 2.5 mm ² : | 20 |

Installation

| | | | |
|--------------------------------|-----------------|--------------------------------|-----------------|
| Application area: | Indoor lighting | Mounting type: | Trunking system |
| Min. ambient temperature [°C]: | -25 | Max. ambient temperature [°C]: | 40 |

Light features

| | | | |
|---------------------------------|--------|--------------------|---------------|
| MacAdam: | 3 | Lumen maintenance: | L80B10@60000h |
| Distribution of light emission: | Direct | UGR max.: | 20.0 |

To maintain the regular updating of our products, PERFORMANCE IN LIGHTING reserves the right to make changes without prior notice. For the most up to date information we always recommend you read the latest version published on the website www.performanceinlighting.com. Delivered luminaire lumen outputs and power consumptions, including losses, are subject to a tolerance of +/- 7%, and unless otherwise stated the values apply to an ambient temperature of 25°C. Terms of warranty are available at <https://www.performanceinlighting.com/qr/company/led-warranty>

Photometric data



Mandatory accessories

RAIL-A TRY 5P



310554

RAIL-A TRY 5P - L 1435 mm (2 stainless steel brackets included)

WH-RAL9003 / White RAL9003

RAIL-M TRY 5P



310555

RAIL-M TRY 5P - L 1435 mm (2 stainless steel brackets included)

WH-RAL9003 / White RAL9003



310556

RAIL-M TRY 5P - L 2870 mm (4 stainless steel brackets included)

WH-RAL9003 / White RAL9003



310557

RAIL-M TRY 5P - L 4305 mm (6 stainless steel brackets included)

WH-RAL9003 / White RAL9003

To maintain the regular updating of our products, PERFORMANCE IN LIGHTING reserves the right to make changes without prior notice. For the most up to date information we always recommend you read the latest version published on the website www.performanceinlighting.com. Delivered luminaire lumen outputs and power consumptions, including losses, are subject to a tolerance of +/- 7%, and unless otherwise stated the values apply to an ambient temperature of 25°C. Terms of warranty are available at <https://www.performanceinlighting.com/qr/company/led-warranty>

Optional accessories

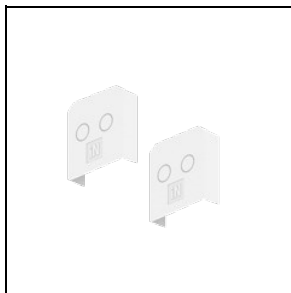
TRY



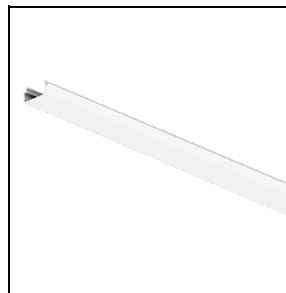
14-00354
Suspension kit (2 m)



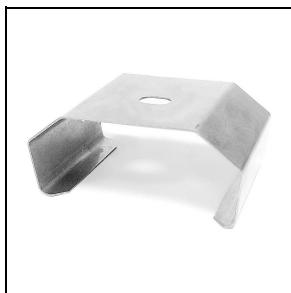
310550
Chain suspension



310551
Closing plates for RAIL (nr. 2)
■ WH-RAL9003 / White RAL9003



310553
Cover PC RAIL - L 1435 mm
■ WH-RAL9003 / White RAL9003



3100243
Stainless steel fast fit strong for quick ceiling mount (2 pieces)



3100244
Stainless steel fast fit strong for quick ceiling mount (50 pieces)



3100245
Stainless steel fast fit strong for quick ceiling mount + hooks (2 pieces)



3100246
Stainless steel fast fit strong for quick ceiling mount + hooks (50 pieces)

TRY TRACK SYSTEM

To maintain the regular updating of our products, PERFORMANCE IN LIGHTING reserves the right to make changes without prior notice. For the most up to date information we always recommend you read the latest version published on the website www.performanceinlighting.com. Delivered luminaire lumen outputs and power consumptions, including losses, are subject to a tolerance of +/- 7%, and unless otherwise stated the values apply to an ambient temperature of 25°C. Terms of warranty are available at <https://www.performanceinlighting.com/qr/company/led-warranty>



310566

Rail system for floodlights

■ WH-RAL9003 / White RAL9003