

# THEOS GLASS MINI SR/125

Part number 306480



## Description

Series of LED street lighting luminaires, comprising:

- Die-cast aluminium housing, polyester powder coat finish ISO 9227/12944 - ISO 9223 (C5)
- Coated die-cast aluminium captive trim, hinged to the housing
- Coated die-cast aluminium pole-top adaptor for pole  $\varnothing$  60 / 76 mm
- High-transparency polycarbonate optics
- The Secure Light Distribution (SLD) system guarantees uniform light distribution even in the remote case of LED failures
- Anti-ageing custom moulded silicone sealing gasket(s) with resilient elastic return capacity
- Extra clear, toughened, flat glass diffuser
- The integral switch splitter automatically disconnects the driver from mains when opened
- Built-in driver
- Integral surge protection device (SPD) against mains overvoltages up to 10 kV (CM/DM)
- Stainless steel locking hardware
- Complete with 1 m H07RN-F 2x1.5 mm<sup>2</sup> or H07RN-F 4x1.5 mm<sup>2</sup> (dimmable options) cable, for mains connection without opening the luminaire
- StReet optic options: SR/075 usually for narrow roads ( $0.5 \geq L/H \geq 0.75$ ), SR/100 for two-lane roads ( $L/H = 1$ ), SR/125 for wide streets and ( $L/H = 1.25$ ), SR/150 for wide roads/parking lots ( $L/H = 1.5$ ) schemes. L/H ratio (L-road width/H-pole height)
- UNI 10819 light pollution standards compliant (0% ULOR rating)
- Other colour temperatures (CCT) and colour rendering index (CRI) options available. Consult factory
- Third-party controls NEMA 7-pin socket options available. Consult factory
- CLO (Constant Light Output) options available. Consult factory
- Design by SILVIA PAOLA PENNACCHIO
- Design by SILVIA PAOLA PENNACCHIO

To maintain the regular updating of our products, PERFORMANCE IN LIGHTING reserves the right to make changes without prior notice. For the most up to date information we always recommend you read the latest version published on the website [www.performanceinlighting.com](http://www.performanceinlighting.com). Delivered luminaire lumen outputs and power consumptions, including losses, are subject to a tolerance of +/- 7%, and unless otherwise stated the values apply to an ambient temperature of 25°C. Terms of warranty are available at <https://www.performanceinlighting.com/qr/company/led-warranty>

## Product data

ETIM Group:	EG000027	ETIM Class:	EC000062
-------------	----------	-------------	----------

## General information

Lampholder:	LED	Light source:	LED
Lightsource lumen output [lm]:	11949	Luminaire lumen output [lm]:	9722
Luminaire wattage [W]:	71 W	Luminous efficacy [lm/W]:	137
CRI:	70	Colour temperature [K]:	4000
Colour / Finishing:	AN-g6 / Anthracite gray / Textured	IP degree of protection:	IP66
Impact resistance / impact energy:	IK08 6J xx5	Protection class:	II
Optic:	SR/125 - Street	Net weight [kg]:	6.6
Overall length [mm]:	506	Overall width [mm]:	280
Overall height [mm]:	193		

## Mechanical features

Shape:	Rectangular	Housing material:	Aluminium
Diffuser material:	Glass	Glow wire test [°C]:	960 °C
Lateral exposed area [m <sup>2</sup> ]:	0.04	Top exposed area [m <sup>2</sup> ]:	0.11

## Electrical features

Voltage type:	AC	Input voltage [V AC]:	220/240
Input frequency [Hz]:	50/60	Power factor / COS Φ:	>0.9
Surge protection   Common [kV]:	10.000000	Surge protection   Differential [kV]:	10.000000
Inrush current [A/μs]:	43 / 260	C10 1.5 mm <sup>2</sup> :	10
C16 2.5 mm <sup>2</sup> :	17	B10 1.5 mm <sup>2</sup> :	6
B16 2.5 mm <sup>2</sup> :	10		

## Installation

Application area:	Outdoor lighting	Mounting type:	Streetlight
Min. ambient temperature [°C]:	-40	Max. ambient temperature [°C]:	50
Min. distance from lighted object [m]:	0.50		

## Light features

MacAdam:	3	Lumen maintenance:	L90B10@100000h
Distribution of light emission:	Direct	Luminous Intensity Class:	G4
Zero light pollution (ULR = 0%):		IPEA* (road lighting):	A6+
IPEA* (large areas, roundabouts):	A8+	IPEA* (cycle-pedestrian):	A5+
IPEA* (green areas):	A5+	IPEA* (historic city centers):	A11+

To maintain the regular updating of our products, PERFORMANCE IN LIGHTING reserves the right to make changes without prior notice. For the most up to date information we always recommend you read the latest version published on the website [www.performanceinlighting.com](http://www.performanceinlighting.com). Delivered luminaire lumen outputs and power consumptions, including losses, are subject to a tolerance of +/- 7%, and unless otherwise stated the values apply to an ambient temperature of 25°C. Terms of warranty are available at <https://www.performanceinlighting.com/qr/company/led-warranty>

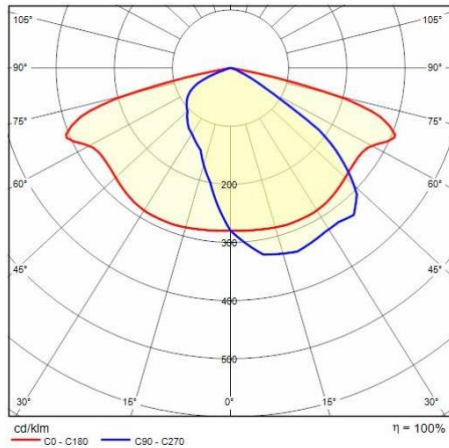
---

To maintain the regular updating of our products, PERFORMANCE IN LIGHTING reserves the right to make changes without prior notice. For the most up to date information we always recommend you read the latest version published on the website [www.performanceinlighting.com](http://www.performanceinlighting.com). Delivered luminaire lumen outputs and power consumptions, including losses, are subject to a tolerance of +/- 7%, and unless otherwise stated the values apply to an ambient temperature of 25°C. Terms of warranty are available at <https://www.performanceinlighting.com/qr/company/led-warranty>

For information:  
**PERFORMANCE IN LIGHTING S.p.A. Headquarters - Italy**  
Viale del Lavoro 9/11  
37030 Colognola ai Colli Verona - Italy  
Tel. +39 045 61 59 211

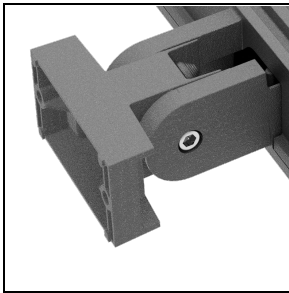
[info.it@pil.lighting](mailto:info.it@pil.lighting)  
[www.performanceinlighting.com](http://www.performanceinlighting.com)

## Photometric data



## Optional accessories

### THEOS GLASS



**14174796**

Wall mount bracket THEOS

■ AN-g6 / Anthracite gray



**14077796**

Hot-dipped galvanized wall angled steel bracket, cataphoresis and polyester powder

■ AN-g6 / Anthracite gray

To maintain the regular updating of our products, PERFORMANCE IN LIGHTING reserves the right to make changes without prior notice. For the most up to date information we always recommend you read the latest version published on the website [www.performanceinlighting.com](http://www.performanceinlighting.com). Delivered luminaire lumen outputs and power consumptions, including losses, are subject to a tolerance of +/- 7%, and unless otherwise stated the values apply to an ambient temperature of 25°C. Terms of warranty are available at <https://www.performanceinlighting.com/qr/company/led-warranty>