

# INSERT+ 3 A26/W

Part number 3100882



## Description

Solid and hollow wall recessed luminaire, for indoor and outdoor, comprising :

- Die-cast aluminium housing and trim, polyester powder coat finish ISO 9227/12944 - ISO 9223 (C5)
- Extra-clear toughened flat glass diffuser (A26/W versions)
- Inner satin toughened flat glass diffuser
- Anti-ageing custom moulded silicone sealing gasket(s)
- IP-rated external socket-plug fast connector (QUICK), complete with factory pre-wired cable
- Electrical connector for cables  $\varnothing 7 - \varnothing 12$  mm
- Built-in driver
- Stainless steel locking hardware
- Recessed box to be ordered separately
- Supplied with 0,5 m pre-wired H07RN-F cable
- Anti-tampering locking kit available as accessory
- Available for thorough wiring as accessories. Connectors fit  $\varnothing 7 - \varnothing 10,5$  mm and  $\varnothing 14 - \varnothing 17$  mm cables

To maintain the regular updating of our products, PERFORMANCE IN LIGHTING reserves the right to make changes without prior notice. For the most up to date information we always recommend you read the latest version published on the website [www.performanceinlighting.com](http://www.performanceinlighting.com). Delivered luminaire lumen outputs and power consumptions, including losses, are subject to a tolerance of +/- 7%, and unless otherwise stated the values apply to an ambient temperature of 25°C. Terms of warranty are available at <https://www.performanceinlighting.com/qr/company/led-warranty>

## Product data

ETIM Group:	EG000027	ETIM Class:	EC002892
-------------	----------	-------------	----------

## General information

Lampholder:	LED	Light source:	LED
Lightsource lumen output [lm]:	3585	Luminaire lumen output [lm]:	1399
Luminaire wattage [W]:	26 W	Luminous efficacy [lm/W]:	54
CRI:	70	Colour temperature [K]:	4000
Colour / Finishing:	AN-g6 / Anthracite gray / Textured	IP degree of protection:	IP66
Impact resistance / impact energy:	IK10 20J xxg	Protection class:	I
Optic:	A26/W - Asymmetric Wide	Net weight [kg]:	2.004
Overall length [mm]:	284	Overall width [mm]:	90
Overall height [mm]:	284		

## Mechanical features

Shape:	Square $150 \leq x \leq 300$ mm	Housing material:	Aluminium
Diffuser material:	Glass		

## Electrical features

Voltage type:	AC	Input voltage [V AC]:	220/240
Input frequency [Hz]:	50/60	Power factor / COS $\Phi$ :	>0.9
Inrush current [A/ $\mu$ s]:	5 / 70	C10 1.5 mm <sup>2</sup> :	41
C16 2.5 mm <sup>2</sup> :	66	B10 1.5 mm <sup>2</sup> :	27
B16 2.5 mm <sup>2</sup> :	44		

## Installation

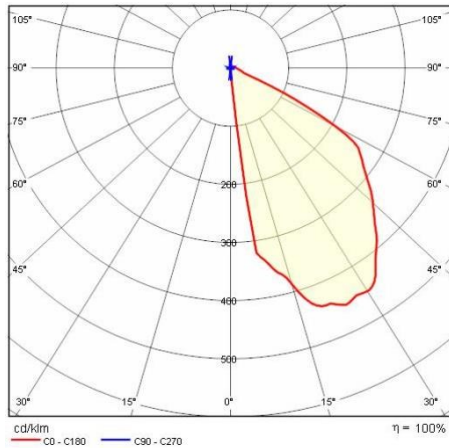
Application area:	Outdoor lighting	Mounting type:	Steplight
Min. ambient temperature [°C]:	-20	Max. ambient temperature [°C]:	35

## Light features

MacAdam:	5	Lumen maintenance:	L80B10@125000h
Distribution of light emission:	Direct		

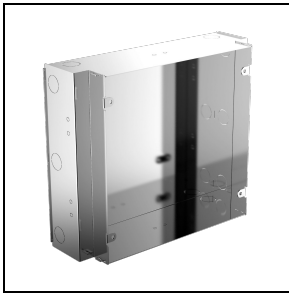
To maintain the regular updating of our products, PERFORMANCE IN LIGHTING reserves the right to make changes without prior notice. For the most up to date information we always recommend you read the latest version published on the website [www.performanceinlighting.com](http://www.performanceinlighting.com). Delivered luminaire lumen outputs and power consumptions, including losses, are subject to a tolerance of +/- 7%, and unless otherwise stated the values apply to an ambient temperature of 25°C. Terms of warranty are available at <https://www.performanceinlighting.com/qr/company/led-warranty>

## Photometric data



## Mandatory accessories

### INSERT+3



**3100883**

Recessed box INSERT+3

 INOX / Stainless steel

## Optional accessories

### INSERT+ 3



**3100992**

Stainless steel, anti-tamper locking screws



**310495**

Connection Kit Y 3-way Ø 14-17 mm IP68

To maintain the regular updating of our products, PERFORMANCE iN LIGHTING reserves the right to make changes without prior notice. For the most up to date information we always recommend you read the latest version published on the website [www.performanceinlighting.com](http://www.performanceinlighting.com). Delivered luminaire lumen outputs and power consumptions, including losses, are subject to a tolerance of +/- 7%, and unless otherwise stated the values apply to an ambient temperature of 25°C. Terms of warranty are available at <https://www.performanceinlighting.com/qr/company/led-warranty>



**310496**

Connection Kit Y 3-way Ø 7-10,5 mm  
IP68

To maintain the regular updating of our products, PERFORMANCE IN LIGHTING reserves the right to make changes without prior notice. For the most up to date information we always recommend you read the latest version published on the website [www.performanceinlighting.com](http://www.performanceinlighting.com). Delivered luminaire lumen outputs and power consumptions, including losses, are subject to a tolerance of +/- 7%, and unless otherwise stated the values apply to an ambient temperature of 25°C. Terms of warranty are available at <https://www.performanceinlighting.com/qr/company/led-warranty>