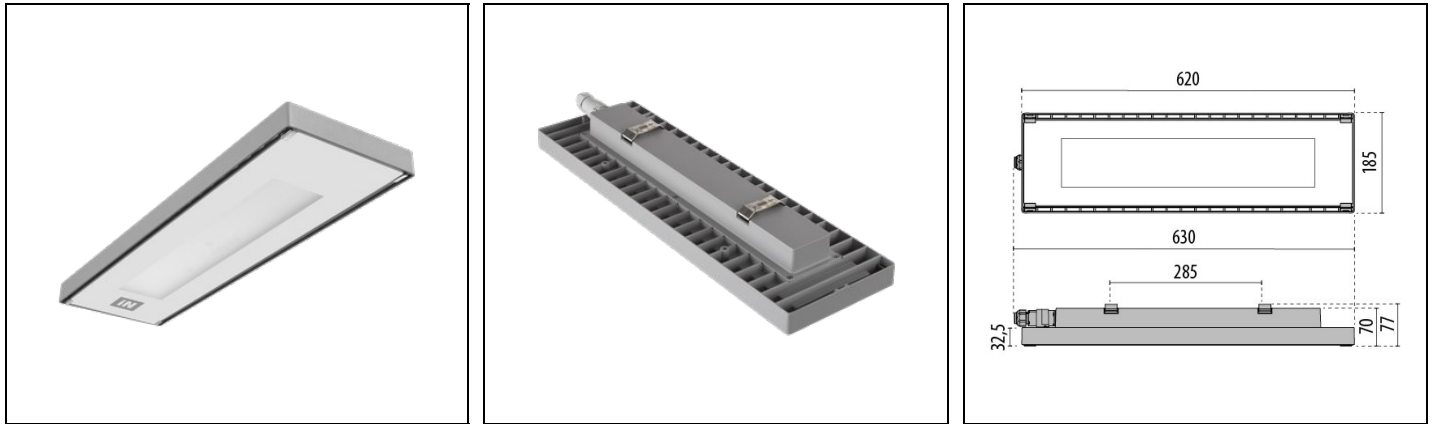


LM4 S/EW

Part number 3101705



Description

Ceiling mounted LED luminaire for indoor and outdoor industrial applications, comprising:

- Die-cast aluminium housing and cover, polyester powder coat finish ISO 9227/12944 - ISO 9223 (C5)
- Extra clear, toughened, flat glass diffuser, matt and silk-screened on the inside
- Glazing diffuser permanently sealed to the housing trough high-temperature resistant silicone
- Anti-ageing custom moulded silicone sealing gasket(s) with resilient elastic return capacity
- IP66-rated, PA66 with silver-plated brass contacts, fast connector, complete with factory pre-wired cable, for mains connection without opening the luminaire, for cables $\varnothing 9$ - $\varnothing 12$ mm
- Stainless steel locking hardware
- Stainless steel locking springs for the glass
- Stainless steel springs for quick installation
- EM versions are complete with emergency device that can operate on battery for 1 hour. Product can be used for general or emergency lighting
- Static ON/OFF or dimmable DALI options available
- Through-wiring version available . Consult factory
- Other colour temperatures (CCT) and colour rendering index (CRI) options available. Consult factory

To maintain the regular updating of our products, PERFORMANCE IN LIGHTING reserves the right to make changes without prior notice. For the most up to date information we always recommend you read the latest version published on the website www.performanceinlighting.com. Delivered luminaire lumen outputs and power consumptions, including losses, are subject to a tolerance of +/- 7%, and unless otherwise stated the values apply to an ambient temperature of 25°C. Terms of warranty are available at <https://www.performanceinlighting.com/qr/company/led-warranty>

Product data

ETIM Group:	EG000027	ETIM Class:	EC002892
-------------	----------	-------------	----------

General information

Lampholder:	LED	Light source:	LED
Lightsource lumen output [lm]:	12479	Luminaire lumen output [lm]:	10767
Luminaire wattage [W]:	72 W	Luminous efficacy [lm/W]:	150
CRI:	80	Colour temperature [K]:	4000
Colour / Finishing:	GR-94 / Metallic grey / Textured	IP degree of protection:	IP66
Impact resistance / impact energy:	IK06 0.8J xx3	Protection class:	I
Optic:	S/EW - Symmetric Extra-Wide	Net weight [kg]:	4.12
Overall length [mm]:	630	Overall width [mm]:	185
Overall height [mm]:	77		

Mechanical features

Shape:	Rectangular	Housing material:	Aluminium
Diffuser material:	Glass		

Electrical features

Voltage type:	AC/DC	Input voltage [V AC]:	220/240
Input frequency [Hz]:	0/50/60	Power factor / COS Φ :	>0.9
Input voltage [V DC]:	168/250	Surge protection Common [kV]:	4.000000
Inrush current [A/ μ s]:	9 / 65	C10 1.5 mm ² :	27
C16 2.5 mm ² :	44	B10 1.5 mm ² :	16
B16 2.5 mm ² :	26		

Installation

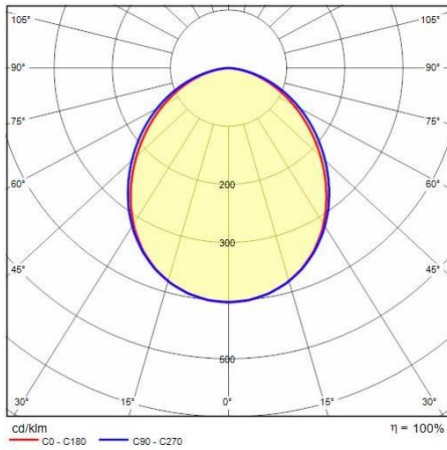
Application area:	Indoor lighting	Mounting type:	Waterproof
Min. ambient temperature [°C]:	-40	Max. ambient temperature [°C]:	40
Min. distance from lighted object [m]:	0.50		

Light features

MacAdam:	3	Lumen maintenance:	L90B10@100000h
Distribution of light emission:	Direct		

To maintain the regular updating of our products, PERFORMANCE iN LIGHTING reserves the right to make changes without prior notice. For the most up to date information we always recommend you read the latest version published on the website www.performanceinlighting.com. Delivered luminaire lumen outputs and power consumptions, including losses, are subject to a tolerance of +/- 7%, and unless otherwise stated the values apply to an ambient temperature of 25°C. Terms of warranty are available at <https://www.performanceinlighting.com/gr/company/led-warranty>

Photometric data



To maintain the regular updating of our products, PERFORMANCE IN LIGHTING reserves the right to make changes without prior notice. For the most up to date information we always recommend you read the latest version published on the website www.performanceinlighting.com. Delivered luminaire lumen outputs and power consumptions, including losses, are subject to a tolerance of +/- 7%, and unless otherwise stated the values apply to an ambient temperature of 25°C. Terms of warranty are available at <https://www.performanceinlighting.com/qr/company/led-warranty>