

TYK+ 20 ELL

Part number 3107323



Description

LED floodlight for indoor and outdoor, comprising:

- Die-cast aluminium separate housing compartments to maximise heat dissipation between electronic components and the LEDs, polyester powder coat finish ISO 9227/12944 - ISO 9223 (C5)
- Extra-clear, toughened, flat glass diffuser, silk-screened on the inside
- Glazing diffuser permanently sealed to the housing through high-temperature resistant silicone
- High-transparency polycarbonate optics
- Anti-ageing custom moulded silicone sealing gasket(s) with resilient elastic return capacity
- Tear-proof nickelled brass cable gland M20x1.5 for cables Ø 10 mm- Ø 14 mm
- Driver integral surge protection up to 6 kV (DM)
- Stainless steel locking hardware
- Stainless steel wall-mounting bracket
- Integral graduated stainless steel goniometer for precise aimings
- Built-in driver

To maintain the regular updating of our products, PERFORMANCE IN LIGHTING reserves the right to make changes without prior notice. For the most up to date information we always recommend you read the latest version published on the website www.performanceinlighting.com. Delivered luminaire lumen outputs and power consumptions, including losses, are subject to a tolerance of +/- 7%, and unless otherwise stated the values apply to an ambient temperature of 25°C. Terms of warranty are available at <https://www.performanceinlighting.com/qr/company/led-warranty>

Product data

ETIM Group:	EG000027	ETIM Class:	EC001744
-------------	----------	-------------	----------

General information

Lampholder:	LED	Light source:	LED
Lightsource lumen output [lm]:	3858	Luminaire lumen output [lm]:	2080.01
Luminaire wattage [W]:	35 W	Luminous efficacy [lm/W]:	59
CRI:	80	Colour temperature [K]:	3000
Colour / Finishing:	AN-g6 / Anthracite gray / Textured	IP degree of protection:	IP66
Impact resistance / impact energy:	IK07 2J xx5	Protection class:	II
Optic:	ELL - Elliptical	Beam angle:	35°x65°
Net weight [kg]:	4.416	Overall diameter [mm]:	234
Overall length [mm]:	234	Overall width [mm]:	275
Overall height [mm]:	114		

Mechanical features

Shape:	Round $150 \leq x \leq 300$ mm	Housing material:	Aluminium
Diffuser material:	Glass	Glow wire test [°C]:	650 °C
Frontal exposed area [m ²]:	0.04	Lateral exposed area [m ²]:	0.03
Top exposed area [m ²]:	0.03		

Electrical features

Voltage type:	AC/DC	Input voltage [V AC]:	220/240
Input frequency [Hz]:	0/50/60	Power factor / COS Φ :	>0.9
Input voltage [V DC]:	170/264	Surge protection Common [kV]:	6.000000
Surge protection Differential [kV]:	6.000000	Inrush current [A/ μ s]:	42 / 238
C10 1.5 mm ² :	10	C16 2.5 mm ² :	17
B10 1.5 mm ² :	6	B16 2.5 mm ² :	10

Installation

Application area:	Outdoor lighting	Mounting type:	Architectural floodlight
Min. ambient temperature [°C]:	-40	Max. ambient temperature [°C]:	50
Glass temperature [°C]:	50		

Light features

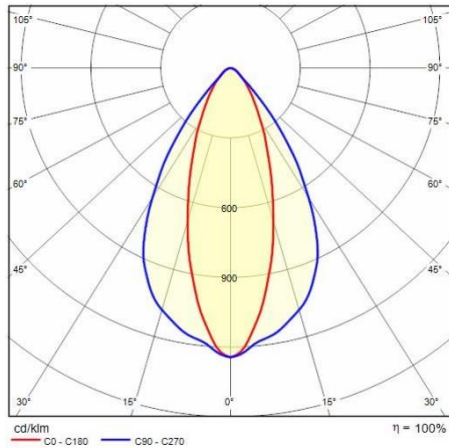
MacAdam:	3	Lumen maintenance:	L90B10@94000h
Distribution of light emission:	Direct	Luminous Intensity Class:	G'6

To maintain the regular updating of our products, PERFORMANCE IN LIGHTING reserves the right to make changes without prior notice. For the most up to date information we always recommend you read the latest version published on the website www.performanceinlighting.com. Delivered luminaire lumen outputs and power consumptions, including losses, are subject to a tolerance of +/- 7%, and unless otherwise stated the values apply to an ambient temperature of 25°C. Terms of warranty are available at <https://www.performanceinlighting.com/qr/company/led-warranty>

Zero light pollution (ULR = 0%):

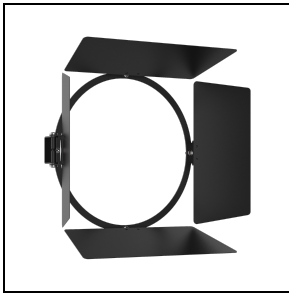
To maintain the regular updating of our products, PERFORMANCE IN LIGHTING reserves the right to make changes without prior notice. For the most up to date information we always recommend you read the latest version published on the website www.performanceinlighting.com. Delivered luminaire lumen outputs and power consumptions, including losses, are subject to a tolerance of +/- 7%, and unless otherwise stated the values apply to an ambient temperature of 25°C. Terms of warranty are available at <https://www.performanceinlighting.com/qr/company/led-warranty>

Photometric data



Optional accessories

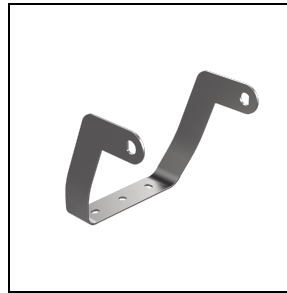
TYK+ 20



3112970

Barndoors painted

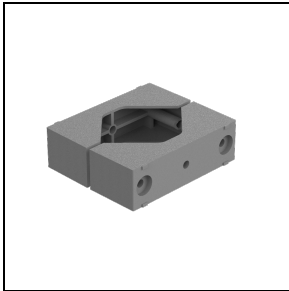
■ BK-81 / Black



3108557

Extra rotation bracket +55°/-90°

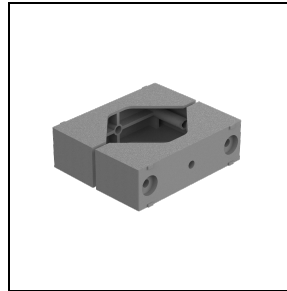
■ INOX / Stainless steel



14029094

Gliding support made of painted aluminium for the installation on 60-76 mm Ø posts. 1 luminaire

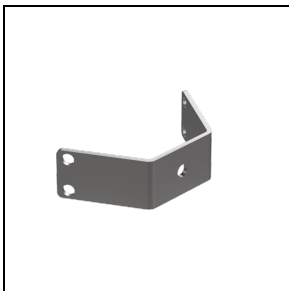
■ GR-94 / Metallic grey



14047194

Gliding support made of painted aluminium for the installation on 60-76 mm Ø posts. 2 opposed luminaires

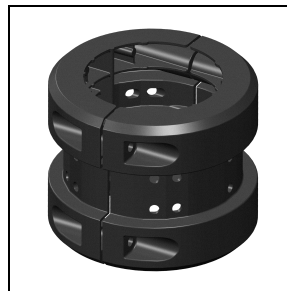
■ GR-94 / Metallic grey



3107473

Two-axis rotation bracket for gliding support

■ INOX / Stainless steel



14099696

Gliding support made of painted aluminium for the installation on Ø 90 mm posts

■ AN-96 / Anthracite gray



14099896

Gliding support made of painted aluminium for the installation on Ø 60 mm posts

■ AN-96 / Anthracite gray