

TYK+ 20 C/M

Part number 3107347



Description

LED floodlight for indoor and outdoor, comprising:

- Die-cast aluminium separate housing compartments to maximise heat dissipation between electronic components and the LEDs, polyester powder coat finish ISO 9227/12944 - ISO 9223 (C5)
- Extra-clear, toughened, flat glass diffuser, silk-screened on the inside
- Glazing diffuser permanently sealed to the housing through high-temperature resistant silicone
- High-transparency polycarbonate optics
- Anti-ageing custom moulded silicone sealing gasket(s) with resilient elastic return capacity
- Tear-proof nickelled brass cable gland M20x1.5 for cables Ø 10 mm- Ø 14 mm
- Driver integral surge protection up to 6 kV (DM)
- Stainless steel locking hardware
- Stainless steel wall-mounting bracket
- Integral graduated stainless steel goniometer for precise aimings
- Built-in driver

Product data

| | | | |
|-------------|----------|-------------|----------|
| ETIM Group: | EG000027 | ETIM Class: | EC001744 |
|-------------|----------|-------------|----------|

General information

| | | | |
|------------------------------------|------------------------------------|------------------------------|---------|
| Lampholder: | LED | Light source: | LED |
| Lightsource lumen output [lm]: | 5440 | Luminaire lumen output [lm]: | 4660.49 |
| Luminaire wattage [W]: | 50 W | Luminous efficacy [lm/W]: | 93 |
| CRI: | 80 | Colour temperature [K]: | 3000 |
| Colour / Finishing: | AN-g6 / Anthracite gray / Textured | IP degree of protection: | IP66 |
| Impact resistance / impact energy: | IK07 2J xx5 | Protection class: | II |
| Optic: | C/M - Circular Medium | Beam angle: | 34° |
| Net weight [kg]: | 4.416 | Overall diameter [mm]: | 234 |
| Overall length [mm]: | 234 | Overall width [mm]: | 275 |
| Overall height [mm]: | 114 | | |

Mechanical features

| | | | |
|---|--------------------------------|---|-----------|
| Shape: | Round $150 \leq x \leq 300$ mm | Housing material: | Aluminium |
| Diffuser material: | Glass | Glow wire test [°C]: | 650 °C |
| Frontal exposed area [m ²]: | 0.04 | Lateral exposed area [m ²]: | 0.03 |
| Top exposed area [m ²]: | 0.03 | | |

Electrical features

| | | | |
|---------------------------------------|----------|---------------------------------|----------|
| Voltage type: | AC/DC | Input voltage [V AC]: | 220/240 |
| Input frequency [Hz]: | 0/50/60 | Power factor / COS Φ : | >0.9 |
| Input voltage [V DC]: | 170/264 | Surge protection Common [kV]: | 6.000000 |
| Surge protection Differential [kV]: | 6.000000 | Inrush current [A/ μ s]: | 42 / 238 |
| C10 1.5 mm ² : | 10 | C16 2.5 mm ² : | 17 |
| B10 1.5 mm ² : | 6 | B16 2.5 mm ² : | 10 |

Installation

| | | | |
|--------------------------------|------------------|--------------------------------|--------------------------|
| Application area: | Outdoor lighting | Mounting type: | Architectural floodlight |
| Min. ambient temperature [°C]: | -40 | Max. ambient temperature [°C]: | 50 |
| Glass temperature [°C]: | 58 | | |

Light features

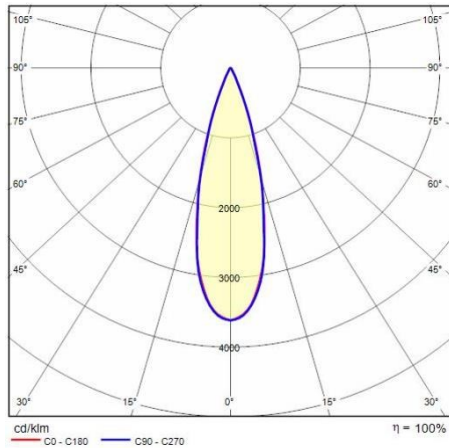
| | | | |
|---------------------------------|--------|---------------------------|---------------|
| MacAdam: | 3 | Lumen maintenance: | L90B10@75000h |
| Distribution of light emission: | Direct | Luminous Intensity Class: | G'6 |

To maintain the regular updating of our products, PERFORMANCE IN LIGHTING reserves the right to make changes without prior notice. For the most up to date information we always recommend you read the latest version published on the website www.performanceinlighting.com. Delivered luminaire lumen outputs and power consumptions, including losses, are subject to a tolerance of +/- 7%, and unless otherwise stated the values apply to an ambient temperature of 25°C. Terms of warranty are available at <https://www.performanceinlighting.com/qr/company/led-warranty>

Zero light pollution (ULR = 0%):

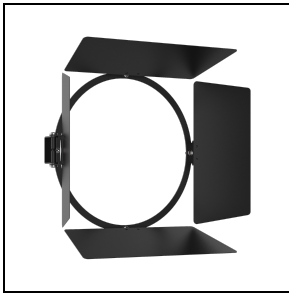
To maintain the regular updating of our products, PERFORMANCE IN LIGHTING reserves the right to make changes without prior notice. For the most up to date information we always recommend you read the latest version published on the website www.performanceinlighting.com. Delivered luminaire lumen outputs and power consumptions, including losses, are subject to a tolerance of +/- 7%, and unless otherwise stated the values apply to an ambient temperature of 25°C. Terms of warranty are available at <https://www.performanceinlighting.com/qr/company/led-warranty>

Photometric data



Optional accessories

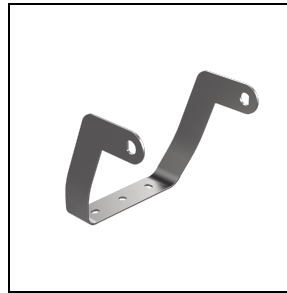
TYK+ 20



3112970

Barndoors painted

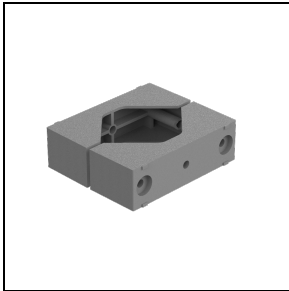
■ BK-81 / Black



3108557

Extra rotation bracket +55°/-90°

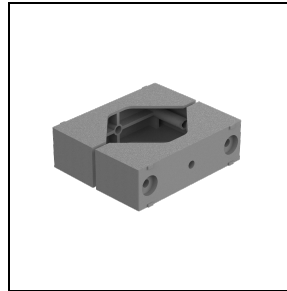
■ INOX / Stainless steel



14029094

Gliding support made of painted aluminium for the installation on 60-76 mm Ø posts. 1 luminaire

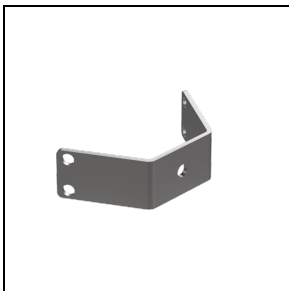
■ GR-94 / Metallic grey



14047194

Gliding support made of painted aluminium for the installation on 60-76 mm Ø posts. 2 opposed luminaires

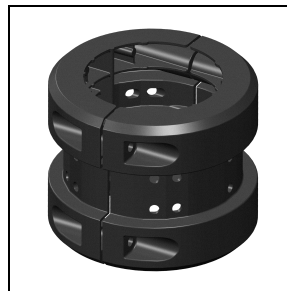
■ GR-94 / Metallic grey



3107473

Two-axis rotation bracket for gliding support

■ INOX / Stainless steel



14099696

Gliding support made of painted aluminium for the installation on Ø 90 mm posts

■ AN-96 / Anthracite gray



14099896

Gliding support made of painted aluminium for the installation on Ø 60 mm posts

■ AN-96 / Anthracite gray