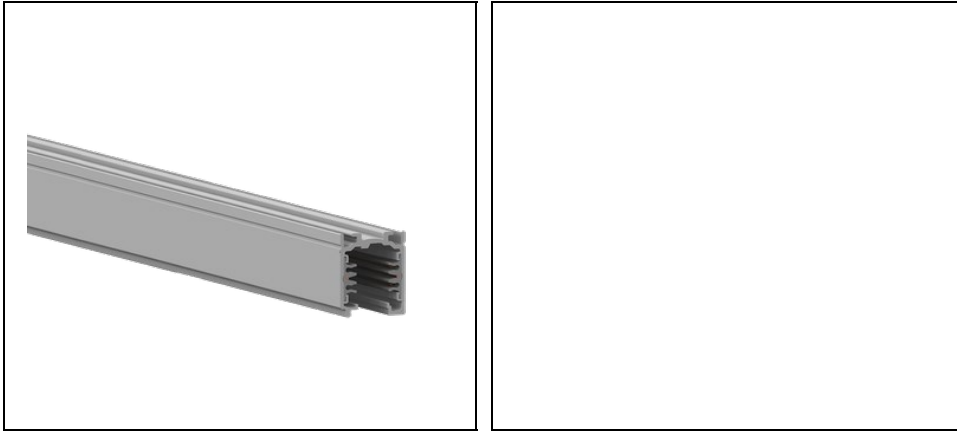


# OTR TRACKS RAILS STANDARD

Part number 310817



## Description

---

The track system with 3 switches is a complete installation system designed for stores, hypermarkets, public facilities, museums

- All designs can be easily implemented, and assembly is facilitated by the use of tracks and standard accessories
- Designed for exposed, recessed or suspension installation, and the luminaires can be easily moved, changed or modified
- The indication "earthing conductor on the right, left, inside or outside" for power supply units, corner and T- derivations are based on the earthing conductor's position on the track. The position of the earthing conductor on the track depends on the visual direction. The visual direction follows the operating direction of the system on the cross cup of the track that opens downwards
- Compatible with 3F "standard" adaptors that do not use DIM
- The OTR binary system is a mixed three-phase system with two additional conductors for the management of any signal (e.g. DIM 1-10 V, DALI, DMX, LON, EIB, etc)

---

To maintain the regular updating of our products, PERFORMANCE IN LIGHTING reserves the right to make changes without prior notice. For the most up to date information we always recommend you read the latest version published on the website [www.performanceinlighting.com](http://www.performanceinlighting.com). Delivered luminaire lumen outputs and power consumptions, including losses, are subject to a tolerance of +/- 7%, and unless otherwise stated the values apply to an ambient temperature of 25°C. Terms of warranty are available at <https://www.performanceinlighting.com/qr/company/led-warranty>

## Product data

---

ETIM Group:	EG000030	ETIM Class:	EC000101
-------------	----------	-------------	----------

---

## General information

---

Light source:		Colour / Finishing:	GR-94 / Metallic grey / Textured
Optic:	-	Net weight [kg]:	1.06
Overall length [mm]:	1000	Overall width [mm]:	31
Overall height [mm]:	38		

---

## Installation

---

Application area:	Indoor lighting	Mounting type:	Tracklight
Min. ambient temperature [°C]:	0		

---

## Light features

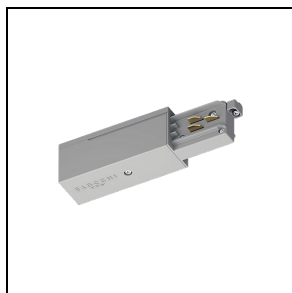
---

To maintain the regular updating of our products, PERFORMANCE IN LIGHTING reserves the right to make changes without prior notice. For the most up to date information we always recommend you read the latest version published on the website [www.performanceinlighting.com](http://www.performanceinlighting.com). Delivered luminaire lumen outputs and power consumptions, including losses, are subject to a tolerance of +/- 7%, and unless otherwise stated the values apply to an ambient temperature of 25°C. Terms of warranty are available at <https://www.performanceinlighting.com/qr/company/led-warranty>

## Mandatory accessories

---

### 9001 - OTR END - FEED RIGHT

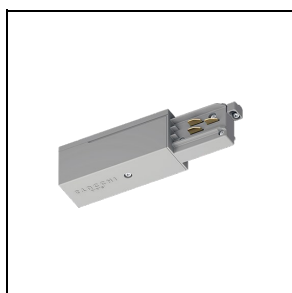


**310755**

Feeder - L - right mechanical wrench  
/ left grounding

■ GR-RAL7035 / Grey RAL7035

### 9002 - OTR END - FEED LEFT

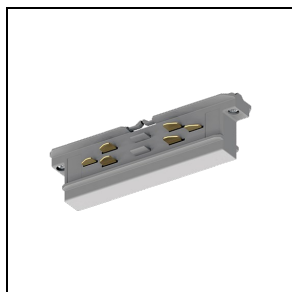


**310756**

Feeder - R - right mechanical wrench  
/ right grounding

■ GR-RAL7035 / Grey RAL7035

### 9003 - OTR TK CONNECTOR

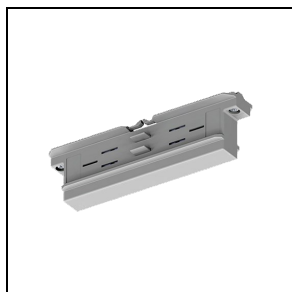


**310712**

Through joint

■ GR-RAL7035 / Grey RAL7035

### 9003-M - OTR TK CONNECTOR ONLY MECHA



**310666**

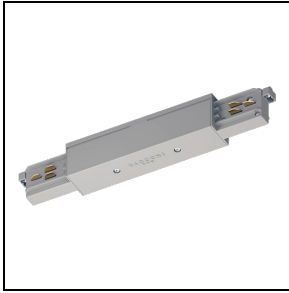
Insulating connection

■ GR-RAL7035 / Grey RAL7035

### 9010 - OTR MIDDLE-FEED

---

To maintain the regular updating of our products, PERFORMANCE IN LIGHTING reserves the right to make changes without prior notice. For the most up to date information we always recommend you read the latest version published on the website [www.performanceinlighting.com](http://www.performanceinlighting.com). Delivered luminaire lumen outputs and power consumptions, including losses, are subject to a tolerance of +/- 7%, and unless otherwise stated the values apply to an ambient temperature of 25°C. Terms of warranty are available at <https://www.performanceinlighting.com/qr/company/led-warranty>

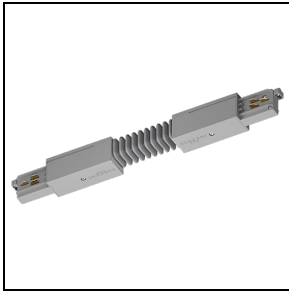


**310821**

Direct joint

■ GR-RAL7035 / Grey RAL7035

9018 - OTR FLEXIBLE CORNER

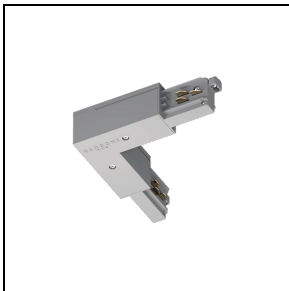


**310848**

Flexible joint

■ GR-RAL7035 / Grey RAL7035

9011 - OTR L - FEED INT

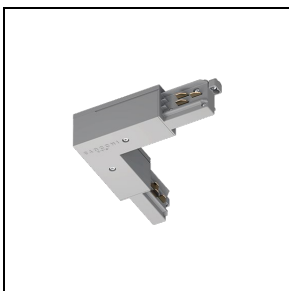


**310825**

L-shaped joint - internal mechanical  
wrench / external grounding

■ GR-RAL7035 / Grey RAL7035

9012 - OTR L - FEED EXT

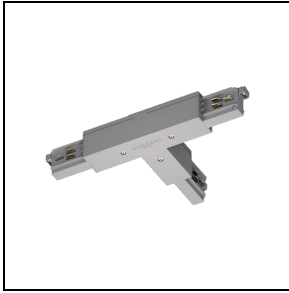


**310826**

L-shaped joint - external mechanical  
wrench / internal grounding

■ GR-RAL7035 / Grey RAL7035

9013 - OTR T - FEED EXT LEFT

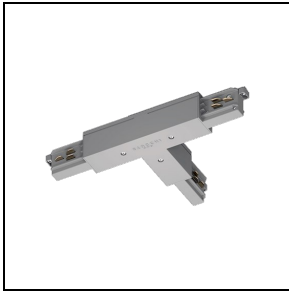


**310854**

T-shaped joint - left mechanical wrench / right grounding

■ GR-RAL7035 / Grey RAL7035

9014 - OTR T - FEED EXT RIGHT



**310855**

T-shaped joint - right external mechanical wrench / left internal grounding

■ GR-RAL7035 / Grey RAL7035

9015 - OTR T - FEED INT LEFT



**310856**

T-shaped joint - left internal mechanical wrench / right external grounding

■ GR-RAL7035 / Grey RAL7035

9016 - OTR T - FEED INT RIGHT

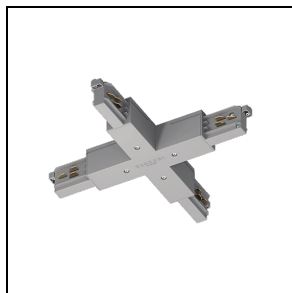


**310857**

T-shaped joint - right internal mechanical wrench / left external grounding

■ GR-RAL7035 / Grey RAL7035

9017 - OTR X - FEED

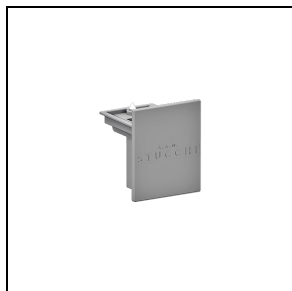


**310875**

X-shaped joint

■ GR-RAL7035 / Grey RAL7035

9004



**310615**

Closing cap with locking screw

■ GR-RAL7035 / Grey RAL7035

9000/H

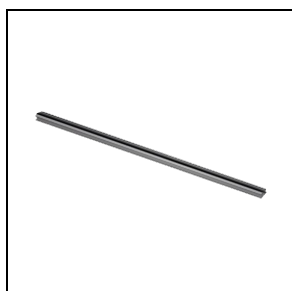


**310629**

Suspension hook

■ GR-RAL7035 / Grey RAL7035

S-9000/GP



**310636**

Additional protective sheath (1 m)

■ GR-RAL7035 / Grey RAL7035

9000/TP

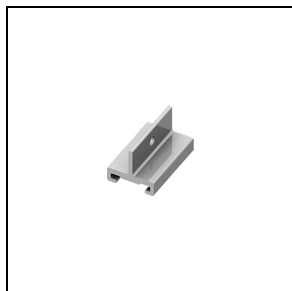


**310621**

Additional protective cap for track slots

■ GR-RAL7035 / Grey RAL7035

S-9000/113



**310645**

Short suspension clamp (40 mm)

■ GR-RAL7035 / Grey RAL7035

S-9000/123

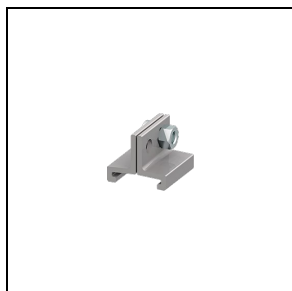


**310715**

Long suspension clamp for use with  
through joint (100 mm)

■ GR-RAL7035 / Grey RAL7035

S-9000/313

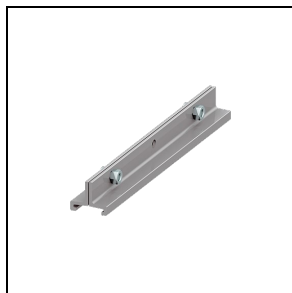


**310646**

Short suspension clamp (25 mm)

■ GR-RAL7035 / Grey RAL7035

S-9000/333

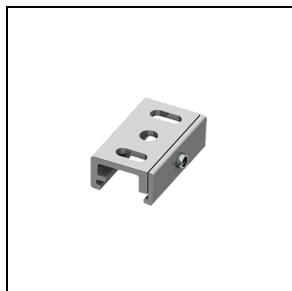


**310716**

Long suspension clamp (180 mm)

■ GR-RAL7035 / Grey RAL7035

S-9000/131

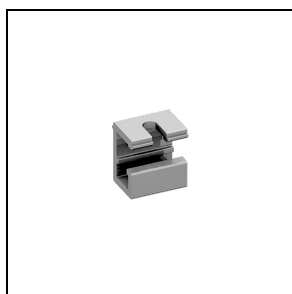


**310682**

Ceiling-mounting clamp

■ GR-RAL7035 / Grey RAL7035

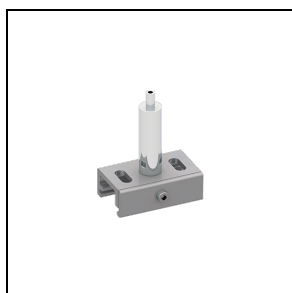
S-9000/132



**310642**

Ceiling-mounting clamp for  
suspensions

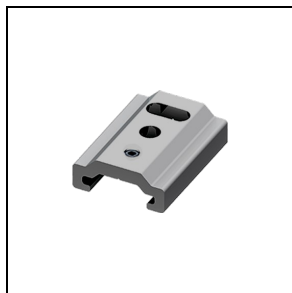
9000/231



**310740**

Clamp with automatic tensioner

9000/312-LA



**311047**

Short suspension clamp with hole for automatic tensioner (35 mm)

■ GR-RAL7035 / Grey RAL7035

9000/312-SV

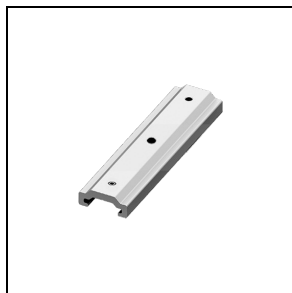


**311050**

Short suspension clamp with hole for cable with ball terminal (35 mm)

■ GR-RAL7035 / Grey RAL7035

9000/322-LA

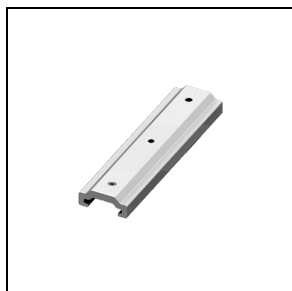


**311053**

Medium suspension clamp with hole for automatic tensioner (100 mm)

■ GR-RAL7035 / Grey RAL7035

9000/322-SV

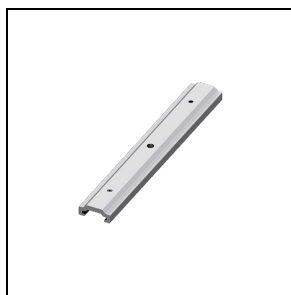


**311056**

Medium suspension clamp with hole for cable with ball terminal (100 mm)

■ GR-RAL7035 / Grey RAL7035

9000/332-LA

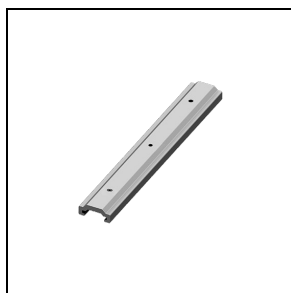


**311076**

Long suspension clamp with hole for automatic tensioner for use with through joint (180 mm)

■ GR-RAL7035 / Grey RAL7035

9000/332-SV

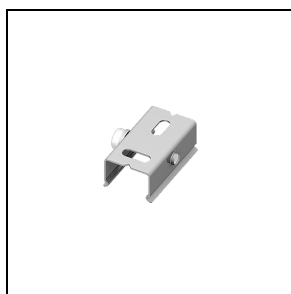


**310739**

Long suspension clamp with hole for cable with ball terminal for use with through joint (180 mm)

■ GR-RAL7035 / Grey RAL7035

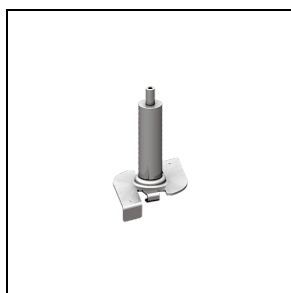
S-9000/111



**310625**

Steel clip for mounting on ceiling

S-9000/114-T



**310743**

Clip with automatic tensioner for quick mounting

■ GR-RAL7035 / Grey RAL7035

S-9000/115

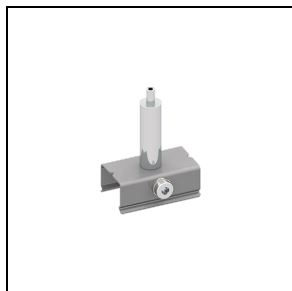


**310650**

Clip for quick mounting

■ GR-RAL7035 / Grey RAL7035

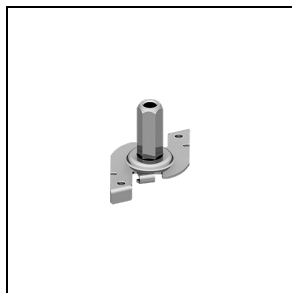
S-9000/116



**310699**

Clamp with automatic tensioner

S-9000/118

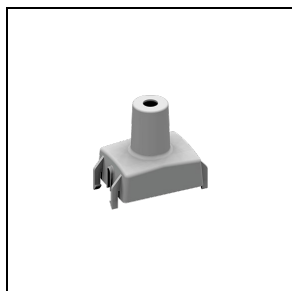


**310695**

Clip for quick mounting with M6 tensioner

■ GR-RAL7035 / Grey RAL7035

S-9000/5



**310612**

Plastic cover for clips and clamps

■ GR-RAL7035 / Grey RAL7035

9000/211



**310634**  
Steel cable (Ø 1.5 mm - 1.5 m length)



**310643**  
Steel cable (Ø 1.5 mm - 2 m length)



**310657**  
Steel cable (Ø 1.5 mm - 3 m length)



**310718**  
Steel cable (Ø 1.5 mm - 5 m length)

9000/211-S



**310647**  
Steel cable (Ø 1.5 mm - 1.5 m length)  
with ball terminal



**310658**  
Steel cable (Ø 1.5 mm - 2 m length)  
with ball terminal



**310668**  
Steel cable (Ø 1.5 mm - 3 m length)  
with ball terminal



**310726**  
Steel cable (Ø 1.5 mm - 5 m length)  
with ball terminal



**310741**  
Steel cable (Ø 1.5 mm - 6 m length)  
with ball terminal

To maintain the regular updating of our products, PERFORMANCE IN LIGHTING reserves the right to make changes without prior notice. For the most up to date information we always recommend you read the latest version published on the website [www.performanceinlighting.com](http://www.performanceinlighting.com). Delivered luminaire lumen outputs and power consumptions, including losses, are subject to a tolerance of +/- 7%, and unless otherwise stated the values apply to an ambient temperature of 25°C. Terms of warranty are available at <https://www.performanceinlighting.com/qr/company/led-warranty>

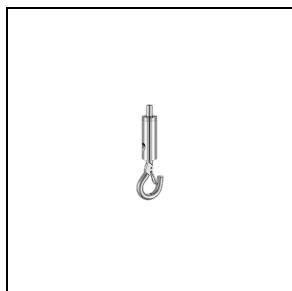
9000/218



**310665**

M5 automatic tensioner with lateral hole, in chromed brass

9000/213



**310671**

Automatic hook tensioner, in nickel-plated brass

9000/214



**310693**

Automatic locking tensioner, in nickel-plated brass

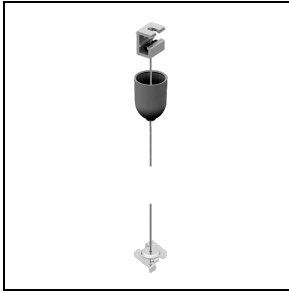
9000/215



**310619**

Screw tensioner, in nickel-plated brass

9000-KIT2 - 1,5 m

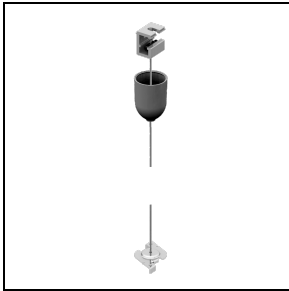


**310777**

Bracket for mounting on ceiling, screw tensioner, plastic ceiling rose, Ø 1.5 mm 1.5 m-long steel cable with ball end, clip for quick mounting

■ GR-RAL7035 / Grey RAL7035

9000-KIT2 - 3 m

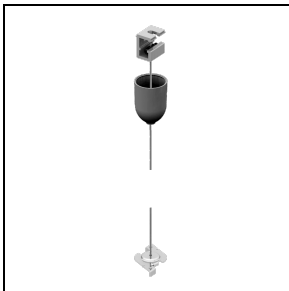


**310786**

Ceiling-mounting bracket, screw tensioner, plastic ceiling rose, Ø 1.5 mm 3 m-long steel cable with ball end, clip for quick mounting

■ GR-RAL7035 / Grey RAL7035

9000-KIT2 - 5 m

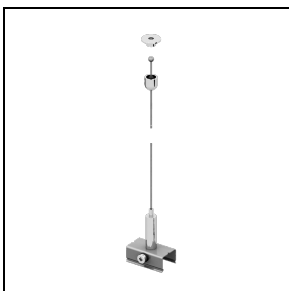


**310812**

Bracket for mounting on ceiling, screw tensioner, plastic ceiling rose, Ø 1.5 mm 5 m-long steel cable with ball end, clip for quick mounting

■ GR-RAL7035 / Grey RAL7035

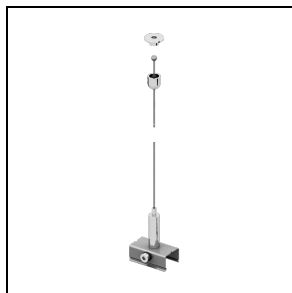
9000-KIT4 - 1,5 m



**310801**

Metal ball ceiling rose with hole, Ø 1.5 mm 1.5 m-long steel cable with ball end, with automatic tensioner

9000-KIT4 - 3 m



**310805**

Metal ball ceiling rose with hole, Ø 1.5 mm 3 m-long steel cable with ball end, with automatic tensioner

9000-KIT4 - 5 m



**310831**

Metal ball ceiling rose with hole, Ø 1.5 mm 5 m-long steel cable with ball end, with automatic tensioner

9000-KIT6 - 1,5 m



**310780**

Screw tensioner, plastic ceiling rose, Ø 1.5 mm 1.5 m-long steel cable with ball end, bracket with milled hole and automatic tensioner

■ GR-RAL7035 / Grey RAL7035

9000-KIT6 - 3 m

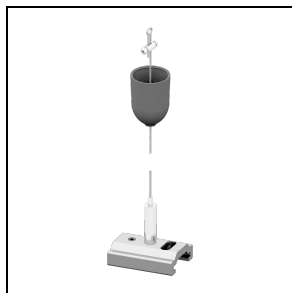


**310793**

Screw tensioner, plastic ceiling rose, Ø 1.5 mm 3 m-long steel cable with ball end, bracket with milled hole and automatic tensioner

■ GR-RAL7035 / Grey RAL7035

9000-KIT6 - 5 m

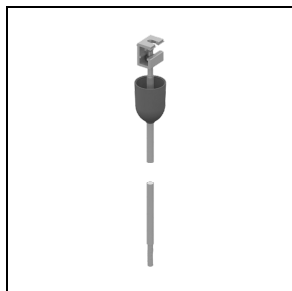


**310809**

Screw tensioner, plastic ceiling rose, Ø 1.5 mm 5 m-long steel cable with ball end, bracket with milled hole and automatic tensioner

■ GR-RAL7035 / Grey RAL7035

9000-P3-KIT4 - 1 m

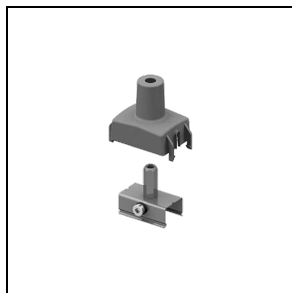


**310769**

Bracket for mounting on ceiling, M6 nut, plastic ceiling rose, M6 1 m-long threaded bar with cover sheath

■ GR-RAL7035 / Grey RAL7035

9000-P2

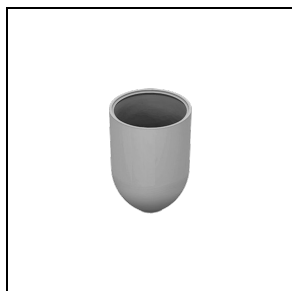


**310735**

Bracket with M6 tensioner and plastic cover

■ GR-RAL7035 / Grey RAL7035

9000/3

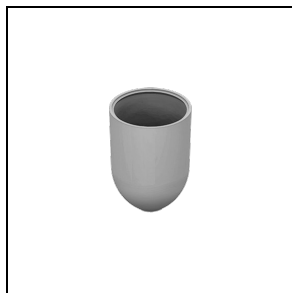


**310602**

Plastic ceiling rose for Ø 1.5 mm steel cable

■ GR-RAL7035 / Grey RAL7035

9000/4



**310605**

Plastic ceiling rose for threaded bar in M6 steel

■ GR-RAL7035 / Grey RAL7035

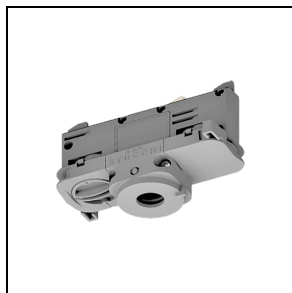
9000/216



**310644**

Metal ball ceiling rose with hole

9009

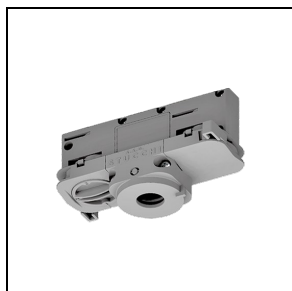


**310750**

6-Conductor DALI adapter (3-phase + control system) (maximum load 100 N = 10.2 kg)

■ GR-RAL7035 / Grey RAL7035

9009-4



**310722**

4-Conductor adapter (3-phase) (maximum load 100 N = 10.2 kg)

■ GR-RAL7035 / Grey RAL7035

S-9209



**310760**

Asymmetric 6-conductor Dali adapter (3-phase + control system) (maximum load 100 N = 10.2 kg)

■ GR-RAL7035 / Grey RAL7035

9209-4

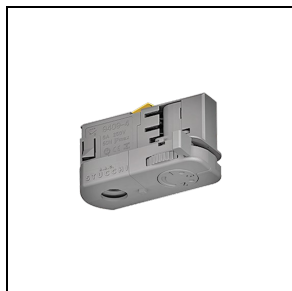


**310733**

Asymmetric 4-conductor adapter (3-phase) (maximum load 100 N = 10.2 kg)

■ GR-RAL7035 / Grey RAL7035

9409-4

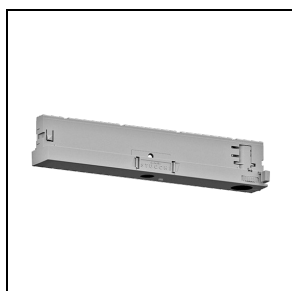


**311059**

Asymmetric 4-conductor adapter (3-phase) (maximum load 50 N = 5.1 kg)

■ GR-RAL7035 / Grey RAL7035

9409-4-DRI

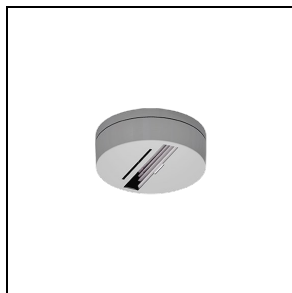


**311062**

Compact 4-conductor adapter with integrated driver (3-phase) (100-850 mA - max. 40 VDC)

■ GR-RAL7035 / Grey RAL7035

9000/BP-D



**310844**

Adapter ceiling-mounting base  
(without using the track)

■ GR-RAL7035 / Grey RAL7035

g000/BR

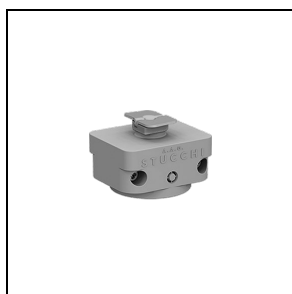


**310829**

Adapter suspended ceiling-mounting  
base (without using the track)

■ GR-RAL7035 / Grey RAL7035

S-g000/M

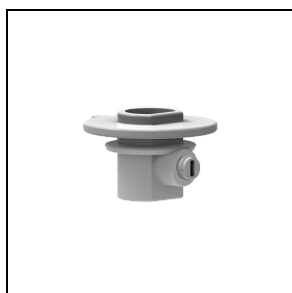


**310677**

Mechanical adapter

■ GR-RAL7035 / Grey RAL7035

S-g000/BC

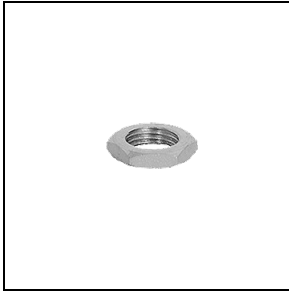


**310623**

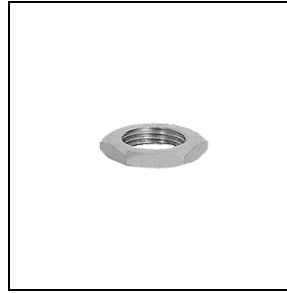
External cable clamp with plastic grub  
screw

■ GR-RAL7035 / Grey RAL7035

S-g000/D



**310609**  
Nut for M10 connector



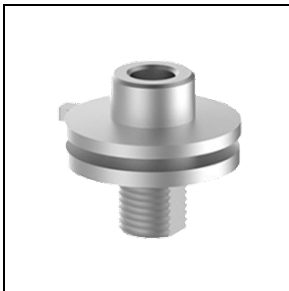
**310610**  
Nut for M13 connector

g009/IP40

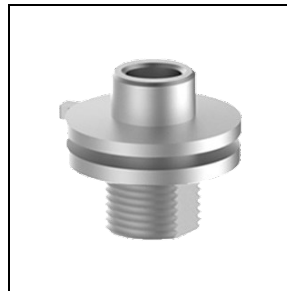


**310590**  
IP40 Housing for symmetrical adapter  
■ GR-RAL7035 / Grey RAL7035

S-g000

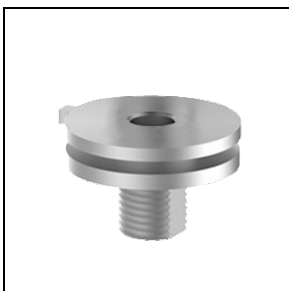


**310638**  
Aluminium M10 connector for adapter



**310639**  
Aluminium M13 connector for adapter

S-g000/SC



**310662**  
Aluminium M10 connector without collar for adapter



**310663**  
Aluminium M13 connector without collar for adapter

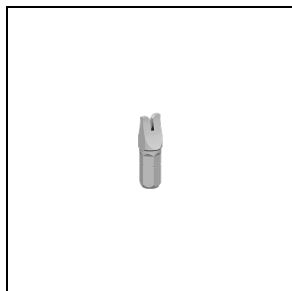
S-g000/FI



**310648**

Aluminium M10 connector with internal thread for adapter

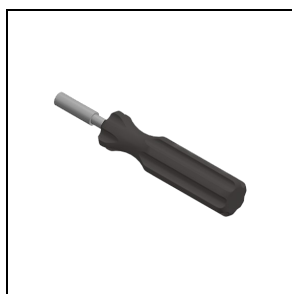
9009/T-INS



**310862**

Adapter wiring insert

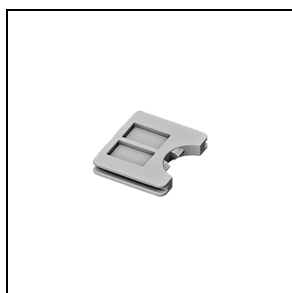
9009/T-HAN



**310846**

Handle for adapter wiring insert

9009/10



**310584**

Internal cable clamp for symmetrical adapter

■ GR-RAL7035 / Grey RAL7035

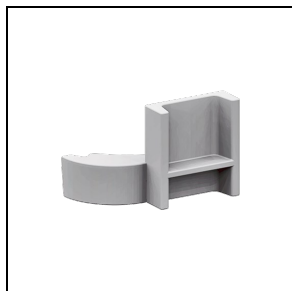
9009/51



**310656**

Aluminium ring with block grub screw to prevent twisting of adapter connectors

9209/IP40

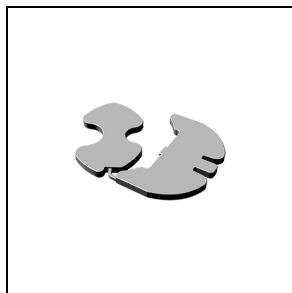


**310591**

IP40 Housing for asymmetrical adapter

■ GR-RAL7035 / Grey RAL7035

9209/20

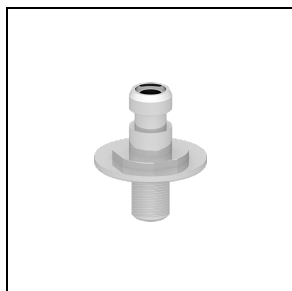


**310585**

Internal cable clamp for asymmetrical adapter

■ GR-RAL7035 / Grey RAL7035

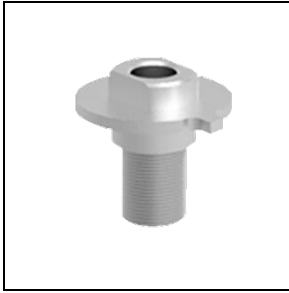
9909/M10



**310731**

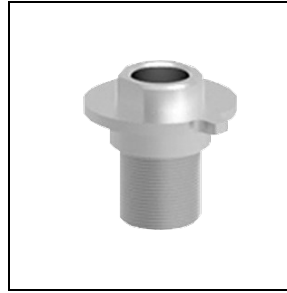
M10 Terminal for retractable adapter

9209-BD



**310669**

Aluminium M10 connector for LED driver box



**310670**

Aluminium M13 connector for LED driver box