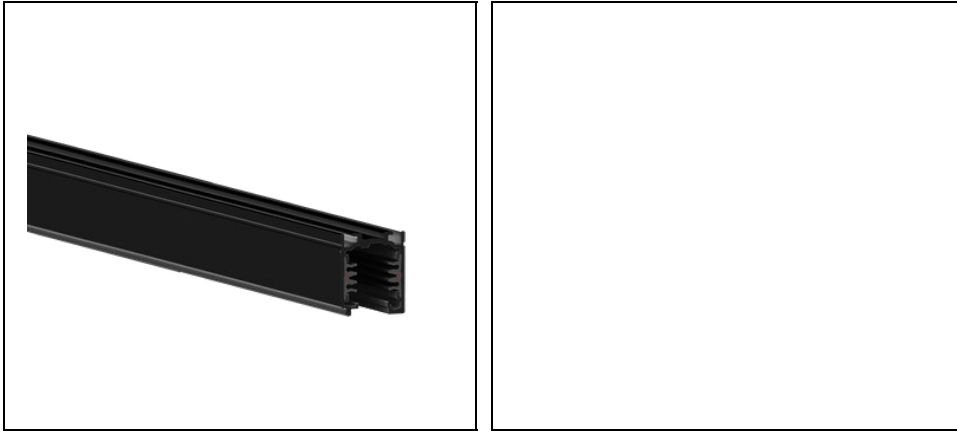


# OTR TRACKS RAILS STANDARD

Part number 310820



## Description

---

The track system with 3 switches is a complete installation system designed for stores, hypermarkets, public facilities, museums

- All designs can be easily implemented, and assembly is facilitated by the use of tracks and standard accessories
- Designed for exposed, recessed or suspension installation, and the luminaires can be easily moved, changed or modified
- The indication "earthing conductor on the right, left, inside or outside" for power supply units, corner and T- derivations are based on the earthing conductor's position on the track. The position of the earthing conductor on the track depends on the visual direction. The visual direction follows the operating direction of the system on the cross cup of the track that opens downwards
- Compatible with 3F "standard" adaptors that do not use DIM
- The OTR binary system is a mixed three-phase system with two additional conductors for the management of any signal (e.g. DIM 1-10 V, DALI, DMX, LON, EIB, etc)

To maintain the regular updating of our products, PERFORMANCE IN LIGHTING reserves the right to make changes without prior notice. For the most up to date information we always recommend you read the latest version published on the website [www.performanceinlighting.com](http://www.performanceinlighting.com). Delivered luminaire lumen outputs and power consumptions, including losses, are subject to a tolerance of +/- 7%, and unless otherwise stated the values apply to an ambient temperature of 25°C. Terms of warranty are available at <https://www.performanceinlighting.com/qr/company/led-warranty>

## Product data

---

ETIM Group:	EG000030	ETIM Class:	EC000101
-------------	----------	-------------	----------

---

## General information

---

Light source:		Colour / Finishing:	BK-81 / Black / Textured
Optic:	-	Net weight [kg]:	1.06
Overall length [mm]:	1000	Overall width [mm]:	31
Overall height [mm]:	38		

---

## Installation

---

Application area:	Indoor lighting	Mounting type:	Tracklight
Min. ambient temperature [°C]:	0		

---

## Light features

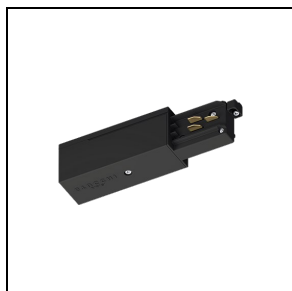
---

To maintain the regular updating of our products, PERFORMANCE IN LIGHTING reserves the right to make changes without prior notice. For the most up to date information we always recommend you read the latest version published on the website [www.performanceinlighting.com](http://www.performanceinlighting.com). Delivered luminaire lumen outputs and power consumptions, including losses, are subject to a tolerance of +/- 7%, and unless otherwise stated the values apply to an ambient temperature of 25°C. Terms of warranty are available at <https://www.performanceinlighting.com/qr/company/led-warranty>

## Mandatory accessories

---

### 9001 - OTR END - FEED RIGHT

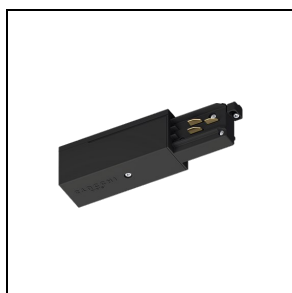


**310752**

Feeder - L - right mechanical wrench  
/ left grounding

■ BK-RAL9005 / Black RAL9005

### 9002 - OTR END - FEED LEFT



**310753**

Feeder - R - right mechanical wrench  
/ right grounding

■ BK-RAL9005 / Black RAL9005

### 9003 - OTR TK CONNECTOR



**310711**

Through joint

■ BK-RAL9005 / Black RAL9005

### 9003-M - OTR TK CONNECTOR ONLY MECHA

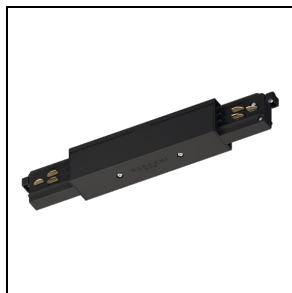


**310664**

Insulating connection

■ BK-RAL9005 / Black RAL9005

### 9010 - OTR MIDDLE-FEED



**310818**

Direct joint

■ BK-RAL9005 / Black RAL9005

#### 9018 - OTR FLEXIBLE CORNER



**310847**

Flexible joint

■ BK-RAL9005 / Black RAL9005

#### 9011 - OTR L - FEED INT



**310823**

L-shaped joint - internal mechanical  
wrench / external grounding

■ BK-RAL9005 / Black RAL9005

#### 9012 - OTR L - FEED EXT



**310824**

L-shaped joint - external mechanical  
wrench / internal grounding

■ BK-RAL9005 / Black RAL9005

#### 9013 - OTR T - FEED EXT LEFT



**310850**

T-shaped joint - left mechanical wrench / right grounding

■ BK-RAL9005 / Black RAL9005

9014 - OTR T - FEED EXT RIGHT



**310851**

T-shaped joint - right external mechanical wrench / left internal grounding

■ BK-RAL9005 / Black RAL9005

9015 - OTR T - FEED INT LEFT



**310852**

T-shaped joint - left internal mechanical wrench / right external grounding

■ BK-RAL9005 / Black RAL9005

9016 - OTR T - FEED INT RIGHT

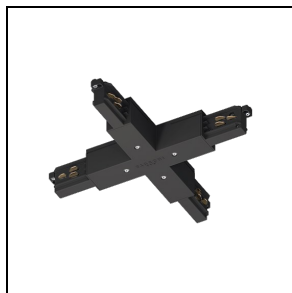


**310853**

T-shaped joint - right internal mechanical wrench / left external grounding

■ BK-RAL9005 / Black RAL9005

9017 - OTR X - FEED

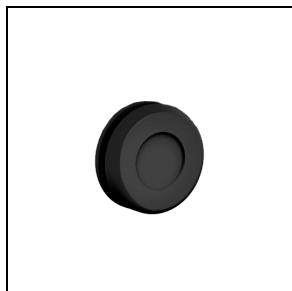


**310873**

X-shaped joint

■ BK-RAL9005 / Black RAL9005

9001 /115



**310580**

Gasket for feeder

■ BK-RAL9005 / Black RAL9005

9004



**310614**

Closing cap with locking screw

■ BK-RAL9005 / Black RAL9005

9000/H

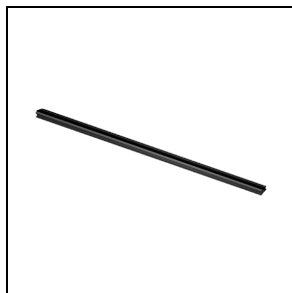


**310628**

Suspension hook

■ BK-RAL9005 / Black RAL9005

S-9000/GP

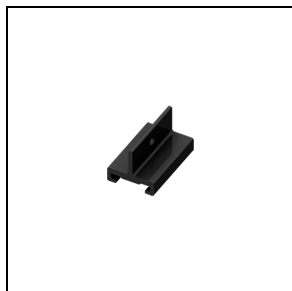


**310635**

Additional protective sheath (1 m)

■ BK-RAL9005 / Black RAL9005

S-9000/113



**310652**

Short suspension clamp (40 mm)

■ BK-RAL9005 / Black RAL9005

S-9000/123

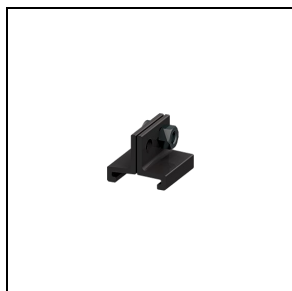


**310727**

Long suspension clamp for use with through joint (100 mm)

■ BK-RAL9005 / Black RAL9005

S-9000/313

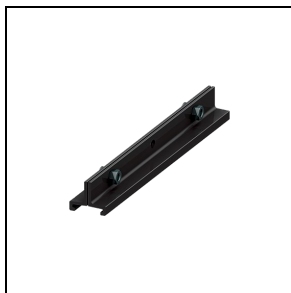


**310654**

Short suspension clamp (25 mm)

■ BK-RAL9005 / Black RAL9005

S-9000/333

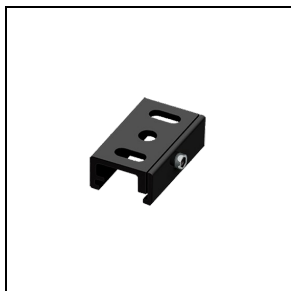


**310729**

Long suspension clamp (180 mm)

■ BK-RAL9005 / Black RAL9005

S-9000/131

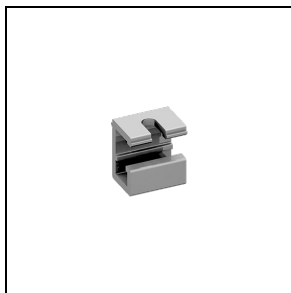


**310697**

Ceiling-mounting clamp

■ BK-RAL9005 / Black RAL9005

S-9000/132



**310642**

Ceiling-mounting clamp for  
suspensions

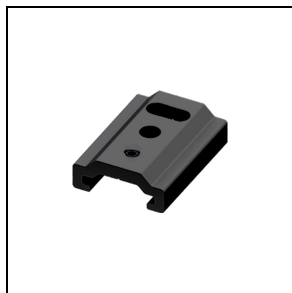
9000/231



**310740**

Clamp with automatic tensioner

9000/312-LA

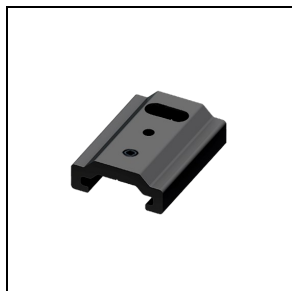


**311046**

Short suspension clamp with hole for automatic tensioner (35 mm)

■ BK-RAL9005 / Black RAL9005

9000/312-SV

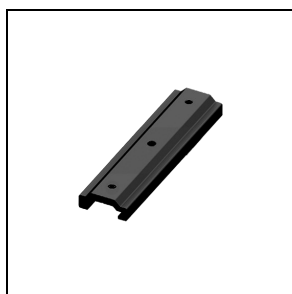


**311049**

Short suspension clamp with hole for cable with ball terminal (35 mm)

■ BK-RAL9005 / Black RAL9005

9000/322-LA

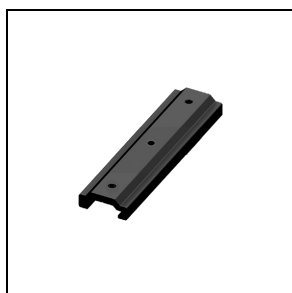


**311052**

Medium suspension clamp with hole for automatic tensioner (100 mm)

■ BK-RAL9005 / Black RAL9005

9000/322-SV

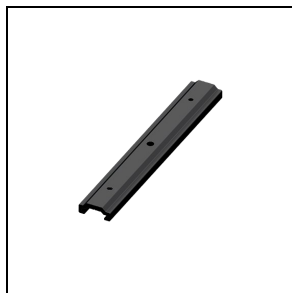


**311055**

Medium suspension clamp with hole for cable with ball terminal (100 mm)

■ BK-RAL9005 / Black RAL9005

9000/332-LA

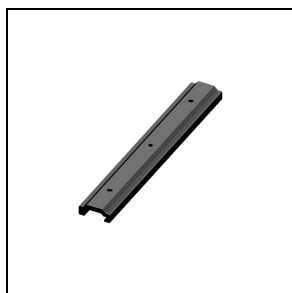


**310754**

Long suspension clamp with hole for automatic tensioner for use with through joint (180 mm)

■ BK-RAL9005 / Black RAL9005

9000/332-SV

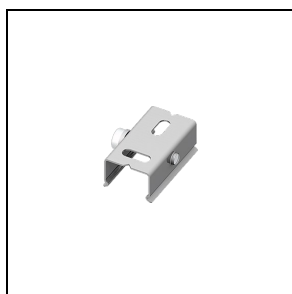


**311078**

Long suspension clamp with hole for cable with ball terminal for use with through joint (180 mm)

■ BK-RAL9005 / Black RAL9005

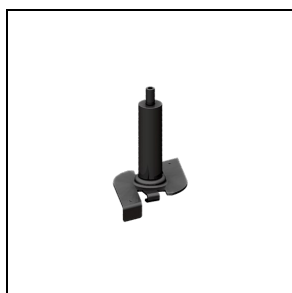
S-9000/111



**310625**

Steel clip for mounting on ceiling

S-9000/114-T



**310742**

Clip with automatic tensioner for quick mounting

■ BK-RAL9005 / Black RAL9005

S-9000/115

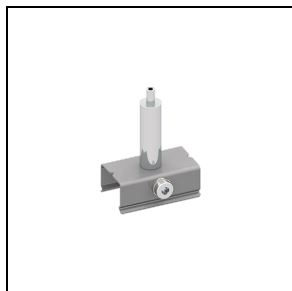


**310649**

Clip for quick mounting

■ BK-RAL9005 / Black RAL9005

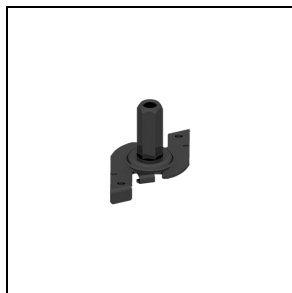
S-9000/116



**310699**

Clamp with automatic tensioner

S-9000/118

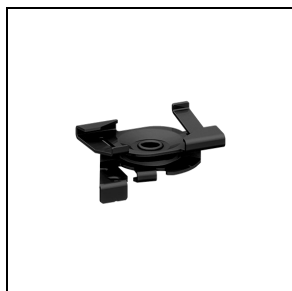


**310694**

Clip for quick mounting with M6  
tensioner

■ BK-RAL9005 / Black RAL9005

S-9000/119-TB

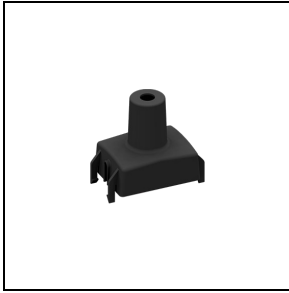


**310688**

Clip for quick mounting of track on T-  
bar

■ BK-RAL9005 / Black RAL9005

S-9000/5



**310611**

Plastic cover for clips and clamps

■ BK-RAL9005 / Black RAL9005

9000/211



**310634**

Steel cable (Ø 1.5 mm - 1.5 m length)



**310643**

Steel cable (Ø 1.5 mm - 2 m length)



**310657**

Steel cable (Ø 1.5 mm - 3 m length)



**310718**

Steel cable (Ø 1.5 mm - 5 m length)

9000/211-S



**310647**

Steel cable (Ø 1.5 mm - 1.5 m length)  
with ball terminal



**310658**

Steel cable (Ø 1.5 mm - 2 m length)  
with ball terminal



**310668**

Steel cable (Ø 1.5 mm - 3 m length)  
with ball terminal



**310726**

Steel cable (Ø 1.5 mm - 5 m length)  
with ball terminal

To maintain the regular updating of our products, PERFORMANCE IN LIGHTING reserves the right to make changes without prior notice. For the most up to date information we always recommend you read the latest version published on the website [www.performanceinlighting.com](http://www.performanceinlighting.com). Delivered luminaire lumen outputs and power consumptions, including losses, are subject to a tolerance of +/- 7%, and unless otherwise stated the values apply to an ambient temperature of 25°C. Terms of warranty are available at <https://www.performanceinlighting.com/qr/company/led-warranty>



**310741**

Steel cable (Ø 1.5 mm - 6 m length)  
with ball terminal

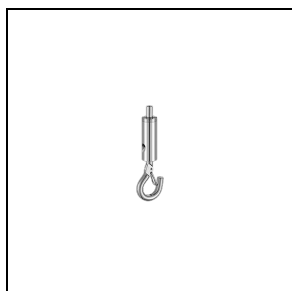
9000/218



**310665**

M5 automatic tensioner with lateral  
hole, in chromed brass

9000/213



**310671**

Automatic hook tensioner, in nickel-  
plated brass

9000/214

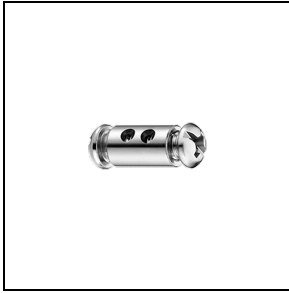


**310693**

Automatic locking tensioner, in nickel-  
plated brass

9000/215

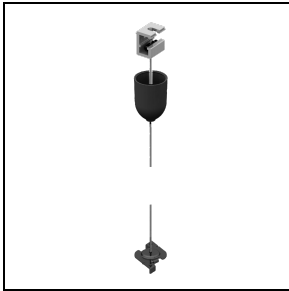
To maintain the regular updating of our products, PERFORMANCE IN LIGHTING reserves the right to make changes without prior notice. For the most up to date information we always recommend you read the latest version published on the website [www.performanceinlighting.com](http://www.performanceinlighting.com). Delivered luminaire lumen outputs and power consumptions, including losses, are subject to a tolerance of +/- 7%, and unless otherwise stated the values apply to an ambient temperature of 25°C. Terms of warranty are available at <https://www.performanceinlighting.com/qr/company/led-warranty>



**310619**

Screw tensioner, in nickel-plated brass

9000-KIT2 - 1,5 m

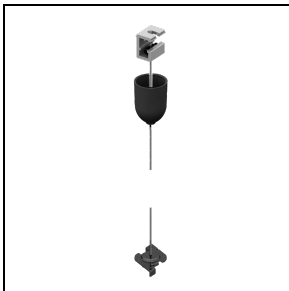


**310776**

Bracket for mounting on ceiling, screw tensioner, plastic ceiling rose, Ø 15 mm 1.5 m-long steel cable with ball end, clip for quick mounting

■ BK-RAL9005 / Black RAL9005

9000-KIT2 - 3 m

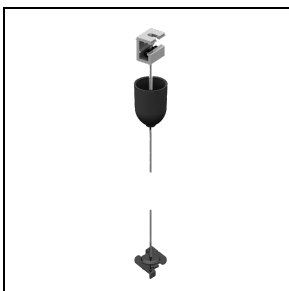


**310785**

Ceiling-mounting bracket, screw tensioner, plastic ceiling rose, Ø 15 mm 3 m-long steel cable with ball end, clip for quick mounting

■ BK-RAL9005 / Black RAL9005

9000-KIT2 - 5 m

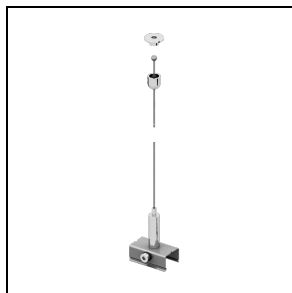


**310811**

Bracket for mounting on ceiling, screw tensioner, plastic ceiling rose, Ø 15 mm 5 m-long steel cable with ball end, clip for quick mounting

■ BK-RAL9005 / Black RAL9005

9000-KIT4 - 1,5 m



**310801**

Metal ball ceiling rose with hole, Ø 1.5 mm 1.5 m-long steel cable with ball end, with automatic tensioner

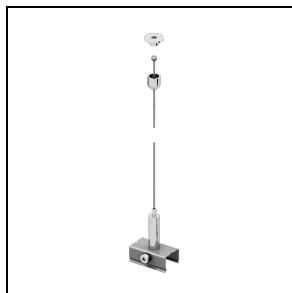
9000-KIT4 - 3 m



**310805**

Metal ball ceiling rose with hole, Ø 1.5 mm 3 m-long steel cable with ball end, with automatic tensioner

9000-KIT4 - 5 m



**310831**

Metal ball ceiling rose with hole, Ø 1.5 mm 5 m-long steel cable with ball end, with automatic tensioner

9000-KIT6 - 1,5 m



**310779**

Screw tensioner, plastic ceiling rose, Ø 1.5 mm 1.5 m-long steel cable with ball end, bracket with milled hole and automatic tensioner

■ BK-RAL9005 / Black RAL9005

9000-KIT6 - 3 m

**310792**

Screw tensioner, plastic ceiling rose, Ø 1,5 mm 3 m-long steel cable with ball end, bracket with milled hole and automatic tensioner

■ BK-RAL9005 / Black RAL9005

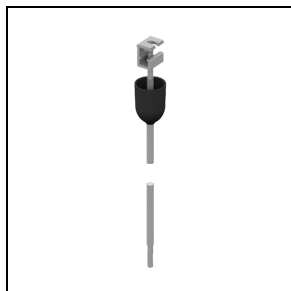
## 9000-KIT6 - 5 m

**310808**

Screw tensioner, plastic ceiling rose, Ø 1,5 mm 5 m-long steel cable with ball end, bracket with milled hole and automatic tensioner

■ BK-RAL9005 / Black RAL9005

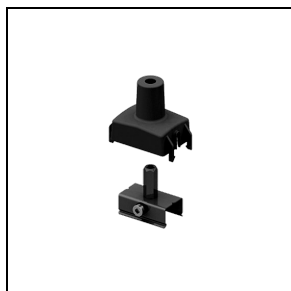
## 9000-P3-KIT4 - 1 m

**310768**

Bracket for mounting on ceiling, M6 nut, plastic ceiling rose, M6 1 m-long threaded bar with cover sheath

■ BK-RAL9005 / Black RAL9005

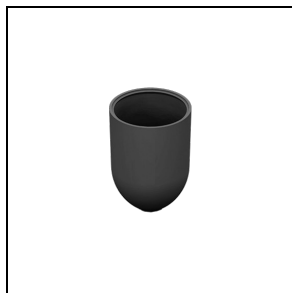
## 9000-P2

**310734**

Bracket with M6 tensioner and plastic cover

■ BK-RAL9005 / Black RAL9005

## 9000/3

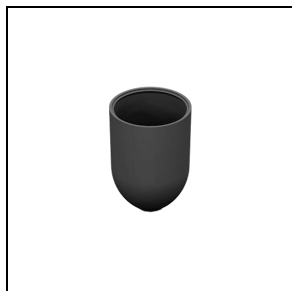


**310601**

Plastic ceiling rose for Ø 1.5 mm steel cable

■ BK-RAL9005 / Black RAL9005

9000/4



**310604**

Plastic ceiling rose for threaded bar in M6 steel

■ BK-RAL9005 / Black RAL9005

9000/216



**310644**

Metal ball ceiling rose with hole

9009

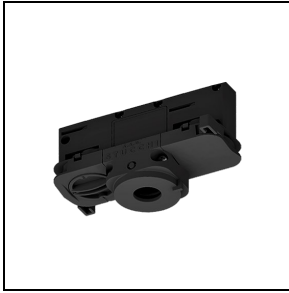


**310749**

6-Conductor DALI adapter (3-phase + control system) (maximum load 100 N = 10.2 kg)

■ BK-RAL9005 / Black RAL9005

9009-4



**310721**

4-Conductor adapter (3-phase)  
(maximum load 100 N = 10.2 kg)

■ BK-RAL9005 / Black RAL9005

S-9209



**310757**

Asymmetric 6-conductor Dali adapter  
(3-phase + control system) (maximum  
load 100 N = 10.2 kg)

■ BK-RAL9005 / Black RAL9005

9209-4



**310732**

Asymmetric 4-conductor adapter (3-  
phase) (maximum load 100 N = 10.2 kg)

■ BK-RAL9005 / Black RAL9005

9409-4

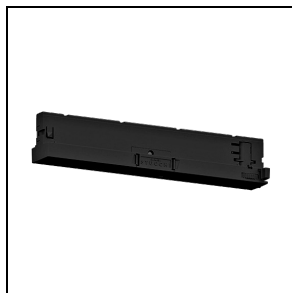


**311058**

Asymmetric 4-conductor adapter (3-  
phase) (maximum load 50 N = 5.1 kg)

■ BK-RAL9005 / Black RAL9005

9409-4-DRI



**311061**

Compact 4-conductor adapter with integrated driver (3-phase) (100-850 mA - max. 40 VDC)

■ BK-RAL9005 / Black RAL9005

9909-4-DRI

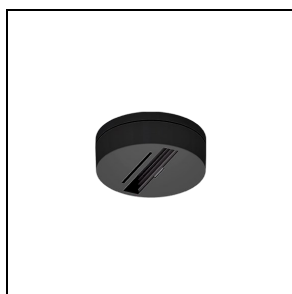


**310886**

Integrated 4-conductor adapter with integrated driver (3-phase) (100-850 mA - max. 40 VDC)

■ BK-RAL9005 / Black RAL9005

9000/BP-D



**310843**

Adapter ceiling-mounting base (without using the track)

■ BK-RAL9005 / Black RAL9005

9000/BR

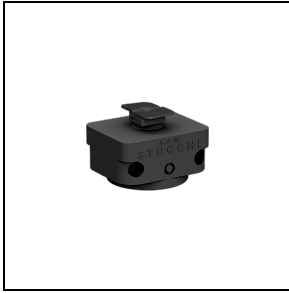


**310828**

Adapter suspended ceiling-mounting base (without using the track)

■ BK-RAL9005 / Black RAL9005

S-9000/M



**310676**

Mechanical adapter

■ BK-RAL9005 / Black RAL9005

S-g000/BC

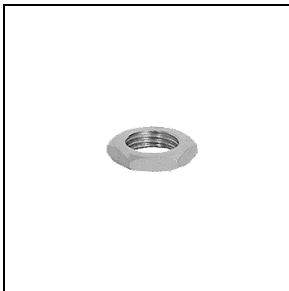


**310622**

External cable clamp with plastic grub screw

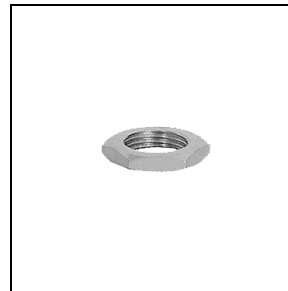
■ BK-RAL9005 / Black RAL9005

S-g000/D



**310609**

Nut for M10 connector



**310610**

Nut for M13 connector

g009/IP40

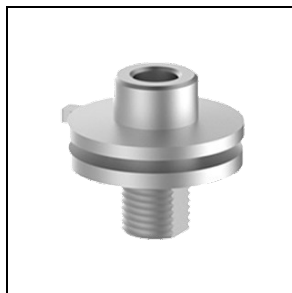


**310588**

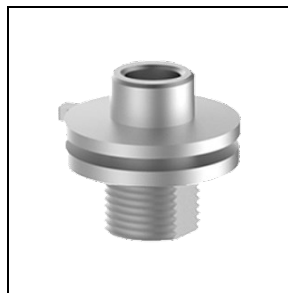
IP40 Housing for symmetrical adapter

■ BK-RAL9005 / Black RAL9005

S-g000

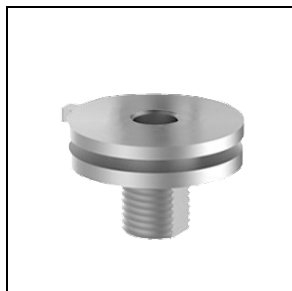


**310638**  
Aluminium M10 connector for adapter



**310639**  
Aluminium M13 connector for adapter

S-g000/SC



**310662**  
Aluminium M10 connector without collar for adapter



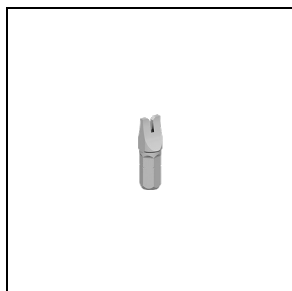
**310663**  
Aluminium M13 connector without collar for adapter

S-g000/FI



**310648**  
Aluminium M10 connector with internal thread for adapter

g009/T-INS



**310862**  
Adapter wiring insert

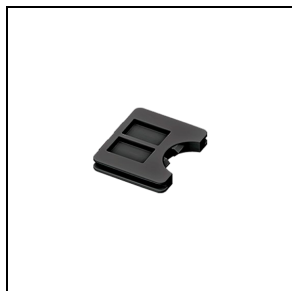
g009/T-HAN

To maintain the regular updating of our products, PERFORMANCE IN LIGHTING reserves the right to make changes without prior notice. For the most up to date information we always recommend you read the latest version published on the website [www.performanceinlighting.com](http://www.performanceinlighting.com). Delivered luminaire lumen outputs and power consumptions, including losses, are subject to a tolerance of +/- 7%, and unless otherwise stated the values apply to an ambient temperature of 25°C. Terms of warranty are available at <https://www.performanceinlighting.com/qr/company/led-warranty>



**310846**  
Handle for adapter wiring insert

9009/10



**310582**  
Internal cable clamp for symmetrical  
adapter  
■ BK-RAL9005 / Black RAL9005

9009/51



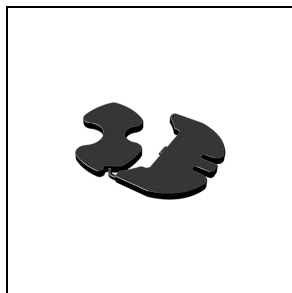
**310656**  
Aluminium ring with block grub screw  
to prevent twisting of adapter  
connectors

9209/IP40



**310589**  
IP40 Housing for asymmetrical adapter  
■ BK-RAL9005 / Black RAL9005

9209/20



**310583**

Internal cable clamp for asymmetrical adapter

■ BK-RAL9005 / Black RAL9005

9909-DRI/11

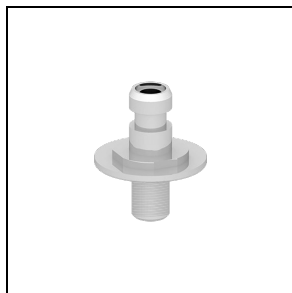


**310598**

Plastic friction ring for retractable adapter

■ BK-RAL9005 / Black RAL9005

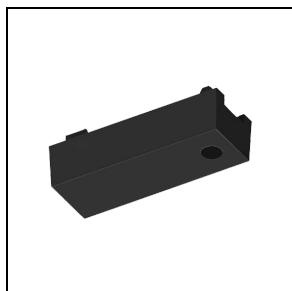
9909/M10



**310731**

M10 Terminal for retractable adapter

9209/BD-M

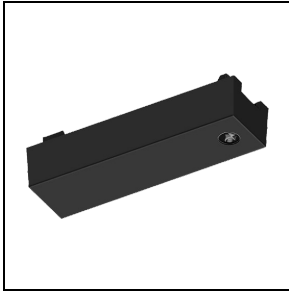


**310719**

LED driver box. For use with asymmetrical adaptor 9209... Max. size for driver housing: 116x52x30 mm

■ BK-RAL9005 / Black RAL9005

9209/BD-L

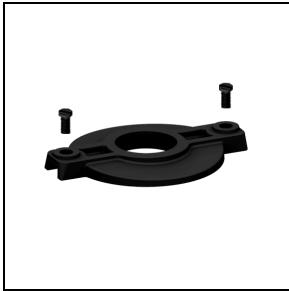


**310723**

LED driver box. For use with asymmetrical adaptor 9209... Max. size for driver housing: 116x52x30 mm

■ BK-RAL9005 / Black RAL9005

9209-BD/3



**310607**

Plastic cover and screws for LED driver box connectors

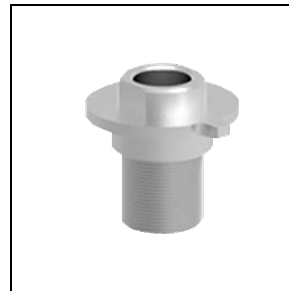
■ BK-RAL9005 / Black RAL9005

9209-BD



**310669**

Aluminium M10 connector for LED driver box



**310670**

Aluminium M13 connector for LED driver box

9209-BD-10/4



**310594**

Adapter for M10 connector for LED driver box

■ BK-RAL9005 / Black RAL9005

9209-BD-13/4



**310596**

Adapter for M13 connector for LED driver box

■ BK-RAL9005 / Black RAL9005

DRV BX KIT-BD/M10



**310707**

Kit for LED driver box - complete set for M10 mounting

■ BK-RAL9005 / Black RAL9005

DRV BX KIT-BD/M13



**310709**

Kit for LED driver box - complete set for M13 mounting

■ BK-RAL9005 / Black RAL9005

9909-DRI



**310895**

Integrated 6-conductor DALI adapter with integrated driver (3-phase + control system) (350-500 mA - max. 50 VDC)

■ BK-RAL9005 / Black RAL9005