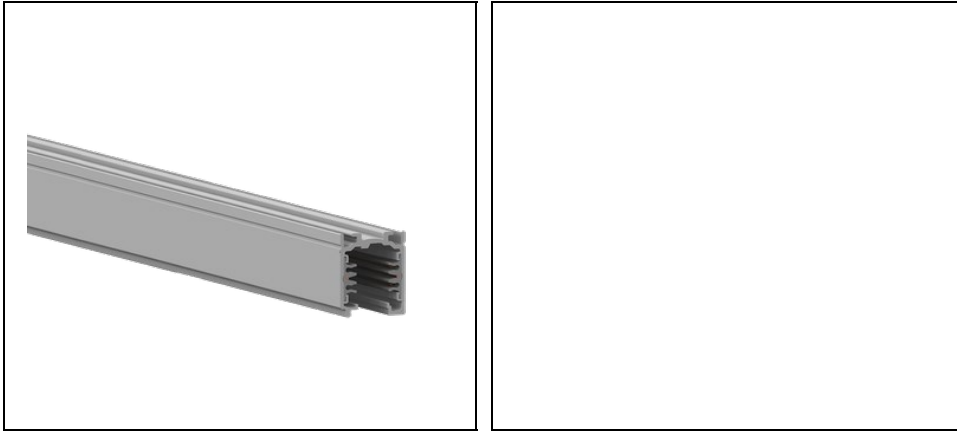


OTR TRACKS RAILS STANDARD

Part number 310871



Description

The track system with 3 switches is a complete installation system designed for stores, hypermarkets, public facilities, museums

- All designs can be easily implemented, and assembly is facilitated by the use of tracks and standard accessories
- Designed for exposed, recessed or suspension installation, and the luminaires can be easily moved, changed or modified
- The indication "earthing conductor on the right, left, inside or outside" for power supply units, corner and T- derivations are based on the earthing conductor's position on the track. The position of the earthing conductor on the track depends on the visual direction. The visual direction follows the operating direction of the system on the cross cup of the track that opens downwards
- Compatible with 3F "standard" adaptors that do not use DIM
- The OTR binary system is a mixed three-phase system with two additional conductors for the management of any signal (e.g. DIM 1-10 V, DALI, DMX, LON, EIB, etc)

To maintain the regular updating of our products, PERFORMANCE IN LIGHTING reserves the right to make changes without prior notice. For the most up to date information we always recommend you read the latest version published on the website www.performanceinlighting.com. Delivered luminaire lumen outputs and power consumptions, including losses, are subject to a tolerance of +/- 7%, and unless otherwise stated the values apply to an ambient temperature of 25°C. Terms of warranty are available at <https://www.performanceinlighting.com/qr/company/led-warranty>

Product data

ETIM Group:	EG000030	ETIM Class:	EC000101
-------------	----------	-------------	----------

General information

Light source:		Colour / Finishing:	GR-94 / Metallic grey / Textured
Optic:	-	Net weight [kg]:	2.12
Overall length [mm]:	2000	Overall width [mm]:	31
Overall height [mm]:	38		

Installation

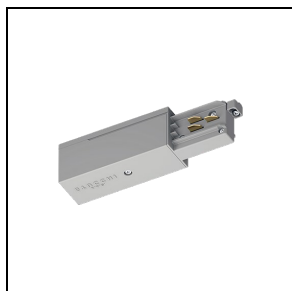
Application area:	Indoor lighting	Mounting type:	Tracklight
Min. ambient temperature [°C]:	0		

Light features

To maintain the regular updating of our products, PERFORMANCE IN LIGHTING reserves the right to make changes without prior notice. For the most up to date information we always recommend you read the latest version published on the website www.performanceinlighting.com. Delivered luminaire lumen outputs and power consumptions, including losses, are subject to a tolerance of +/- 7%, and unless otherwise stated the values apply to an ambient temperature of 25°C. Terms of warranty are available at <https://www.performanceinlighting.com/qr/company/led-warranty>

Mandatory accessories

9001 - OTR END - FEED RIGHT

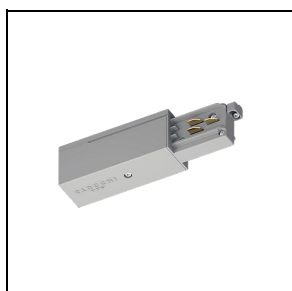


310755

Feeder - L - right mechanical wrench
/ left grounding

■ GR-RAL7035 / Grey RAL7035

9002 - OTR END - FEED LEFT

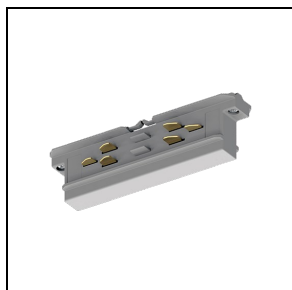


310756

Feeder - R - right mechanical wrench
/ right grounding

■ GR-RAL7035 / Grey RAL7035

9003 - OTR TK CONNECTOR

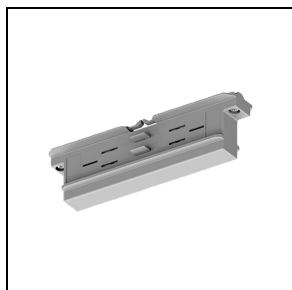


310712

Through joint

■ GR-RAL7035 / Grey RAL7035

9003-M - OTR TK CONNECTOR ONLY MECHA

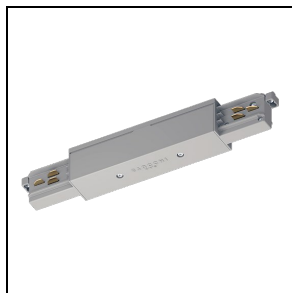


310666

Insulating connection

■ GR-RAL7035 / Grey RAL7035

9010 - OTR MIDDLE-FEED

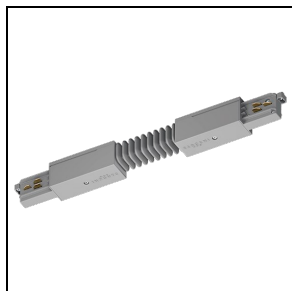


310821

Direct joint

■ GR-RAL7035 / Grey RAL7035

9018 - OTR FLEXIBLE CORNER



310848

Flexible joint

■ GR-RAL7035 / Grey RAL7035

9011 - OTR L - FEED INT

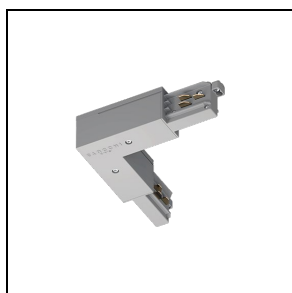


310825

L-shaped joint - internal mechanical
wrench / external grounding

■ GR-RAL7035 / Grey RAL7035

9012 - OTR L - FEED EXT

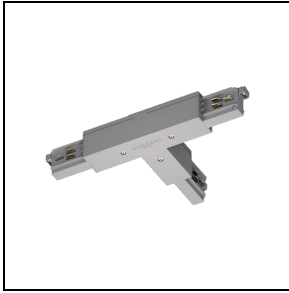


310826

L-shaped joint - external mechanical
wrench / internal grounding

■ GR-RAL7035 / Grey RAL7035

9013 - OTR T - FEED EXT LEFT

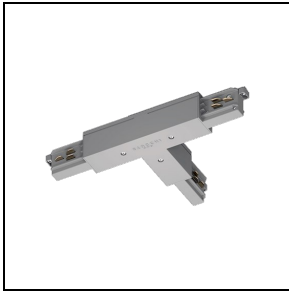


310854

T-shaped joint - left mechanical wrench / right grounding

■ GR-RAL7035 / Grey RAL7035

9014 - OTR T - FEED EXT RIGHT



310855

T-shaped joint - right external mechanical wrench / left internal grounding

■ GR-RAL7035 / Grey RAL7035

9015 - OTR T - FEED INT LEFT



310856

T-shaped joint - left internal mechanical wrench / right external grounding

■ GR-RAL7035 / Grey RAL7035

9016 - OTR T - FEED INT RIGHT

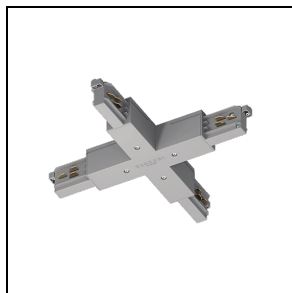


310857

T-shaped joint - right internal mechanical wrench / left external grounding

■ GR-RAL7035 / Grey RAL7035

9017 - OTR X - FEED

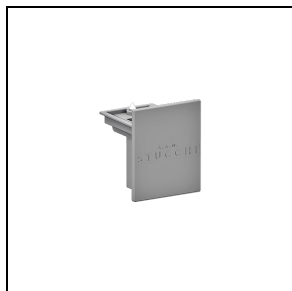


310875

X-shaped joint

■ GR-RAL7035 / Grey RAL7035

9004



310615

Closing cap with locking screw

■ GR-RAL7035 / Grey RAL7035

9000/H

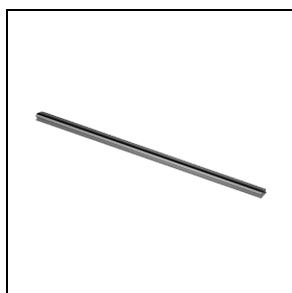


310629

Suspension hook

■ GR-RAL7035 / Grey RAL7035

S-9000/GP



310636

Additional protective sheath (1 m)

■ GR-RAL7035 / Grey RAL7035

9000/TP

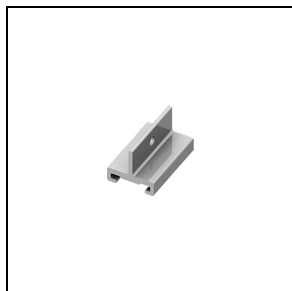


310621

Additional protective cap for track slots

■ GR-RAL7035 / Grey RAL7035

S-9000/113

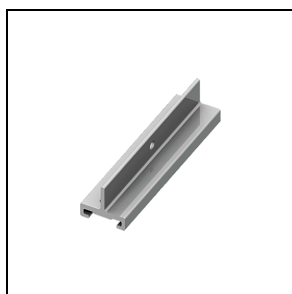


310645

Short suspension clamp (40 mm)

■ GR-RAL7035 / Grey RAL7035

S-9000/123

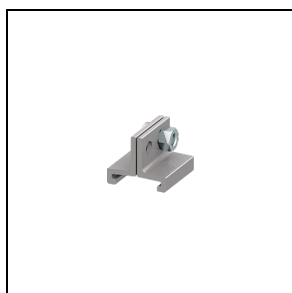


310715

Long suspension clamp for use with
through joint (100 mm)

■ GR-RAL7035 / Grey RAL7035

S-9000/313

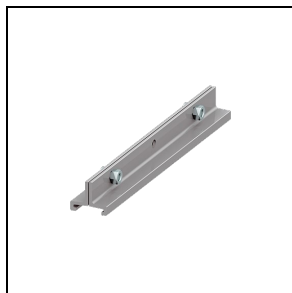


310646

Short suspension clamp (25 mm)

■ GR-RAL7035 / Grey RAL7035

S-9000/333

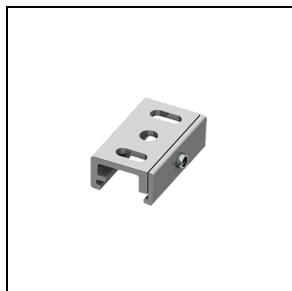


310716

Long suspension clamp (180 mm)

■ GR-RAL7035 / Grey RAL7035

S-9000/131

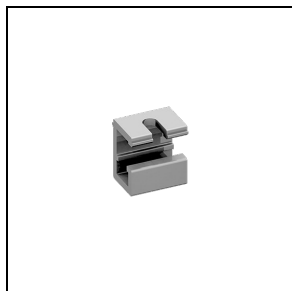


310682

Ceiling-mounting clamp

■ GR-RAL7035 / Grey RAL7035

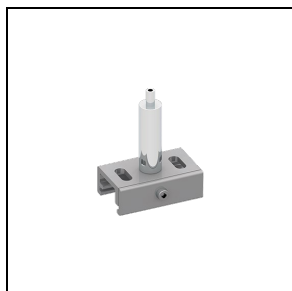
S-9000/132



310642

Ceiling-mounting clamp for
suspensions

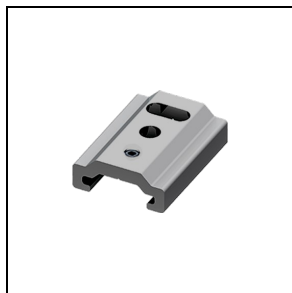
9000/231



310740

Clamp with automatic tensioner

9000/312-LA



311047

Short suspension clamp with hole for automatic tensioner (35 mm)

■ GR-RAL7035 / Grey RAL7035

9000/312-SV



311050

Short suspension clamp with hole for cable with ball terminal (35 mm)

■ GR-RAL7035 / Grey RAL7035

9000/322-LA

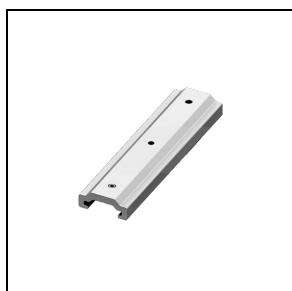


311053

Medium suspension clamp with hole for automatic tensioner (100 mm)

■ GR-RAL7035 / Grey RAL7035

9000/322-SV

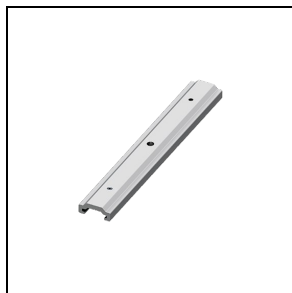


311056

Medium suspension clamp with hole for cable with ball terminal (100 mm)

■ GR-RAL7035 / Grey RAL7035

9000/332-LA

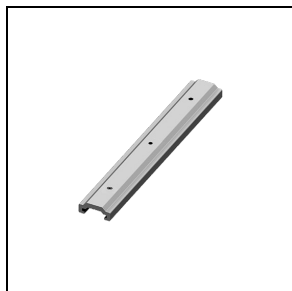


311076

Long suspension clamp with hole for automatic tensioner for use with through joint (180 mm)

■ GR-RAL7035 / Grey RAL7035

9000/332-SV

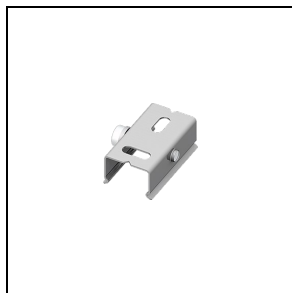


310739

Long suspension clamp with hole for cable with ball terminal for use with through joint (180 mm)

■ GR-RAL7035 / Grey RAL7035

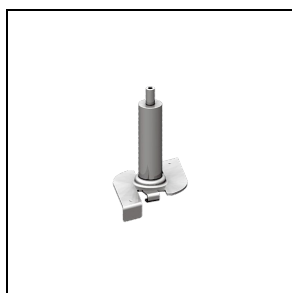
S-9000/111



310625

Steel clip for mounting on ceiling

S-9000/114-T



310743

Clip with automatic tensioner for quick mounting

■ GR-RAL7035 / Grey RAL7035

S-9000/115

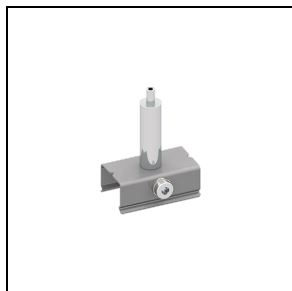


310650

Clip for quick mounting

■ GR-RAL7035 / Grey RAL7035

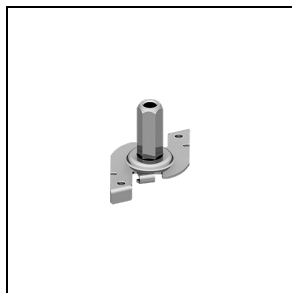
S-9000/116



310699

Clamp with automatic tensioner

S-9000/118

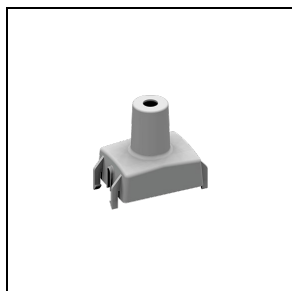


310695

Clip for quick mounting with M6 tensioner

■ GR-RAL7035 / Grey RAL7035

S-9000/5



310612

Plastic cover for clips and clamps

■ GR-RAL7035 / Grey RAL7035

9000/211



310634
Steel cable (Ø 1.5 mm - 1.5 m length)



310643
Steel cable (Ø 1.5 mm - 2 m length)



310657
Steel cable (Ø 1.5 mm - 3 m length)



310718
Steel cable (Ø 1.5 mm - 5 m length)

9000/211-S



310647
Steel cable (Ø 1.5 mm - 1.5 m length)
with ball terminal



310658
Steel cable (Ø 1.5 mm - 2 m length)
with ball terminal



310668
Steel cable (Ø 1.5 mm - 3 m length)
with ball terminal



310726
Steel cable (Ø 1.5 mm - 5 m length)
with ball terminal



310741
Steel cable (Ø 1.5 mm - 6 m length)
with ball terminal

To maintain the regular updating of our products, PERFORMANCE IN LIGHTING reserves the right to make changes without prior notice. For the most up to date information we always recommend you read the latest version published on the website www.performanceinlighting.com. Delivered luminaire lumen outputs and power consumptions, including losses, are subject to a tolerance of +/- 7%, and unless otherwise stated the values apply to an ambient temperature of 25°C. Terms of warranty are available at <https://www.performanceinlighting.com/qr/company/led-warranty>

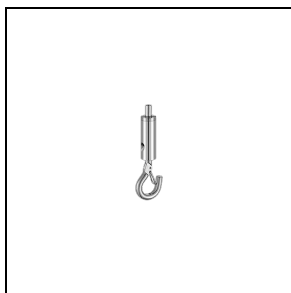
9000/218



310665

M5 automatic tensioner with lateral hole, in chromed brass

9000/213



310671

Automatic hook tensioner, in nickel-plated brass

9000/214



310693

Automatic locking tensioner, in nickel-plated brass

9000/215

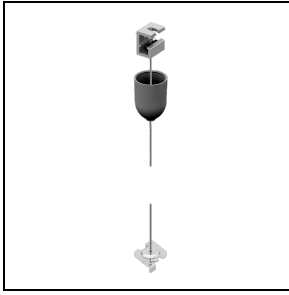


310619

Screw tensioner, in nickel-plated brass

9000-KIT2 - 1,5 m

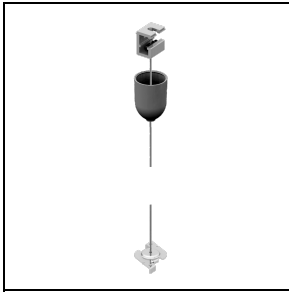
To maintain the regular updating of our products, PERFORMANCE iN LIGHTING reserves the right to make changes without prior notice. For the most up to date information we always recommend you read the latest version published on the website www.performanceinlighting.com. Delivered luminaire lumen outputs and power consumptions, including losses, are subject to a tolerance of +/- 7%, and unless otherwise stated the values apply to an ambient temperature of 25°C. Terms of warranty are available at <https://www.performanceinlighting.com/qr/company/led-warranty>

**310777**

Bracket for mounting on ceiling, screw tensioner, plastic ceiling rose, Ø 1.5 mm 1.5 m-long steel cable with ball end, clip for quick mounting

■ GR-RAL7035 / Grey RAL7035

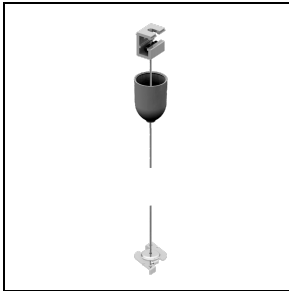
9000-KIT2 - 3 m

**310786**

Ceiling-mounting bracket, screw tensioner, plastic ceiling rose, Ø 1.5 mm 3 m-long steel cable with ball end, clip for quick mounting

■ GR-RAL7035 / Grey RAL7035

9000-KIT2 - 5 m

**310812**

Bracket for mounting on ceiling, screw tensioner, plastic ceiling rose, Ø 1.5 mm 5 m-long steel cable with ball end, clip for quick mounting

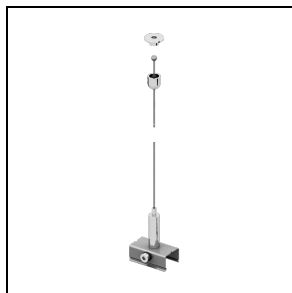
■ GR-RAL7035 / Grey RAL7035

9000-KIT4 - 1,5 m

**310801**

Metal ball ceiling rose with hole, Ø 1.5 mm 1.5 m-long steel cable with ball end, with automatic tensioner

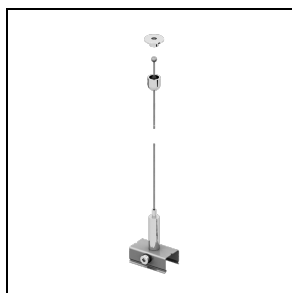
9000-KIT4 - 3 m



310805

Metal ball ceiling rose with hole, Ø 1.5 mm 3 m-long steel cable with ball end, with automatic tensioner

9000-KIT4 - 5 m



310831

Metal ball ceiling rose with hole, Ø 1.5 mm 5 m-long steel cable with ball end, with automatic tensioner

9000-KIT6 - 1,5 m



310780

Screw tensioner, plastic ceiling rose, Ø 1.5 mm 1.5 m-long steel cable with ball end, bracket with milled hole and automatic tensioner

■ GR-RAL7035 / Grey RAL7035

9000-KIT6 - 3 m

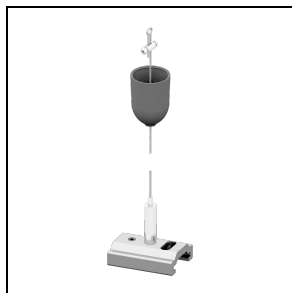


310793

Screw tensioner, plastic ceiling rose, Ø 1.5 mm 3 m-long steel cable with ball end, bracket with milled hole and automatic tensioner

■ GR-RAL7035 / Grey RAL7035

9000-KIT6 - 5 m

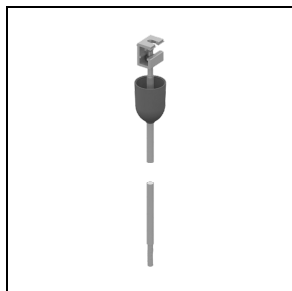


310809

Screw tensioner, plastic ceiling rose, Ø 1.5 mm 5 m-long steel cable with ball end, bracket with milled hole and automatic tensioner

■ GR-RAL7035 / Grey RAL7035

9000-P3-KIT4 - 1 m

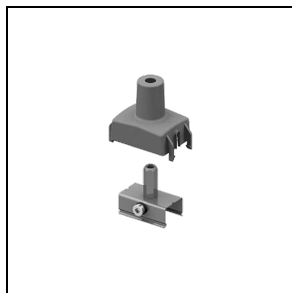


310769

Bracket for mounting on ceiling, M6 nut, plastic ceiling rose, M6 1 m-long threaded bar with cover sheath

■ GR-RAL7035 / Grey RAL7035

9000-P2

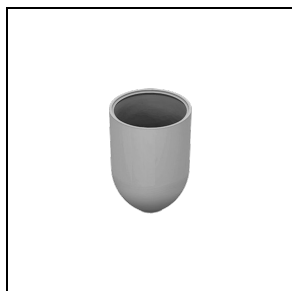


310735

Bracket with M6 tensioner and plastic cover

■ GR-RAL7035 / Grey RAL7035

9000/3

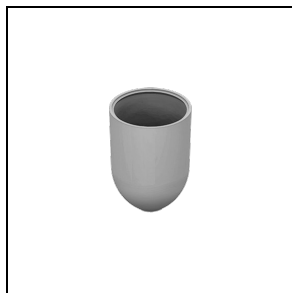


310602

Plastic ceiling rose for Ø 1.5 mm steel cable

■ GR-RAL7035 / Grey RAL7035

9000/4



310605

Plastic ceiling rose for threaded bar in M6 steel

■ GR-RAL7035 / Grey RAL7035

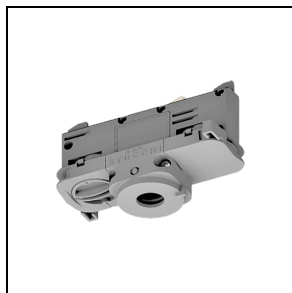
9000/216



310644

Metal ball ceiling rose with hole

9009

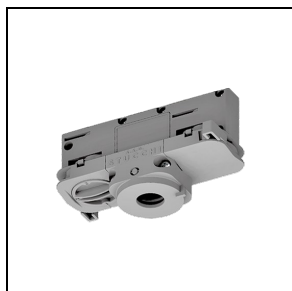


310750

6-Conductor DALI adapter (3-phase + control system) (maximum load 100 N = 10.2 kg)

■ GR-RAL7035 / Grey RAL7035

9009-4



310722

4-Conductor adapter (3-phase) (maximum load 100 N = 10.2 kg)

■ GR-RAL7035 / Grey RAL7035

S-9209

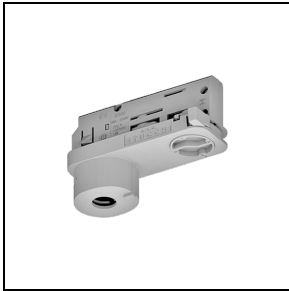


310760

Asymmetric 6-conductor Dali adapter (3-phase + control system) (maximum load 100 N = 10.2 kg)

■ GR-RAL7035 / Grey RAL7035

9209-4

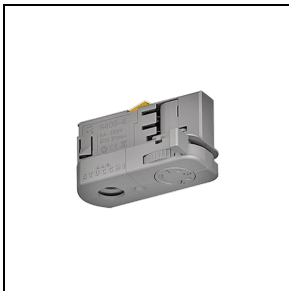


310733

Asymmetric 4-conductor adapter (3-phase) (maximum load 100 N = 10.2 kg)

■ GR-RAL7035 / Grey RAL7035

9409-4

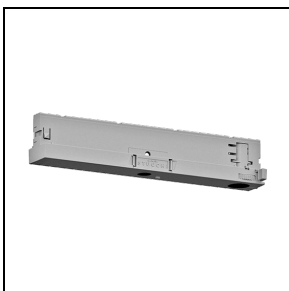


311059

Asymmetric 4-conductor adapter (3-phase) (maximum load 50 N = 5.1 kg)

■ GR-RAL7035 / Grey RAL7035

9409-4-DRI

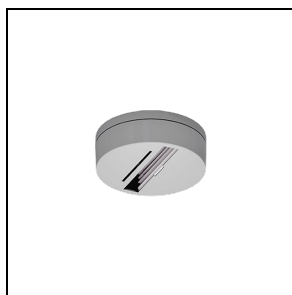


311062

Compact 4-conductor adapter with integrated driver (3-phase) (100-850 mA - max. 40 VDC)

■ GR-RAL7035 / Grey RAL7035

9000/BP-D



310844

Adapter ceiling-mounting base
(without using the track)

■ GR-RAL7035 / Grey RAL7035

g000/BR

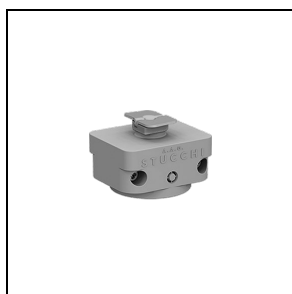


310829

Adapter suspended ceiling-mounting
base (without using the track)

■ GR-RAL7035 / Grey RAL7035

S-g000/M

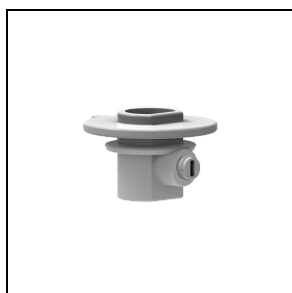


310677

Mechanical adapter

■ GR-RAL7035 / Grey RAL7035

S-g000/BC

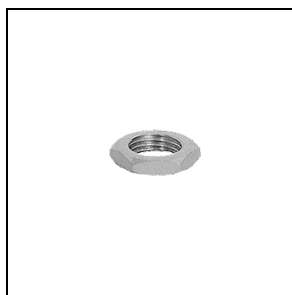


310623

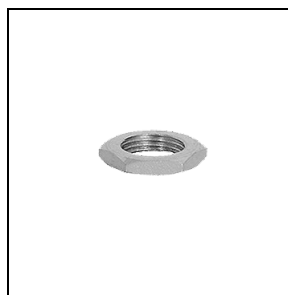
External cable clamp with plastic grub
screw

■ GR-RAL7035 / Grey RAL7035

S-g000/D



310609
Nut for M10 connector



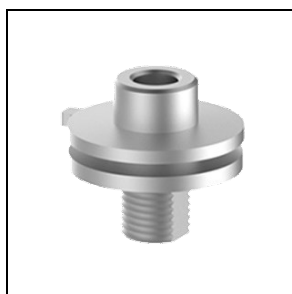
310610
Nut for M13 connector

g009/IP40

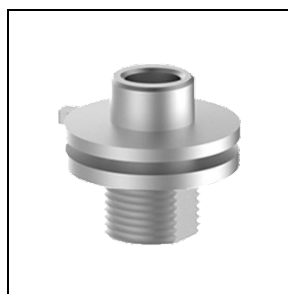


310590
IP40 Housing for symmetrical adapter
■ GR-RAL7035 / Grey RAL7035

S-g000

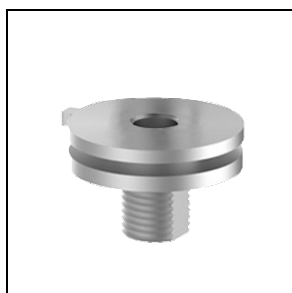


310638
Aluminium M10 connector for adapter



310639
Aluminium M13 connector for adapter

S-g000/SC



310662
Aluminium M10 connector without collar for adapter



310663
Aluminium M13 connector without collar for adapter

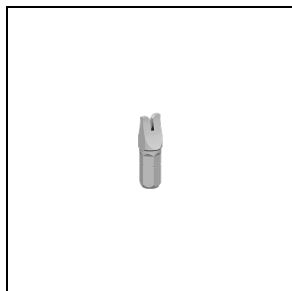
S-g000/FI



310648

Aluminium M10 connector with
internal thread for adapter

9009/T-INS



310862

Adapter wiring insert

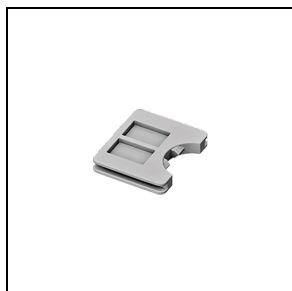
9009/T-HAN



310846

Handle for adapter wiring insert

9009/10



310584

Internal cable clamp for symmetrical
adapter

■ GR-RAL7035 / Grey RAL7035

9009/51



310656

Aluminium ring with block grub screw to prevent twisting of adapter connectors

9209/IP40

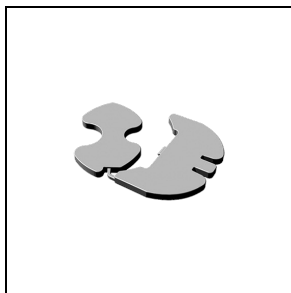


310591

IP40 Housing for asymmetrical adapter

■ GR-RAL7035 / Grey RAL7035

9209/20

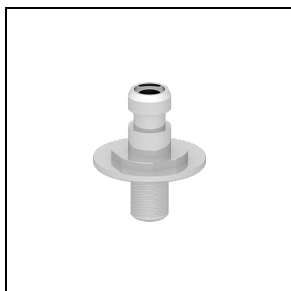


310585

Internal cable clamp for asymmetrical adapter

■ GR-RAL7035 / Grey RAL7035

9909/M10



310731

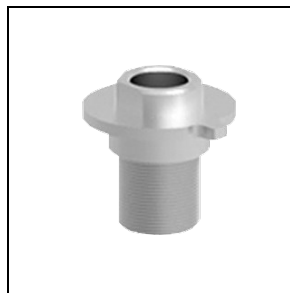
M10 Terminal for retractable adapter

9209-BD



310669

Aluminium M10 connector for LED driver box



310670

Aluminium M13 connector for LED driver box

To maintain the regular updating of our products, PERFORMANCE IN LIGHTING reserves the right to make changes without prior notice. For the most up to date information we always recommend you read the latest version published on the website www.performanceinlighting.com. Delivered luminaire lumen outputs and power consumptions, including losses, are subject to a tolerance of +/- 7%, and unless otherwise stated the values apply to an ambient temperature of 25°C. Terms of warranty are available at <https://www.performanceinlighting.com/qr/company/led-warranty>