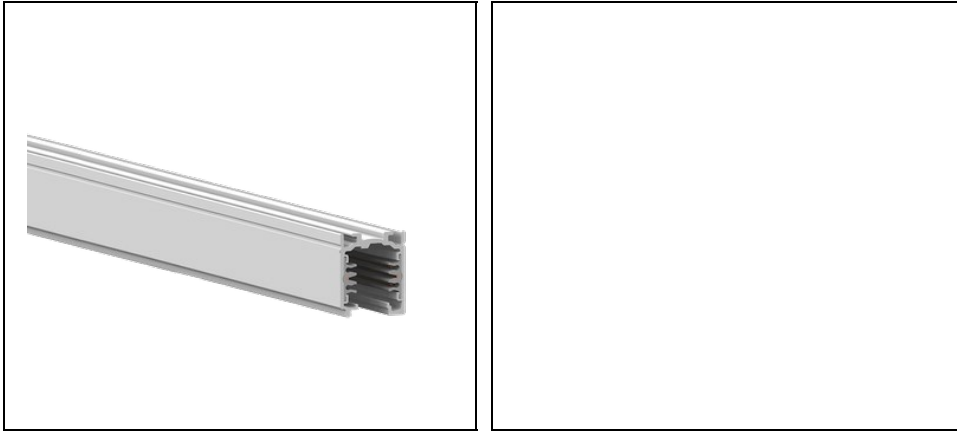


OTR TRACKS RAILS STANDARD

Part number 310889



Description

The track system with 3 switches is a complete installation system designed for stores, hypermarkets, public facilities, museums

- All designs can be easily implemented, and assembly is facilitated by the use of tracks and standard accessories
- Designed for exposed, recessed or suspension installation, and the luminaires can be easily moved, changed or modified
- The indication "earthing conductor on the right, left, inside or outside" for power supply units, corner and T- derivations are based on the earthing conductor's position on the track. The position of the earthing conductor on the track depends on the visual direction. The visual direction follows the operating direction of the system on the cross cup of the track that opens downwards
- Compatible with 3F "standard" adaptors that do not use DIM
- The OTR binary system is a mixed three-phase system with two additional conductors for the management of any signal (e.g. DIM 1-10 V, DALI, DMX, LON, EIB, etc)

To maintain the regular updating of our products, PERFORMANCE IN LIGHTING reserves the right to make changes without prior notice. For the most up to date information we always recommend you read the latest version published on the website www.performanceinlighting.com. Delivered luminaire lumen outputs and power consumptions, including losses, are subject to a tolerance of +/- 7%, and unless otherwise stated the values apply to an ambient temperature of 25°C. Terms of warranty are available at <https://www.performanceinlighting.com/qr/company/led-warranty>

Product data

ETIM Group:	EG000030	ETIM Class:	EC000101
-------------	----------	-------------	----------

General information

Light source:		Colour / Finishing:	WH-87 / White / Textured
Optic:	-	Net weight [kg]:	3.18
Overall length [mm]:	3000	Overall width [mm]:	31
Overall height [mm]:	38		

Installation

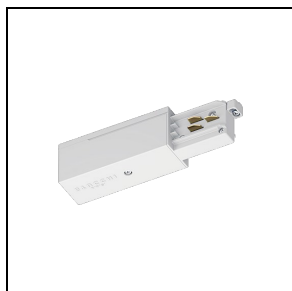
Application area:	Indoor lighting	Mounting type:	Tracklight
Min. ambient temperature [°C]:	0		

Light features

To maintain the regular updating of our products, PERFORMANCE IN LIGHTING reserves the right to make changes without prior notice. For the most up to date information we always recommend you read the latest version published on the website www.performanceinlighting.com. Delivered luminaire lumen outputs and power consumptions, including losses, are subject to a tolerance of +/- 7%, and unless otherwise stated the values apply to an ambient temperature of 25°C. Terms of warranty are available at <https://www.performanceinlighting.com/qr/company/led-warranty>

Mandatory accessories

9001 - OTR END - FEED RIGHT



310758

Feeder - L - right mechanical wrench
/ left grounding

WH-RAL9010 / White RAL9010

9002 - OTR END - FEED LEFT



310759

Feeder - R - right mechanical wrench
/ right grounding

WH-RAL9010 / White RAL9010

9003 - OTR TK CONNECTOR

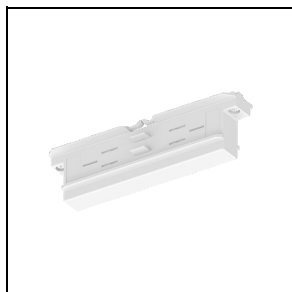


310713

Through joint

WH-RAL9010 / White RAL9010

9003-M - OTR TK CONNECTOR ONLY MECHA



310667

Insulating connection

WH-RAL9010 / White RAL9010

9010 - OTR MIDDLE-FEED

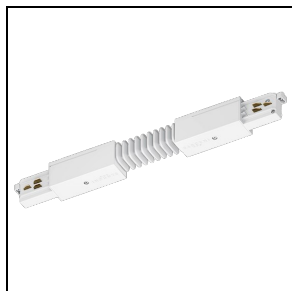


310827

Direct joint

WH-RAL9010 / White RAL9010

9018 - OTR FLEXIBLE CORNER



310849

Flexible joint

WH-RAL9010 / White RAL9010

9011 - OTR L - FEED INT



310832

L-shaped joint - internal mechanical
wrench / external grounding

WH-RAL9010 / White RAL9010

9012 - OTR L - FEED EXT

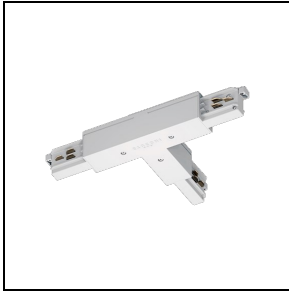


310833

L-shaped joint - external mechanical
wrench / internal grounding

WH-RAL9010 / White RAL9010

9013 - OTR T - FEED EXT LEFT

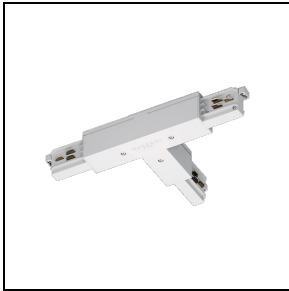


310858

T-shaped joint - left mechanical wrench / right grounding

WH-RAL9010 / White RAL9010

9014 - OTR T - FEED EXT RIGHT

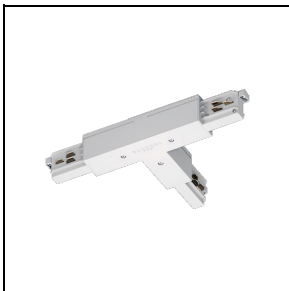


310859

T-shaped joint - right external mechanical wrench / left internal grounding

WH-RAL9010 / White RAL9010

9015 - OTR T - FEED INT LEFT



310860

T-shaped joint - left internal mechanical wrench / right external grounding

WH-RAL9010 / White RAL9010

9016 - OTR T - FEED INT RIGHT

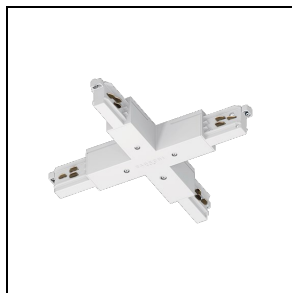


310861

T-shaped joint - right internal mechanical wrench / left external grounding

WH-RAL9010 / White RAL9010

9017 - OTR X - FEED

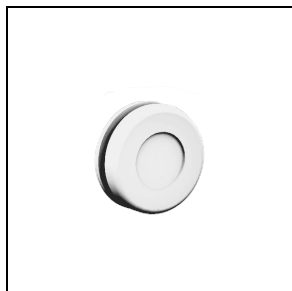


310876

X-shaped joint

WH-RAL9010 / White RAL9010

9001 /115



310581

Gasket for feeder

WH-RAL9010 / White RAL9010

9004



310617

Closing cap with locking screw

WH-RAL9010 / White RAL9010

9000/H

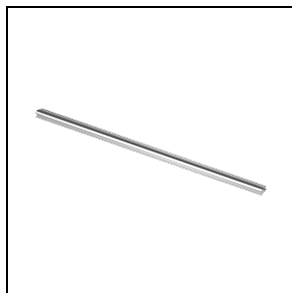


310630

Suspension hook

WH-RAL9010 / White RAL9010

S-9000/GP

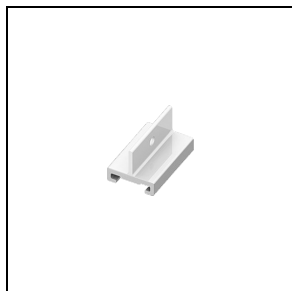


310637

Additional protective sheath (1 m)

WH-RAL9010 / White RAL9010

S-9000/113

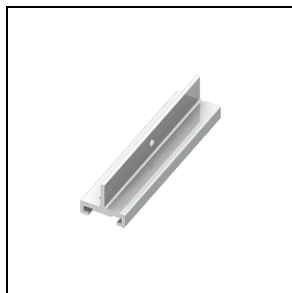


310653

Short suspension clamp (40 mm)

WH-RAL9010 / White RAL9010

S-9000/123

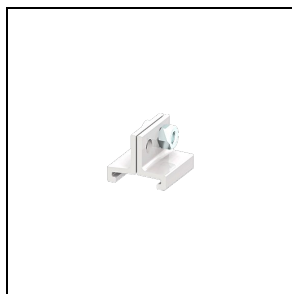


310728

Long suspension clamp for use with through joint (100 mm)

WH-RAL9010 / White RAL9010

S-9000/313



310655

Short suspension clamp (25 mm)

WH-RAL9010 / White RAL9010

S-9000/333

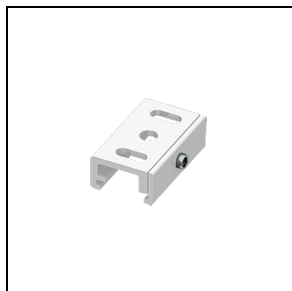


310730

Long suspension clamp (180 mm)

☐ WH-RAL9010 / White RAL9010

S-9000/131

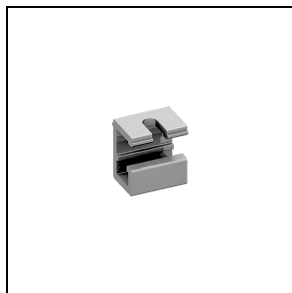


310698

Ceiling-mounting clamp

☐ WH-RAL9010 / White RAL9010

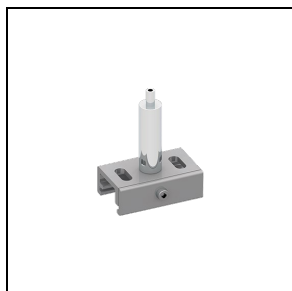
S-9000/132



310642

Ceiling-mounting clamp for
suspensions

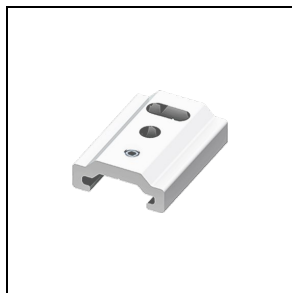
9000/231



310740

Clamp with automatic tensioner

9000/312-LA



311048

Short suspension clamp with hole for automatic tensioner (35 mm)

■ WH-RAL9010 / White RAL9010

9000/312-SV

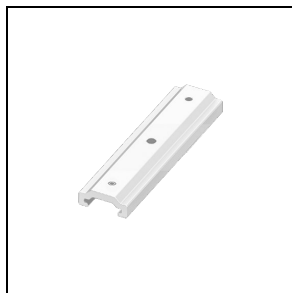


311051

Short suspension clamp with hole for cable with ball terminal (35 mm)

■ WH-RAL9010 / White RAL9010

9000/322-LA

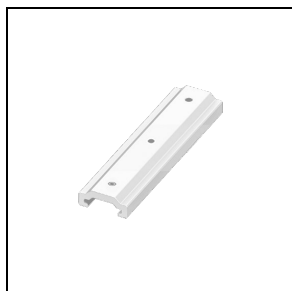


311054

Medium suspension clamp with hole for automatic tensioner (100 mm)

■ WH-RAL9010 / White RAL9010

9000/322-SV

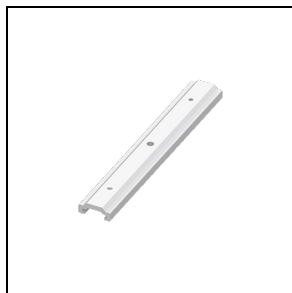


311057

Medium suspension clamp with hole for cable with ball terminal (100 mm)

■ WH-RAL9010 / White RAL9010

9000/332-LA

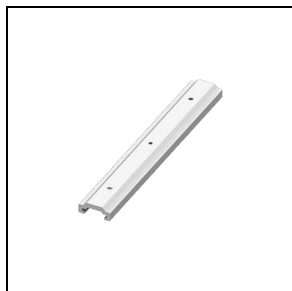


310738

Long suspension clamp with hole for automatic tensioner for use with through joint (180 mm)

■ WH-RAL9010 / White RAL9010

9000/332-SV

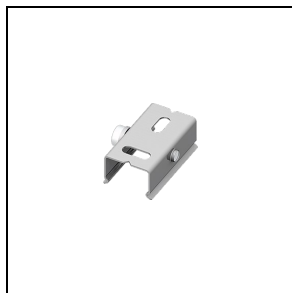


311077

Long suspension clamp with hole for cable with ball terminal for use with through joint (180 mm)

■ WH-RAL9010 / White RAL9010

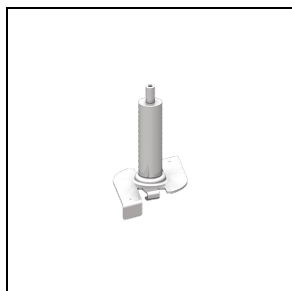
S-9000/111



310625

Steel clip for mounting on ceiling

S-9000/114-T



310744

Clip with automatic tensioner for quick mounting

■ WH-RAL9010 / White RAL9010

S-9000/115

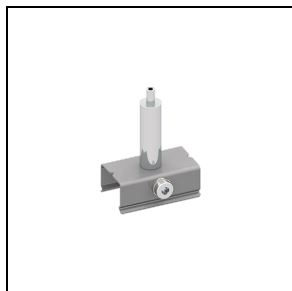


310651

Clip for quick mounting

☐ WH-RAL9010 / White RAL9010

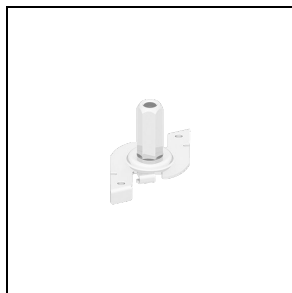
S-9000/116



310699

Clamp with automatic tensioner

S-9000/118

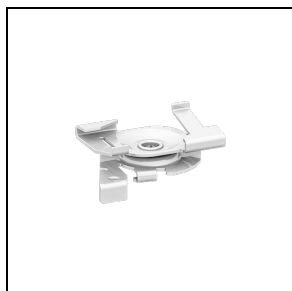


310696

Clip for quick mounting with M6 tensioner

☐ WH-RAL9010 / White RAL9010

S-9000/119-TB

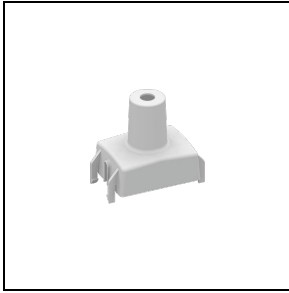


310689

Clip for quick mounting of track on T-bar

☐ WH-RAL9010 / White RAL9010

S-9000/5



310613

Plastic cover for clips and clamps

■ WH-RAL9010 / White RAL9010

9000/211



310634

Steel cable (Ø 1.5 mm - 1.5 m length)



310643

Steel cable (Ø 1.5 mm - 2 m length)



310657

Steel cable (Ø 1.5 mm - 3 m length)



310718

Steel cable (Ø 1.5 mm - 5 m length)

9000/211-S



310647

Steel cable (Ø 1.5 mm - 1.5 m length)
with ball terminal



310658

Steel cable (Ø 1.5 mm - 2 m length)
with ball terminal



310668

Steel cable (Ø 1.5 mm - 3 m length)
with ball terminal



310726

Steel cable (Ø 1.5 mm - 5 m length)
with ball terminal

To maintain the regular updating of our products, PERFORMANCE IN LIGHTING reserves the right to make changes without prior notice. For the most up to date information we always recommend you read the latest version published on the website www.performanceinlighting.com. Delivered luminaire lumen outputs and power consumptions, including losses, are subject to a tolerance of +/- 7%, and unless otherwise stated the values apply to an ambient temperature of 25°C. Terms of warranty are available at <https://www.performanceinlighting.com/qr/company/led-warranty>



310741

Steel cable (Ø 1.5 mm - 6 m length)
with ball terminal

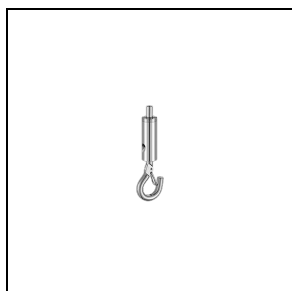
9000/218



310665

M5 automatic tensioner with lateral
hole, in chromed brass

9000/213



310671

Automatic hook tensioner, in nickel-
plated brass

9000/214

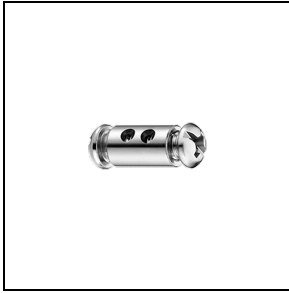


310693

Automatic locking tensioner, in nickel-
plated brass

9000/215

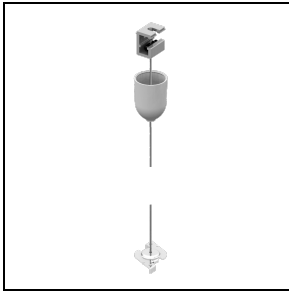
To maintain the regular updating of our products, PERFORMANCE IN LIGHTING reserves the right to make changes without prior notice. For the most up to date information we always recommend you read the latest version published on the website www.performanceinlighting.com. Delivered luminaire lumen outputs and power consumptions, including losses, are subject to a tolerance of +/- 7%, and unless otherwise stated the values apply to an ambient temperature of 25°C. Terms of warranty are available at <https://www.performanceinlighting.com/qr/company/led-warranty>



310619

Screw tensioner, in nickel-plated brass

9000-KIT2 - 1,5 m

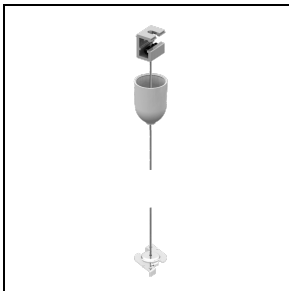


310778

Bracket for mounting on ceiling, screw tensioner, plastic ceiling rose, Ø 15 mm 1.5 m-long steel cable with ball end, clip for quick mounting

■ WH-RAL9010 / White RAL9010

9000-KIT2 - 3 m

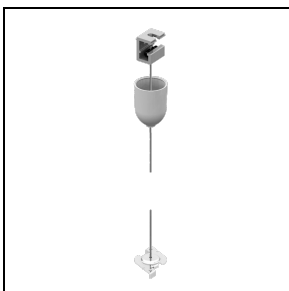


310787

Ceiling-mounting bracket, screw tensioner, plastic ceiling rose, Ø 15 mm 3 m-long steel cable with ball end, clip for quick mounting

■ WH-RAL9010 / White RAL9010

9000-KIT2 - 5 m

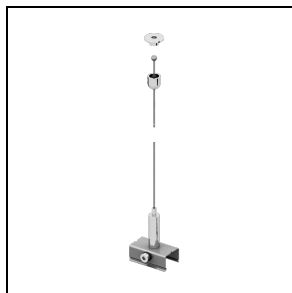


310813

Bracket for mounting on ceiling, screw tensioner, plastic ceiling rose, Ø 15 mm 5 m-long steel cable with ball end, clip for quick mounting

■ WH-RAL9010 / White RAL9010

9000-KIT4 - 1,5 m



310801

Metal ball ceiling rose with hole, Ø 1.5 mm 1.5 m-long steel cable with ball end, with automatic tensioner

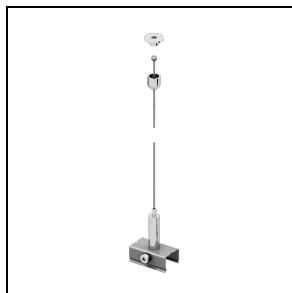
9000-KIT4 - 3 m



310805

Metal ball ceiling rose with hole, Ø 1.5 mm 3 m-long steel cable with ball end, with automatic tensioner

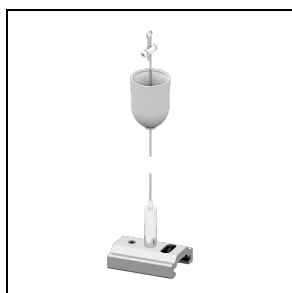
9000-KIT4 - 5 m



310831

Metal ball ceiling rose with hole, Ø 1.5 mm 5 m-long steel cable with ball end, with automatic tensioner

9000-KIT6 - 1,5 m

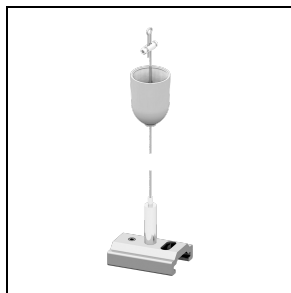


310781

Screw tensioner, plastic ceiling rose, Ø 1.5 mm 1.5 m-long steel cable with ball end, bracket with milled hole and automatic tensioner

WH-RAL9010 / White RAL9010

9000-KIT6 - 3 m

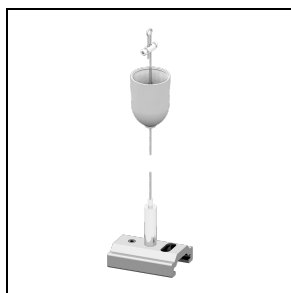


310794

Screw tensioner, plastic ceiling rose, Ø 1,5 mm 3 m-long steel cable with ball end, bracket with milled hole and automatic tensioner

☐ WH-RAL9010 / White RAL9010

9000-KIT6 - 5 m

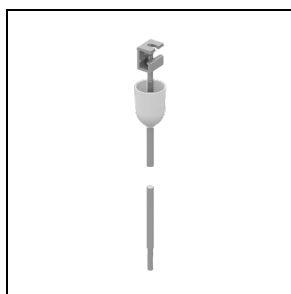


310810

Screw tensioner, plastic ceiling rose, Ø 1,5 mm 5 m-long steel cable with ball end, bracket with milled hole and automatic tensioner

☐ WH-RAL9010 / White RAL9010

9000-P3-KIT4 - 1 m

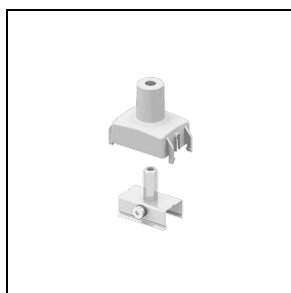


310770

Bracket for mounting on ceiling, M6 nut, plastic ceiling rose, M6 1 m-long threaded bar with cover sheath

☐ WH-RAL9010 / White RAL9010

9000-P2



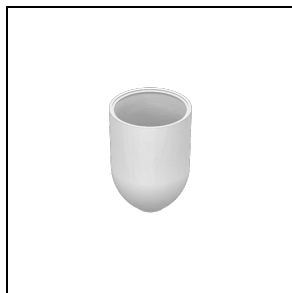
310736

Bracket with M6 tensioner and plastic cover

☐ WH-RAL9010 / White RAL9010

9000/3

To maintain the regular updating of our products, PERFORMANCE IN LIGHTING reserves the right to make changes without prior notice. For the most up to date information we always recommend you read the latest version published on the website www.performanceinlighting.com. Delivered luminaire lumen outputs and power consumptions, including losses, are subject to a tolerance of +/- 7%, and unless otherwise stated the values apply to an ambient temperature of 25°C. Terms of warranty are available at <https://www.performanceinlighting.com/qr/company/led-warranty>

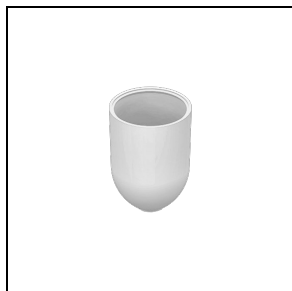


310603

Plastic ceiling rose for Ø 1.5 mm steel cable

☐ WH-RAL9010 / White RAL9010

9000/4



310606

Plastic ceiling rose for threaded bar in M6 steel

☐ WH-RAL9010 / White RAL9010

9000/216



310644

Metal ball ceiling rose with hole

9009



310751

6-Conductor DALI adapter (3-phase + control system) (maximum load 100 N = 10.2 kg)

☐ WH-RAL9010 / White RAL9010

9009-4



310725

4-Conductor adapter (3-phase)
(maximum load 100 N = 10.2 kg)

WH-RAL9010 / White RAL9010

S-9209



310764

Asymmetric 6-conductor Dali adapter
(3-phase + control system) (maximum
load 100 N = 10.2 kg)

WH-RAL9010 / White RAL9010

9209-4

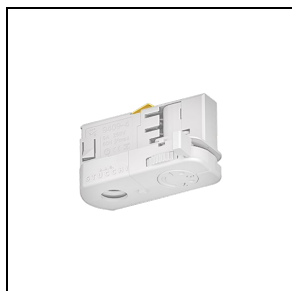


310737

Asymmetric 4-conductor adapter (3-
phase) (maximum load 100 N = 10.2 kg)

WH-RAL9010 / White RAL9010

9409-4



311060

Asymmetric 4-conductor adapter (3-
phase) (maximum load 50 N = 5.1 kg)

WH-RAL9010 / White RAL9010

9409-4-DRI

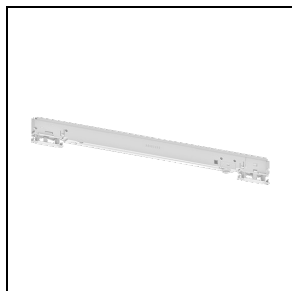


311063

Compact 4-conductor adapter with integrated driver (3-phase) (100-850 mA - max. 40 VDC)

WH-RAL9010 / White RAL9010

9909-4-DRI

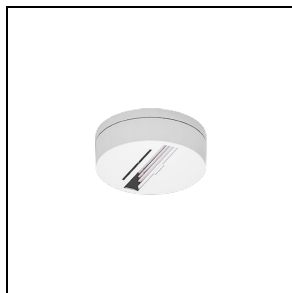


310888

Integrated 4-conductor adapter with integrated driver (3-phase) (100-850 mA - max. 40 VDC)

WH-RAL9010 / White RAL9010

9000/BP-D



310845

Adapter ceiling-mounting base (without using the track)

WH-RAL9010 / White RAL9010

9000/BR

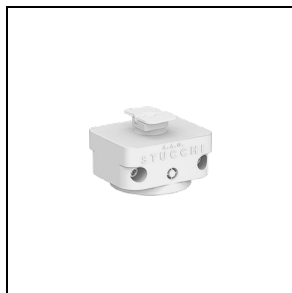


310830

Adapter suspended ceiling-mounting base (without using the track)

WH-RAL9010 / White RAL9010

S-9000/M



310678

Mechanical adapter

☐ WH-RAL9010 / White RAL9010

S-g000/BC

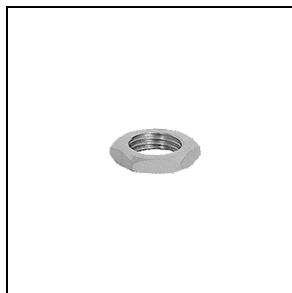


310624

External cable clamp with plastic grub screw

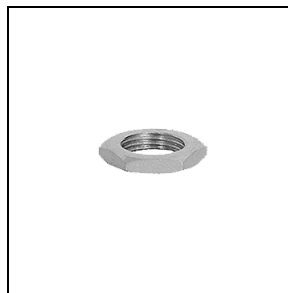
☐ WH-RAL9010 / White RAL9010

S-g000/D



310609

Nut for M10 connector



310610

Nut for M13 connector

g009/IP40

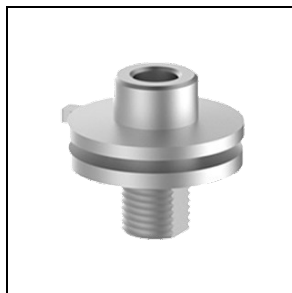


310592

IP40 Housing for symmetrical adapter

☐ WH-RAL9010 / White RAL9010

S-g000

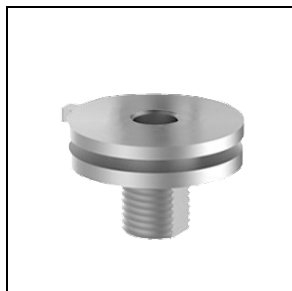


310638
Aluminium M10 connector for adapter



310639
Aluminium M13 connector for adapter

S-g000/SC



310662
Aluminium M10 connector without collar for adapter



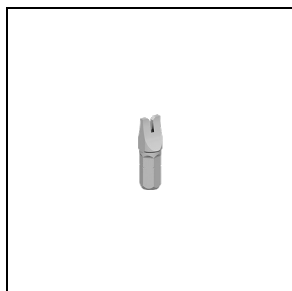
310663
Aluminium M13 connector without collar for adapter

S-g000/FI



310648
Aluminium M10 connector with internal thread for adapter

g009/T-INS



310862
Adapter wiring insert

g009/T-HAN



310846

Handle for adapter wiring insert

9009/10



310586

Internal cable clamp for symmetrical adapter

WH-RAL9010 / White RAL9010

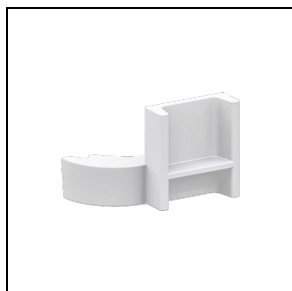
9009/51



310656

Aluminium ring with block grub screw to prevent twisting of adapter connectors

9209/IP40

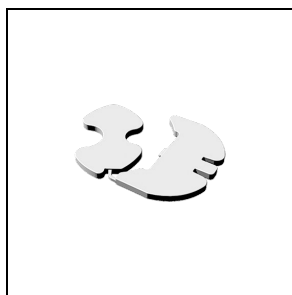


310593

IP40 Housing for asymmetrical adapter

WH-RAL9010 / White RAL9010

9209/20

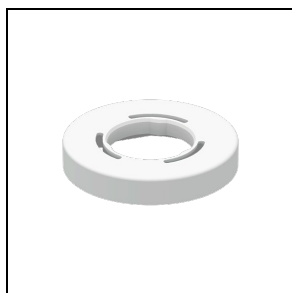


310587

Internal cable clamp for asymmetrical adapter

■ WH-RAL9010 / White RAL9010

9909-DRI/11

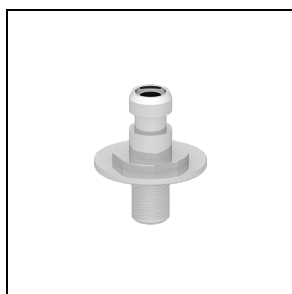


310600

Plastic friction ring for retractable adapter

■ WH-RAL9010 / White RAL9010

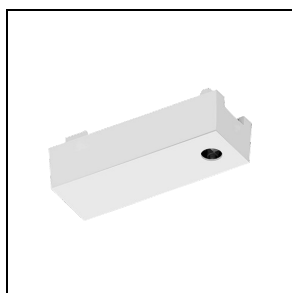
9909/M10



310731

M10 Terminal for retractable adapter

9209/BD-M

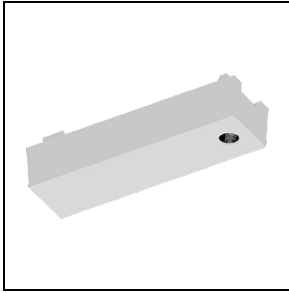


310720

LED driver box. For use with asymmetrical adaptor 9209... Max. size for driver housing: 116x52x30 mm

■ WH-RAL9010 / White RAL9010

9209/BD-L



310724

LED driver box. For use with asymmetrical adaptor 9209... Max. size for driver housing: 116x52x30 mm

■ WH-RAL9010 / White RAL9010

9209-BD/3



310608

Plastic cover and screws for LED driver box connectors

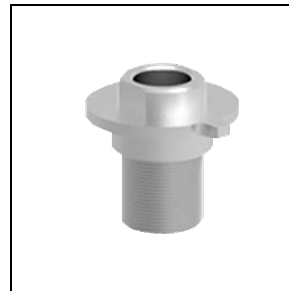
■ WH-RAL9010 / White RAL9010

9209-BD



310669

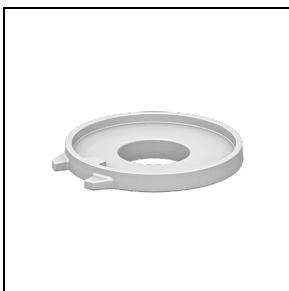
Aluminium M10 connector for LED driver box



310670

Aluminium M13 connector for LED driver box

9209-BD-10/4

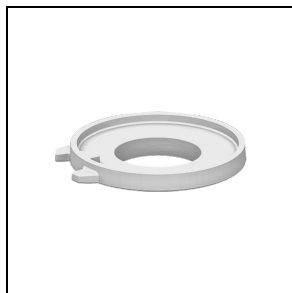


310595

Adapter for M10 connector for LED driver box

■ WH-RAL9010 / White RAL9010

9209-BD-13/4



310597

Adapter for M13 connector for LED driver box

WH-RAL9010 / White RAL9010

DRV BX KIT-BD/M10



310708

Kit for LED driver box - complete set for M10 mounting

WH-RAL9010 / White RAL9010

DRV BX KIT-BD/M13

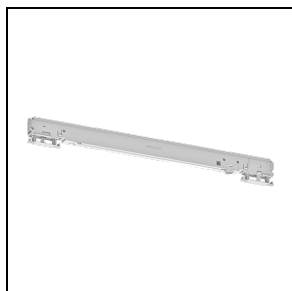


310710

Kit for LED driver box - complete set for M13 mounting

WH-RAL9010 / White RAL9010

9909-DRI



310897

Integrated 6-conductor DALI adapter with integrated driver (3-phase + control system) (350-500 mA - max. 50 VDC)

WH-RAL9010 / White RAL9010