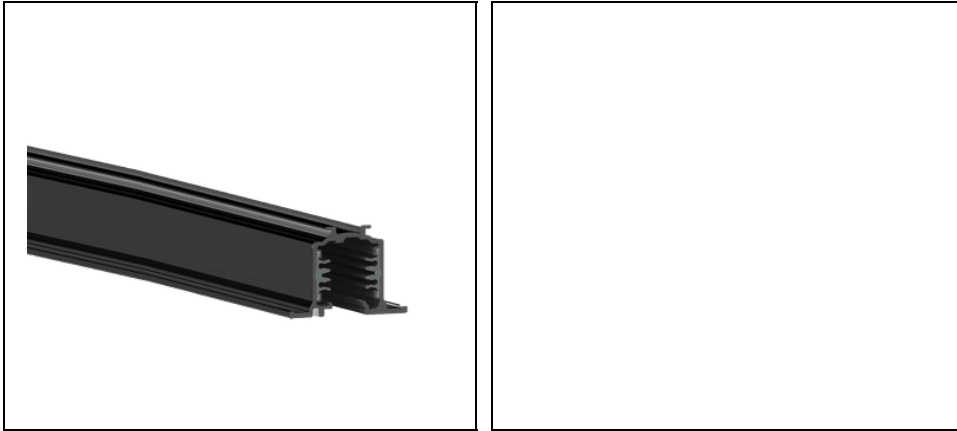


OTR TRACKS RAILS RECESSED

Part number 310892



Description

The track system with 3 switches is a complete installation system designed for stores, hypermarkets, public facilities, museums

- All designs can be easily implemented, and assembly is facilitated by the use of tracks and standard accessories
- Designed for exposed, recessed or suspension installation, and the luminaires can be easily moved, changed or modified
- The indication "earthing conductor on the right, left, inside or outside" for power supply units, corner and T- derivations are based on the earthing conductor's position on the track. The position of the earthing conductor on the track depends on the visual direction. The visual direction follows the operating direction of the system on the cross cup of the track that opens downwards
- Compatible with 3F "standard" adaptors that do not use DIM
- The OTR binary system is a mixed three-phase system with two additional conductors for the management of any signal (e.g. DIM 1-10 V, DALI, DMX, LON, EIB, etc)

To maintain the regular updating of our products, PERFORMANCE IN LIGHTING reserves the right to make changes without prior notice. For the most up to date information we always recommend you read the latest version published on the website www.performanceinlighting.com. Delivered luminaire lumen outputs and power consumptions, including losses, are subject to a tolerance of +/- 7%, and unless otherwise stated the values apply to an ambient temperature of 25°C. Terms of warranty are available at <https://www.performanceinlighting.com/qr/company/led-warranty>

Product data

ETIM Group:	EG000030	ETIM Class:	EC000101
-------------	----------	-------------	----------

General information

Light source:		Colour / Finishing:	BK-81 / Black / Textured
Optic:	-	Net weight [kg]:	3.41
Overall length [mm]:	3000	Overall width [mm]:	52
Overall height [mm]:	38		

Installation

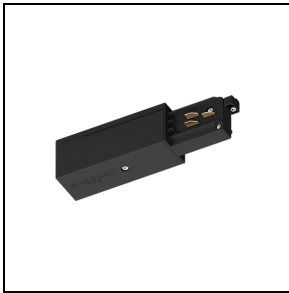
Application area:	Indoor lighting	Mounting type:	Tracklight
Min. ambient temperature [°C]:	0		

Light features

To maintain the regular updating of our products, PERFORMANCE IN LIGHTING reserves the right to make changes without prior notice. For the most up to date information we always recommend you read the latest version published on the website www.performanceinlighting.com. Delivered luminaire lumen outputs and power consumptions, including losses, are subject to a tolerance of +/- 7%, and unless otherwise stated the values apply to an ambient temperature of 25°C. Terms of warranty are available at <https://www.performanceinlighting.com/qr/company/led-warranty>

Mandatory accessories

9001 - OTR END - FEED RIGHT

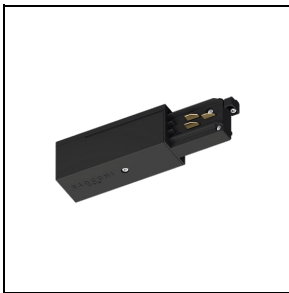


310752

Feeder - L - right mechanical wrench
/ left grounding

■ BK-RAL9005 / Black RAL9005

9002 - OTR END - FEED LEFT



310753

Feeder - R - right mechanical wrench
/ right grounding

■ BK-RAL9005 / Black RAL9005

9003 - OTR TK CONNECTOR



310711

Through joint

■ BK-RAL9005 / Black RAL9005

9003-M - OTR TK CONNECTOR ONLY MECHA



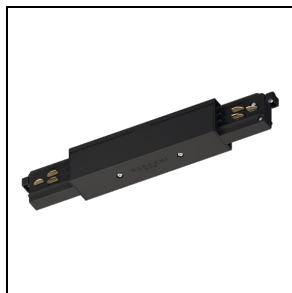
310664

Insulating connection

■ BK-RAL9005 / Black RAL9005

9010 - OTR MIDDLE-FEED

To maintain the regular updating of our products, PERFORMANCE IN LIGHTING reserves the right to make changes without prior notice. For the most up to date information we always recommend you read the latest version published on the website www.performanceinlighting.com. Delivered luminaire lumen outputs and power consumptions, including losses, are subject to a tolerance of +/- 7%, and unless otherwise stated the values apply to an ambient temperature of 25°C. Terms of warranty are available at <https://www.performanceinlighting.com/qr/company/led-warranty>



310818

Direct joint

■ BK-RAL9005 / Black RAL9005

9018 - OTR FLEXIBLE CORNER



310847

Flexible joint

■ BK-RAL9005 / Black RAL9005

9011 - OTR L - FEED INT



310823

L-shaped joint - internal mechanical
wrench / external grounding

■ BK-RAL9005 / Black RAL9005

9012 - OTR L - FEED EXT



310824

L-shaped joint - external mechanical
wrench / internal grounding

■ BK-RAL9005 / Black RAL9005

9013 - OTR T - FEED EXT LEFT



310850

T-shaped joint - left mechanical wrench / right grounding

■ BK-RAL9005 / Black RAL9005

9014 - OTR T - FEED EXT RIGHT



310851

T-shaped joint - right external mechanical wrench / left internal grounding

■ BK-RAL9005 / Black RAL9005

9015 - OTR T - FEED INT LEFT



310852

T-shaped joint - left internal mechanical wrench / right external grounding

■ BK-RAL9005 / Black RAL9005

9016 - OTR T - FEED INT RIGHT

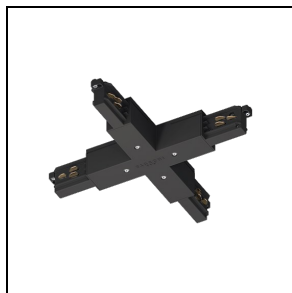


310853

T-shaped joint - right internal mechanical wrench / left external grounding

■ BK-RAL9005 / Black RAL9005

9017 - OTR X - FEED

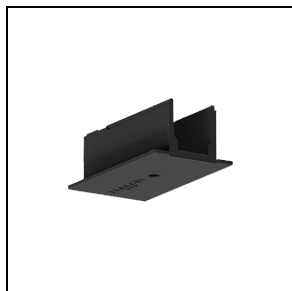


310873

X-shaped joint

■ BK-RAL9005 / Black RAL9005

9001 - R/6

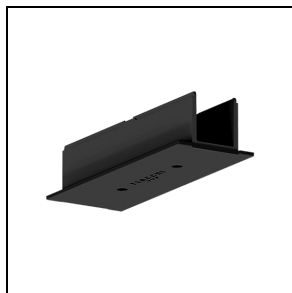


310672

Suspended ceiling cover for head

■ BK-RAL9005 / Black RAL9005

9010-R/6

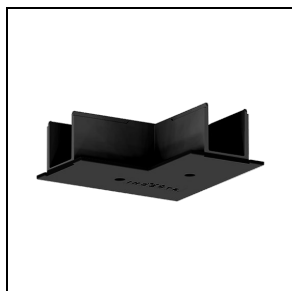


310675

Suspended ceiling cover for direct joint

■ BK-RAL9005 / Black RAL9005

9011 - R/6

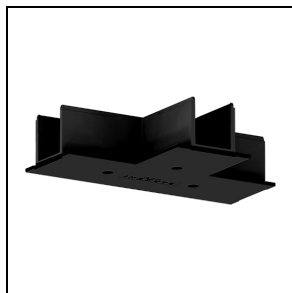


310681

Suspended ceiling cover for L-shaped joint

■ BK-RAL9005 / Black RAL9005

9013 - R/6

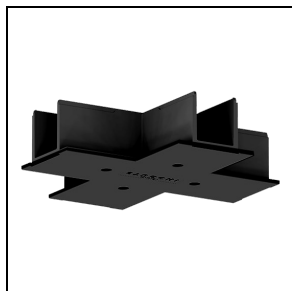


310690

Suspended ceiling cover for T-shaped joint

■ BK-RAL9005 / Black RAL9005

9017 - R/6

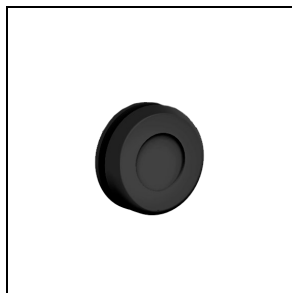


310700

Suspended ceiling cover for X-shaped joint

■ BK-RAL9005 / Black RAL9005

9001 /115



310580

Gasket for feeder

■ BK-RAL9005 / Black RAL9005

9004-R



310616

Suspended ceiling closing cap with locking screw

■ BK-RAL9005 / Black RAL9005

9000/H

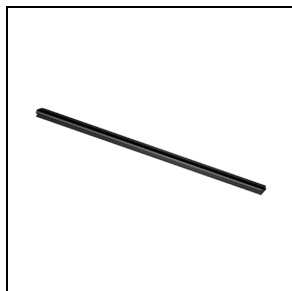


310628

Suspension hook

■ BK-RAL9005 / Black RAL9005

S-9000/GP

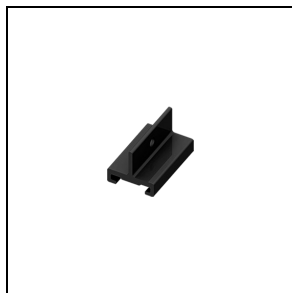


310635

Additional protective sheath (1 m)

■ BK-RAL9005 / Black RAL9005

S-9000/113



310652

Short suspension clamp (40 mm)

■ BK-RAL9005 / Black RAL9005

S-9000/123

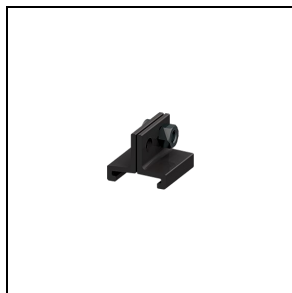


310727

Long suspension clamp for use with through joint (100 mm)

■ BK-RAL9005 / Black RAL9005

S-9000/313

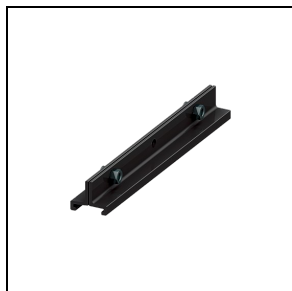


310654

Short suspension clamp (25 mm)

■ BK-RAL9005 / Black RAL9005

S-9000/333

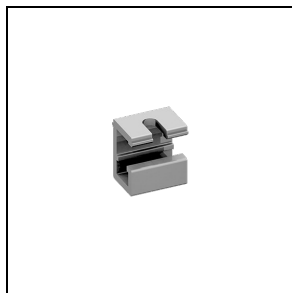


310729

Long suspension clamp (180 mm)

■ BK-RAL9005 / Black RAL9005

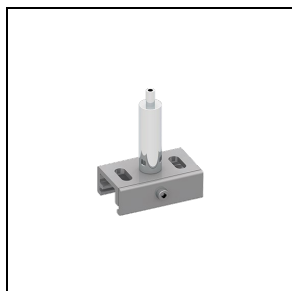
S-9000/132



310642

Ceiling-mounting clamp for
suspensions

9000/231



310740

Clamp with automatic tensioner

9000/312-LA

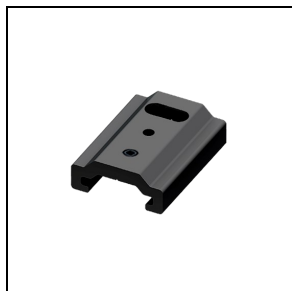


311046

Short suspension clamp with hole for automatic tensioner (35 mm)

■ BK-RAL9005 / Black RAL9005

9000/312-SV

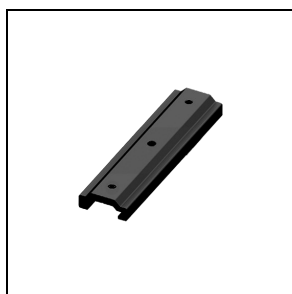


311049

Short suspension clamp with hole for cable with ball terminal (35 mm)

■ BK-RAL9005 / Black RAL9005

9000/322-LA

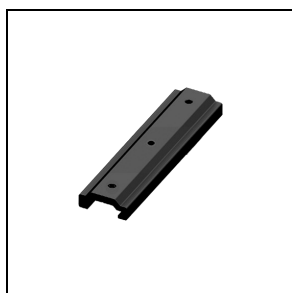


311052

Medium suspension clamp with hole for automatic tensioner (100 mm)

■ BK-RAL9005 / Black RAL9005

9000/322-SV

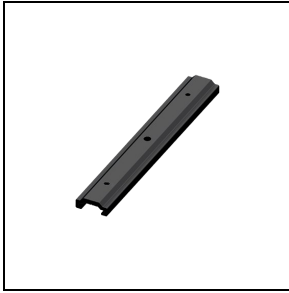


311055

Medium suspension clamp with hole for cable with ball terminal (100 mm)

■ BK-RAL9005 / Black RAL9005

9000/332-LA

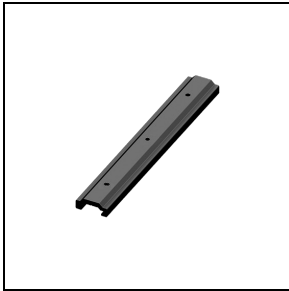


310754

Long suspension clamp with hole for automatic tensioner for use with through joint (180 mm)

■ BK-RAL9005 / Black RAL9005

9000/332-SV



311078

Long suspension clamp with hole for cable with ball terminal for use with through joint (180 mm)

■ BK-RAL9005 / Black RAL9005

9000-KIT4 - 1,5 m



310801

Metal ball ceiling rose with hole, Ø 1.5 mm 1.5 m-long steel cable with ball end, with automatic tensioner

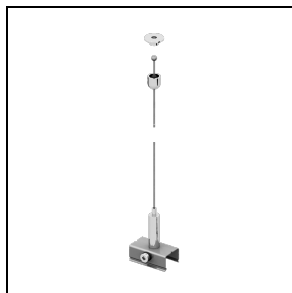
9000-KIT4 - 3 m



310805

Metal ball ceiling rose with hole, Ø 1.5 mm 3 m-long steel cable with ball end, with automatic tensioner

9000-KIT4 - 5 m



310831

Metal ball ceiling rose with hole, Ø 1.5 mm 5 m-long steel cable with ball end, with automatic tensioner

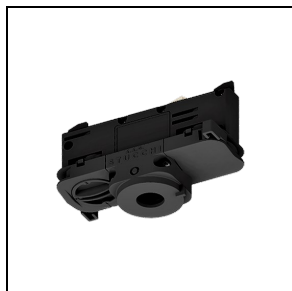
9000/216



310644

Metal ball ceiling rose with hole

9009



310749

6-Conductor DALI adapter (3-phase + control system) (maximum load 100 N - 10.2 kg)

■ BK-RAL9005 / Black RAL9005

9009-4



310721

4-Conductor adapter (3-phase) (maximum load 100 N - 10.2 kg)

■ BK-RAL9005 / Black RAL9005

S-9209



310757

Asymmetric 6-conductor Dali adapter (3-phase + control system) (maximum load 100 N = 10.2 kg)

■ BK-RAL9005 / Black RAL9005

9209-4



310732

Asymmetric 4-conductor adapter (3-phase) (maximum load 100 N = 10.2 kg)

■ BK-RAL9005 / Black RAL9005

9409-4

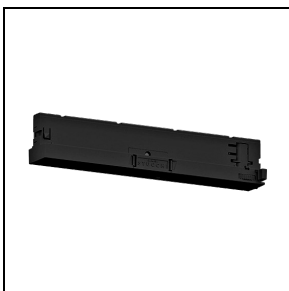


311058

Asymmetric 4-conductor adapter (3-phase) (maximum load 50 N = 5.1 kg)

■ BK-RAL9005 / Black RAL9005

9409-4-DRI



311061

Compact 4-conductor adapter with integrated driver (3-phase) (100-850 mA - max. 40 VDC)

■ BK-RAL9005 / Black RAL9005

9909-4-DRI



310886

Integrated 4-conductor adapter with integrated driver (3-phase) (100-850 mA - max. 40 VDC)

■ BK-RAL9005 / Black RAL9005

9000/BR

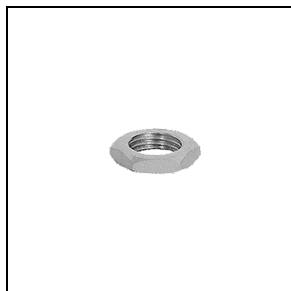


310828

Adapter suspended ceiling-mounting base (without using the track)

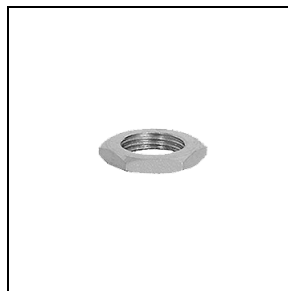
■ BK-RAL9005 / Black RAL9005

S-9000/D



310609

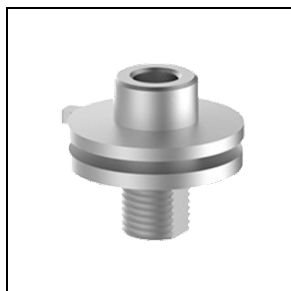
Nut for M10 connector



310610

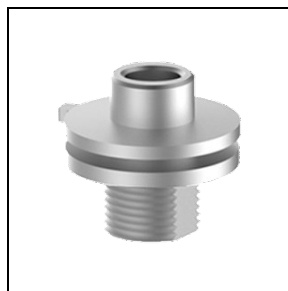
Nut for M13 connector

S-9000



310638

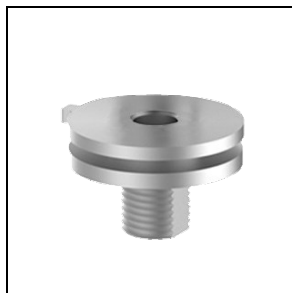
Aluminium M10 connector for adapter



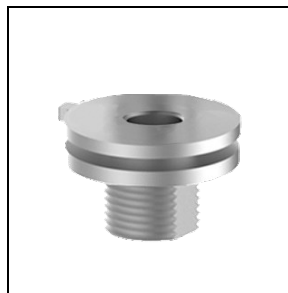
310639

Aluminium M13 connector for adapter

S-9000/SC



310662
Aluminium M10 connector without collar for adapter



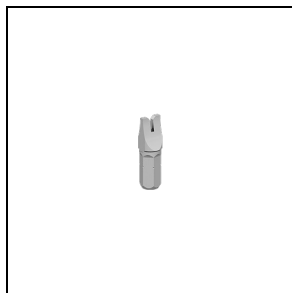
310663
Aluminium M13 connector without collar for adapter

S-g000/FI



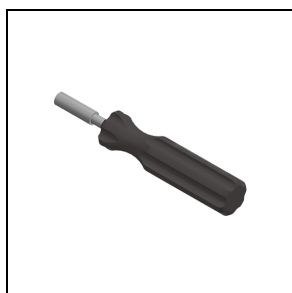
310648
Aluminium M10 connector with internal thread for adapter

9009/T-INS



310862
Adapter wiring insert

9009/T-HAN



310846
Handle for adapter wiring insert

9009/51



310656

Aluminium ring with block grub screw to prevent twisting of adapter connectors

9209/IP40

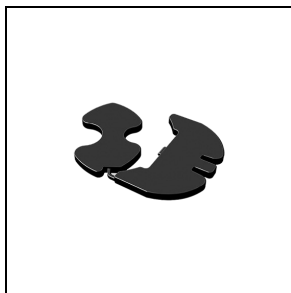


310589

IP40 Housing for asymmetrical adapter

■ BK-RAL9005 / Black RAL9005

9209/20

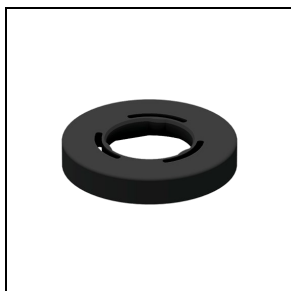


310583

Internal cable clamp for asymmetrical adapter

■ BK-RAL9005 / Black RAL9005

9909-DRI/11

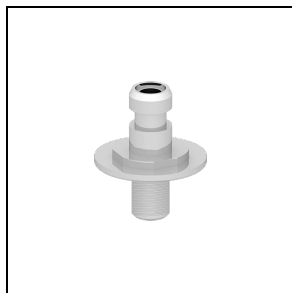


310598

Plastic friction ring for retractable adapter

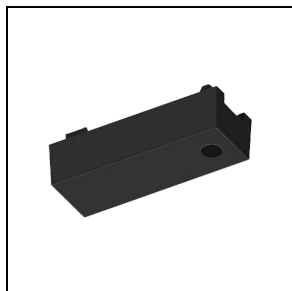
■ BK-RAL9005 / Black RAL9005

9909/M10



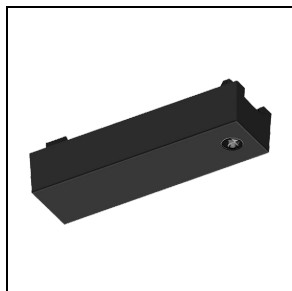
310731
M10 Terminal for retractable adapter

9209/BD-M



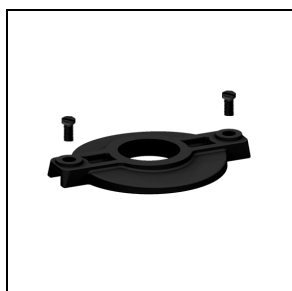
310719
LED driver box. For use with asymmetrical adaptor 9209... Max. size for driver housing: 116x52x30 mm
■ BK-RAL9005 / Black RAL9005

9209/BD-L



310723
LED driver box. For use with asymmetrical adaptor 9209... Max. size for driver housing: 116x52x30 mm
■ BK-RAL9005 / Black RAL9005

9209-BD/3

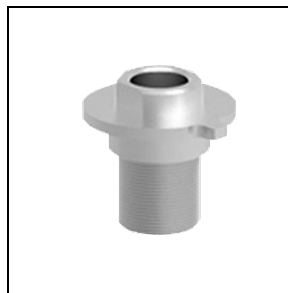


310607
Plastic cover and screws for LED driver box connectors
■ BK-RAL9005 / Black RAL9005

9209-BD



310669
Aluminium M10 connector for LED driver box



310670
Aluminium M13 connector for LED driver box

9209-BD-10/4



310594
Adapter for M10 connector for LED driver box
■ BK-RAL9005 / Black RAL9005

9209-BD-13/4



310596
Adapter for M13 connector for LED driver box
■ BK-RAL9005 / Black RAL9005

DRV BX KIT-BD/M10



310707
Kit for LED driver box - complete set for M10 mounting
■ BK-RAL9005 / Black RAL9005

DRV BX KIT-BD/M13



310709

Kit for LED driver box - complete set
for M13 mounting

■ BK-RAL9005 / Black RAL9005

9909-DRI



310895

Integrated 6-conductor DALI adapter
with integrated driver (3-phase +
control system) (350-500 mA - max. 50
VDC)

■ BK-RAL9005 / Black RAL9005