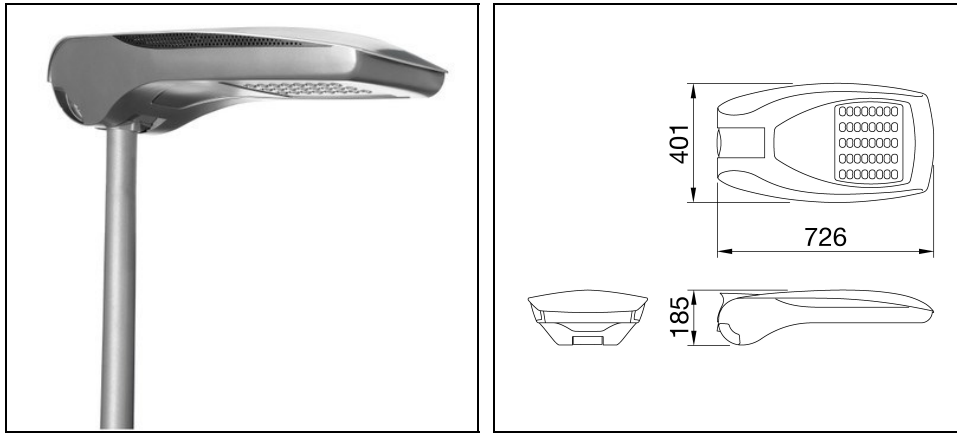


STREET [O3] ST1

Part number GW87532



Description

Street lighting device consisting of cover, frame and pole attachment in aluminium with low copper content die-casting:

- PA6 side ventilation grills
- Powder polyester coated after pre-treatment for increased corrosion resistance
- Common mode surge protection up to 12kV according to IEC EN 61000-4-5 (issued by a third party) without the aid of additional protective devices
- Optical system made with methacrylate lens, consisting of several different lenses that, with a single photometric distribution, and varying the installation parameters and the number of motors installed, allows the achievement of the obligatory road requirements
- It can be used up to 50°C of ambient temperature but with reduced currents as indicated in the instruction manual

To maintain the regular updating of our products, PERFORMANCE in LIGHTING reserves the right to make changes without prior notice. For the most up to date information we always recommend you read the latest version published on the website www.performanceinlighting.com. Delivered luminaire lumen outputs and power consumptions, including losses, are subject to a tolerance of +/- 7%, and unless otherwise stated the values apply to an ambient temperature of 25°C. Terms of warranty are available at <https://www.performanceinlighting.com/qr/company/led-warranty>

Product data

ETIM Group:	EG000027	ETIM Class:	EC000062
-------------	----------	-------------	----------

General information

Lampholder:	LED	Light source:	LED
Luminaire lumen output [lm]:	8590	Luminaire wattage [W]:	81 W
Luminous efficacy [lm/W]:	106	CRI:	70
Colour temperature [K]:	4000	Colour / Finishing:	Graphite grey / Graphite grey
IP degree of protection:	IP66	Impact resistance / impact energy:	IK08 5J xx5
Protection class:	II	Optic:	ST1 - Street
Net weight [kg]:	10.78	Overall length [mm]:	726
Overall width [mm]:	401	Overall height [mm]:	185

Mechanical features

Housing material:	Aluminium	Diffuser material:	Glass
-------------------	-----------	--------------------	-------

Electrical features

Voltage type:	AC	Input voltage [V AC]:	220/240
Input frequency [Hz]:	50/60		

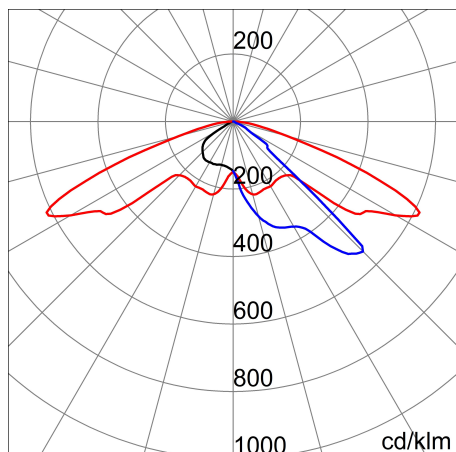
Installation

Application area:	Outdoor	Mounting type:	Streetlight
Min. ambient temperature [°C]:	-25	Max. ambient temperature [°C]:	50

Light features

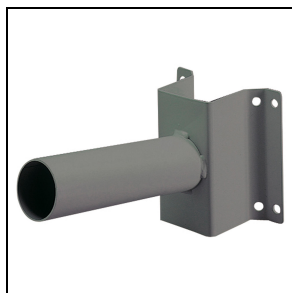
Distribution of light emission:	Direct
---------------------------------	--------

Photometric data



Optional accessories

STREET [O3]



GW86167

Wall-mounting bracket 150x160x290 mm - graphite grey

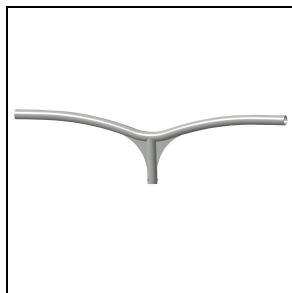
■ Graphite grey / Graphite grey



GW87581

Single pole head bracket 1 m - graphite grey

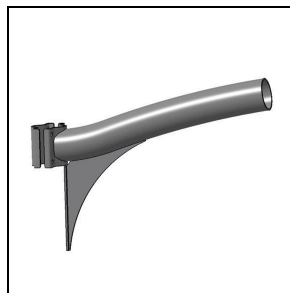
■ Graphite grey / Graphite grey



GW87582

Double pole head bracket 1*1 m - graphite grey

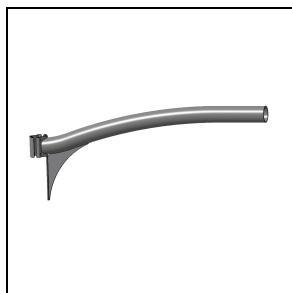
■ Graphite grey / Graphite grey



GW87587

Short bracket 0.5 m - graphite grey

■ Graphite grey / Graphite grey



GW87586

Long bracket 1 m - graphite grey

■ Graphite grey / Graphite grey



GW84096

Conical pole painted h = 5.5 m - graphite grey

■ Graphite grey / Graphite grey

To maintain the regular updating of our products, PERFORMANCE in LIGHTING reserves the right to make changes without prior notice. For the most up to date information we always recommend you read the latest version published on the website www.performanceinlighting.com. Delivered luminaire lumen outputs and power consumptions, including losses, are subject to a tolerance of +/- 7%, and unless otherwise stated the values apply to an ambient temperature of 25°C. Terms of warranty are available at <https://www.performanceinlighting.com/qr/company/led-warranty>



GW87591

Conical pole painted h = 6.8 m -
graphite grey

■ Graphite grey / Graphite grey



GW84097

Conical pole painted h = 7.8 m -
graphite grey

■ Graphite grey / Graphite grey



GW87592

Conical pole painted h = 8.8 m -
graphite grey

■ Graphite grey / Graphite grey



GW87593

Conical pole painted h = 9.8 m -
graphite grey

■ Graphite grey / Graphite grey

To maintain the regular updating of our products, PERFORMANCE iN LIGHTING reserves the right to make changes without prior notice. For the most up to date information we always recommend you read the latest version published on the website www.performanceinlighting.com. Delivered luminaire lumen outputs and power consumptions, including losses, are subject to a tolerance of +/- 7%, and unless otherwise stated the values apply to an ambient temperature of 25°C. Terms of warranty are available at <https://www.performanceinlighting.com/qr/company/led-warranty>