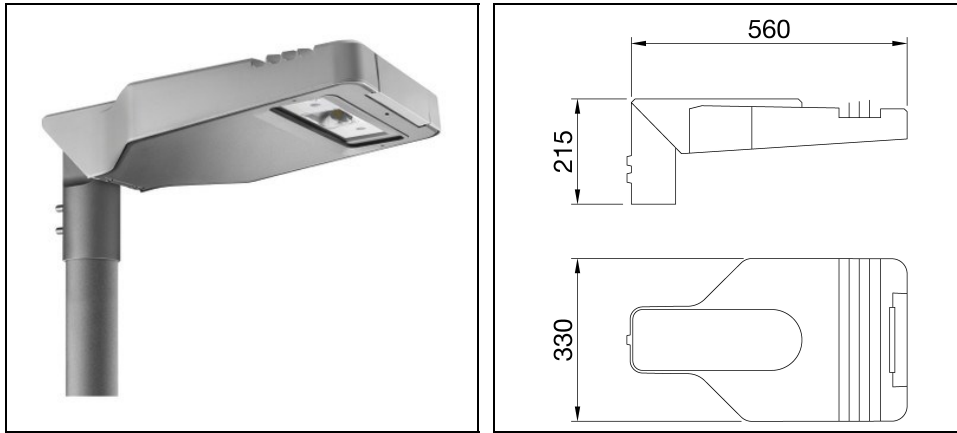


ROAD [5] MINI 1X3 LED HUGE

Part number GWR5111B



Description

Street lighting device with cover, frame, and pole attachment in EN AB 46100 die-cast aluminium with low copper content:

- Polyester powder coated
- High-power LED
- Printed Circuit Board (PCB) in metal core
- Common mode surge protection up to 10kV
- With safety switch
- Cable plate in PA6.6 + glass fiber
- Cable input via PG13.5 cable gland
- High reflective aluminium optical system
- Tempered flat glass with 4 mm thickness
- Opening and closing system with integrated front handle
- It can be used up to 50°C of ambient temperature but with reduced currents as indicated in the instruction manual
- Suitable for installation both on top of the pole and offset with 5° pitch adjustment
- L90B10 (Tq 25°C) > 115.000 h; L90B10 (Tq 40°C) = 115.000 h

To maintain the regular updating of our products, PERFORMANCE in LIGHTING reserves the right to make changes without prior notice. For the most up to date information we always recommend you read the latest version published on the website www.performanceinlighting.com. Delivered luminaire lumen outputs and power consumptions, including losses, are subject to a tolerance of +/- 7%, and unless otherwise stated the values apply to an ambient temperature of 25°C. Terms of warranty are available at <https://www.performanceinlighting.com/qr/company/led-warranty>

Product data

ETIM Group:	EG000027	ETIM Class:	EC000062
-------------	----------	-------------	----------

General information

Lampholder:	LED	Light source:	LED
Luminaire lumen output [lm]:	4700	Luminaire wattage [W]:	37 W
Luminous efficacy [lm/W]:	127	CRI:	70
Colour temperature [K]:	4000	Colour / Finishing:	GR-RAL9006 / Grey RAL9006
IP degree of protection:	IP66	Impact resistance / impact energy:	IK08 5J xx5
Protection class:	II	Optic:	HUGE - Street
Net weight [kg]:	7.596	Overall length [mm]:	560
Overall width [mm]:	330	Overall height [mm]:	215

Mechanical features

Housing material:	Aluminium	Diffuser material:	Glass
-------------------	-----------	--------------------	-------

Electrical features

Voltage type:	AC	Input voltage [V AC]:	220/240
Input frequency [Hz]:	50/60	Surge protection Differential [kV]:	10.000000

Installation

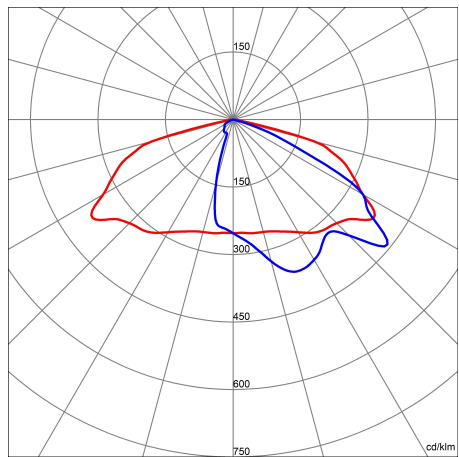
Application area:	Outdoor	Mounting type:	Streetlight
Min. ambient temperature [°C]:	-25	Max. ambient temperature [°C]:	40

Light features

MacAdam:	5	Lumen maintenance:	L90B10@115000h
Distribution of light emission:	Direct	Luminous Intensity Class:	G*4
IPEA* (road lighting):	A6+	IPEA* (large areas, roundabouts):	A7+
IPEA* (cycle-pedestrian):	A5+	IPEA* (green areas):	A4+
IPEA* (historic city centers):	A10+		

To maintain the regular updating of our products, PERFORMANCE in LIGHTING reserves the right to make changes without prior notice. For the most up to date information we always recommend you read the latest version published on the website www.performanceinlighting.com. Delivered luminaire lumen outputs and power consumptions, including losses, are subject to a tolerance of +/- 7%, and unless otherwise stated the values apply to an ambient temperature of 25°C. Terms of warranty are available at <https://www.performanceinlighting.com/qr/company/led-warranty>

Photometric data



Optional accessories

ROAD [5] MINI



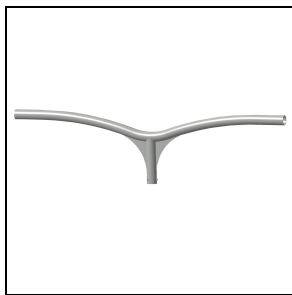
GWR5191
Visor - graphite grey
■ Graphite grey / Graphite grey



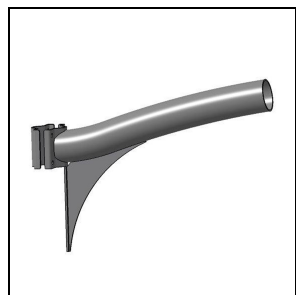
GW86167
Wall-mounting bracket 150x160x290 mm - graphite grey
■ Graphite grey / Graphite grey



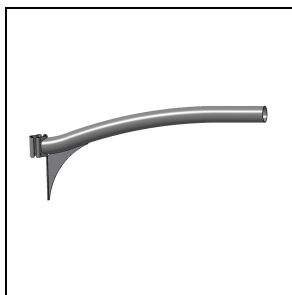
GW87581
Single pole head bracket 1 m - graphite grey
■ Graphite grey / Graphite grey



GW87582
Double pole head bracket 1+1 m - graphite grey
■ Graphite grey / Graphite grey



GW87587
Short bracket 0.5 m - graphite grey
■ Graphite grey / Graphite grey



GW87586
Long bracket 1 m - graphite grey
■ Graphite grey / Graphite grey

To maintain the regular updating of our products, PERFORMANCE in LIGHTING reserves the right to make changes without prior notice. For the most up to date information we always recommend you read the latest version published on the website www.performanceinlighting.com. Delivered luminaire lumen outputs and power consumptions, including losses, are subject to a tolerance of +/- 7%, and unless otherwise stated the values apply to an ambient temperature of 25°C. Terms of warranty are available at <https://www.performanceinlighting.com/qr/company/led-warranty>



GW84096

Conical pole painted h = 5.5 m -
graphite grey

■ Graphite grey / Graphite grey



GW87591

Conical pole painted h = 6.8 m -
graphite grey

■ Graphite grey / Graphite grey



GW84097

Conical pole painted h = 7.8 m -
graphite grey

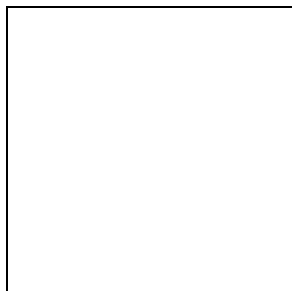
■ Graphite grey / Graphite grey



GW87592

Conical pole painted h = 8.8 m -
graphite grey

■ Graphite grey / Graphite grey



GW87593

Conical pole painted h = 9.8 m -
graphite grey

■ Graphite grey / Graphite grey