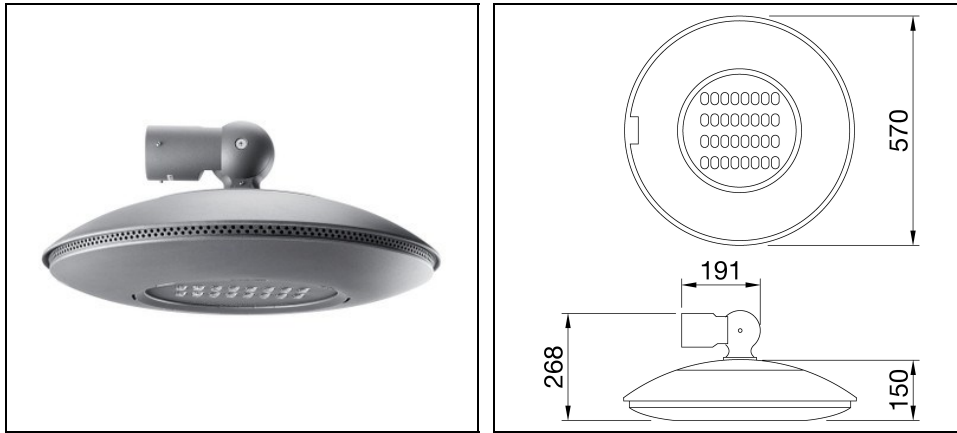


URBAN [O₃] CYCLE

Part number GWS7228



Description

Urban lighting device in die-cast aluminum EN AB 46100:

- Equipped with lateral ventilation system made in technopolymer
- Powder poliester coated after epoxy surface treatment and phosphochromating process
- Modular LED engines (2-4) with extruded aluminum heat sink
- Holding plate in PC
- Double 2-pole safety switch for 2.5 mm² wires
- Internal wiring with UG4G4 1 mm² wires
- Equipped with PMMA lenses
- Anti-aging silicone gasket
- External screws in stainless steel AISI 316
- Recessed handle closing system and steel holding cable
- It can be used up to 50°C of ambient temperature but with reduced currents as indicated in the instruction manual
- Side fixing for Ø60mm bracket in die-cast aluminum with possibility of ±15° inclination adjustment

Product data

ETIM Group:	EG000027	ETIM Class:	EC000062
-------------	----------	-------------	----------

General information

Lampholder:	LED	Light source:	LED
Luminaire lumen output [lm]:	10560	Luminaire wattage [W]:	105 W
Luminous efficacy [lm/W]:	101	CRI:	70
Colour temperature [K]:	4000	Colour / Finishing:	Graphite grey / Graphite grey
IP degree of protection:	IP66	Impact resistance / impact energy:	IK08 5J xx5
Protection class:	II	Optic:	CYCLE - Cycle/Pedestrian
Net weight [kg]:	11.761	Overall diameter [mm]:	5700
Overall height [mm]:	268		

Mechanical features

Housing material:	Aluminium	Diffuser material:	Glass
-------------------	-----------	--------------------	-------

Electrical features

Voltage type:	AC	Input voltage [V AC]:	220/240
Input frequency [Hz]:	50/60		

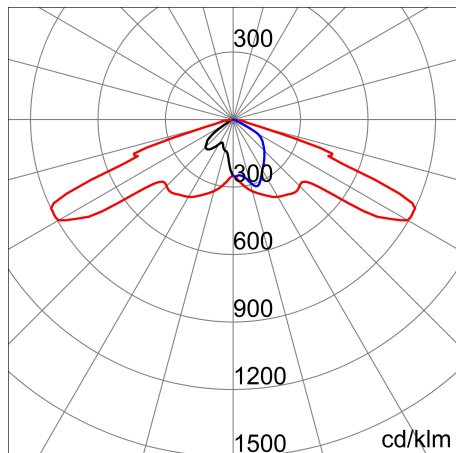
Installation

Application area:	Outdoor	Mounting type:	Area lighting
Min. ambient temperature [°C]:	-25	Max. ambient temperature [°C]:	35

Light features

Distribution of light emission:	Direct
---------------------------------	--------

Photometric data



Optional accessories

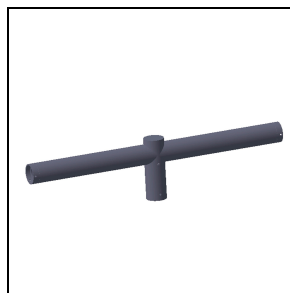
URBAN [O3]



GW87881

Single pole head bracket 0.4 m - graphite grey

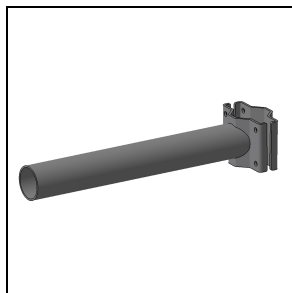
■ Graphite grey / Graphite grey



GW87882

Double pole head bracket 0.8 m - graphite grey

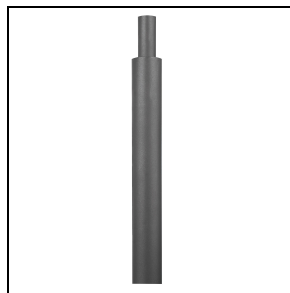
■ Graphite grey / Graphite grey



GW87883

Single intermediate bracket 0.4 m - graphite grey

■ Graphite grey / Graphite grey



GW87691

Painted cylindrical pole h = 4 m - graphite grey

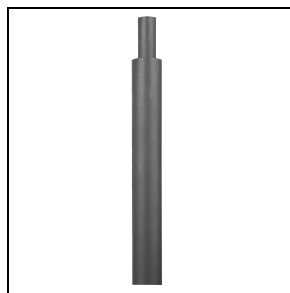
■ Graphite grey / Graphite grey



GW87691B

Painted cylindrical pole h = 4 m - BlueGreen

■ Bluegreen / Bluegreen

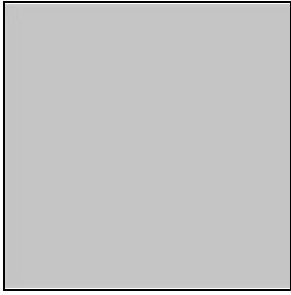


GW87692

Painted cylindrical pole h = 4.5 m - graphite grey

■ Graphite grey / Graphite grey

date: 18/4/2025



GW87692B

Painted cylindrical pole h = 4.5 m -
BlueGreen

■ Bluegreen / Bluegreen

To maintain the regular updating of our products, GEWISS reserves the right to make changes without prior notice. For the most up to date information we always recommend you read the latest version published on the website www.performanceinlighting.com. Delivered luminaire lumen outputs and power consumptions, including losses, are subject to a tolerance of +/- 7%, and unless otherwise stated the values apply to an ambient temperature of 25°C. Terms of warranty are available at <https://www.gewiss.com/ww/en/about-gewiss/standard-sales-conditions/led-warranty>

For information:
GEWISS S.p.A.
Via Domenico Bosatelli 1 - 24069 Cenate Sotto
Bergamo - Italy
Tel. +39 035 946 111

gewiss@gewiss.com
www.performanceinlighting.com