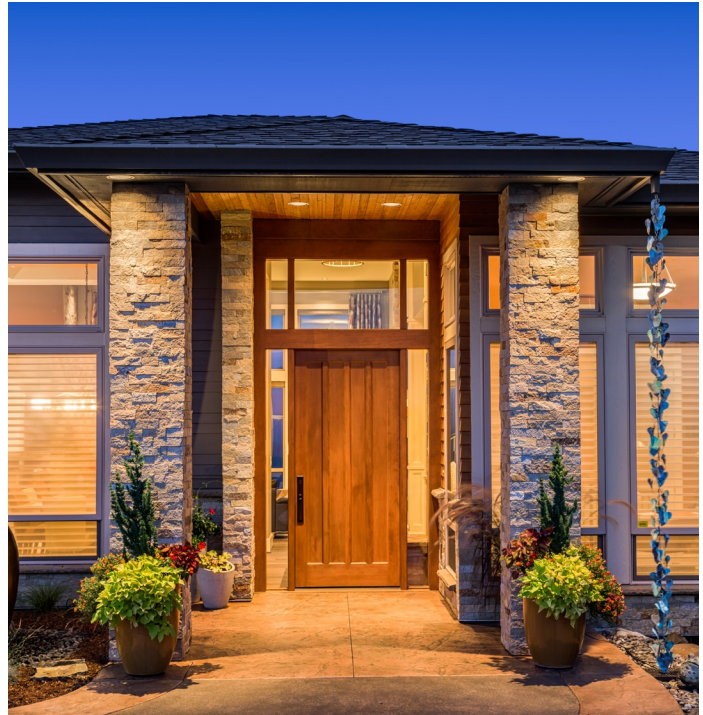
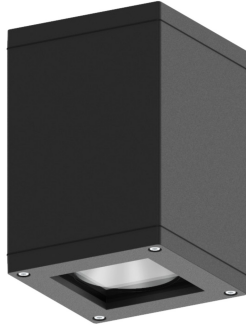


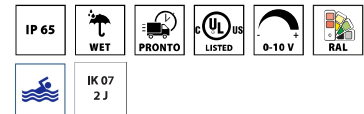
# Q-CEILING



Ceiling mount series. Fixtures consist of:

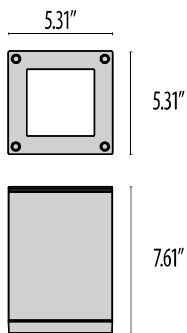
- Multi-step powder-coat painting process, optimized against UV rays and corrosion.
- Copper-free extruded aluminum housing and copper-free precision die-cast aluminum ring/faceplate, bracket and mounting plate.
- Extra-clear, tempered, silk-screened, flat glass diffuser.
- Custom molded, anti-aging gasket(s).
- Stainless steel external hardware.
- High-efficiency COB, combined with an optimized passive cooling system, provides a long LED life.
- Internal specular reflector coated with 5-layers of PVD 99.98% pure aluminum providing >95% reflection.
- Circular Intensive beam angle (C/I).

- Circular Medium beam angle (C/M).
- Diffuse light emission (SOFT).
- Input voltage: 120-277 V (50 / 60 Hz), integral 0-10 V dimming driver.
- Five optional finishes available. Add finish suffix to any part number for textured Black (BK-81), Iron gray (AN-96), Aluminum metallic (GR-94), White (WH-87), Iron rust (RB-10) when not standard.
- Consult factory for dimming options, marine-grade, custom finishes (please specify RAL color), and non-cataloged CCT (Kelvin) options including static colors.
- Product meets Buy American Act requirements within ARRA.
- 5-year warranty.
- Marine Grade finish .
- Suitable for Natatorium applications.



## FINISHES

- AN-96 / Iron gray / Textured
- GR-94 / Aluminum metallic / Textured
- WH-87 / White / Textured
- BK-81 / Black / Textured
- RB-10 / Iron rust / Textured



Q  
CEILING

Lumen Output	27K	3K	35K	4K	5K
Q-Ceiling 20°	2784	2876	2968	3061	3153
Q-Ceiling 40°	2769	2861	2953	3045	3137
Q-Ceiling 85°	2804	2897	2990	3084	3177
Q-Ceiling Soft	2190	2270	2350	2430	2510

# Order Guide - Q-CEILING



Order code example

QCE-30W-C/I-IG-3K-277-ELV

QCE-

Wattage	Optics	Finish	Kelvin	Voltage	Controls	Accessories
<b>30W</b> 30 watt (max)  <b>XX</b> Specify wattage must be under max	<b>C/I</b> 20° Beam	<b>AM</b> Aluminum Metallic	<b>27K</b> 2700k	<b>120</b> 120 volts	<b>NA</b> Non Dimming	<b>CON</b> Surface Mounted J-box with Conduit Entry  <b>REM</b> Remote mounted Emergency battery back up
			<b>3K</b> 3000k	<b>277</b> 277 volts	<b>0-10V</b> 0-10V Dimming	
	<b>C/M</b> 40° Beam	<b>IG</b> Iron Gray	<b>35K</b> 3500k			
			<b>4K</b> 4000k			
	<b>C/EW</b> 85° Beam	<b>IR</b> Iron Rust	<b>5K</b> 5000K			
			<b>BK</b> Textured Black			
	<b>SOFT</b> Diffused light		<b>WH</b> Textured White			
			<b>CC</b> Custom Color			
			<b>RED</b> Red			
			<b>BLU</b> Blue			
			<b>GRN</b> Green			
		<b>RGBW</b> RGBW Contact factory for control details				

**CON**

