

QUASAR 20



Wall sconce series. Fixtures consist of:

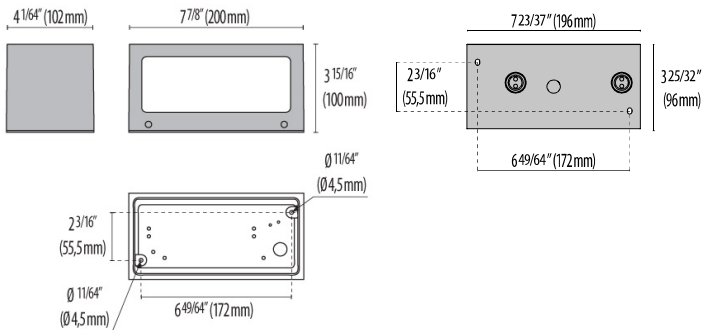
- Multi-step powder-coat painting process, optimized against UV rays and corrosion.
- Copper-free precision die-cast aluminum housing and mounting plate.
- Micro-prismatic patterned flat, tempered silk-screened soda-lime glass diffuser.
- Custom molded, anti-aging gasket(s).
- Stainless steel external hardware.
- High-efficiency COB, combined with an optimized passive cooling system, provides a long LED life.
- Internal specular reflector coated with 5-layers of PVD 99.98% pure aluminum providing >95% reflection.

- Single (TECH) or dual (DOUBLETECH) light emission.
- IESNA Type I light distribution.
- Input voltage: 120-277 V (50 / 60 Hz), integral 0-10 V dimming driver.
- Junction box mounting plate included (for 4" octagon box only, provided by others).
- Consult factory for dimming options, custom finishes (please specify RAL color), and non-cataloged CCT (Kelvin) options including static colors.
- Product meets Buy American Act requirements within ARRA.
- 5-year warranty.
- Marine Grade finish.
- Suitable for Natatorium applications.



FINISHES

- AN-96 / Iron gray / Textured
- GR-94 / Aluminum metallic / Textured
- WH-87 / White / Textured
- BK-81 / Black / Textured
- RB-10 / Iron rust / Textured



QUASAR 20

Lumen Output	27K	3K	35K	4K	5K
Quasar 20 Tech	661	695	729	764	798
Quasar 20 Double Tech	1151	1211	1271	1332	1392

Order Guide - Quasar 20



Order code example

Q20-M-AM-11-T1-4K-120-NA

Q20-

Output	Wattage	Finish	Optics	Kelvin	Voltage	Controls	Options
M (One-Way)	11 11 watt (M Max)	AM Aluminum Metallic	T1 Type 1	27K 2700K	120 120 volts	NA Non Dimming	REM Remote Emergency Battery Back Up
B (Two-Way)	22 22 watt (B Max)	IG Iron Gray	NB Narrow Beam	3K 3000K	277 277 volts	0-10V 0-10V Dimming	
	XX Specify Wattage Must be below max	IR Iron Rust		35K 3500K		ELV ELV Dimming	
		BK Textured Black		4K 4000K			
		WH Textured White		5K 5000K			
		CC Custom Color		BLU Static Blue			
				RED Static Red			
				GRN Static Green			
				RGBW RGBW Consult factory for control details			