

# BLIZ ROUND



Ceiling and wall mount series. Fixtures consist of:

- Multi-step powder-coat painting process, optimized against UV rays and corrosion.
- Copper-free precision die-cast aluminum housing and ring/faceplate.
- High transmittance, internally coated, soda-lime pressed glass diffuser, thermally and chemically quenched to strengthen the impact resistance and reduce the effect of rapid temperature changes.
- Custom molded, anti-aging gasket(s).
- Stainless steel external hardware.
- Custom MCPCB utilized to maximize heat dissipation and promote a long LED life.
- 100% uniform diffused light emission.
- Input voltage: 120-277 V (50 / 60 Hz), integral 0-10 V dimming driver.

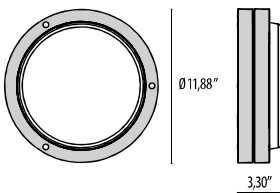
- Optional, integral, high-frequency motion-sensor operating at a frequency of 5.8 GHz +/- 75 MHz (HF versions).
- Optional, integral, emergency battery-pack designed for a minimum operation of 90 minutes (EMPK versions).
- Consult factory for dimming options, custom finishes, and non-cataloged CCT (Kelvin) options.
- 5-year warranty on components.
- 10-year warranty on glass.
- Marine Grade finish.
- Suitable for Natatorium applications.
- Consult factory for any Buy American Act (BAA) or Build America Buy America Act (BABAA) requirements.



## FINISHES

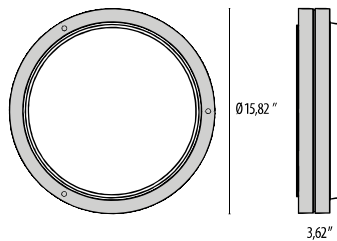
- AN-96 / Iron gray / Textured
- GR-94 / Aluminum metallic / Textured
- WH-87 / White / Textured
- BK-81 / Black / Textured
- RB-10 / Iron rust / Textured

12"



BLIZ ROUND  
30

16"



BLIZ ROUND  
40

Scan here  
for installation  
instructions



| Lumen Output        | 2700K | 3000K | 3500K | 4000K |
|---------------------|-------|-------|-------|-------|
| BLIZ 30 – 10W (min) | 689   | 716   | 743   | 770   |
| BLIZ 30 – 20W       | 1377  | 1431  | 1485  | 1540  |
| BLIZ 30 – 30W (max) | 2096  | 2178  | 2260  | 2343  |
| BLIZ 40 – 10W (min) | 663   | 685   | 707   | 728   |
| BLIZ 40 – 20W       | 1326  | 1370  | 1413  | 1456  |
| BLIZ 40 – 30W       | 1989  | 2054  | 2120  | 2184  |
| BLIZ 40 – 40W (max) | 2652  | 2739  | 2826  | 2912  |



# TRIM OPTIONS Contact Factory for MOQ- Some options may require reduced wattage



**STANDARD TRIM**



**EYELID TRIM**



**CROSS TRIM**



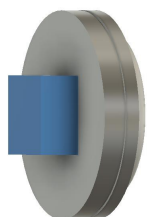
**VISA TRIM**

## Order Guide - Bliz Round

Order code example

BRD-30-AM-3K-277-NA-H/L-STANDARD

| Housing Style          | Wattage  | Finish                            | Color Temperature                                      | Voltage                | Controls                                   | Accessories   | Optional Trim   |
|------------------------|--|-----------------------------------|--|------------------------|--|---|---|
| <b>30</b><br>Round 12" | <b>10</b><br>10 watt                                 | <b>AM</b><br>Aluminum<br>Metallic | <b>27K</b><br>2700k                                    | <b>UNV</b><br>120-277V | <b>NA</b><br>Non<br>Dimming                | <b>EMPK</b><br>Integral Emergency<br>Battery<br>back up                             | (See pictures above)<br><br>Contact Factory for<br>MOQ<br><b>Standard Trim</b>                      |
| <b>40</b><br>Round 16" | <b>20</b><br>20 watt                                 | <b>IG</b><br>Iron Gray            | <b>3K</b><br>3000k                                     |                        | <b>0-10V</b><br>0-10V<br>Dimming           | <b>CWEMPK</b><br>Remote Cold Weather<br>Emergency Battery<br>back up (-4°F - 122°F) | <b>Eyelid Trim</b><br>Bliz 30 15W Max<br>Bliz 40 20W Max  |
|                        | <b>30</b><br>30 watt<br>(Bliz 30 MAX)                | <b>IR</b><br>Iron Rust            | <b>35K</b><br>3500k                                    |                        |  |   | <b>Cross Trim</b>   |
|                        | <b>40</b><br>40 watt<br>(Bliz 40 MAX)                | <b>BK</b><br>Textured Black       | <b>4K</b><br>4000k                                     |                        |  |   | <b>Visa Trim</b><br>Bliz 30 15W Max<br>Bliz 40 20W Max  |
|                        | <b>XX</b><br>Specify<br>Wattage must<br>be below max | <b>WH</b><br>Textured White       | <b>AMB</b><br>590 nm<br>Amber<br>(turtle-<br>friendly) |                        |  |   | <b>CON2</b><br>(double-gang<br>j-box, adaptor<br>plate and 1/2"<br>knockouts)                       |
|                        |  | <b>CC</b><br>Custom Color         | <b>RGBW*</b><br>RGBW                                   |                        | <b>1%</b><br>One Percent<br>Dimming Driver | <b>H/L</b><br>High-Low Occupancy<br>Sensor  | <b>CON4</b><br>(double-gang<br>j-box, adaptor<br>plate and 3/4"<br>knockouts)                       |
|                        |  |                                   | *See below<br>for details                              |                        | For more<br>Options<br>Contact<br>Factory  |   | <b>TP</b><br>Tamper<br>Proof<br>hardware  |
|                        |  |                                   |  |                        |  |   | <b>BABAA</b><br>Build America<br>Buy America Act<br>compliant<br>(not available<br>for all options) |



Fixture shown with  
CON2/CON4 option  
colored for contrast

80 CRI STANDARD - OTHER OPTIONS AVAILABLE  
BUG RATING - B1-U2-G1

# REMOTE RGBW ACCESSORIES

## Power Supply



**17433**  
Kit driver 48V



**17096**  
Kit driver 48V WP

## RF Controls



**3104173**  
RGBW RF controller 4 channel  
(0.35A each CH)



**31041730**  
RGBW RF controller WP 4 channel  
(0.35A each CH)



**310429**  
RGBW hand held remote

## DMX Controls



**178973**  
RGBW DMX enabler/decoder 4  
channel (0.35A each CH)



**1789730**  
RGBW DMX enabler/decoder WP 4  
channel (0.35A each CH)



**11015**  
Terminating Resistor



**110150**  
Terminating Resistor WP