



INSERT+ | RECESSED WALL

PRODUCT CODE

PROJECT

TYPE

PERFORMANCE
IN LIGHTING

powered by
GEWISS



Company

Performance in Lighting USA, located in Conyers, GA, is part of an international group of companies headquartered in Verona, Italy.

The group was formed from a number of well-established technical lighting companies from various countries. Performance in Lighting has a wide sales and distribution network operating in over 100 countries worldwide. Production facilities are located in Verona Italy, Bergamo Italy, Goslar Germany, Brussels Belgium, Conyers GA USA. Sales/distribution subsidiaries are located in England, Holland, France, Finland, Spain, Portugal, Australia, Dubai and Japan.

Recognized for its unique professional approach and technical know-how, Performance in Lighting has combined its international experience and technical expertise to become a worldwide leader in its industry. The group offers various lighting solutions worldwide for many applications including interior, exterior, residential, commercial, and sports lighting providing options to satisfy both architectural and engineering requirements.

Performance in Lighting USA concentrates on specification grade luminaires designed to provide a vast array of lighting solutions. Our concentration is outdoor products for illuminating commercial spaces from structural facades to parking areas. We strive to meet the demands of today's lighting community offering made in USA products, European designed with clean, contemporary aesthetics along with aggressive price points and fast lead times.

Pronto Program

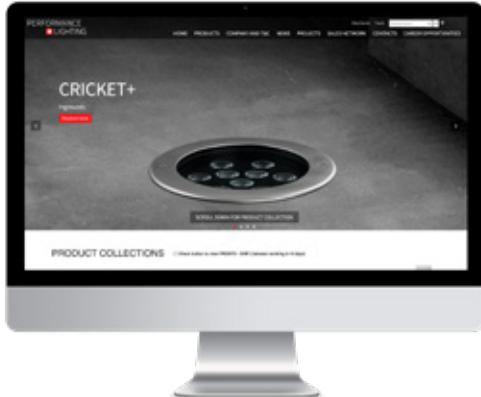
PERFORMANCE IN LIGHTING offers a wide range of quick ship fixtures through the Pronto Program and a host of options to fit within the unique budget of your next project.





Overview

Click the QR-code for latest information.



Website

Please visit our web site www.performanceinlighting.com/us/us/ for the latest updated versions available.



5-year warranty

All products are covered by a 5-year warranty, provided that they are used and maintained according to instructions. Focus on quality, safety and product lifetime/longevity are the essential objectives of PERFORMANCE IN LIGHTING. For additional information, email info.usa@pil.lighting

INSERT+

Walk with safety

This successful series has been synonymous with recessed wall luminaires since 1980. Style and technique follow a direction of evolution, not revolution. The INSERT series originally offered with traditional light sources are entirely remade in LE now evolved into an offering of LED light sources. This series provides improved visual comfort; energy savings is an accent and marker-light illuminating where needed. This INSERT+ offers the same luminous flux as the traditional fixture but with valuable energy savings.

The designers at PERFORMANCE IN LIGHTING are never satisfied, and their quest for the perfect step light has given light to the INSERT+ Series. With a discreet aperture to maximize visual comfort without sacrificing output, this piece provides the step light with an elegant aesthetic at an unrefined price point. The simplest of fixtures can easily integrate into the exterior of your project traditionally or serve inside as a contemporary element in hallways and patient rooms. The INSERT+ series offers a distinct look while managing to be integrated into nearly every project subtly.

The INSERT+ comes in five sizes. The solid brass faceplate option is available for INSERT+ 1 only.





House in Albanchez | Almería | Spain

INSERT+

Recessed wall steplight series. Fixtures consist of:

Construction

- Multi-step powder-coat painting process, optimized against UV rays and corrosion.
- Copper-free (<1%) precision die-cast aluminum housing and ring/faceplate.
- Custom MCPCB utilized to maximize heat dissipation and promote long LED life.
- Frosted, tempered, silk-screened, flat glass diffuser.
- Extra-clear, flat, tempered soda-lime glass diffuser and High-transmittance transparent optics (INSERT+3 TYPE III).
- Screen-printed tempered glass front diffuser (GLASS options)
- Custom molded, anti-aging gasket(s).
- Stainless steel external hardware.
- Copper-free (<1%) aluminum extruded post.
- Steel ground base plate included for bollards.

Installation

- Mud Ring included for INSERT+ ZERO options (J-Box provided by others).
- Pre-wired factory sealed cable for external electrical connection included.
- Suitable for concrete or hollow wall applications.
- Stainless steel recessed rough-in kit available for INSERT+ 1 / 2 / 3 versions (to be ordered separately).
- Optional INSERT+ 1 marine-grade, polished, brass faceplate suitable for coastal applications available (ordered separately).

Optics

- Type II (INSERT+ ZERO / 3), Type III (INSERT+ 1 / 2 / 3) and diffuse (GLASS) light distributions.

Electrical

- Input voltage: 120-277 V (50/60 Hz), integral driver (INSERT+ ZERO / 1 / 2 / 2V); 120-277 V (50/60 Hz), integral 0-10 V dimming driver (INSERT +3).

Options

- The luminaire may be configured with numerous options and multiple standard finishes. Not all options are available in all configurations. Consult factory for more information about specification sheet details to build your light.

Listings

- UL Wet location listed. IP65 rated.
- Product meets Buy American Act (BAA) requirements within ARRA.
- ADA compliant.
- Consult factory for which version qualifies for the PRONTO-SHIP program. All Rough-Ins are available to ship within 48-72 hrs. Orders must be marked "PRONTO."
- Photometric data measured according to UNI EN 13032-1/4 and IES LM-79-08
- Actual performance may differ as a result of the end-user environment and application. All values are design or typical values, measured under laboratory conditions at 25 °C. Specifications are subject to change without notice.

Warranty

- 5-year limited warranty. Complete warranty terms located at www.performanceinlighting.com



INSERT+ ZERO
CLIP GLASS



INSERT+ ZERO



INSERT+ ZERO
CLIPS



INSERT+ 1



INSERT+ 1
MARINE



INSERT+ 2



INSERT+ 2V



INSERT+ 2V
BOLLARD



INSERT+ 3

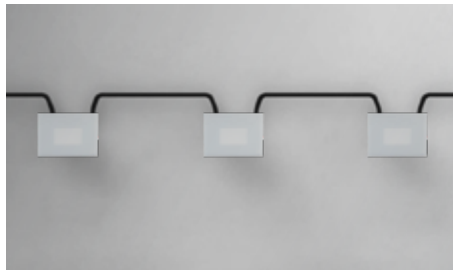
INSERT+ ZERO CLIP GLASS



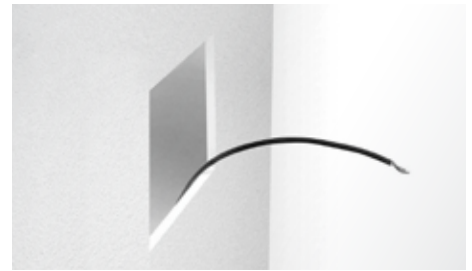
Screen-printed toughened glass front diffuser (GLASS options)



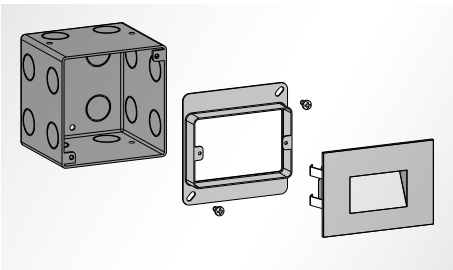
No visible screws.



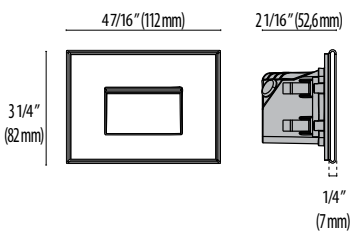
The fixture is suitable for through-wiring.

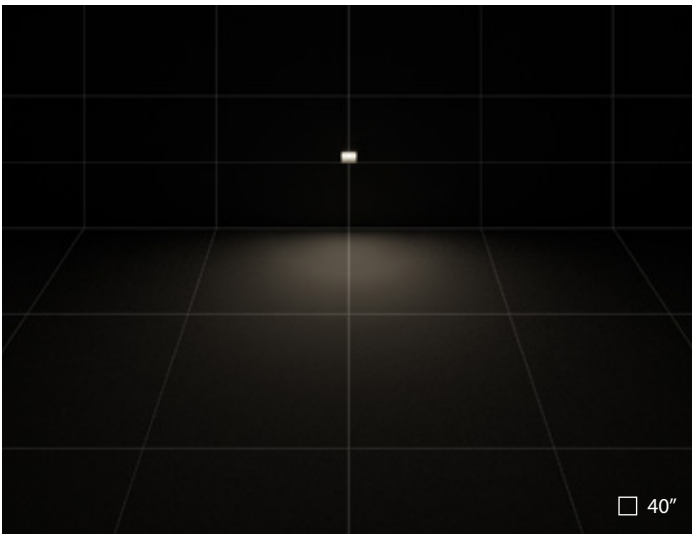


Suitable for concrete or hollow walls.



Mud Ring included for INSERT+ ZERO options (J-Box provided by others).





INSERT+ ZERO CLIPS GLASS | Symmetric Extra Wide Reflector

INSERT+ ZERO / ZERO CLIPS



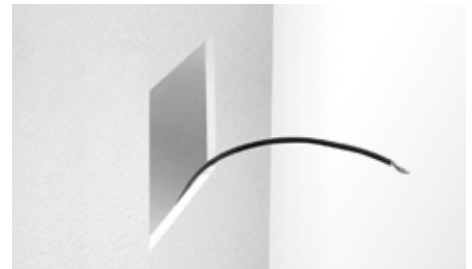
The fixture is suitable for through-wiring.



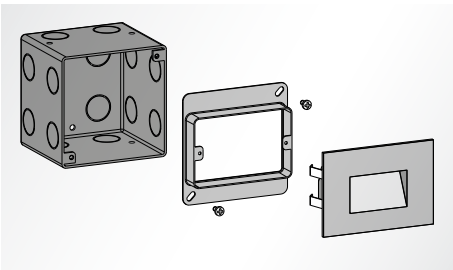
Stainless steel external hardware.



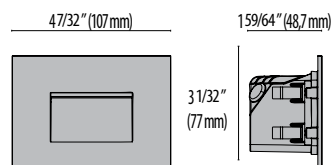
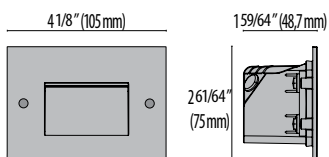
No visible screws.



Suitable for concrete or hollow walls.

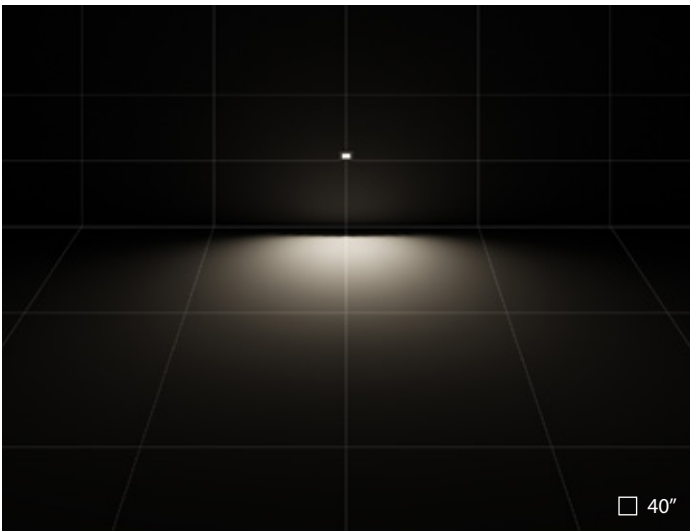


Mud Ring cover included for INSERT+ ZERO / ZERO CLIPS (for rough-in kit provided by others).

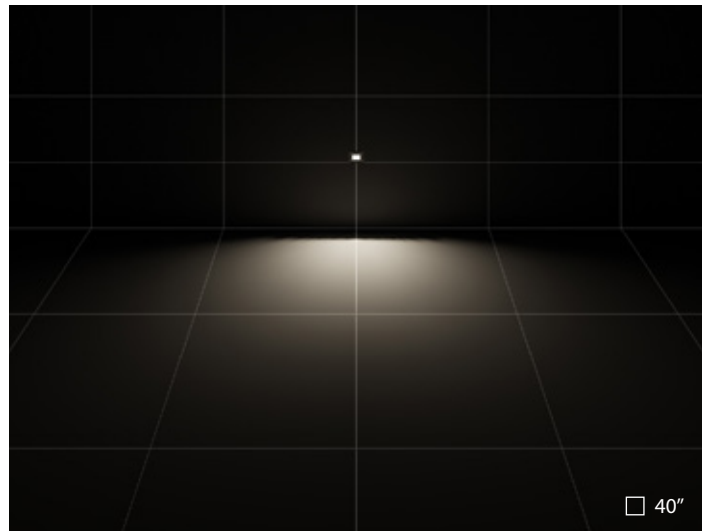




Private villa | Verona | Italy



INSERT+ ZERO | Asymmetric Extra-Wide optics



INSERT+ ZERO CLIPS | Asymmetric Extra-Wide optics

INSERT+ 1



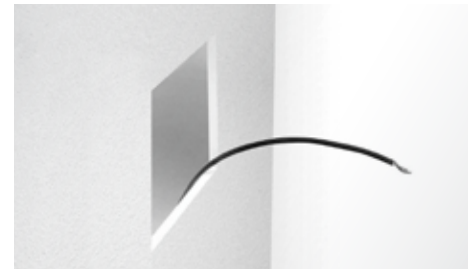
Optional INSERT+ 1 marine-grade, polished, brass cover suitable for coastal applications available (to be ordered separately).



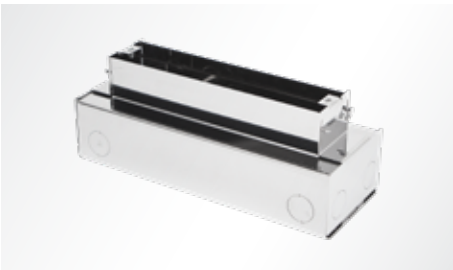
The product INSERT+ 1 is provided pre-cabled with nickel-plated brass cable gland.



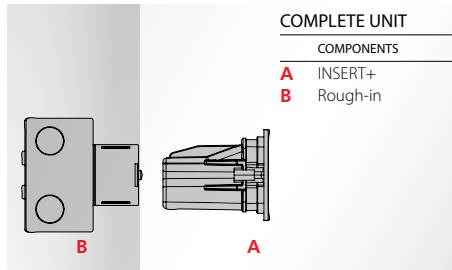
Stainless steel external hardware.



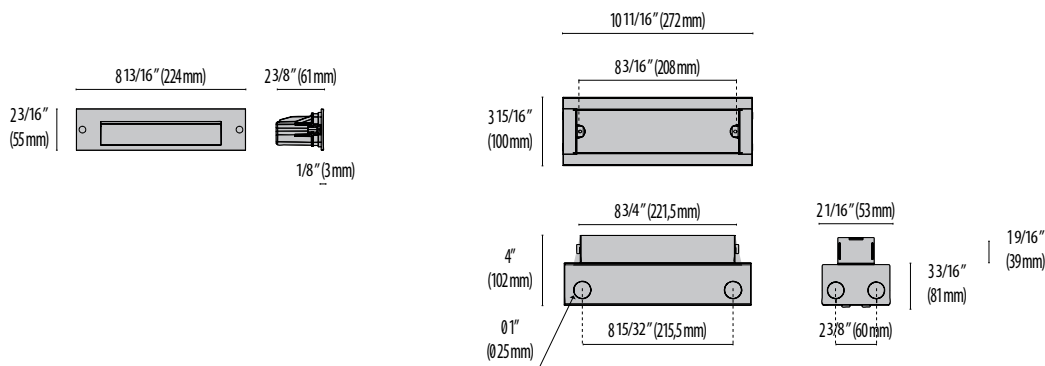
Suitable for concrete or hollow walls.



Stainless steel recessed rough-in kit required (to be ordered separately).

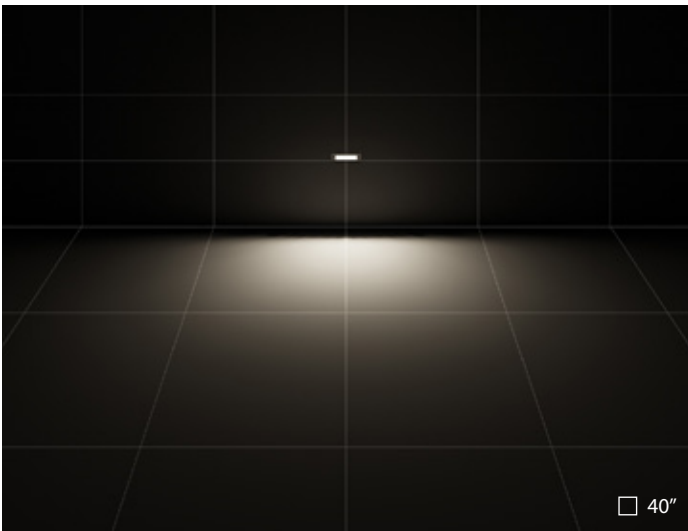


For products that must be mounted on a post, bracket, track or recessed into the wall, it is often necessary to order several different parts (codes) to get the complete configuration.





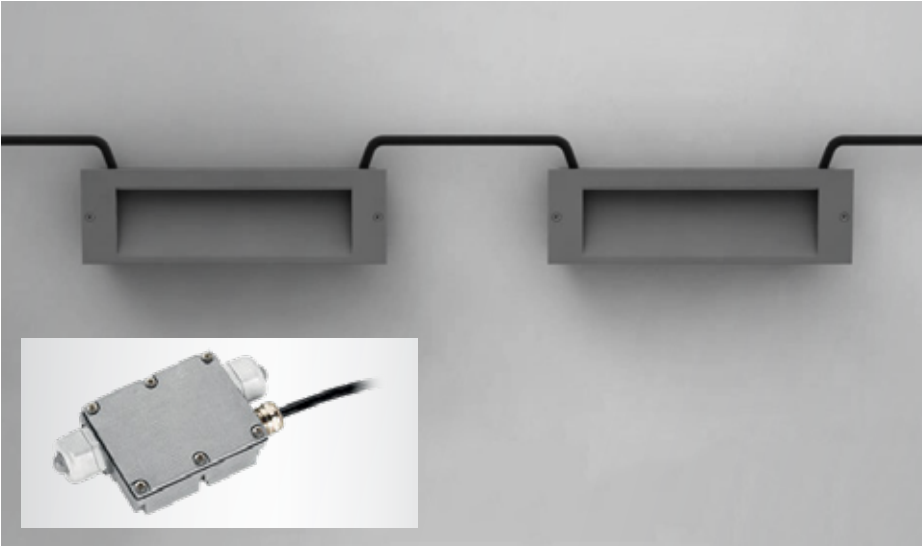
Palm Beach Torreblanca | Torreblanca | Málaga | Spain



□ 40"

INSERT+ 1 | Asymmetric Medium optics

INSERT+ 2



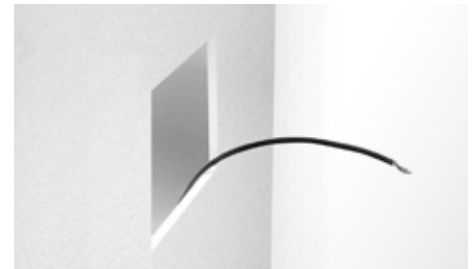
Pre-wired cable is factory sealed to housing with a cable gland allowing external electrical connections. The fixture is suitable for through-wiring.



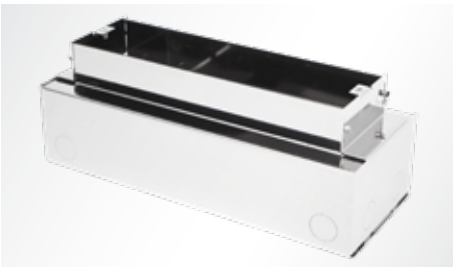
The product INSERT+ 2 is provided pre-cabled with nickel-plated brass cable gland.



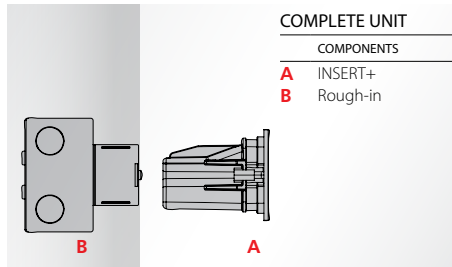
Stainless steel external hardware.



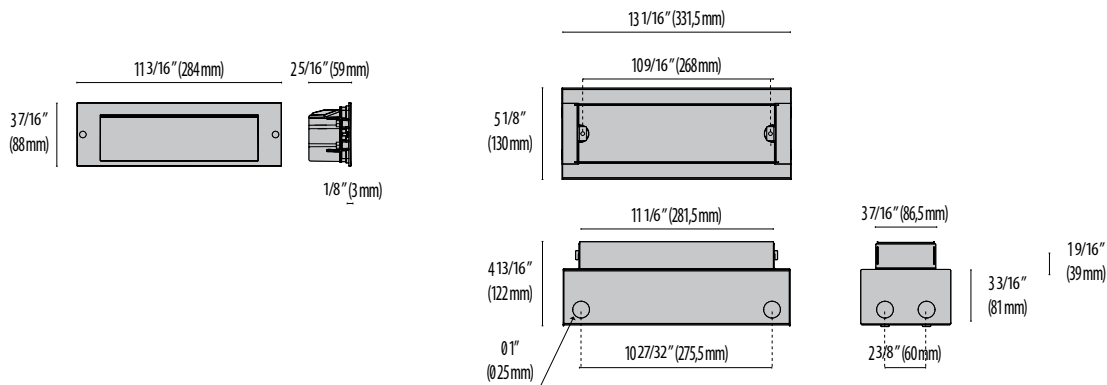
Suitable for concrete or hollow walls.



Stainless steel recessed rough-in kit required (to be ordered separately).

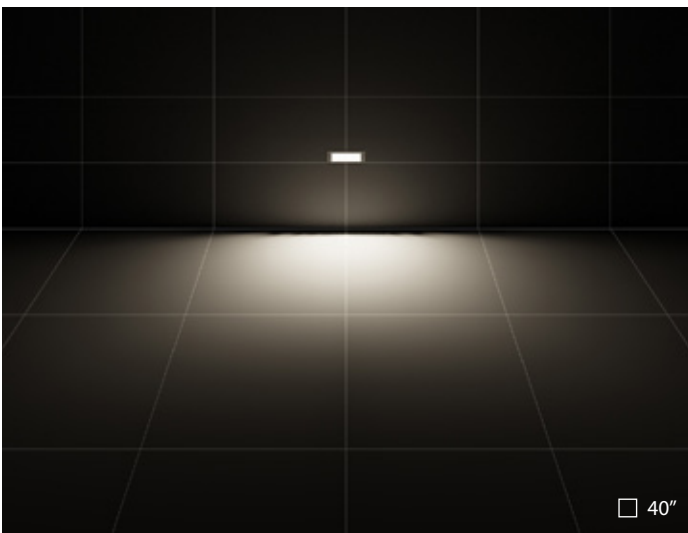


For products that must be mounted on a post, bracket, track or recessed into the wall, it is often necessary to order several different parts (codes) to get the complete configuration.



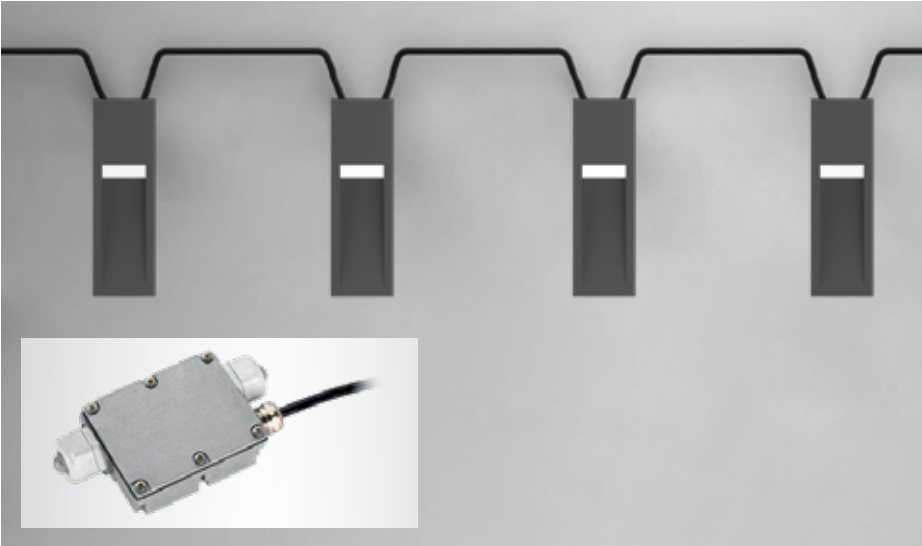


House in Albanchez | Almería | Spain



INSERT+ 2 | Asymmetric Wide optics

INSERT+ 2 V



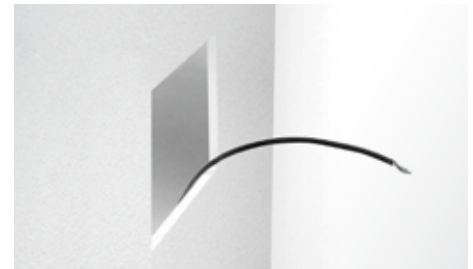
Pre-wired cable is factory sealed to housing with a cable gland allowing external electrical connections. The fixture is suitable for through-wiring.



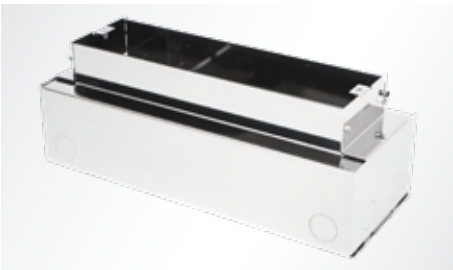
Pre-wired factory sealed cable for external electrical connection included.



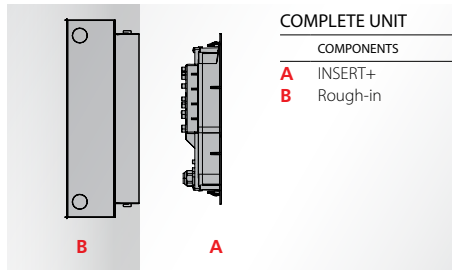
Multi-step powder-coat painting process, optimized against UV rays and corrosion. Copper-free (<1%) precision die-cast aluminum housing and ring/faceplate.



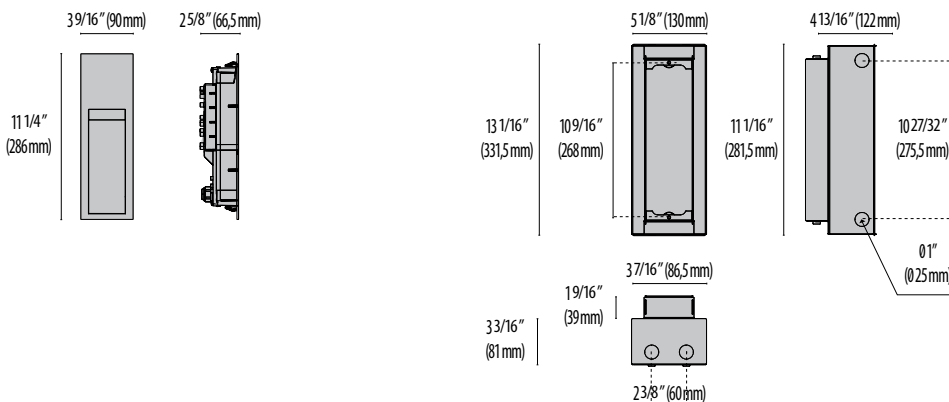
Suitable for concrete or hollow walls.

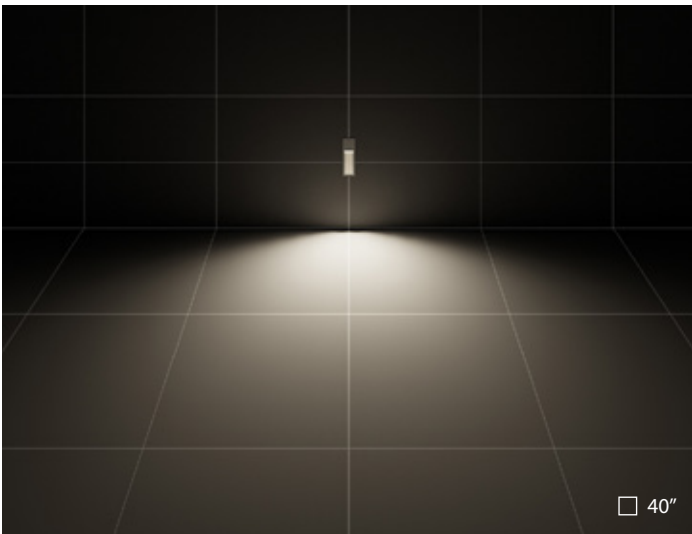


Stainless steel recessed rough-in kit required (to be ordered separately).



For products that must be mounted on a post, bracket, track or recessed into the wall, it is often necessary to order several different parts (codes) to get the complete configuration.





INSERT+ 2 V | Asymmetric Extra-Wide

INSERT+ 3



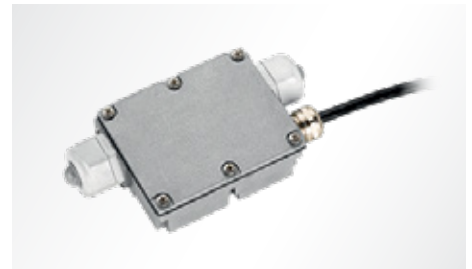
Suitable for concrete or hollow walls.



Extra-clear, flat, tempered soda-lime glass diffuser and High-transmittance transparent optics (INSERT+3 TYPE II).



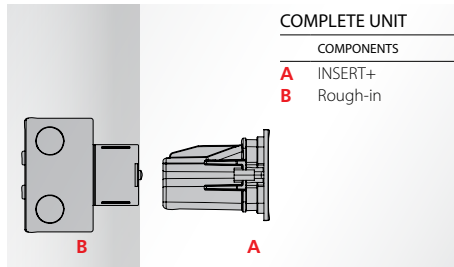
Frosted, flat, tempered silk screened soda-lime glass diffuser (INSERT+3 TYPE III).



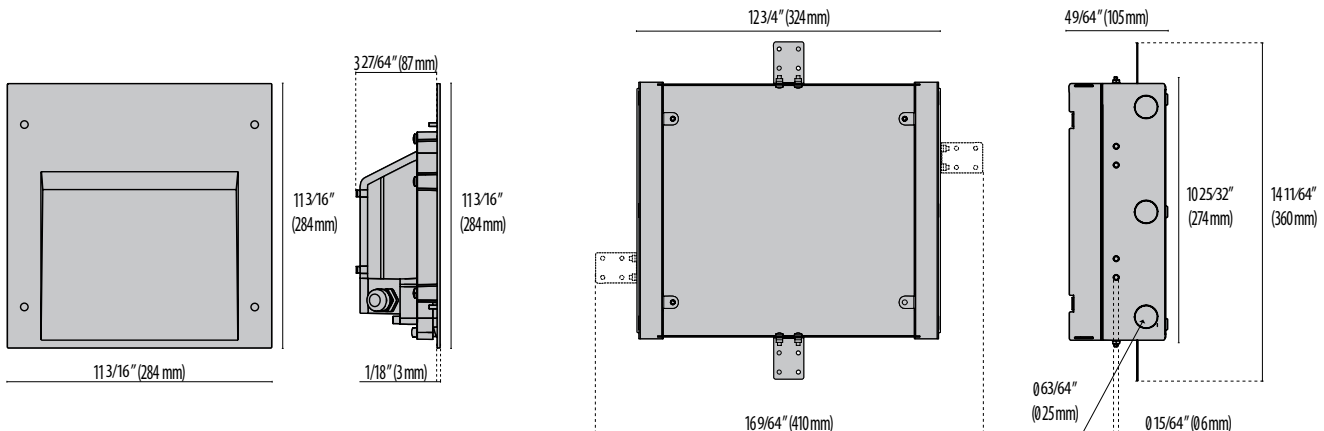
Pre-wired cable connects luminaire with WATER-STOP connection system, suitable for through wiring. Included cable glands accept cables from Ø0.35" up to Ø0.63".

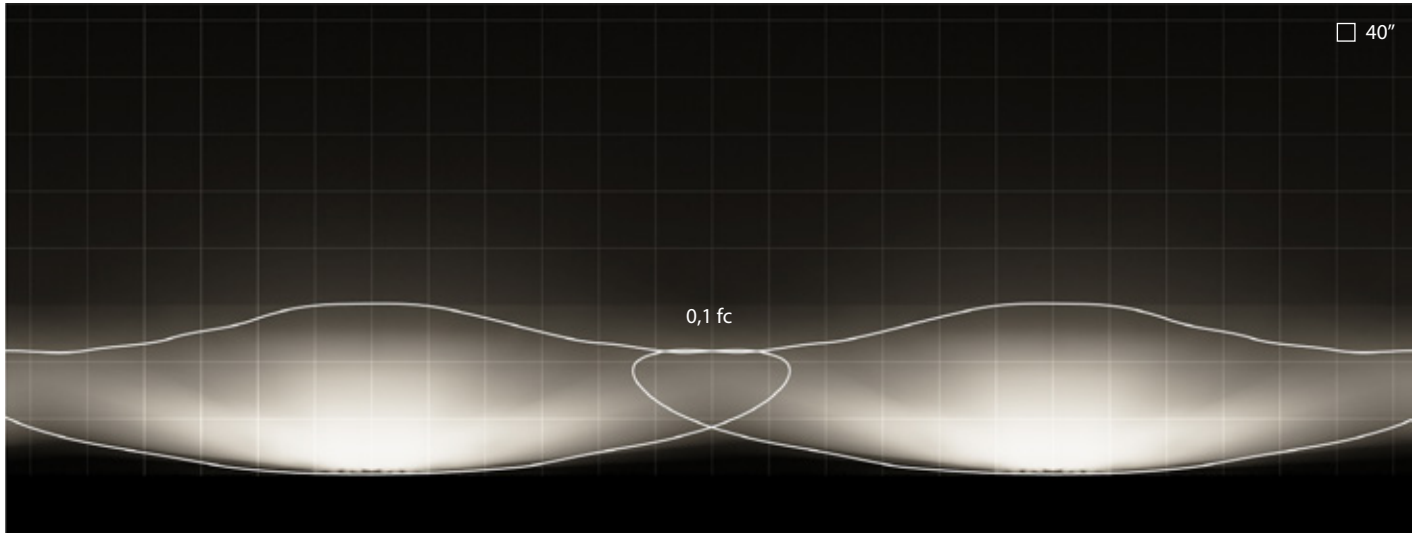


Stainless steel recessed rough-in kit required (to be ordered separately).



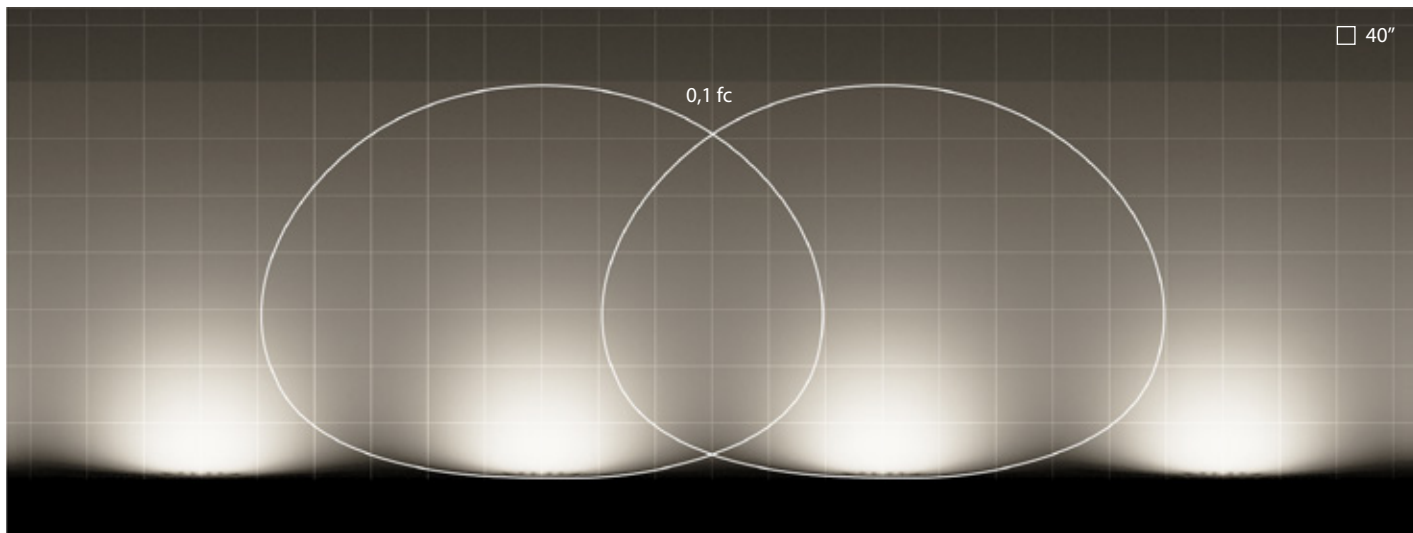
For products that must be mounted on a post, bracket, track or recessed into the wall, it is often necessary to order several different parts (codes) to get the complete configuration.





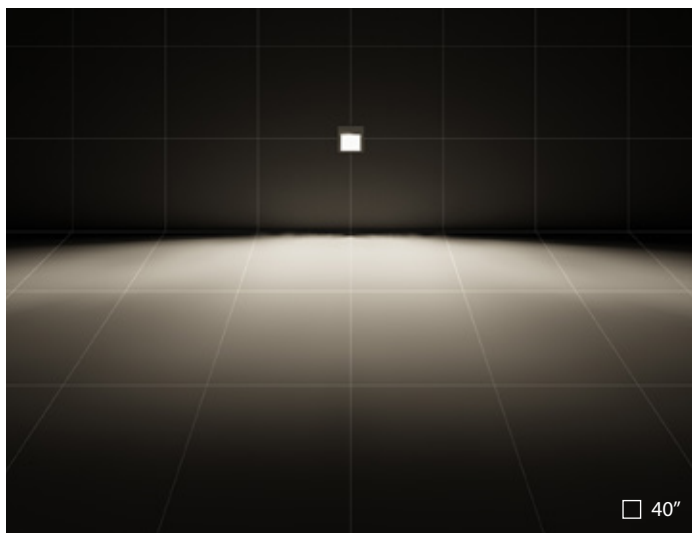
INSERT+ 3 | TYPE II

Luminaire spacing = 39'4" (12m)
 Path depth = 9'10" (3m)
 Mounting height = 3'3" (1m)

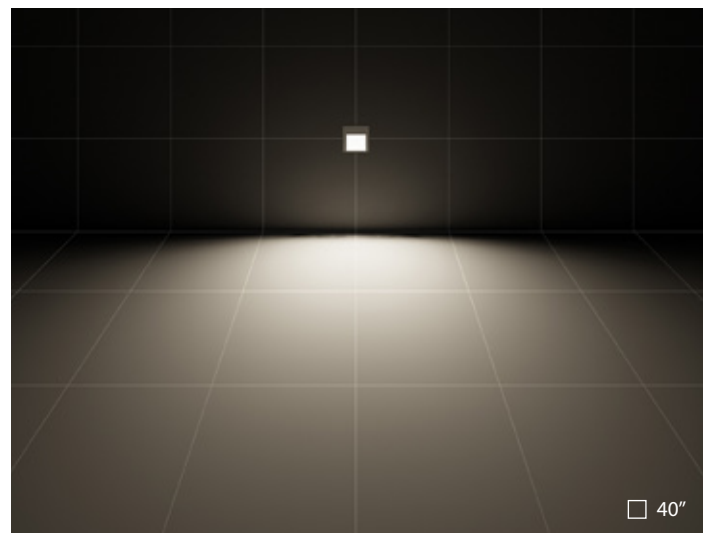


INSERT+ 3 | TYPE III

Luminaire spacing = 19'8" (6m)
 Path depth = 23'0" (7m)
 Mounting height = 3'3" (1m)

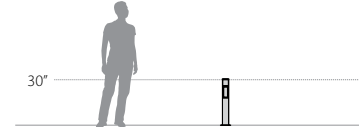


INSERT+ 3 | TYPE II



INSERT+ 3 | TYPE III

INSERT+ 2 V BOLLARD



Multi-step powder-coat painting process, optimized against UV rays and corrosion.
 Copper-free (<1%) precision die-cast aluminum housing and ring/faceplate.
 Copper-free (<1%) aluminum extruded post.



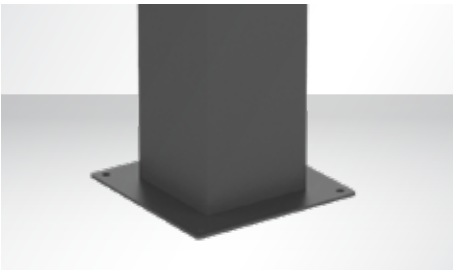
Frosted, tempered, silk-screened, flat glass diffuser.



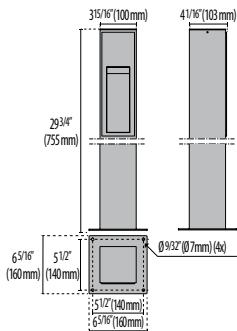
Optional, integral, line-voltage, photoelectric switch sensor (PHOTOCELL versions)



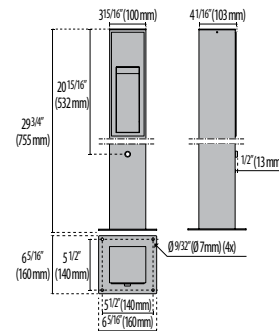
Optional, integral, line-voltage, passive infrared motion sensor (PIR SENSOR versions).



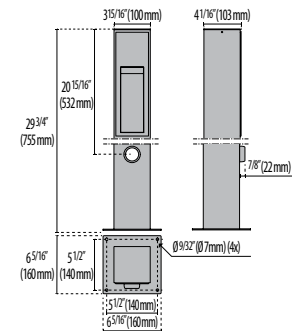
Steel ground base plate included for bollards.



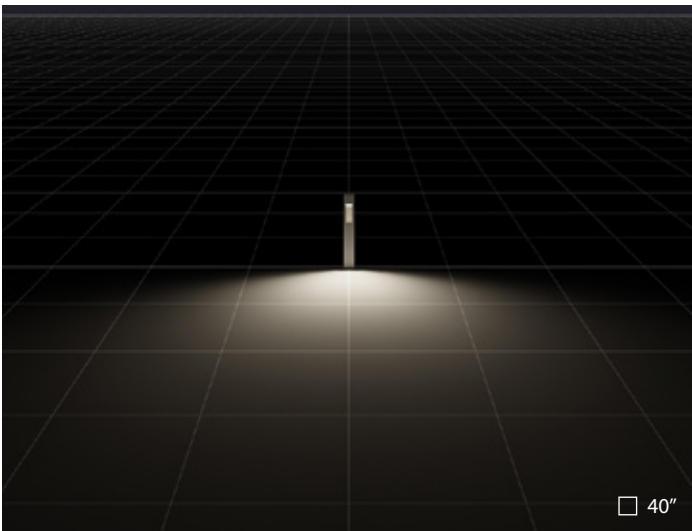
INSERT+ 2V BOLLARD 750



INSERT+ 2V BOLLARD 750 PHOTOCELL



INSERT+ 2V BOLLARD 750 SENSOR



INSERT+ 2V BOLLARD | Asymmetric Extra-Wide

PERFORMANCE
IN LIGHTING

powered by
GEWISS

PERFORMANCE IN LIGHTING
2621 Keys Pointe
Conyers, GA 30013 - United States
Ph 770.822.2115
Fax 770.822.9925

www.performanceinlighting.com