

# STEEL ROUND MIDI



In-ground series. Fixtures consist of:

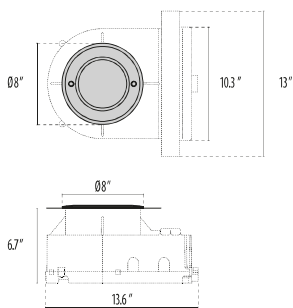
- Copper-free die-cast aluminum housing and die-cast corrosion-resistant AISI 316 stainless steel trim.
- Extra-clear, flat, tempered silk-screened soda-lime glass diffuser.
- Custom molded, anti-aging gasket(s).
- Stainless steel external hardware.
- Custom MCPCB utilized to maximize heat dissipation and promote a long LED life.
- High-transmittance transparent optics.
- Standard aimable optic system ( $\pm 7^\circ$ ).
- $8^\circ \times 8^\circ$  beam angle (C/I).
- $10^\circ \times 45^\circ$  beam angle (ELL).
- Input voltage: 120-277 V (50 / 60 Hz), integral driver.
- Pre-wired cable connects luminaire with WATER-STOP connection system, suitable for through wiring. Included cable glands accept cables from  $\varnothing 0.35"$  up to  $\varnothing 0.63"$ .
- COMPACT reduced depth rough-in comes with formed steel bars to provide support in drive-over applications and is designed to encourage water drainage.
- Drive over rated <6 MPH, 4409 lbs weight  
Static load up to 4409 lbs

- Each rough-in kit is provided with a protective faceplate to avoid possible deformations during the installation in concrete to simplify installation.
- Standard easy-to-adjust mounting system that enables the fixture to be easily aimed even after installation.
- Consult factory for dimming options, custom finishes (please specify RAL color), and non-cataloged CCT (Kelvin) options including static colors.
- Consult factory for frosted or non-slip glass options.
- Thermoplastic compression-molded rough-in kit to be ordered separately.
- For outdoor inground applications, provide drainage gravel at least 12" below the rough-in or a suitable drainage system.
- Product meets Buy American Act requirements within ARRA.
- 5-year warranty.
- Marine Grade finish.
- Suitable for Natatorium applications.



## FINISHES

- INOX / Stainless steel / Matt
- BK-81 / Black / Textured
- AN-96 / Iron gray / Textured
- GR-94 / Aluminum metallic / Textured
- WH-87 / White / Textured
- RB-10 / Iron rust / Textured



STEEL ROUND  
MIDI

Lumen Output	3K	4K	5K	6K
Steel Round Midi ELL	256	328	340	352
Steel Round Midi $8^\circ$	320	419	443	467

# Order Guide - Steel Round Midi



Order code example

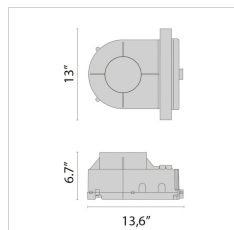
**SRMIDI-15.8-20-SS-27K-120-NA**

SRMIDI-

Wattage	Optics	Finish	Kelvin	Voltage	Controls	Accessories
<b>15.8</b> 15.8 watt (max)  <b>XX</b> Specify wattage must be under max	<b>8</b> 8" Beam	<b>BSS</b> Stainless Steel Brushed	<b>27K</b> 2700k	<b>120</b> 120 volts	<b>NA</b> Non Dimming	<b>NS</b> Non-Slip Glass
	<b>15</b> 15" Beam	<b>SS</b> Stainless Steel Polished	<b>3K</b> 3000k	<b>277</b> 277 volts	<b>0-10V</b> 0-10V Dimming	<b>HEX</b> Hexcell Louver
	<b>20</b> 20" Beam	<b>AM</b> Aluminum Metallic	<b>35K</b> 3500k		<b>ELV</b> ELV Dimming	<b>FRST</b> Frosted glass lens
	<b>30</b> 30" Beam	<b>IG</b> Iron Gray	<b>4K</b> 4000k			
	<b>35</b> 35" Beam	<b>IR</b> Iron Rust	<b>5K</b> 5000K			
	<b>45</b> 45" Beam	<b>BK</b> Textured Black	<b>65K</b> 6500K			
	<b>55</b> 55" Beam	<b>WH</b> Textured White	<b>RED</b> Red			
	<b>75</b> 75" Beam	<b>CC</b> Custom Color	<b>BLU</b> Blue			
	<b>80</b> 80" Beam		<b>GRN</b> Green			
	<b>ELL</b> 10"x45"		<b>AMB</b> Amber			

## REQUIRED FOR INSTALLATION

### STEEL ROUND MIDI



310331  
Recessed Rough-in kit