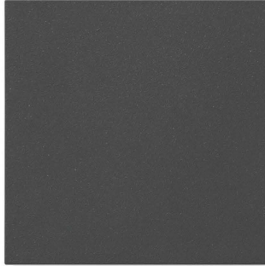


# MIMIK 10



Wall sconce series. Fixtures consist of:

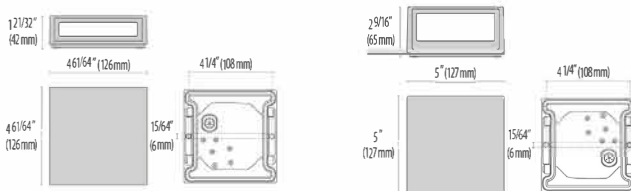
- Multi-step powder-coat painting process, optimized against UV rays and corrosion.
- Copper-free precision die-cast aluminum housing and mounting plate.
- Extra-clear, flat, tempered silk-screened soda-lime glass diffuser.
- Micro-prismatic patterned, flat, tempered silk-screened soda-lime glass diffuser (FLAT versions).
- Custom molded, anti-aging gasket(s).
- Stainless steel external hardware.
- Custom MCPCB utilized to maximize heat dissipation and promote a long LED life.
- High-transmittance transparent optics.
- DarkSky approved when ordered with single light emission only, and in 3000K or below.

- Single (M) or dual (B) light emission.
- IESNA Type III light distribution (FLAT).
- IESNA Type III light distribution.
- 20° x 20° beam angle (C/I).
- Input voltage: 120-277 V (50 / 60 Hz), integral driver.
- Customizing facade faceplate available (ordered separately).
- Consult factory for dimming options, custom finishes (please specify RAL color), and non-cataloged CCT (Kelvin) options.
- 5-year warranty.
- Marine Grade finish.
- Suitable for Natatorium applications.
- Consult factory for any Buy American Act (BAA) or Build America Buy America Act (BABAA) requirements.



## FINISHES

- AN-96 / Iron gray / Textured
- GR-94 / Aluminum metallic / Textured
- WH-87 / White / Textured
- BK-81 / Black / Textured
- RB-10 / Iron rust / Textured



MIMIK  
10 FLAT

MIMIK  
10

Scan here  
for installation  
instructions



WATTAGE	
MIMIK 10 M T3	5W
MIMIK 10 M T3	10W
MIMIK 10 M C/I	5W
MIMIK 10 M C/I	10W
MIMIK 10 FLAT M	5W
MIMIK 10 FLAT M	10W
MIMIK 10 FLAT B	10W
MIMIK 10 B C/I	10W
MIMIK 10 B C/I+T3	10W

LUMEN OUTPUT		2700K	3000K	3500K	4000K
MIMIK 10 M T3	5W	292	314	336	358
MIMIK 10 M T3	10W	505	542	579	617
MIMIK 10 M C/I	5W	307	349	390	432
MIMIK 10 M C/I	10W	607	653	699	745
MIMIK 10 FLAT M	5W	440	451	462	473
MIMIK 10 FLAT M	10W	751	771	790	810
MIMIK 10 FLAT B	10W	857	880	902	925
MIMIK 10 B C/I	10W	725	779	833	888
MIMIK 10 B C/I+T3	10W	657	707	756	806

## Order Guide - Mimik 10

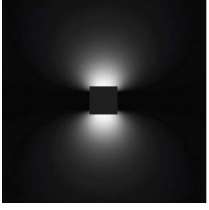
Order code example

**M10F-B-AM-27K-120V-NA**

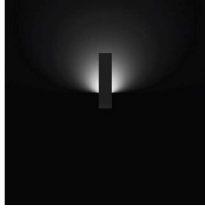
M10-								
Housing Style	Light Emission	Wattage	Optics	Finish	Kelvin	Voltage	Controls	Accessories
<b>M10</b> Standard  <b>M10F</b> Flat  <small>*Flat Housing is only suitable for T3 Distribution</small>	<b>M</b> (One-Way)  <b>B</b> (Two-Way)	<b>5W</b> 5 watts  <b>10W</b> 10 watts (max)  <b>XX</b> Specify wattage must be below max	Standard Housing only Select one for M & two for B  Leave Blank for Flat Housing  <b>T3</b> Type III  <b>T4</b> Type IV  <b>C/I</b> 20° beam  <b>10</b> 10° Beam  <b>40</b> 40° Beam  <b>56</b> 56° Beam	<b>AM</b> Aluminum Metallic  <b>IG</b> Iron Gray  <b>IR</b> Iron Rust  <b>BK</b> Textured Black  <b>WH</b> Textured White  <b>CC</b> Custom Color	<b>27K</b> 2700k  <b>3K</b> 3000k  <b>35K</b> 3500k  <b>4K</b> 4000k  <b>RED</b> Static Red  <b>GRN</b> Static Green  <b>BLU</b> Static Blue  <b>AMB</b> Static Amber 590nm  <b>RGBW</b> RGBW (flat only)	<b>UNV</b> 120-277V	(When selecting Flat housing with B (two-way) emissions, these options must be remote)  <b>NA</b> Non Dimming  <b>0-10V</b> 0-10V Dimming Driver  <b>ELV</b> 120V Line-Voltage Dimming Driver	(See pictures below)  <b>REM</b> Remote mounted Emergency battery back up  <b>RDR</b> Remote driver  <b>CON2</b> (double-gang j-box, adaptor plate and 1/2" knockouts)  <b>CON4</b> (double-gang j-box, adaptor plate and 3/4" knockouts)  <b>LVR</b> Internal Hex Louver (only suitable for T3 and T4 optics)  <b>BABAA</b> Build America Buy America Act compliant (not available for all options)  <b>PANEL OPTIONS</b> <b>SP</b> 8" Square Panel <b>L24</b> 24" Vertical Panel <b>L33</b> 33" Vertical Panel <b>RP</b> 7" Round Panel <b>Wedge</b> Wedge Panel <b>D-Wedge</b> Double Wedge Panel

80 CRI STANDARD - OTHER OPTIONS AVAILABLE

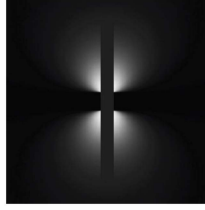
# MIMIK 10



Square Panel



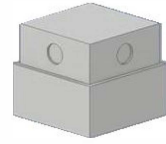
L24 Panel



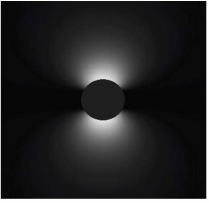
L33 Panel



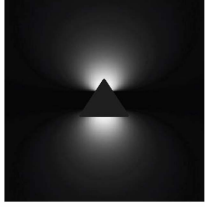
Signage Panel



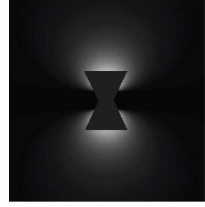
CON 2/4  
Surface Mounted  
J-box with Conduit  
Entry



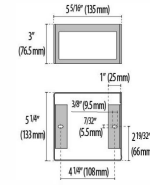
Round 7" Panel



Wedge Panel



Double Wedge Panel



Facade Cover

# REMOTE RGBW ACCESSORIES

## Power Supply



**17433**  
Kit driver 48V



**17096**  
Kit driver 48V WP

## RF Controls



**3104173**  
RGBW RF controller 4 channel  
(0.35A each CH)



**31041730**  
RGBW RF controller WP 4 channel  
(0.35A each CH)



**310429**  
RGBW hand held remote

## DMX Controls



**178973**  
RGBW DMX enabler/decoder 4  
channel (0.35A each CH)



**1789730**  
RGBW DMX enabler/decoder WP 4  
channel (0.35A each CH)



**11015**  
Terminating Resistor



**110150**  
Terminating Resistor WP