

AMON MINI



Pathway bollard series. Fixtures consist of:

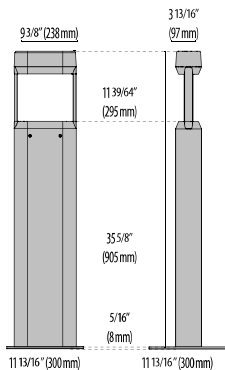
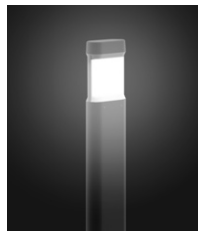
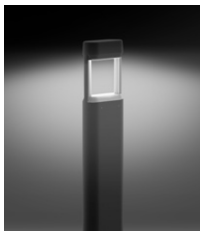
- Multi-step powder-coat painting process, optimized against UV rays and corrosion.
- Robust copper-free extruded aluminum column profile and copper-free precision die-cast aluminum housing, ring/faceplate, top cap, and inspection access door.
- Extra-clear, flat, tempered silk-screened soda-lime glass diffuser.
- Satin UV-stabilized, high-impact resistant diffuser (SOFT versions).
- Custom molded, anti-aging gasket(s).
- Stainless steel external hardware.
- High-efficiency COB, combined with an optimized passive cooling system, provides a long LED life.
- Internal specular reflector coated with 5-layers of PVD 99.98% pure aluminum providing >95% reflection.
- IESNA Type V light distribution.
- Diffuse light emission (SOFT).

- Input voltage: 120-277 V (50 / 60 Hz), integral 0-10 V dimming driver.
- Integral surge protector can withstand up to 10 kV transient line surge.
- Steel ground base plate included for bollards.
- Consult factory for dimming options, custom finishes (please specify RAL color), and non-cataloged CCT (Kelvin) options.
- Consult factory for custom post height options.
- Base heavy-duty covers, anchor bolts, and direct-burial support available for AMON MINI / MAXI (ordered separately).
- 5-year warranty.
- Suitable for Natatorium applications.
- Marine Grade finish.
- Consult factory for any Buy American Act (BAA) or Build America Buy America Act (BABAA) requirements.

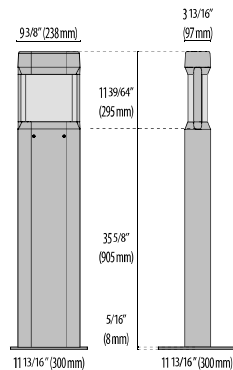


FINISHES

- AN-96 / Iron gray / Textured
- BK-81 / Black / Textured
- GR-94 / Aluminum metallic / Textured
- WH-87 / White / Textured
- RB-10 / Iron rust / Textured



AMON
MINI



AMON
MINI SOFT



Scan here
for installation
instructions

Lumen Output	27K	3K	35K	4K	5k
Amon Mini Soft	1293	1314	1335	1357	1378
Amin Mini T5	1932	1963	1994	2025	2056

45W Max Wattage

Order Guide - Amon Mini



Order code example

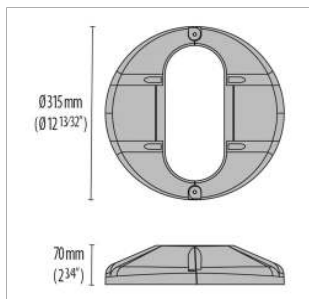
AMI-47-OPEN-40-AM-3K-120-NA-BC-ANC

AMI-

Bollard Height	Optics	Wattage	Finish	Kelvin	Voltage	Controls	Accessories
24 24 inch (min with remote driver)	OPEN Type V	12 12 watt	AM Aluminum Metallic	27K 2700k	UNV 120-277V	NA Non Dimming	BC Base Cover
35 35 Inch (min with integral driver)	SOFT Type V Diffuse	20 20 watt	IG Iron Gray	3K 3000k			
47 47 Inch (standard)		40 40 watt	IR Iron Rust	35K 3500k		0-10V 0-10V Dimming	DB Direct Burial
XX Specify Height Must be below standard		45 45 watt (max)	BK Textured Black	4K 4000k			
For taller options refer to AMON MICRO SPEC		XX Specify Wattage Must be below max	WH Textured White	5K 5000k		ELV 120V Line-Voltage Dimming Driver	HSS House Side Shield
			CC Custom Color	RED Static Red			
				BLU Static Blue		For more Options Contact Factory	LOGO Custom Logo
				GRN Static Green			
				AMB 590nm Amber (turtle-friendly)			PHC1 120V Photocell
							OCC1 on/off Occupancy Sensor
							OCC2 hi/lo Occupancy Sensor
							BABAA Build America Buy America Act compliant (not available for all options)
							ND REMOTE DRIVER

80 CRI STANDARD - OTHER OPTIONS AVAILABLE

OPTIONAL ACCESSORIES



Base Cover



Anchor Bolts w/ template



Direct Burial Base

Ø0.64" x 17" long
3" hook
Top 3.25" threaded

Performance in Lighting reserves the right to make all necessary changes without prior notice.

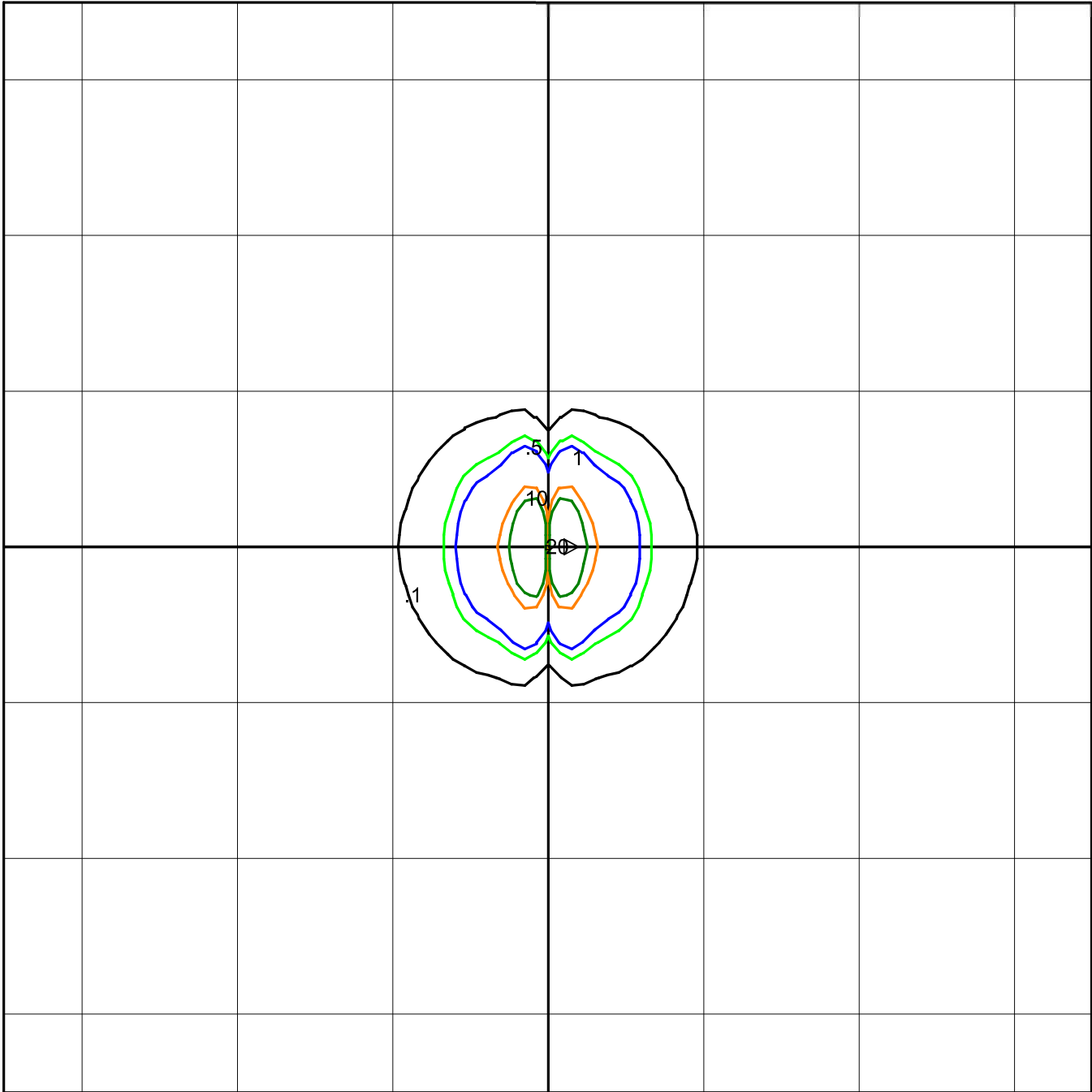
Performance in Lighting - 2621 Keys Pointe - Conyers, Georgia 30013 - USA - voice 770.822.2115 - info.usa@pil.lighting
www.performanceinlighting.com

Revision 15
06/25

AMON MINI T5

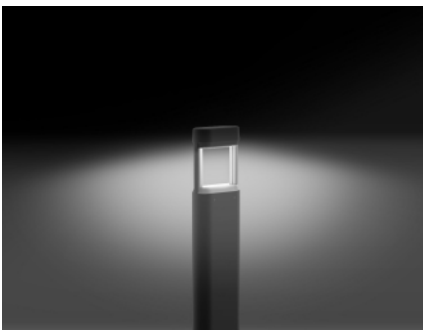
PERFORMANCE
iN LIGHTING

powered by
GEWISS



Performance iN Lighting USA
070275
AMON MINI TYPE V 45W 4000K 0-10V AN-96
AMON MINI 36 S/W840 AN-96AD RE

Horizontal Footcandles
Scale: 1 Inch = 10 Ft.
Light Loss Factor = 0.90
Lumens Per Lamp = 2024.74
Total Lamp Lumens = 2024.74
Mounting Height = 3.00 Ft
Maximum Calculated Value = 119.12 Fc
Arrangement: Single

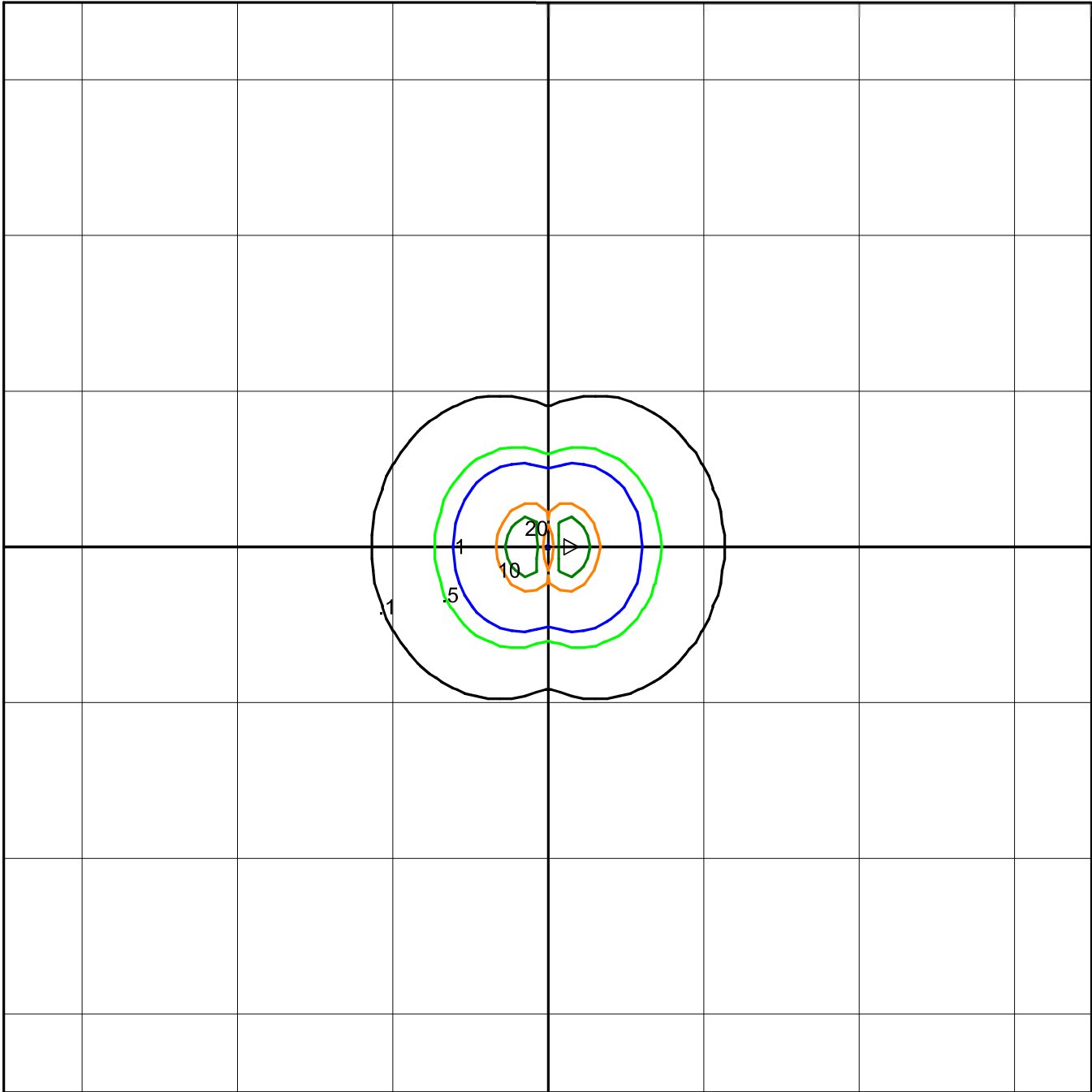


Revision 15
06/25

AMON MINI SOFT T5

PERFORMANCE
iN LIGHTING

powered by
GEWISS



Performance iN Lighting USA
070254
AMON MINI SOFT TYPE V 45W 4000K 0-10V AN-96
AMON MINI_S_36S/W840AN-96AD RE

Horizontal Footcandles
Scale: 1 Inch = 10 Ft.
Light Loss Factor = 0.90
Lumens Per Lamp = 1357.31
Total Lamp Lumens = 1357.31
Mounting Height = 3.00 Ft
Maximum Calculated Value = 46.25 Fc
Arrangement: Single



Revision 15
06/25