



MASK+ | WALL MOUNTED

PRODUCT CODE

PROJECT

TYPE

PERFORMANCE
iN LIGHTING

PERFORMANCE **in** LIGHTING

Light sculpts the surrounding area to emphasize the meticulous planning that has gone into every piece of architecture. Aesthetics and function combine to create products that will satisfy the needs of the most ambitious of projects. Lighting becomes an integral part of the creative and design process, shaping nuances by highlighting texture and detail, becoming part of the construction process by perfectly complementing its architectural design.

Urban environments, roads, infrastructure, sporting venues, to name just a few. These are complex areas that call for an integrated lighting approach, parking lots, squares, green areas, every space that makes up the urban environment requires the right level of lighting, for a safer environment. Smart buildings and a variety of engineered lighting options provide the best results.



All products are covered by a 5-year warranty, provided that they are used and maintained according to instructions. Consumable materials, such as bulbs, starters, electronic ignitors and reactors, which are compliant with warranty regulations issued by the European Directive on the subject, are not included in the warranty.

Focus on quality, safety and duration in time are the essential objectives of Performance in Lighting.

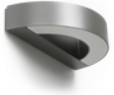
For additional information, go to www.performanceinlighting.com



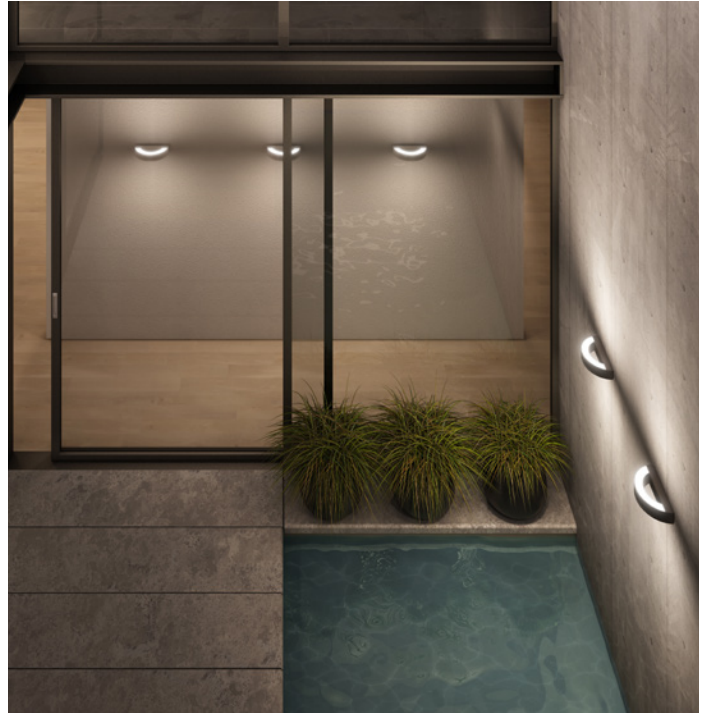
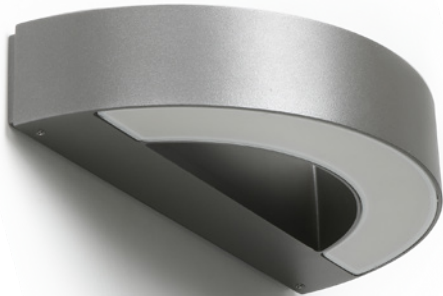
PIL offers a wide range of quick ship fixtures through the Pronto Program and a host of options to fit within the unique budget of your next project.

INDEX

WALL MOUNTED



MASK+
4



Wall sconce series. Fixtures consist of:

- Multi-step powder-coat painting process, optimized against UV rays and corrosion.
- Copper-free precision die-cast aluminum housing and mounting plate.
- Frosted, flat, tempered silk-screened soda-lime glass diffuser.
- Custom molded, anti-aging gasket(s).
- Stainless steel external hardware.
- Custom MCPCB utilized to maximize heat dissipation and promote a long LED life.
- Single (M) or dual (B) light emission.
- IESNA Type V light distribution.

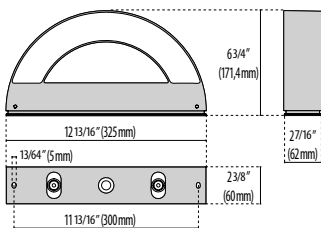
- Input voltage: 120-277 V (50 / 60 Hz), integral 0-10 V dimming driver.
- Rectangular mounting plate included (for use RACO 8660 or equivalent); 4" tall accessory plate for use with larger junction box applications available (order separately).
- Consult factory for dimming options, custom finishes, and non-cataloged CCT (Kelvin) options.
- Product meets Buy American Act requirements within ARRA.
- 5-year warranty.



- **AN-96** / Iron gray / Textured
- **WH-87** / White / Textured

Please add:

- **BK-81** / Black / Textured
- **GR-94** / Aluminum metallic / Textured
- **RB-10** / Iron rust / Textured



MASK+



Please visit our web site
www.performanceinlighting.com
for the latest updated versions available.

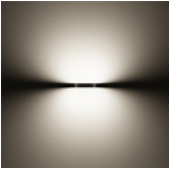
MASK+ M

WATTAGE	DLC	VOLTAGE	CRI	KELVIN	OPTIC	OPTIC BEAM	LIGHTSOURCE LUMEN OUTPUT	LUMINAIRE LUMEN OUTPUT	L	B	LIFETIME	FINISH	PART NUMBER
Mid Power LEDS 120-277 V - Dimmable 0-10 V													
12.5 W	-	120-277 V	80	4000	-	-	1668 lm	971 lm	70	10	50000 h	●	072032
12.5 W	-	120-277 V	80	3000	-	-	1552 lm	914 lm	70	10	50000 h	●	072031
12.5 W	-	120-277 V	80	4000	-	-	1668 lm	971 lm	70	10	50000 h	○	072034
12.5 W	-	120-277 V	80	3000	-	-	1552 lm	914 lm	70	10	50000 h	○	072033



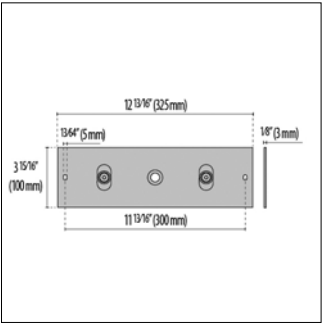
MASK+ B

WATTAGE	DLC	VOLTAGE	CRI	KELVIN	OPTIC	OPTIC BEAM	LIGHTSOURCE LUMEN OUTPUT	LUMINAIRE LUMEN OUTPUT	L	B	LIFETIME	FINISH	PART NUMBER
Mid Power LEDS 120-277 V - Dimmable 0-10 V													
24 W	-	120-277 V	80	4000	-	-	3336 lm	1879 lm	70	10	50000 h	●	072036
24 W	-	120-277 V	80	3000	-	-	3104 lm	1770 lm	70	10	50000 h	●	072035
24 W	-	120-277 V	80	4000	-	-	3336 lm	1879 lm	70	10	50000 h	○	072038
24 W	-	120-277 V	80	3000	-	-	3104 lm	1770 lm	70	10	50000 h	○	072037



OPTIONAL ACCESSORIES

DESCRIPTION	FINISH	PART NUMBER
MASK+		
4-inch Tall Accessory Plate	●	3101273
4-inch Tall Accessory Plate	○	3101309



3101273
3101309



PERFORMANCE IN LIGHTING

2621 Keys Pointe
Conyers, GA 30013 - United States
Ph 770.822.2115
Fax 770.822.9925

www.performanceinlighting.com