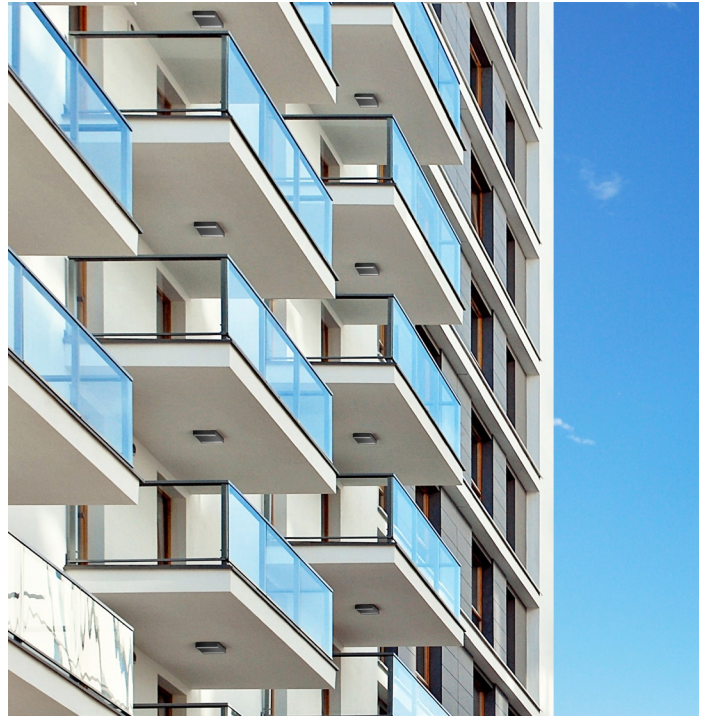
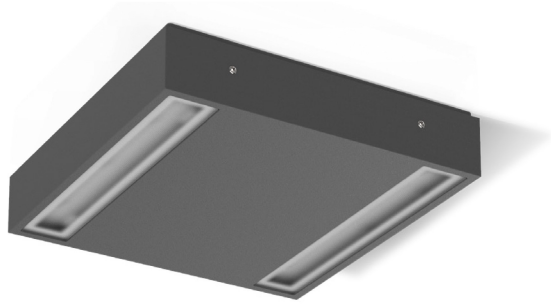


MIMIK 20 CEILING



Ceiling- and wall- mount series. Fixtures consist of:

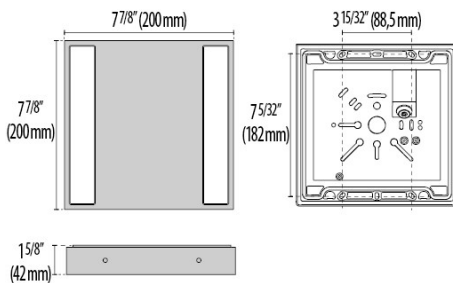
- Multi-step powder-coat painting process, optimized against UV rays and corrosion.
- Copper-free precision die-cast aluminum housing and mounting plate.
- Micro-prismatic patterned, flat, tempered silk-screened soda-lime glass diffuser (FLAT versions).
- Custom molded, anti-aging gasket(s).
- Stainless steel external hardware.
- Custom MCPCB utilized to maximize heat dissipation and promote a long LED life.

- 100° x 100° beam angle (S/EW).
- Input voltage: 120-277 V (50 / 60 Hz), integral 0-10 V dimming driver.
- Consult factory for dimming options, custom finishes (please specify RAL color), and non-cataloged CCT (Kelvin) options including static colors.
- Product meets Buy American Act requirements within ARRA.
- 5-year warranty.
- Marine Grade finish.
- Suitable for Natatorium applications.



FINISHES

- AN-96 / Iron gray / Textured
- GR-94 / Aluminum metallic / Textured
- WH-87 / White / Textured
- BK-81 / Black / Textured
- RB-10 / Iron rust / Textured



MIMIK
20 CEILING

Lumen Output	27K	3K	35K	4K	5K
Mimik 20 Ceiling	1844	1869	1893	1918	1942

Order Guide - Mimik 20 Ceiling



Order code example

M20C-24-AM-3K-120-NA

M20C

Wattage	Finish	Kelvin	Voltage	Controls	Accessories
24W 24 watt (max) XX Specify Wattage Must be below max	AM Aluminum Metallic	27K 2700k	120 120 volts	NA Non Dimming	
	IG Iron Gray	3K 3000k	277 277 volts	0-10V 0-10V Dimming	
	IR Iron Rust	35K 3500k		ELV ELV Dimming	
	BK Textured Black	4K 4000k			
	WH Textured White	5K 5000k			
	CC Custom Color	65K 6500k			
		RED Static Red			
		GRN Static Green			
		BLU Static Blue			
		AMB Static Amber			