



**QUASAR**

WALL MOUNTED | CEILING SURFACE MOUNTED

PRODUCT CODE

---

PROJECT

---

TYPE

---

PERFORMANCE  
**in** LIGHTING

powered by  
**GEWISS**



## Company

Performance in Lighting USA, located in Conyers, GA, is part of an international group of companies headquartered in Verona, Italy.

The group was formed from a number of well-established technical lighting companies from various countries. Performance in Lighting has a wide sales and distribution network operating in over 100 countries worldwide. Production facilities are located in Verona Italy, Bergamo Italy, Goslar Germany, Brussels Belgium, Conyers GA USA. Sales/distribution subsidiaries are located in England, Holland, France, Finland, Spain, Portugal, Australia, Dubai and Japan.

Recognized for its unique professional approach and technical know-how, Performance in Lighting has combined its international experience and technical expertise to become a worldwide leader in its industry. The group offers various lighting solutions worldwide for many applications including interior, exterior, residential, commercial, and sports lighting providing options to satisfy both architectural and engineering requirements.

Performance in Lighting USA concentrates on specification grade luminaires designed to provide a vast array of lighting solutions. Our concentration is outdoor products for illuminating commercial spaces from structural facades to parking areas. We strive to meet the demands of today's lighting community offering made in USA products, European designed with clean, contemporary aesthetics along with aggressive price points and fast lead times.

## Pronto Program

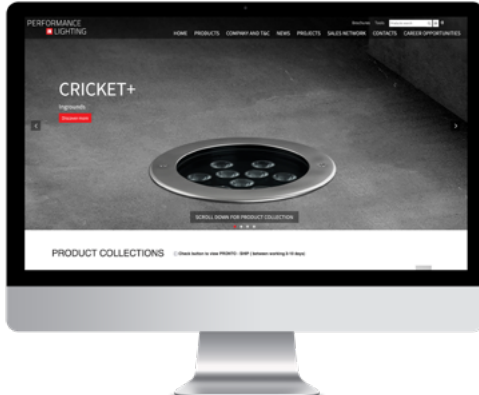
PERFORMANCE IN LIGHTING offers a wide range of quick ship fixtures through the Pronto Program and a host of options to fit within the unique budget of your next project.





## Overview

Click the QR-code for latest information.



## Website

Please visit our web site [www.performanceinlighting.com/us/us/](http://www.performanceinlighting.com/us/us/) for the latest updated versions available.



## 5-year warranty

All products are covered by a 5-year warranty, provided that they are used and maintained according to instructions. Focus on quality, safety and product lifetime/longevity are the essential objectives of PERFORMANCE IN LIGHTING. For additional information, email [info.usa@pil.lighting](mailto:info.usa@pil.lighting)

# QUASAR

## Rhythm on the wall

The QUASAR family was born from the idea that the cleanest design is sometimes all that a project calls for. This simple fixture in four different sizes applies to almost every project that you will find yourself working on. The QUASAR 10 gives you the dramatic punch you want in a compact package and at a price point that any project allows for. With the chance to customize everything from the beams and apertures to the color of the glass, this is the little fixture that does it all and does it in the most energy-efficient and cost-efficient way. The QUASAR 20, with options for dual or mono distribution, takes a little more serious approach in a slightly bigger body and yet maintains that ability for you to tailor it with a variety of color choices for your unique design needs. The QUASAR 30 gives you dimming in addition to the unique customized aperture and color opportunities as the smaller versions. The QUASAR 60 rounds out the series with multiple wattage options, integral 90 minute emergency battery pack, and single and dual emission options. With so much variety in one cost conscious series, the QUASAR is a choice well made.





Cloverbelt credit union Wisconsin | Wisconsin | USA

# QUASAR

Design-coordinated ceiling mount (QUASAR 30 CEILING), wall effect (QUASAR 10) and wall sconce (QUASAR 20 / 30 / 60) series. Fixtures consist of:

## CONSTRUCTION

- Multi-step powder-coat painting process, optimized against UV rays and corrosion.
- Copper-free precision die-cast aluminum housing and mounting plate.
- High-efficiency COB, combined with an optimized passive cooling system, provides a long LED lifespan (QUASAR 20 / 30). Internal reflector coated with 5-layers of PVD 99.98% pure aluminum providing >95% reflection. Custom MCPCB utilized to maximize heat dissipation and promote a long LED lifespan (QUASAR 10 / 60). Extra-clear, flat, tempered silk-screened soda-lime glass diffuser (QUASAR 10). Micro-prismatic patterned, flat, tempered silk-screened soda-lime glass diffuser (QUASAR 20 / 30 / 60).
- Custom molded, anti-aging gasket(s).
- Stainless steel external hardware.

## INSTALLATION

- Available in four standard lengths of 4" (QUASAR 10), 8" (QUASAR 20), 12" (QUASAR 30) and 24" (QUASAR 60). Overall standard height of 4" and depth of 4".
- Junction box mounting plate included (for 4" octagon box only, provided by others).

## OPTICS

- Surface light-effect emission (QUASAR 10). Type I (QUASAR 20 / 30), Type II (QUASAR 60 M / B), and Type III (QUASAR 60 TECH / DOUBLE TECH) light distributions. Diffuse light emission for ceiling version (QUASAR 30 CEILING).

## ELECTRICAL

- Input voltage: 120-277 V (50 / 60 Hz), integral driver (QUASAR 10); 120-277 V (50 / 60 Hz), integral 0-10 V dimming driver (QUASAR 20 / 30 / 60).

## OPTIONS

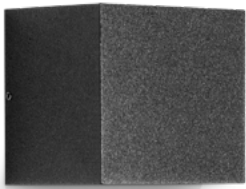
- The luminaire may be configured with numerous options and multiple standard finishes. Not all options are available in all configurations. Consult factory for more information about specification sheet details.

## LISTINGS

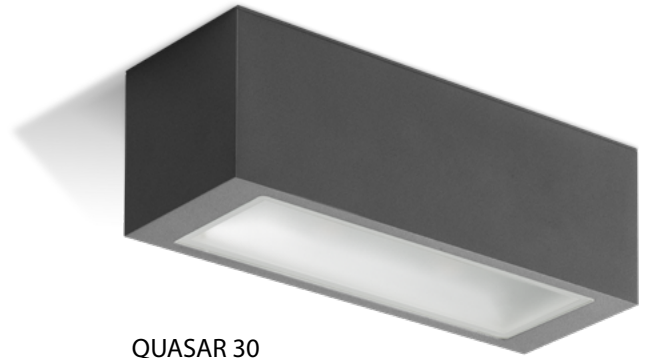
- UL Wet location listed. IP44 rated (QUASAR 10).
- UL Wet location listed. IP65 rated.
- Product meets Buy American requirements within ARRA.
- ADA compliant.
- Consult factory for which version qualifies for the PRONTO-SHIP program. All Rough-Ins are available to ship within 48-72 hrs. Orders must be marked "PRONTO."
- Photometric data measured according to UNI EN 13032-1/4 and IES LM-79-08
- Actual performance may differ as a result of the end-user environment and application. All values are design or typical values, measured under laboratory conditions at 25 °C. Specifications are subject to change without notice.

## WARRANTY

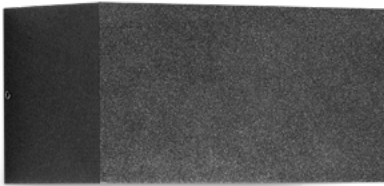
- 5-year limited warranty. Complete warranty terms located at [www.performanceinlighting.com](http://www.performanceinlighting.com)



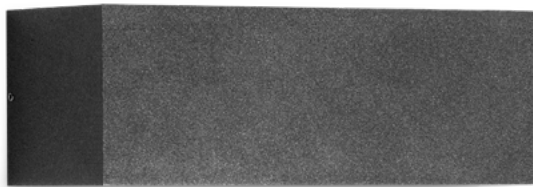
QUASAR 30



QUASAR 30



QUASAR 30

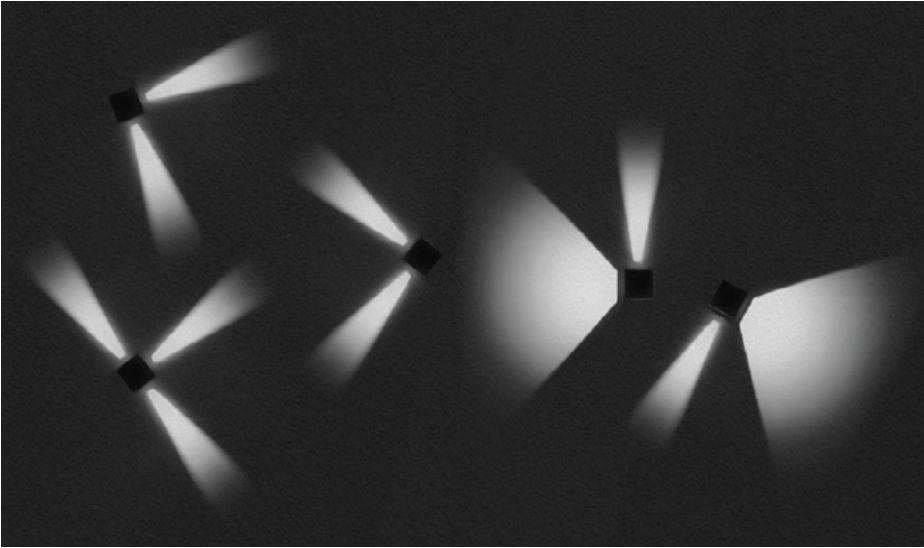


QUASAR 30

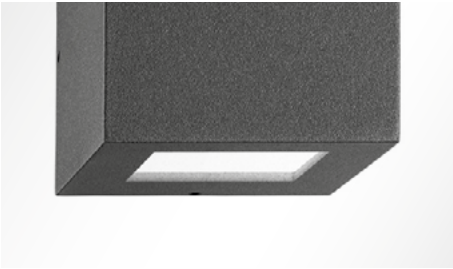


QUASAR 30

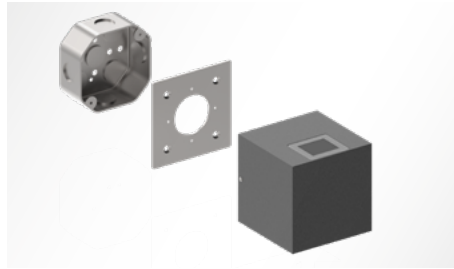
# QUASAR 10



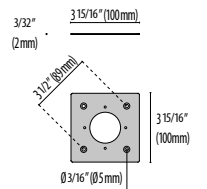
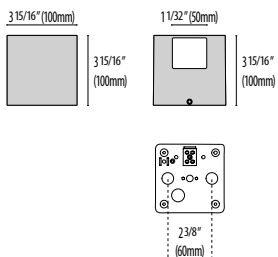
Consult factory for light emission options



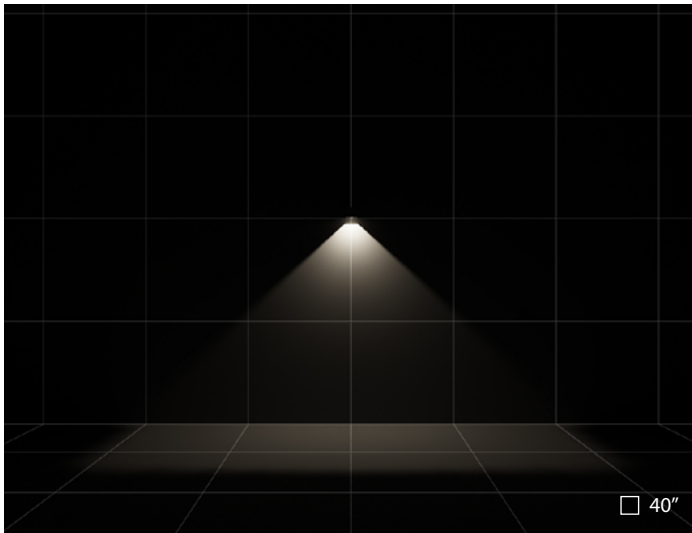
Extra-clear, flat, tempered silk screened soda-lime glass diffuser.



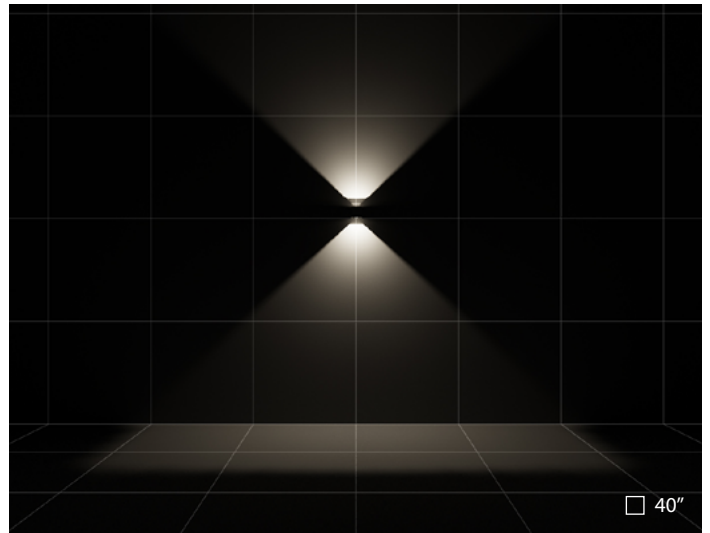
Junction box mounting plate included (for 4" octagon box only, provided by others).



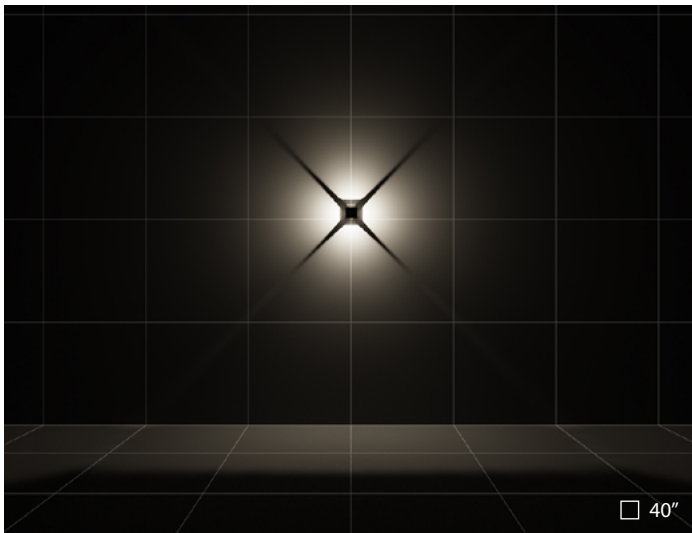




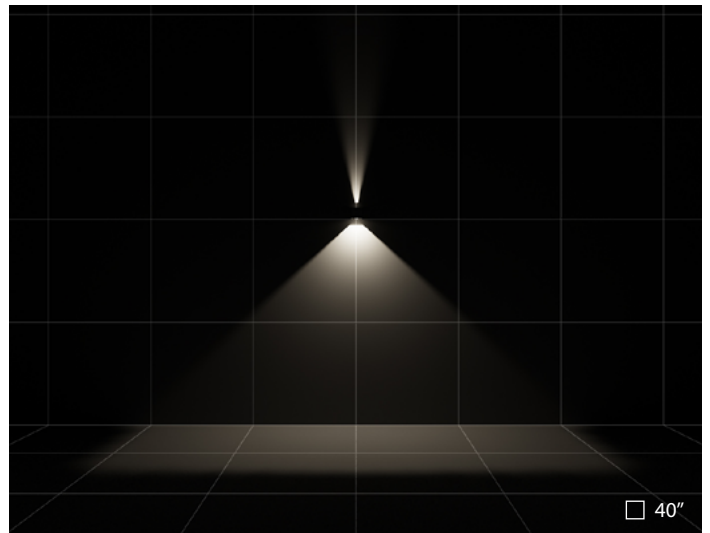
QUASAR 10 | 1WB



QUASAR 10 | 2WB



QUASAR 10 | 4WB



QUASAR 10 | 1NB+1WB

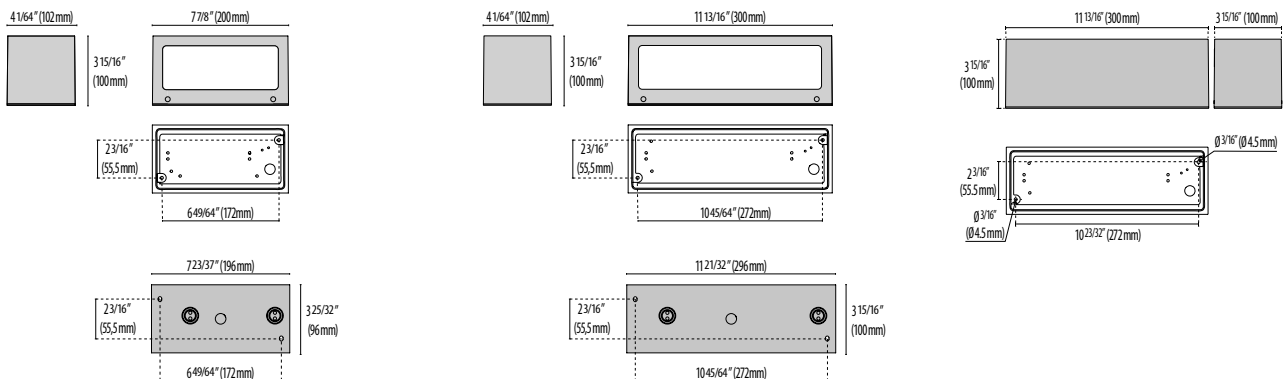
# QUASAR 20 / 30 / 30 CEILING

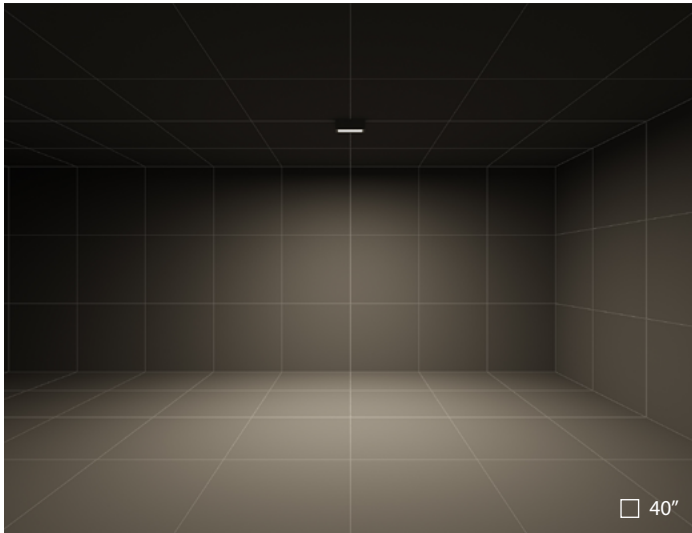


Flat microprismatic glass diffuser internally pattern for TECH / DOUBLE TECH versions.

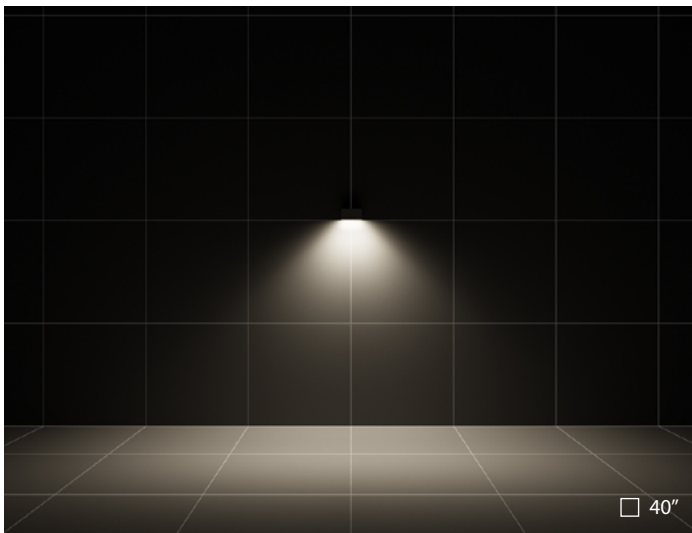


Junction box mounting plate included.

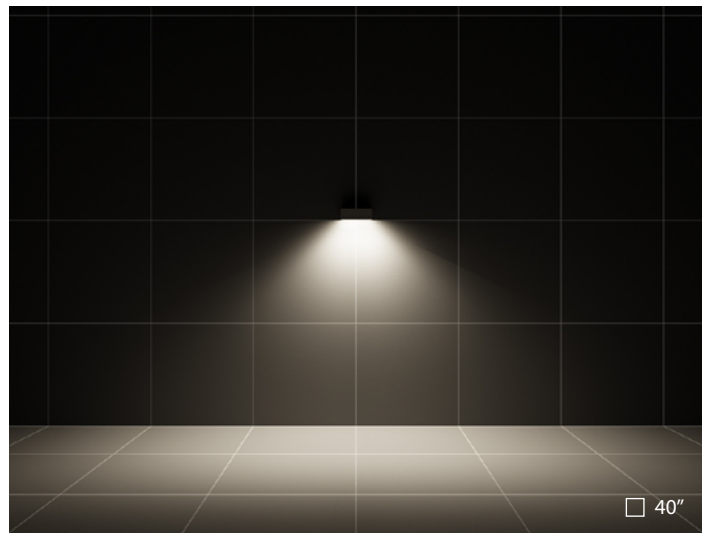




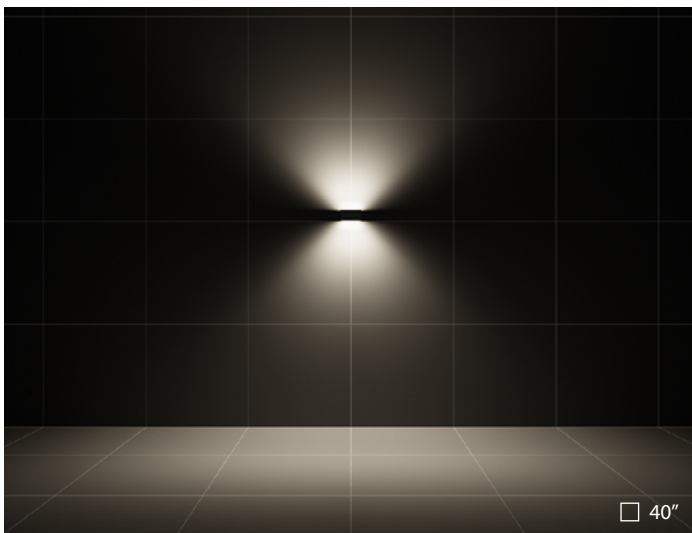
QUASAR 30 CEILING | 95°x95° Symmetric Extra-Wide optics



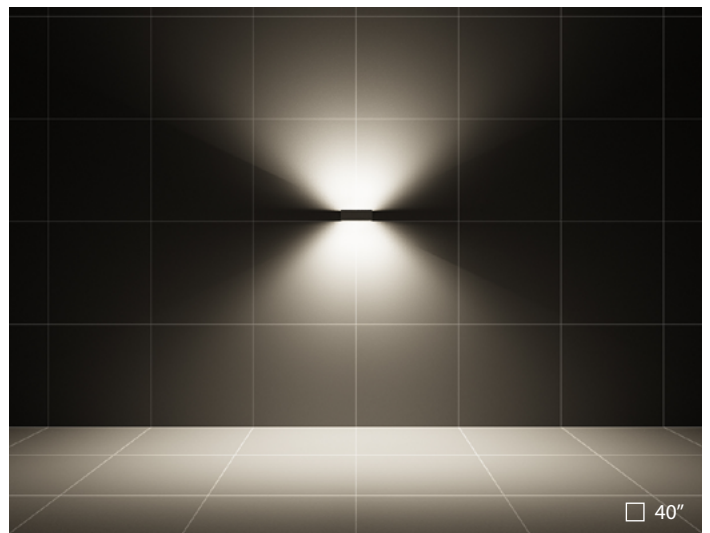
QUASAR 20 TECH | TYPE I



QUASAR 30 TECH | TYPE I

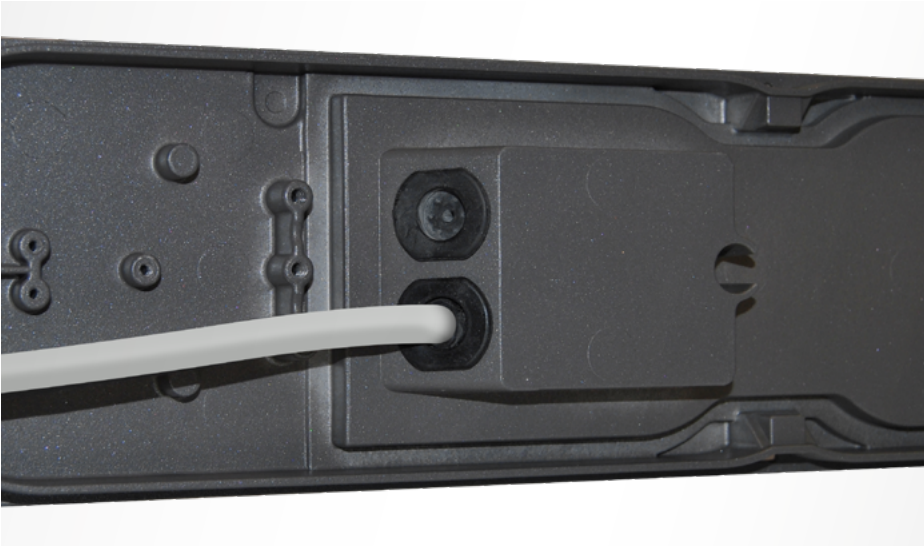


QUASAR 20 DOUBLE TECH | TYPE I

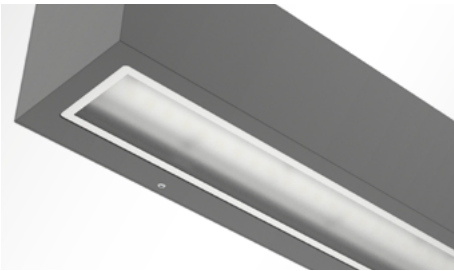


QUASAR 30 DOUBLE TECH | TYPE I

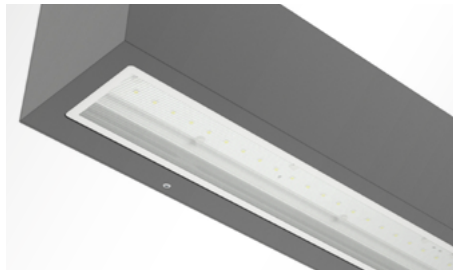
# QUASAR 60



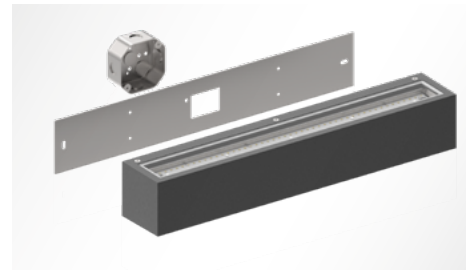
The fixture is suitable for through-wiring.



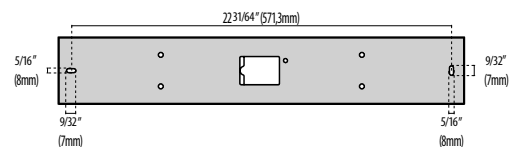
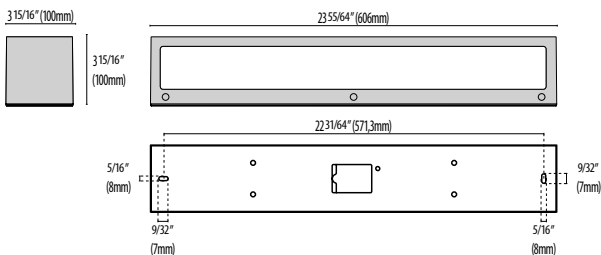
Glass diffuser, internally painted for homogeneous diffused light for M / B versions.

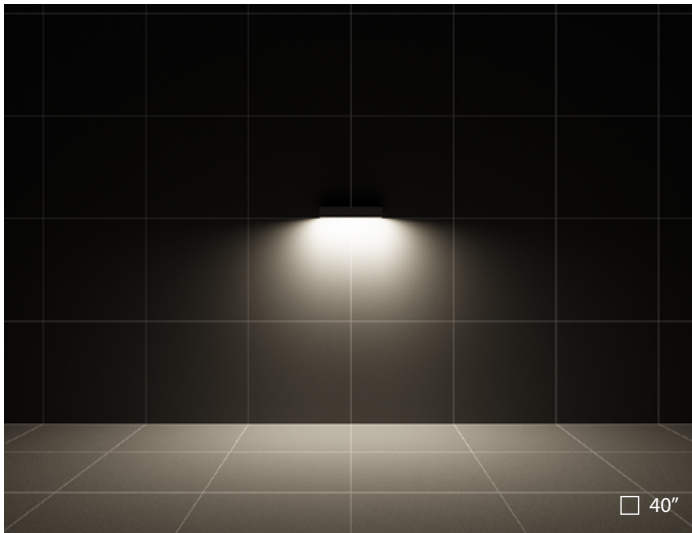


Flat microprismatic glass diffuser internally pattern for TECH / DOUBLE TECH versions.

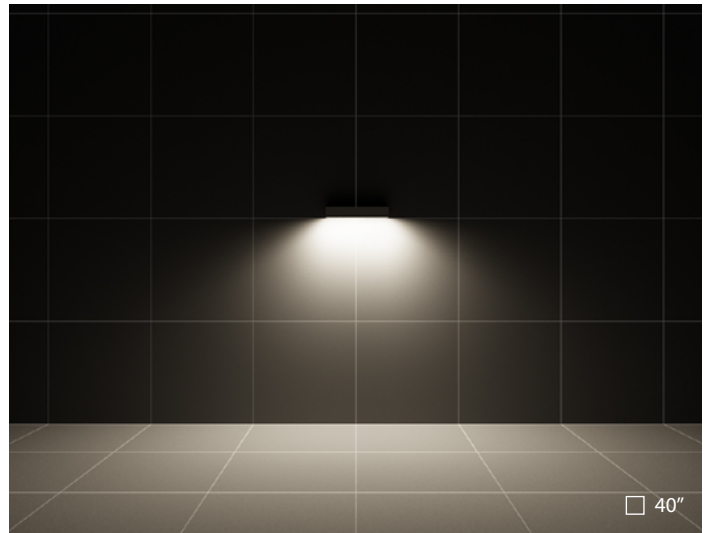


Junction box mounting plate included.

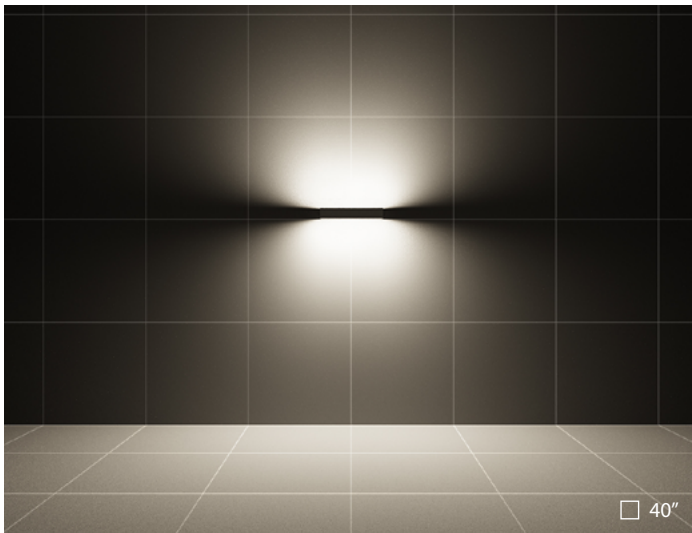




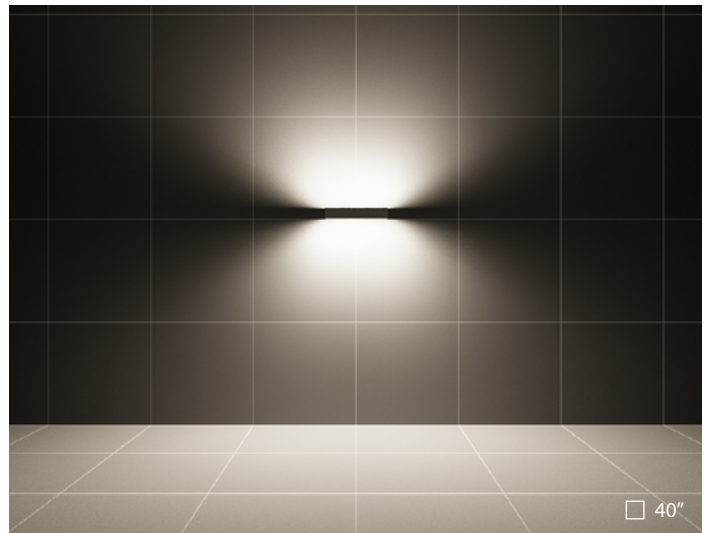
QUASAR 60 M | Asymmetric Extra-Wide optics | TYPE II



QUASAR 60 TECH | Asymmetric Extra-Wide optics | TYPE II



QUASAR 60 B | Asymmetric Extra-Wide optics | TYPE II



QUASAR 60 DOUBLE TECH | Asymmetric Extra-Wide optics | TYPE II

PERFORMANCE  
**IN** LIGHTING

powered by  
**GEWISS**

**PERFORMANCE IN LIGHTING**  
2621 Keys Pointe  
Conyers, GA 30013 - United States  
Ph 770.822.2115  
Fax 770.822.9925

[www.performanceinlighting.com](http://www.performanceinlighting.com)