



GUELL

FLOODLIGHTS | WALL MOUNTED | AREA LIGHTING

PRODUCT CODE

PROJECT

TYPE

PERFORMANCE
in LIGHTING

powered by
GEWISS



Company

Performance in Lighting USA, located in Conyers, GA, is part of an international group of companies headquartered in Verona, Italy.

The group was formed from a number of well-established technical lighting companies from various countries. Performance in Lighting has a wide sales and distribution network operating in over 100 countries worldwide. Production facilities are located in Verona Italy, Bergamo Italy, Goslar Germany, Brussels Belgium, Conyers GA USA. Sales/distribution subsidiaries are located in England, Holland, France, Finland, Spain, Portugal, Australia, Dubai and Japan.

Recognized for its unique professional approach and technical know-how, Performance in Lighting has combined its international experience and technical expertise to become a worldwide leader in its industry. The group offers various lighting solutions worldwide for many applications including interior, exterior, residential, commercial, and sports lighting providing options to satisfy both architectural and engineering requirements.

Performance in Lighting USA concentrates on specification grade luminaires designed to provide a vast array of lighting solutions. Our concentration is outdoor products for illuminating commercial spaces from structural facades to parking areas. We strive to meet the demands of today's lighting community offering made in USA products, European designed with clean, contemporary aesthetics along with aggressive price points and fast lead times.

Pronto Program

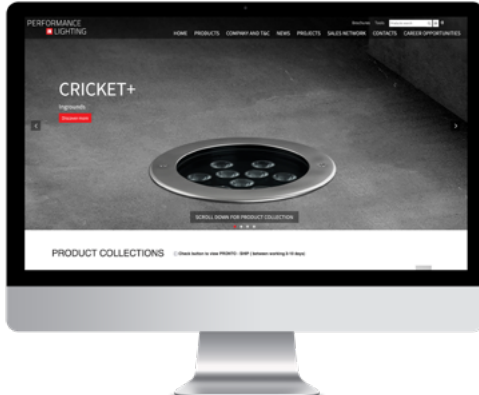
PERFORMANCE IN LIGHTING offers a wide range of quick ship fixtures through the Pronto Program and a host of options to fit within the unique budget of your next project.





Overview

Click the QR-code for latest information.



Website

Please visit our web site www.performanceinlighting.com/us/us/ for the latest updated versions available.



5-year warranty

All products are covered by a 5-year warranty, provided that they are used and maintained according to instructions. Focus on quality, safety and product lifetime/longevity are the essential objectives of PERFORMANCE IN LIGHTING. For additional information, email info.usa@pil.lighting

GUELL

The more the better

The GUELL Floodlight Series of fixtures offers a high-quality fixture fabrication at a cost-effective price providing significant delivered lumens and these high output fixtures do more than provide exceptional light, they look great with the lights off too. With a contemporary die-cast body design and high-performance reflectors, you can choose from an assortment of mounting options and use these beautiful fixtures everywhere from your parking lots and sports areas to signage and egress lighting. The GUELL offers a higher quality of light using fewer watts and better optics. With various symmetric and asymmetric beam options as well as integral photocontrol and motion sensor options, the GUELL is the perfect fit for your high lumen fixture demands.

The main focus of this product family is to offer an immense reduction in power consumption, resulting in an improved total cost of investment thanks to a long service lifetime of the electrical components, sourced from reliable and well-established sources, and to an innovative passive cooling thermal management system.

Easy mounting options such as swivel arms for adjustable wall or roof mounting are perfect for area and sign lighting; slipfitters for pole top or bullhorn mounting ideal for landscape and signs round out the product family offering to make this suitable for almost every applications.





Schierker Feuerstein arena | Wernigerode | Germany

GUPELL

Long-lasting energy-efficient architectural, landscape and professional flood light series. Fixtures consist of:

CONSTRUCTION

- Copper-free precision die-cast aluminum housing, and adjustable steel mounting bracket.
- High-efficiency COB, combined with an optimized passive cooling system, provides a long LED life.
- Internal specular reflector coated with 5-layers of PVD 99.98% pure aluminum providing >95% reflection.
- Extra-clear, tempered, silk-screened, flat glass diffuser.
- Custom molded, anti-aging gasket(s).
- Stainless steel external hardware.

INSTALLATION

- Available in four standard size of H9" x L8.2" x D2.3" (GUPELL ZERO), H12.6" x L9.2" x D3.3" (GUPELL 1), H12.6" x L14.5" x D3.3" (GUPELL 2), H19.7" x L22.2" x D3.9" (GUPELL 3) and H22.4" x L22.2" x D3.9" (GUPELL 4).
- Pre-wired factory sealed cable for external electrical connection included.
- Standard quick release latch(es) allow for tool-free access.
- Standard swivel arm (GUPELL ZERO / 1 SA versions) and slip-fitter (GUPELL 2 / 3 SF versions) for simplified installation.
- Louver, frosted glass, protective grid, wall support 19.69" / 39.37", single or double pole top support, and matching junction box plate accessories available (ordered separately).

OPTICS

- NEMA 6H x 5V, 7H x 5V, 7H x 6V, 7H x 7V and 6H x 5V light distributions..

ELECTRICAL

- Input voltage: 120-277 V (50 / 60 Hz), integral driver (GUPELL 4); 120-277 V (50 / 60 Hz), integral 0-10V dimming driver (GUPELL 1 / 2 / 3) and 120-277 V (50 / 60 Hz), integral 1-10V dimming driver (GUPELL ZERO).

OPTIONS

- The luminaire may be configured with numerous options and multiple standard finishes. Not all options are available in all configurations. Consult factory for more information about specification sheet details.

LISTINGS

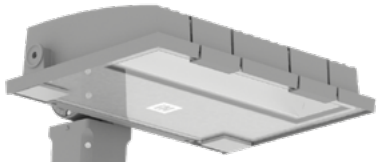
- UL Wet location listed. IP66 rated.
- Product meets Buy American requirements within ARRA.
- Consult factory for which version qualifies for the PRONTO-SHIP program. All Rough-Ins are available to ship within 48-72 hrs. Orders must be marked "PRONTO."
- Photometric data measured according to UNI EN 13032-1/4 and IES LM-79-08
- The light distribution complies with the IESNA Full Cut-Off Classification and is eligible for all "Dark Sky" applications when aimed down.
- Actual performance may differ as a result of the end-user environment and application. All values are design or typical values, measured under laboratory conditions at 25 °C. Specifications are subject to change without notice.
- DesignLights Consortium® (DLC) qualified product. Not all versions of this product may be DLC qualified. Please check the DLC Qualified Products List at www.designlights.org to confirm which versions are qualified.

WARRANTY

- 5-year limited warranty. Complete warranty terms located at www.performanceinlighting.com



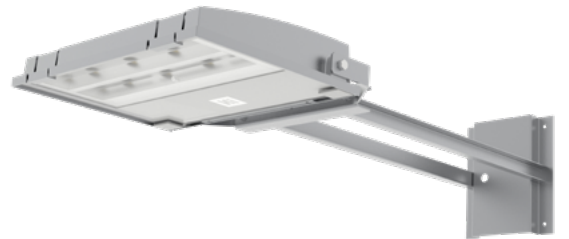
GUELL 3



GUELL 2



GUELL 1



GUELL ZERO SA



Multi-step powder-coat painting process, optimized against UV rays and corrosion.



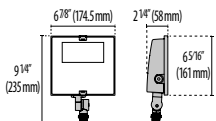
Standard robust 1/2" NPS knuckle mount with 180° adjustable swivel arm (SA versions) and rugged, locking teeth for a simplified installation.



Copper-free precision die-cast aluminum housing, ring/faceplate, and adjustable mounting arm.

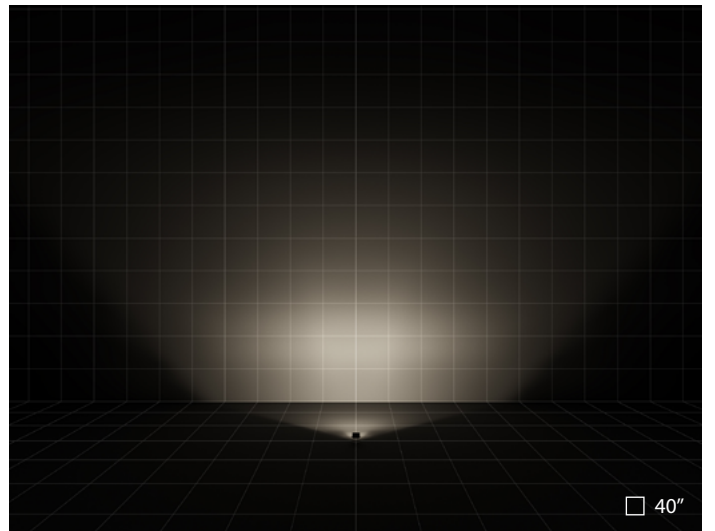
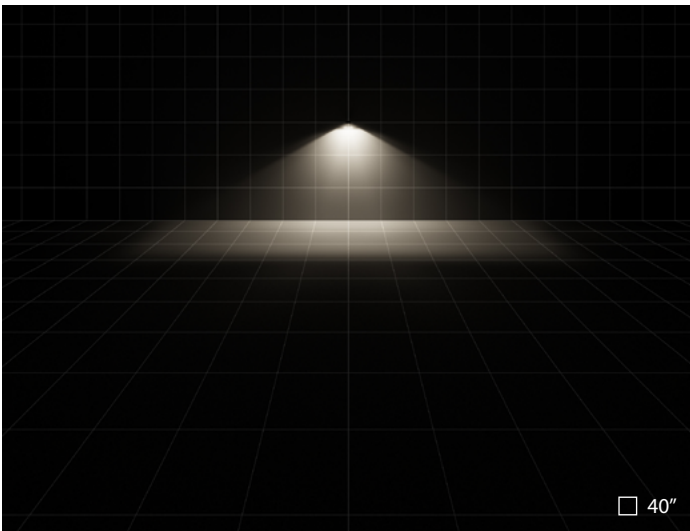


Pre-wired cable is factory sealed to housing with a cable gland allowing external electrical connections.



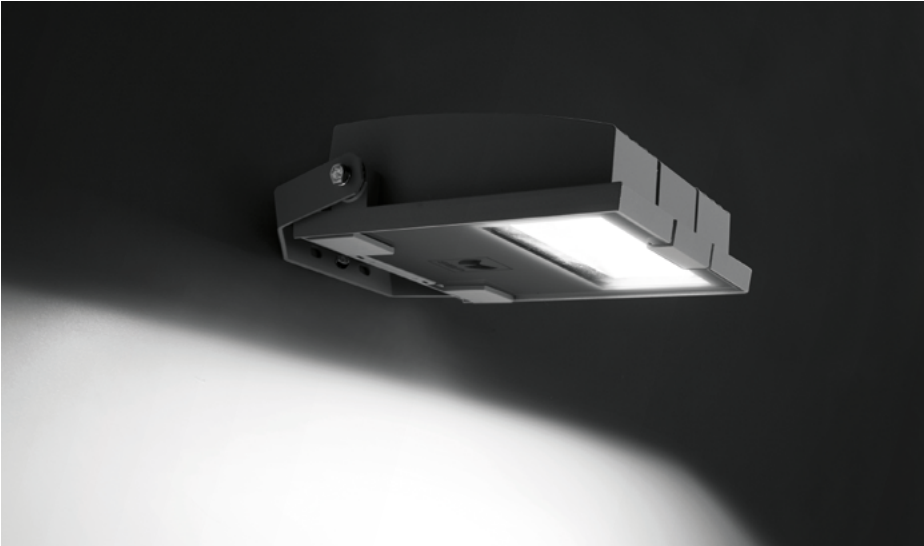


Frasassi cave | Genga | Italy



GUELL ZERO | TYPE II | NEMA 6H x 5V

GUELL 1



The light distribution complies with the IESNA Full Cut-Off Classification and is eligible for all "Dark Sky" applications when aimed down.



Standard swivel arm (SA versions) for a simplified installation.



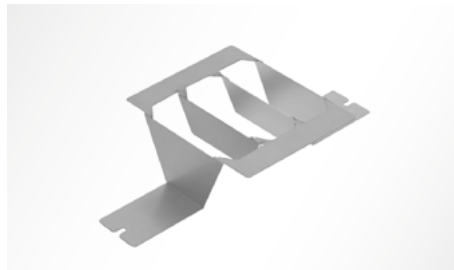
Standard flush-mounted quick release latch(es) for tool-free access.



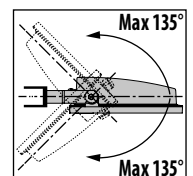
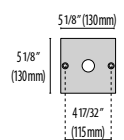
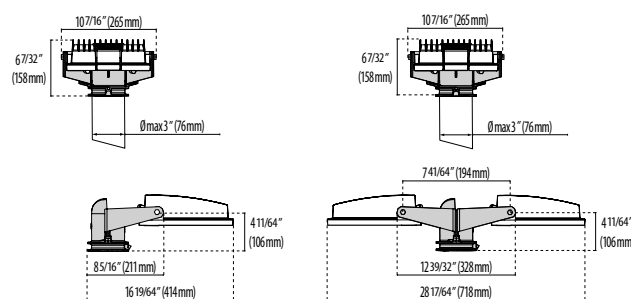
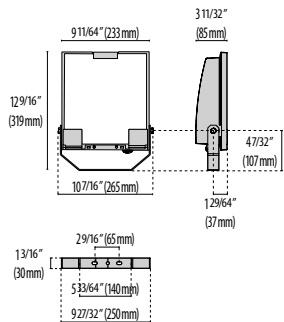
Die-cast painted aluminum housing.

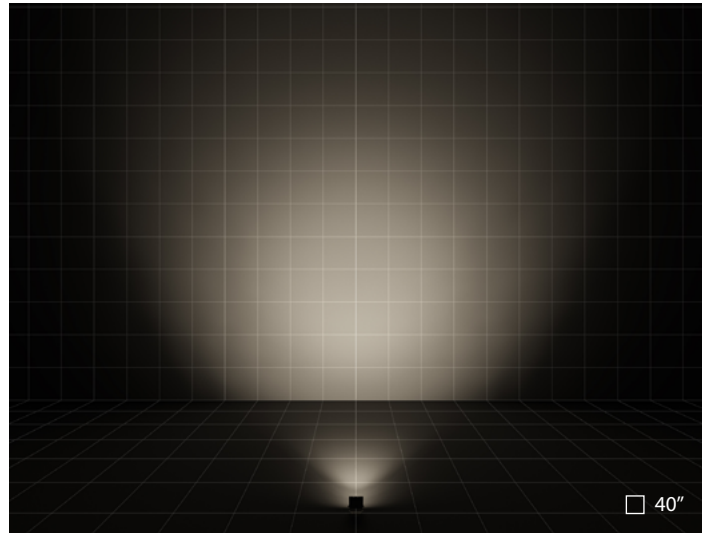
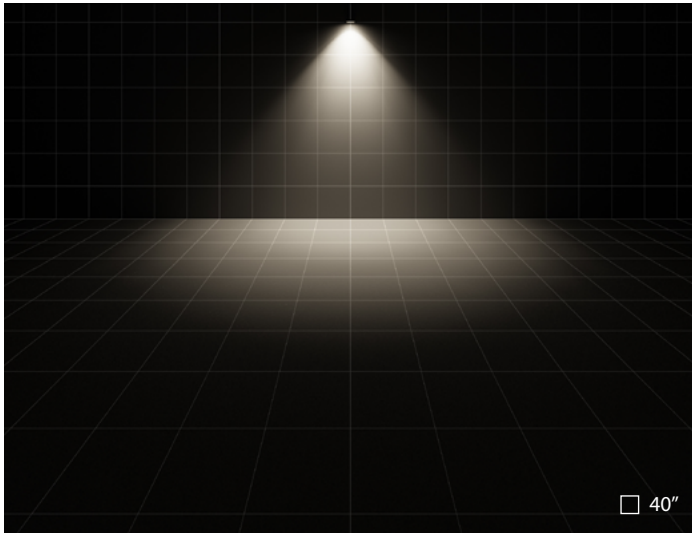


Pre-wired cable is factory sealed to housing with a cable gland allowing external electrical connections.

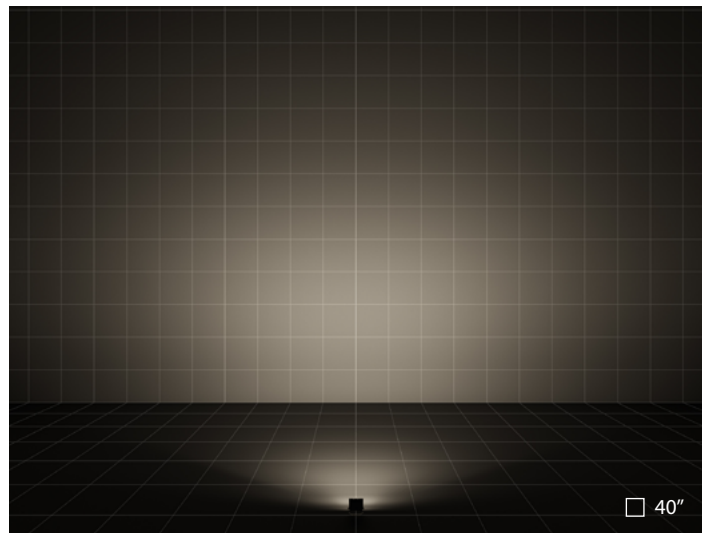
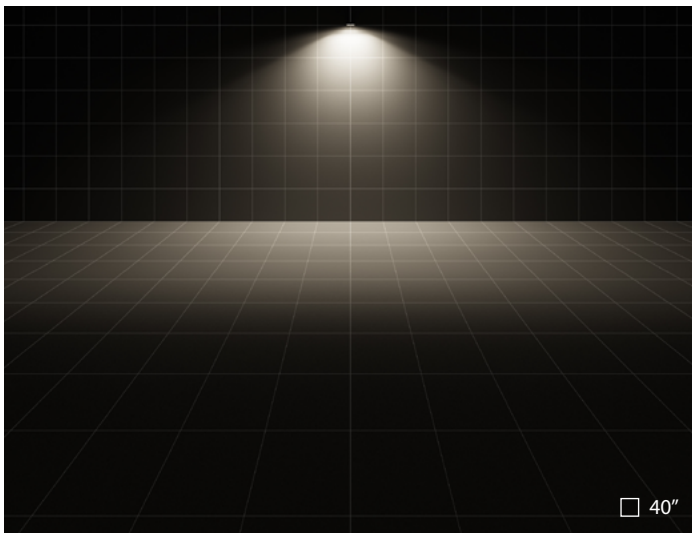


Louver, frosted glass, protective grid, wall support 19.69" / 39.37", single or double pole top support, and matching junction box plate cover accessories are available (to be ordered separately).

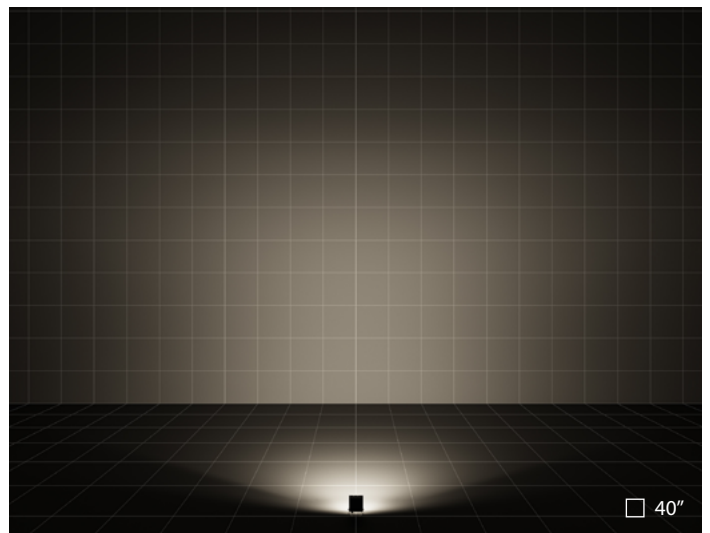
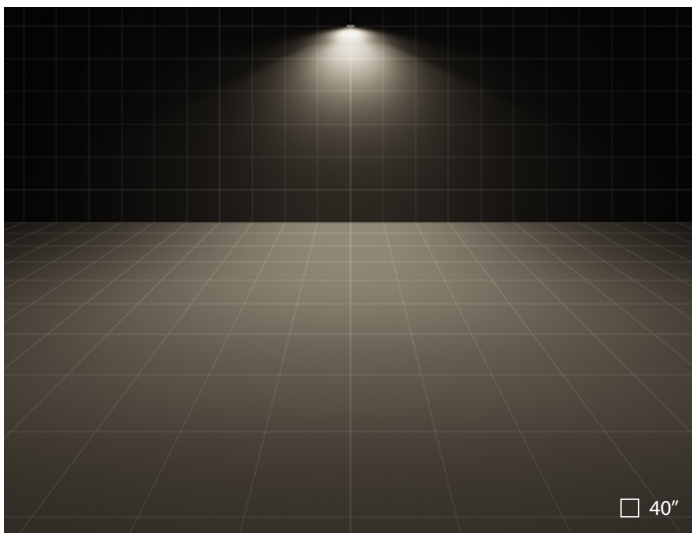




GUELL 1 | C/IW Circular Intensive-Wide optics | NEMA 5H x 5V



GUELL 1 | S/W Symmetric Wide optics | NEMA 7H x 5V



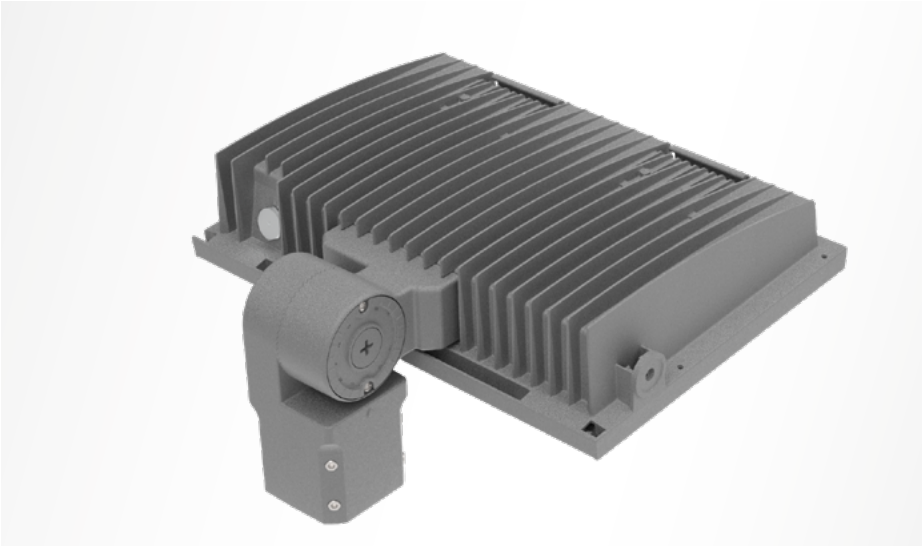
GUELL 1 | TYPE II | NEMA 6H x 5V





Louwman exclusive cars | Utrecht | Netherlands

GUELL 2



Standard slipfitter (GUELL 2 /3 SF versions) for a simplified installation.



The light distribution complies with the IESNA Full Cut-Off Classification and is eligible for all "Dark Sky" applications when aimed down.



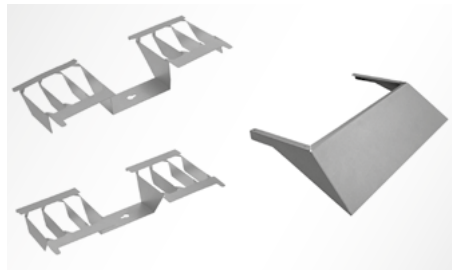
Die-cast painted aluminum housing.



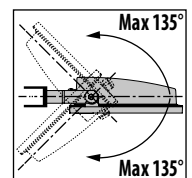
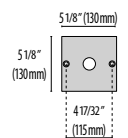
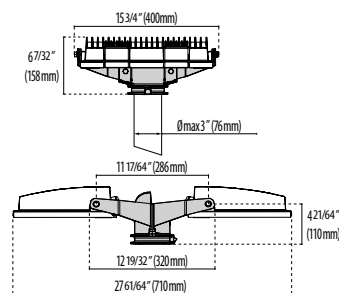
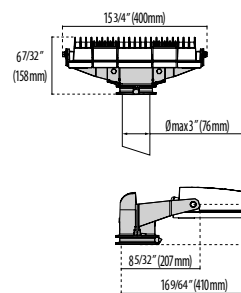
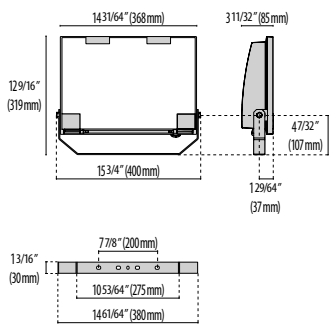
Standard flush-mounted quick release latch(es) for tool-free access.

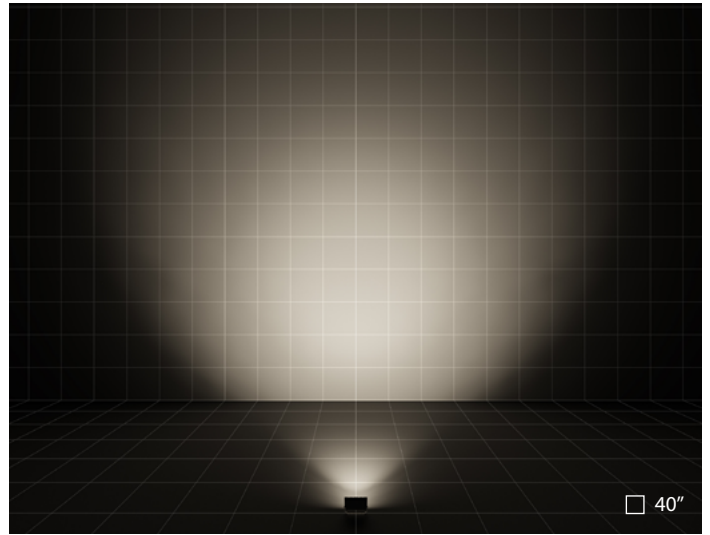
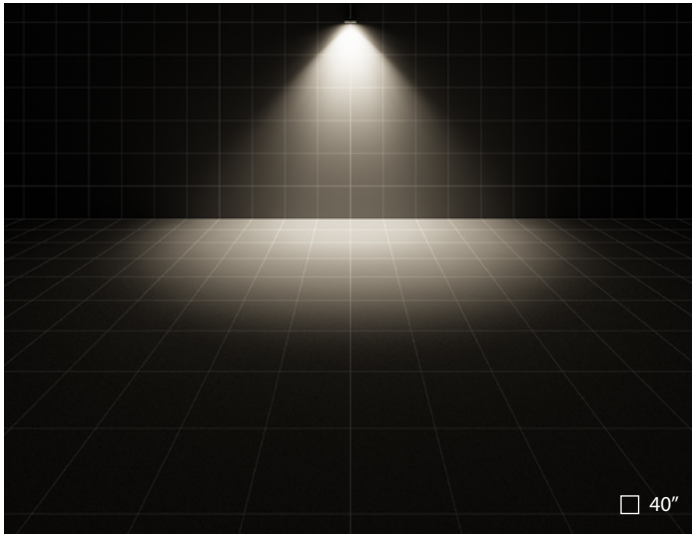


Pre-wired cable is factory sealed to housing with a cable gland allowing external electrical connections.

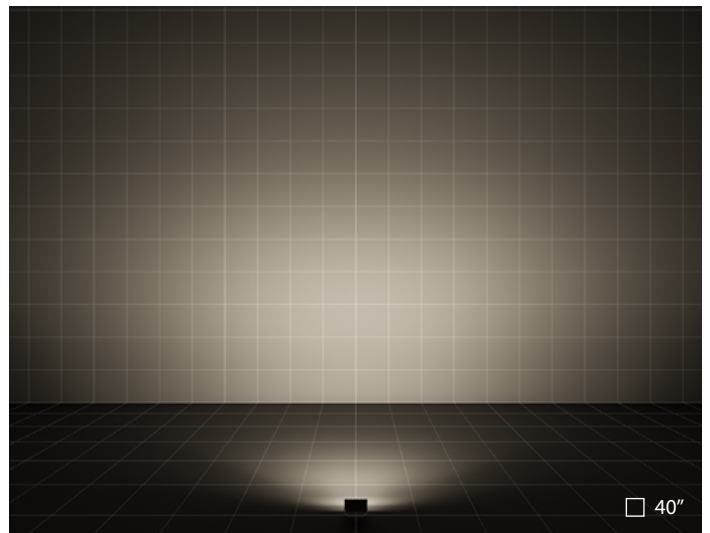
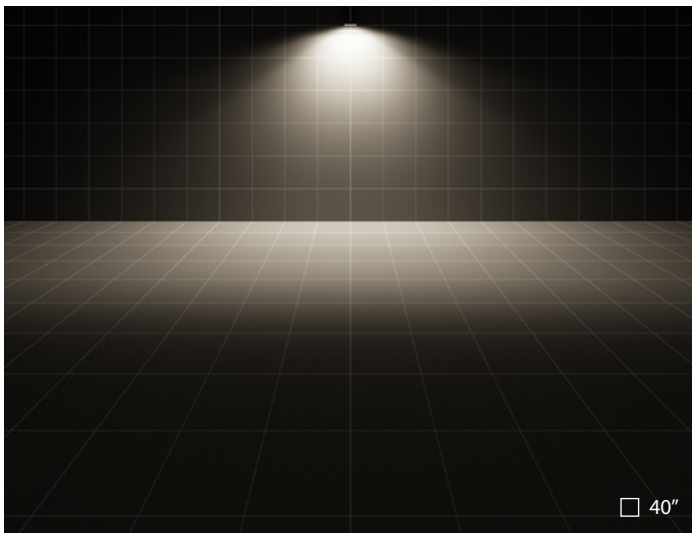


Louver, frosted glass, protective grid, wall support 19.69" / 39.37", single or double pole top support, and matching junction box plate cover accessories are available (to be ordered separately).

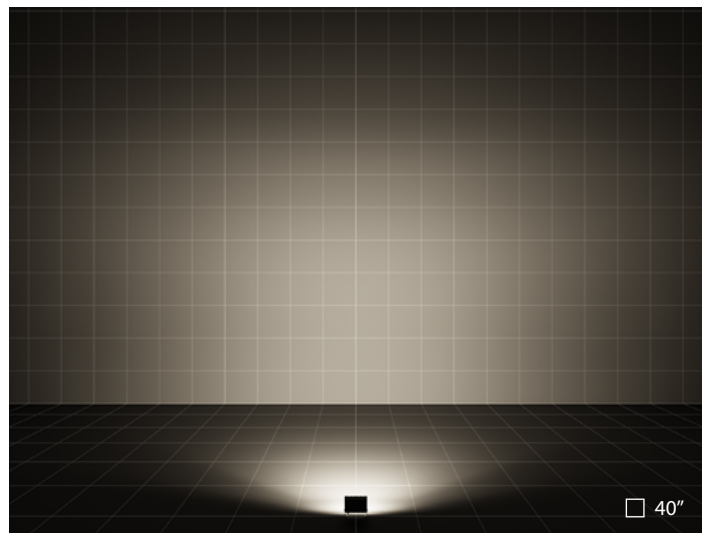
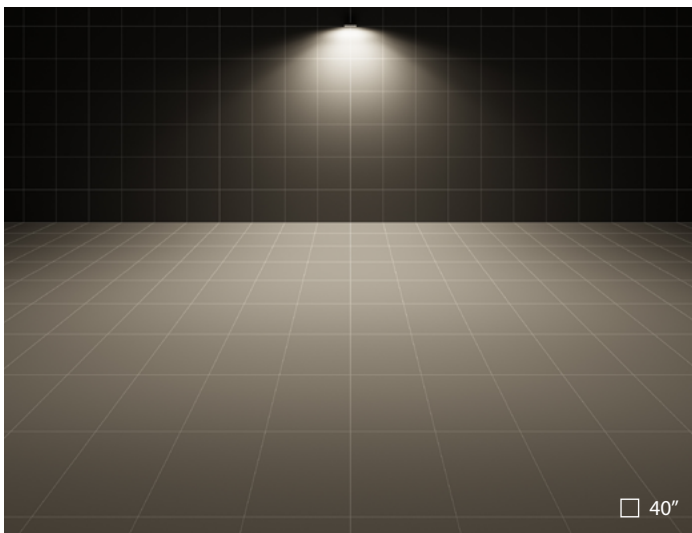




GUELL 2 | C/IW Circular Intensive-Wide optics | NEMA 5H x 5V

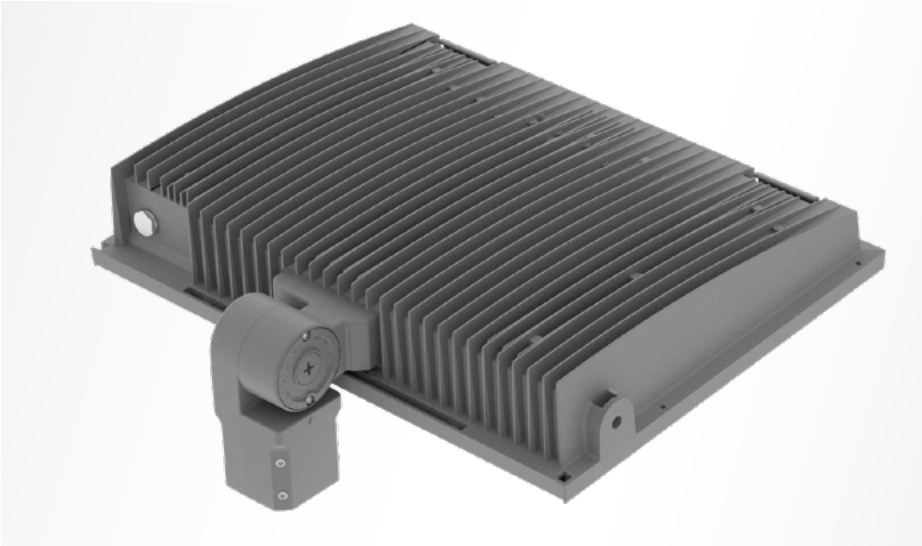


GUELL 2 | S/W Symmetric Wide optics | NEMA 7H x 5V



GUELL 2 | TYPE II | NEMA 7H x 5V

GUELL 3



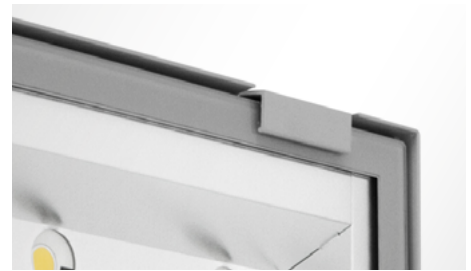
Standard slipfitter (GUELL 2 /3 SF versions) for a simplified installation.



The light distribution complies with the IESNA Full Cut-Off Classification and is eligible for all "Dark Sky" applications when aimed down.



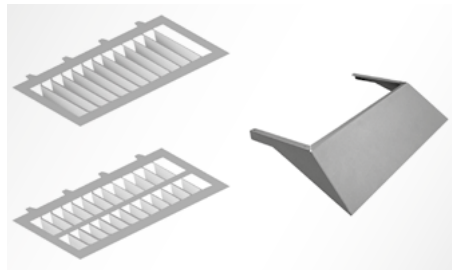
Die-cast painted aluminum housing.



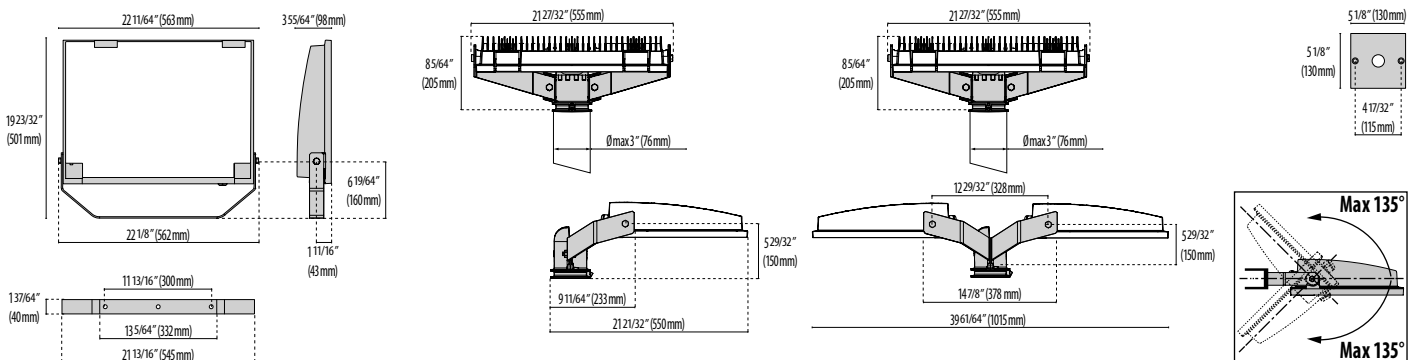
Standard flush-mounted quick release latch(es) for tool-free access.

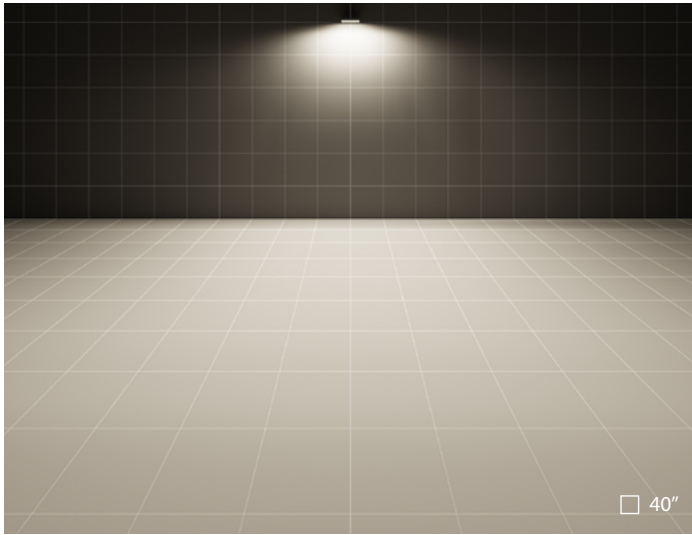


Pre-wired cable is factory sealed to housing with a cable gland allowing external electrical connections.

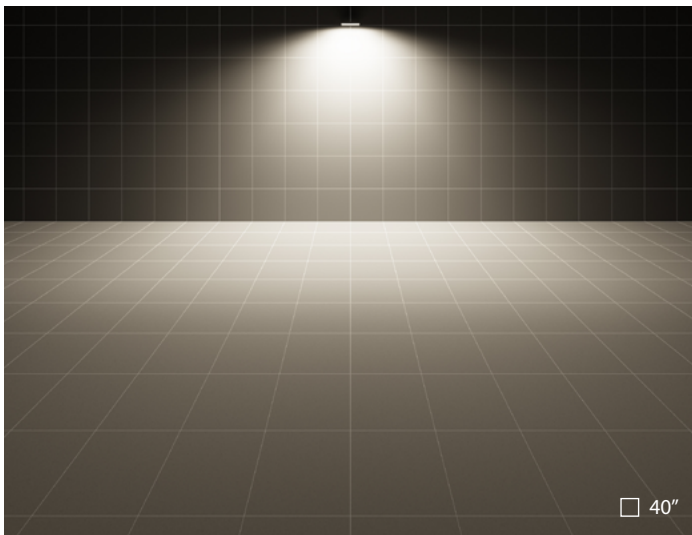
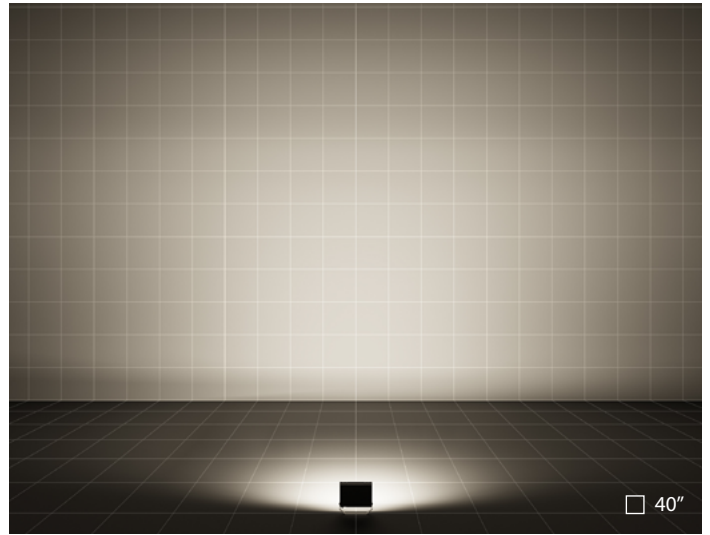


Louver, frosted glass, protective grid, wall support 19.69" / 39.37", single or double pole top support, and matching junction box plate cover accessories are available (to be ordered separately).

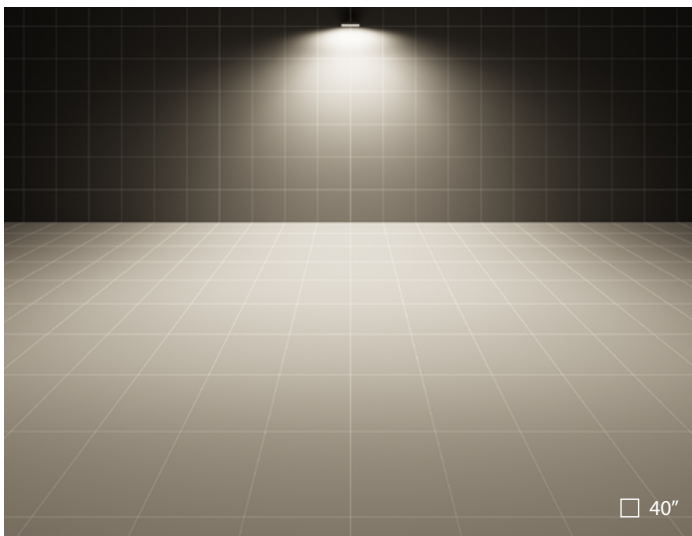
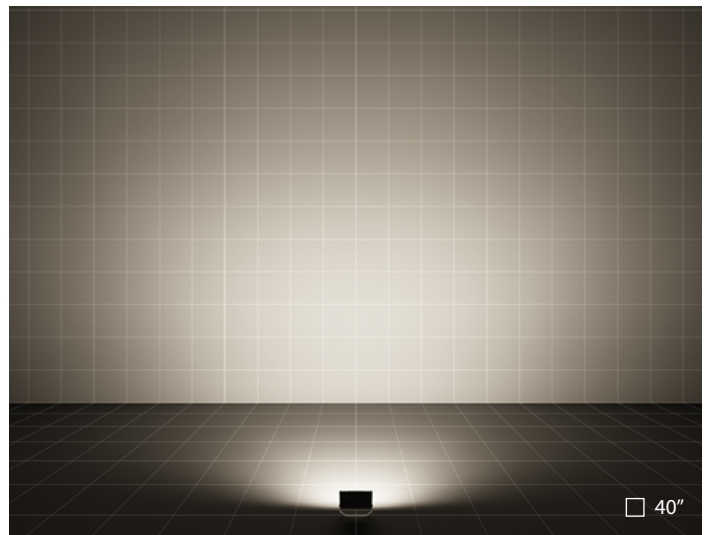




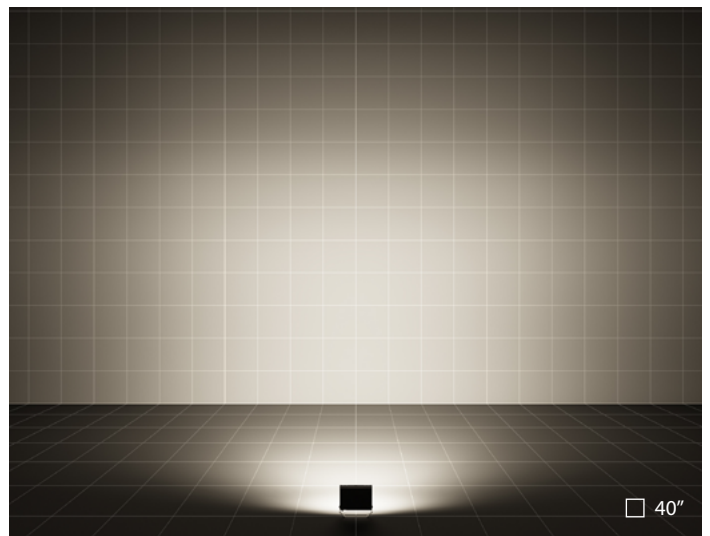
GUELL 3 | A50/W Asymmetric Wide optics | TYPE III | NEMA 7H x 5V



GUELL 3 | S/W Symmetric Wide optics | NEMA 7H x 6V



GUELL 3 | TYPE II | NEMA 6H x 5V

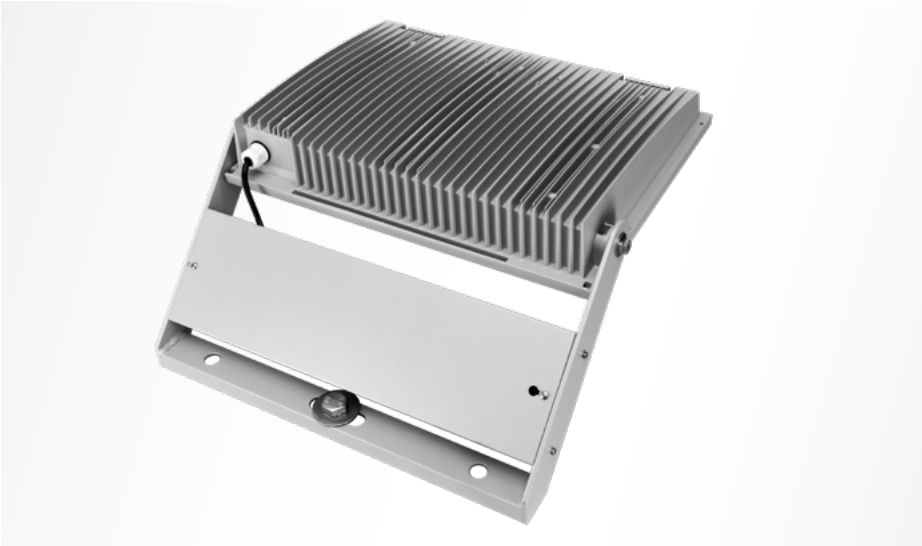






De Westfries | Hoorn | Netherlands

GUELL 4



Die-cast painted aluminum housing.



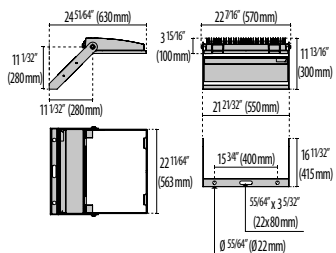
The light distribution complies with the IESNA Full Cut-Off Classification and is eligible for all "Dark Sky" applications when aimed down.

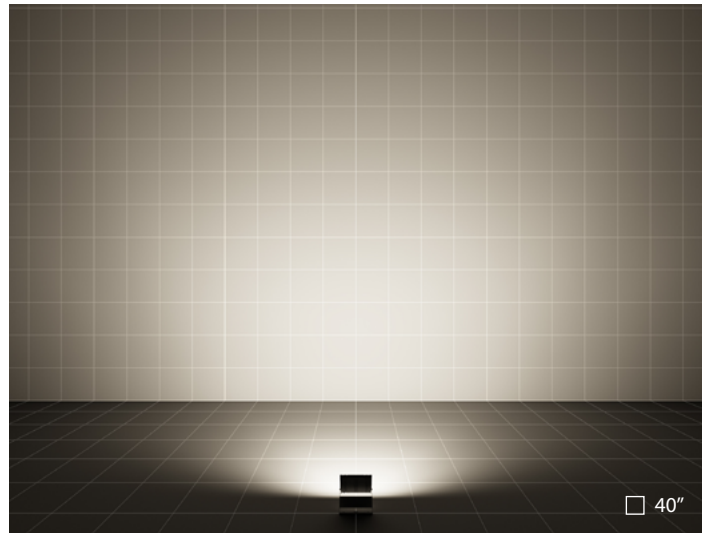
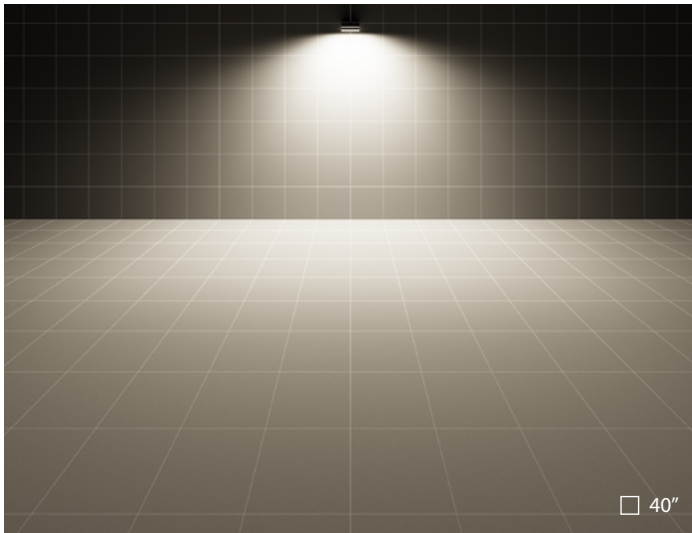


Standard flush-mounted quick release latch(es) for tool-free access.

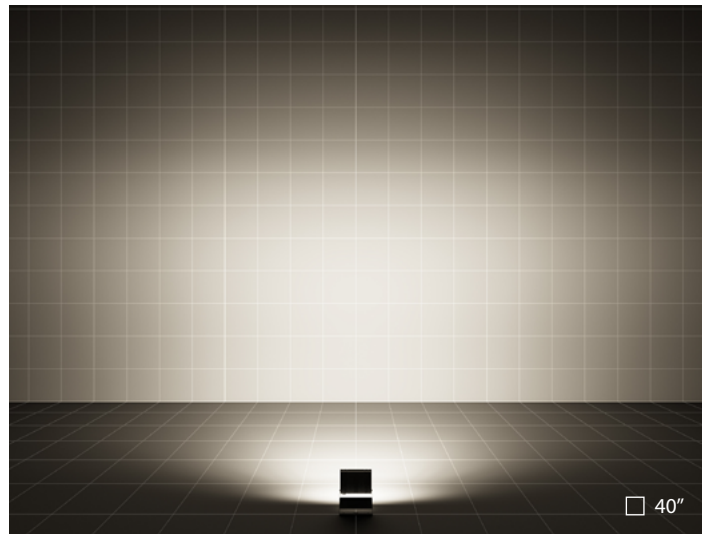
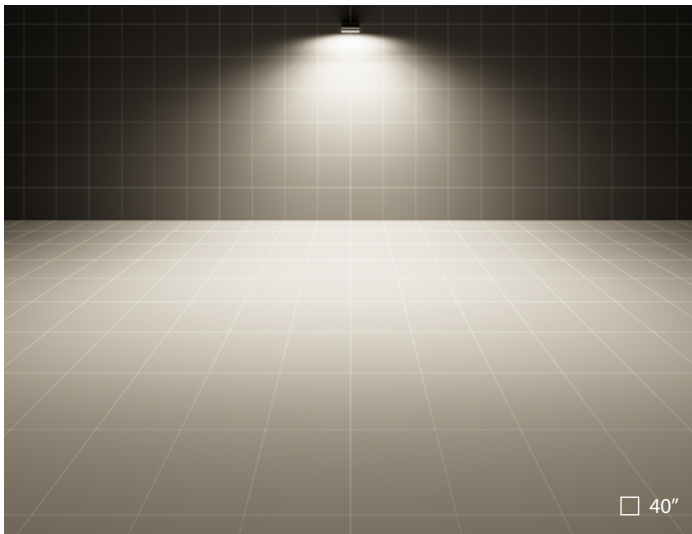


Pre-wired cable is factory sealed to housing with a cable gland allowing external electrical connections.





GUELL 4 | S/W Symmetric Wide optics | NEMA 7H x 7V



GUELL 4 | TYPE II | NEMA 7H x 5V

PERFORMANCE
IN LIGHTING

powered by
GEWISS

PERFORMANCE IN LIGHTING
2621 Keys Pointe
Conyers, GA 30013 - United States
Ph 770.822.2115
Fax 770.822.9925

www.performanceinlighting.com