



MAGICCLICK | WALL MOUNTED | CEILING MOUNTED

PRODUCT CODE

PROJECT

TYPE

PERFORMANCE
in LIGHTING

powered by
GEWISS



Company

Performance in Lighting USA, located in Conyers, GA, is part of an international group of companies headquartered in Verona, Italy.

The group was formed from a number of well-established technical lighting companies from various countries. Performance in Lighting has a wide sales and distribution network operating in over 100 countries worldwide. Production facilities are located in Verona Italy, Bergamo Italy, Goslar Germany, Brussels Belgium, Conyers GA USA. Sales/distribution subsidiaries are located in England, Holland, France, Finland, Spain, Portugal, Australia, Dubai and Japan.

Recognized for its unique professional approach and technical know-how, Performance in Lighting has combined its international experience and technical expertise to become a worldwide leader in its industry. The group offers various lighting solutions worldwide for many applications including interior, exterior, residential, commercial, and sports lighting providing options to satisfy both architectural and engineering requirements.

Performance in Lighting USA concentrates on specification grade luminaires designed to provide a vast array of lighting solutions. Our concentration is outdoor products for illuminating commercial spaces from structural facades to parking areas. We strive to meet the demands of today's lighting community offering made in USA products, European designed with clean, contemporary aesthetics along with aggressive price points and fast lead times.

Pronto Program

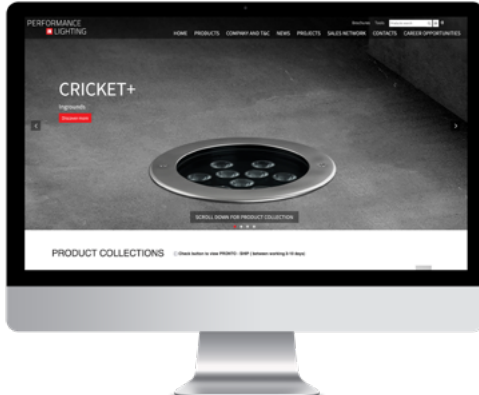
PERFORMANCE IN LIGHTING offers a wide range of quick ship fixtures through the Pronto Program and a host of options to fit within the unique budget of your next project.





Overview

Click the QR-code for latest information.



Website

Please visit our web site www.performanceinlighting.com/us/us/ for the latest updated versions available.



5-year warranty

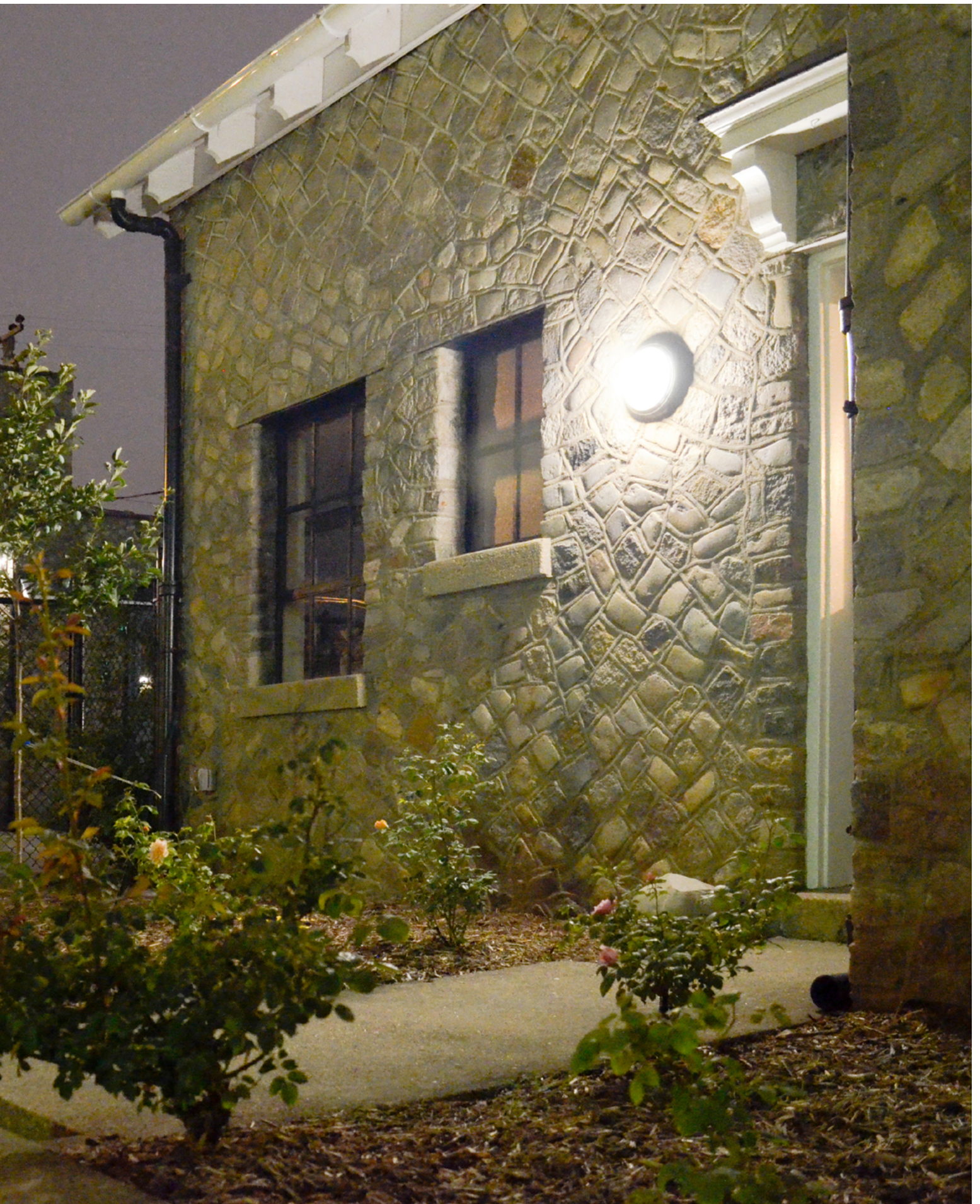
All products are covered by a 5-year warranty, provided that they are used and maintained according to instructions. Focus on quality, safety and product lifetime/longevity are the essential objectives of PERFORMANCE IN LIGHTING. For additional information, email info.usa@pil.lighting

MAGICCLICK

Installs are a cinch

A series of luminaires suitable for indoors and outdoors, ceiling or wall mounted, available in two shapes. The MAGICCLICK 25 LED is the most used of all the MAGICCLICK series of surface mount fixtures and is now available in a higher output for an incredible price and value. With lumen levels to suit your project specifications in a sleek die-cast body with pressed glass lens, the MAGICCLICK provides inherent glare control, consistent lighting uniformity and a beautiful architectural design. Installation options include a standard J-Box mounting as well as the ability to accommodate side conduit entry make the install of the MAGICCLICK quick and easy. The low total cost of ownership means that the MAGICCLICK is the preferred choice of owners, contractors and maintenance personnel alike. The MAGICCLICK 25 also offers integral emergency and dimming standard. With LED MAGICCLICK fixtures ranging from three diameters, the MAGICCLICK collection is another premiere option for your surface mount fixture needs.





Blue bee cider | Richmond | Virginia | USA

MAGICCLICK

Ceiling- and wall- mount series. Fixtures consist of:

CONSTRUCTION

- Multi-step powder-coat painting process, optimized against UV rays and corrosion.
- Copper-free die-cast aluminum housing, ring, and faceplates.
- Custom MCPCB utilized to maximize heat dissipation and promote long LED life.
- High transmittance, internally coated, pressed glass diffuser, thermally, and chemically quenched to strengthen the impact resistance and reduce the effect of rapid temperature changes.
- The ring/faceplate is integral with the diffuser.
- Custom molded, anti-aging gasket(s).
- Stainless steel external hardware.

INSTALLATION

- Available in three standard sizes of Ø10.4" x D4.6" (MAGICCLICK ROUND 20), Ø12.2" x D4.4" (MAGICCLICK ROUND 25) and Ø20.2" x D3.3" (MAGICCLICK MAXI). MAGICCLICK OVAL overall standard size is H11" x L8.3" x D4.6" with ring or Shade H, Shade V faceplate.
- Standard hinge-style housing allows for a simplified installation.
- Tilttable LED board mounting bracket allows for quick and easy installation (ROUND 25 / MAXI).

OPTICS

- 100% uniform diffused light emission.

ELECTRICAL

- Input voltage: 120-277 V (50 / 60 Hz), integral driver.
- Optional, integral, emergency battery-pack designed for a minimum operation of 90 minutes (EMPK versions).

OPTIONS

- The luminaire may be configured with numerous options and multiple standard finishes. Not all options are available in all configurations. Consult factory for more information about specification sheet details.

LISTINGS

- UL Wet location listed. IP55 rated.
- UL Wet location listed. IP65 rated (MAGICCLICK MAXI).
- Product meets Buy American requirements within ARRA.
- ADA compliant (MAGICCLICK MAXI).
- Consult factory for which version qualifies for the PRONTO-SHIP program. All Rough-Ins are available to ship within 48-72 hrs. Orders must be marked "PRONTO."
- Photometric data measured according to UNI EN 13032-1/4 and IES LM-79-08
- Actual performance may differ as a result of the end-user environment and application. All values are design or typical values, measured under laboratory conditions at 25 °C. Specifications are subject to change without notice.

WARRANTY

- 10-year glass warranty.
- 5-year limited warranty. Complete warranty terms located at www.performanceinlighting.com



MAGICCLICK MAXI



MAGICCLICK OVAL



MAGICCLICK ROUND

MAGICLICK OVAL / ROUND



High transmittance, internally coated, soda-lime pressed glass diffuser, thermally and chemically quenched to strengthen the impact resistance and reduce the affect of rapid temperature changes.



MAGICLICK OVAL overall standard size is H11" x L8.3" with trim faceplate.



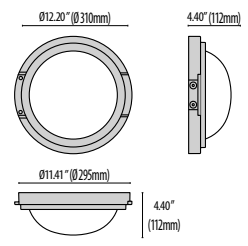
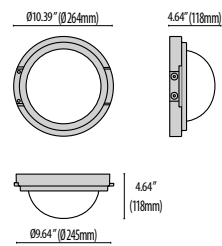
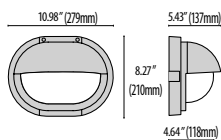
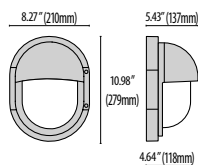
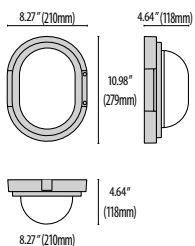
MAGICLICK OVAL overall standard size is L8.3" x L11" with Shade H faceplate.



MAGICLICK OVAL overall standard size is H11" x L8.3" with Shade V faceplate.

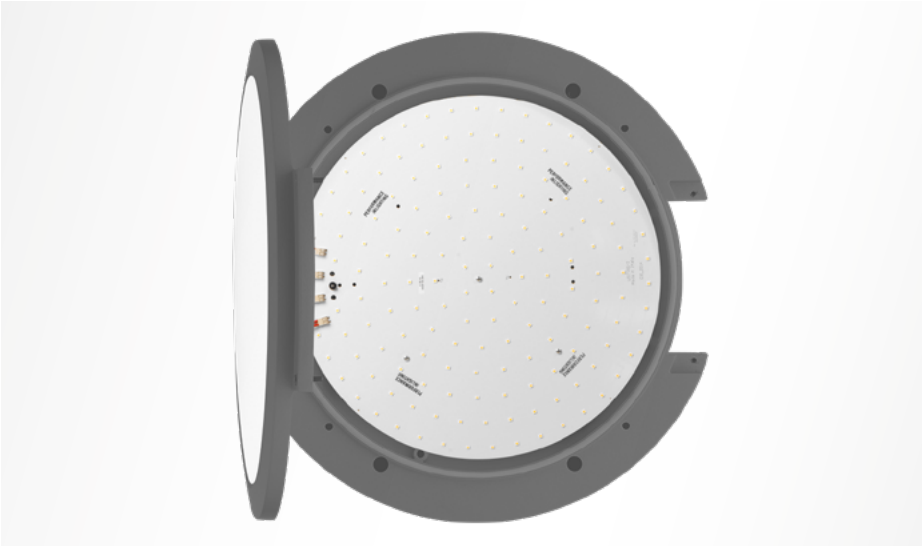


100% uniform diffused light emission.





MAGICCLICK MAXI



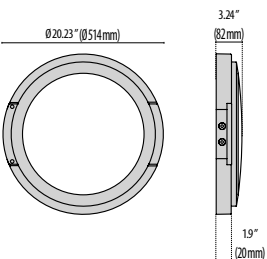
Tilttable LED board mounting bracket allows for quick and easy installation.



100% uniform diffused light emission.



High transmittance, internally coated, soda-lime pressed glass diffuser, thermally and chemically quenched to strengthen the impact resistance and reduce the affect of rapid temperature changes.





PERFORMANCE
IN LIGHTING

powered by
GEWISS

PERFORMANCE IN LIGHTING
2621 Keys Pointe
Conyers, GA 30013 - United States
Ph 770.822.2115
Fax 770.822.9925

www.performanceinlighting.com