



MASK+ | WALL MOUNTED

PRODUCT CODE

PROJECT

TYPE

PERFORMANCE
iN LIGHTING

powered by
GEWISS



Company

Performance in Lighting USA, located in Conyers, GA, is part of an international group of companies headquartered in Verona, Italy.

The group was formed from a number of well-established technical lighting companies from various countries. Performance in Lighting has a wide sales and distribution network operating in over 100 countries worldwide. Production facilities are located in Verona Italy, Bergamo Italy, Goslar Germany, Brussels Belgium, Conyers GA USA. Sales/distribution subsidiaries are located in England, Holland, France, Finland, Spain, Portugal, Australia, Dubai and Japan.

Recognized for its unique professional approach and technical know-how, Performance in Lighting has combined its international experience and technical expertise to become a worldwide leader in its industry. The group offers various lighting solutions worldwide for many applications including interior, exterior, residential, commercial, and sports lighting providing options to satisfy both architectural and engineering requirements.

Performance in Lighting USA concentrates on specification grade luminaires designed to provide a vast array of lighting solutions. Our concentration is outdoor products for illuminating commercial spaces from structural facades to parking areas. We strive to meet the demands of today's lighting community offering made in USA products, European designed with clean, contemporary aesthetics along with aggressive price points and fast lead times.

Pronto Program

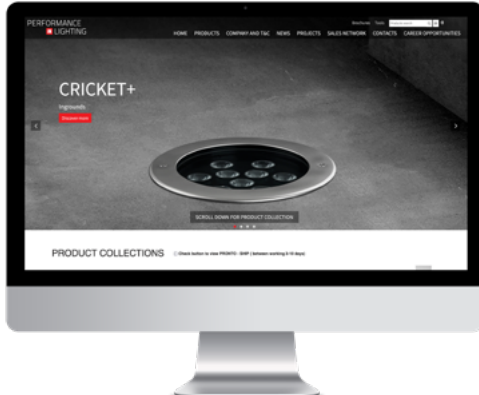
PERFORMANCE IN LIGHTING offers a wide range of quick ship fixtures through the Pronto Program and a host of options to fit within the unique budget of your next project.





Overview

Click the QR-code for latest information.



Website

Please visit our web site www.performanceinlighting.com/us/us/ for the latest updated versions available.



5-year warranty

All products are covered by a 5-year warranty, provided that they are used and maintained according to instructions. Focus on quality, safety and product lifetime/longevity are the essential objectives of PERFORMANCE IN LIGHTING. For additional information, email info.usa@pil.lighting

MASK+

Dynamic balance between light and void

Artificial light plays an essential role in the environment during night time: it provides orientation, transmits mood and emotions and draws attention.

Restyling of the successful series, MASK+ is an elegant dynamic balance between full and empty, where the void is presented as an object that identifies and distinguishes the shape by characterizing it. The light embraces this emptiness filling it, signifying the context both inside and outside, both day and night. This unique design will add elegance to any contemporary space. Install it outdoors to grab attention and bring it indoors as a conversation piece.





MASK+

Wall sconce series. Fixtures consist of:

CONSTRUCTION

- Copper-free precision die-cast aluminum housing and mounting plate.
- Multi-step powder-coat painting process, optimized against UV rays and corrosion.
- Frosted, tempered, silk-screened, flat glass diffuser.
- Custom molded, anti-aging gasket(s).
- Stainless steel external hardware.
- Custom MCPCB utilized to maximize heat dissipation and promote long LED life.

INSTALLATION

- Overall standard size of H2.5" x L12.8" x D6.8".
- Rectangular mounting plate included (for use RACO 8660 or equivalent); 4" tall accessory plate for use with larger junction box applications available (order separately).

OPTICS

- Single (M) or dual (B) light emission.
- Type V light distribution.

ELECTRICAL

- Input voltage: 120-277 V (50 / 60 Hz), integral 0-10 V dimming driver.

OPTIONS

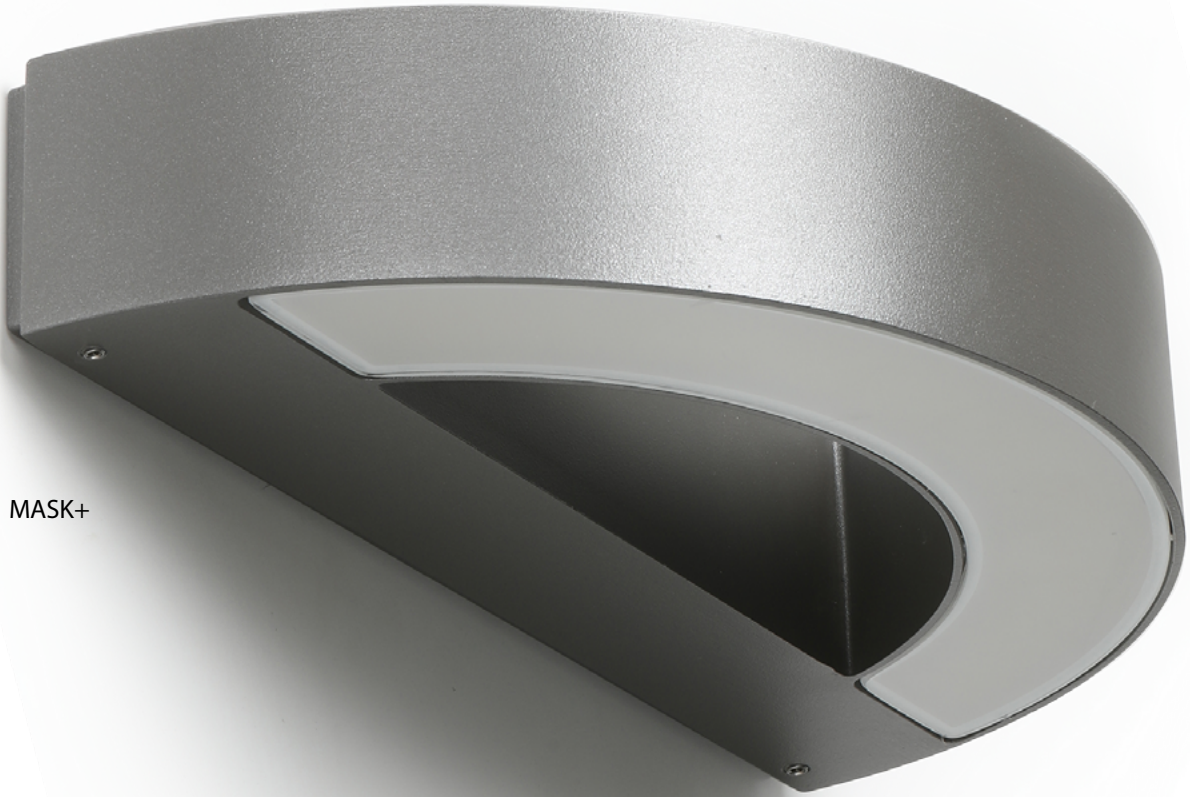
- The luminaire may be configured with numerous options and multiple standard finishes. Not all options are available in all configurations. Consult factory for more information about specification sheet details.

LISTINGS

- UL Wet location listed. IP65 rated.
- Product meets Buy American requirements within ARRA.
- Consult factory for which version qualifies for the PRONTO-SHIP program. All Rough-Ins are available to ship within 48-72 hrs. Orders must be marked "PRONTO."
- Photometric data measured according to UNI EN 13032-1/4 and IES LM-79-08
- Actual performance may differ as a result of the end-user environment and application. All values are design or typical values, measured under laboratory conditions at 25 °C. Specifications are subject to change without notice.

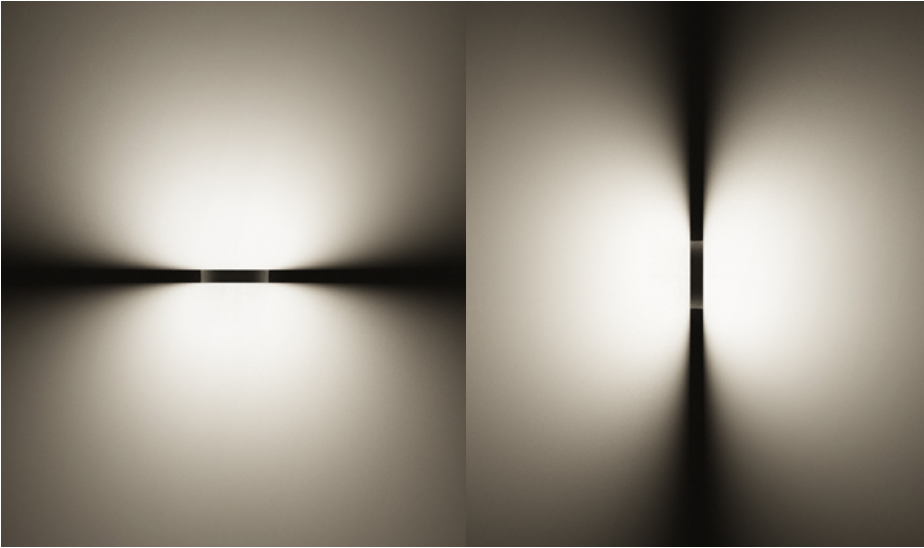
WARRANTY

- 5-year limited warranty. Complete warranty terms located at www.performanceinlighting.com

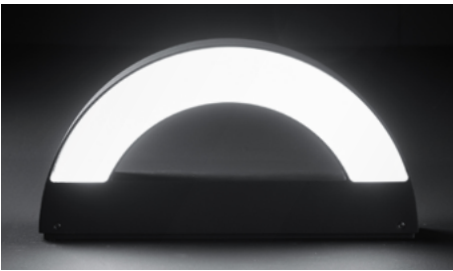


MASK+

MASK+



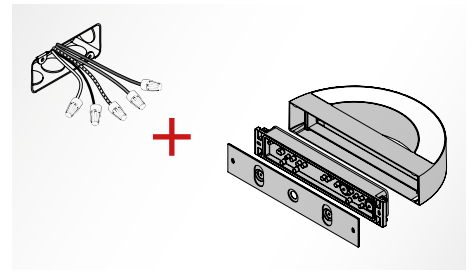
Double installation position is possible to obtain different lighting effects.



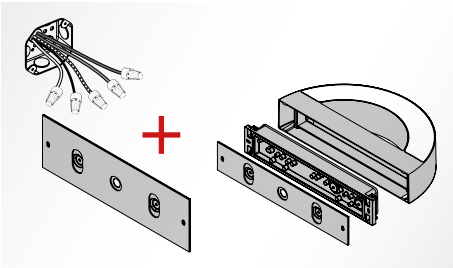
Frosted, flat, tempered silk screened soda-lime glass diffuser.



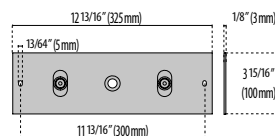
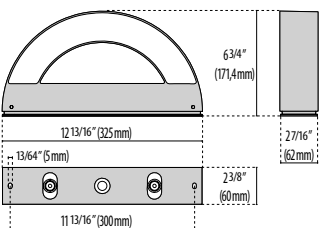
No visible screws.

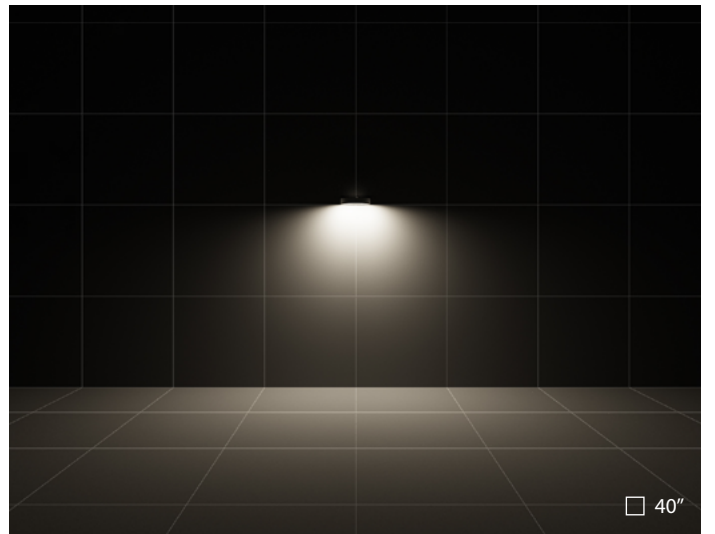
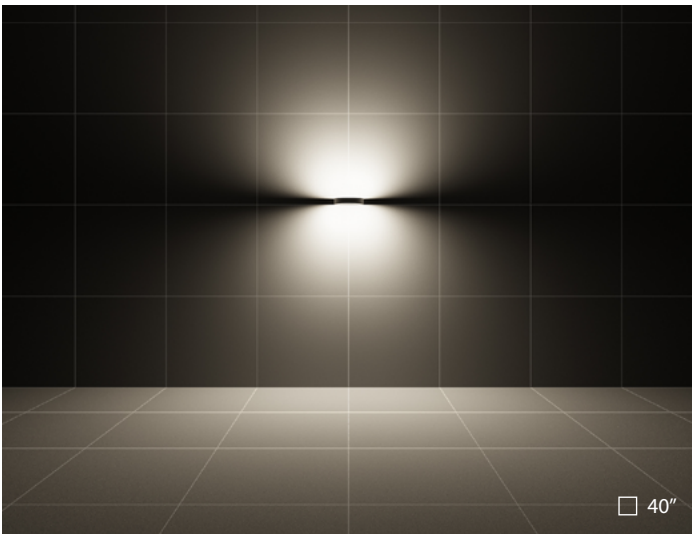


Rectangular mounting plate included (for use with RACO 8660 or equivalent).



4" tall accessory plate for use with larger junction box applications available (ordered separately).





MASK+ B | S/EW Symmetric Extra-Wide optics

MASK+ M | S/EW Symmetric Extra-Wide optics

PERFORMANCE
IN LIGHTING

powered by
GEWISS

PERFORMANCE IN LIGHTING
2621 Keys Pointe
Conyers, GA 30013 - United States
Ph 770.822.2115
Fax 770.822.9925

www.performanceinlighting.com